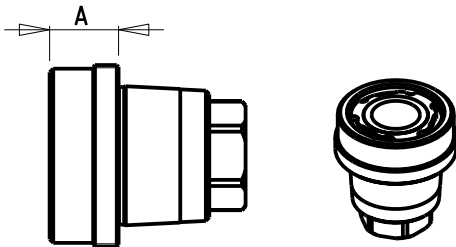
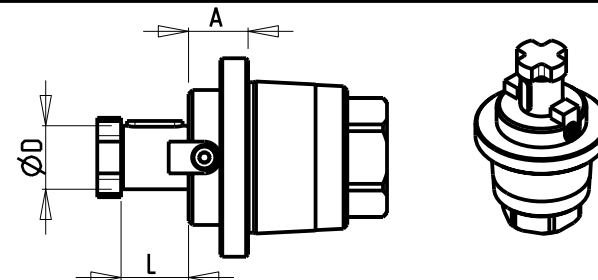


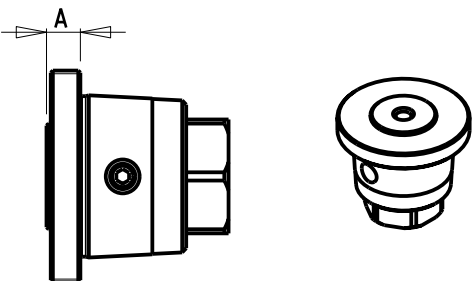
Cod. MT	Mandrino Spindle Spindel	A
MTSK63A01	ER50	53.9
MTSK63A02	ER40	39.6
MTSK63A03	ER32	36.6
MTSK63A04	ER25	33.6



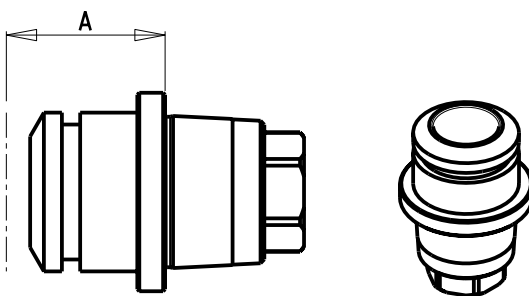
Cod. MT	Mandrino Spindle Spindel	A
MTSK63B01	ERA40	20
MTSK63B02	ERA32	18
MTSK63B03	ERA25	10



Cod. MT	Mandrino Spindle Spindel	Misure Dimensions Masse	A	D	L	
MTSK63C02	Ø16x17	mm	16	16	17	*
MTSK63C03	Ø3/4"x3/4"	Inch	16.5	3/4"	3/4"	*
MTSK63C04	Ø22x19	mm	18	22	19	*
MTSK63C05	Ø1"x3/4"	Inch	20	1"	3/4"	*
MTSK63C06	Ø27x21	mm	20	27	21	*
MTSK63C07	Ø27x21	mm	40	27	21	*

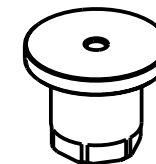


Cod. MT	Mandrino Spindle Spindel	A
MTSK63D01	WELDON 6	9
MTSK63D02	WELDON 8	9
MTSK63D03	WELDON 10	9
MTSK63D04	WELDON 12	10
MTSK63D05	WELDON 16	12
MTSK63D06	WELDON 20	14
MTSK63D08	WELDON 25	14
MTSK63D17	WELDON 1"	14



Cod. MT	Mandrino Spindle Spindel	A
MTSK63E01	POW RGRIP® PG32	53

Cod. MT	
MTSK63T00	Tappo di protezione
	Cover Plug
	Abdeckstopfen



* Solo con lubrificazione esterna / only with external coolant / Nur mit Aussenkuehlung

TABELLE

TABELLE PORTAUTENSILI MODULARI MTSK-63
 MTSK-63 quick change toolholders clampings chart
 MTSK-63 modulare Werkzeugaufnahmen tabelle

Subject to change without notice.

M.T. srl

Via Casino Albini 480
 Tel. 0541/956034-957884
 Fax 0541/956341
 47842 S. GIOVANNI IN M. (RN)
 e-mail: mtma@mtmarchetti.com
 http://www.mtmarchetti.com



TBL300-1-63