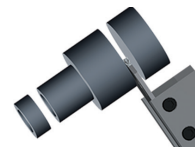
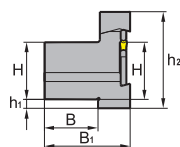
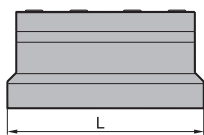
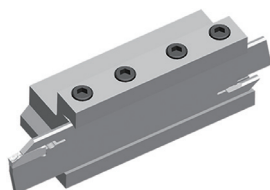


Clamping block (external)

QZS*



Article	*	Stock	Dimensions [mm]						Inserts
			H	L	h ₁	h ₂	B	B ₁	
QZS2026		●	20	86	10	46.6	19	38	QE**26
QZS2526		●	25	86	5	46.6	23	42	QE**26
QZS3226		○	32	86	3	51.6	30	48	QE**26
QZS2032		●	20	110	13	50	19	38	QE**32
QZS2532		●	25	110	8	50	23	42	QE**32
QZS3232		●	32	110	5	54	30	48	QE**32

● Ex stock ○ On demand

* With internal cooling

Spare parts			
	Insert	QE**26	QE**32
	H	20-32	20-32
	Clamp	QZC26	QZC32
	Screw	GB70-85-M6×20 (7.0 Nm)	GB70-85-M6×20 (7.0 Nm)
	Wrench	W50RL	W50RL

A

Turning

B

Milling

C

Drilling

D

Technical
Information

E

Index

Blade

Q E G D 32 N (-1)

1 2 3 4 5 6 7

Blade for parting & grooving

1

Application	
Code	Description
E	External machining

2

Insert seat size [mm]	
Holder/cutting width	
Code	Description
B	2,0
E	2,5
F	3,0
G	4,0
H	5,0
K	6,0
L	8,0

3

No. of cutting edges	
Code	Description
S	Single
D	Double

4

Blade height [mm]

5

Type	
Code	Description
R	Right
L	Left
N	Right and left

6

Blade height –1 mm

7

Clamping block

QZ S 32 32

1 2 3 4

Parting & grooving tool

1

No. of cutting edges	
Code	Description
S	Single
D	Double

2

Clamping surface height [mm]

3

Blade height [mm]

4