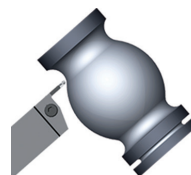
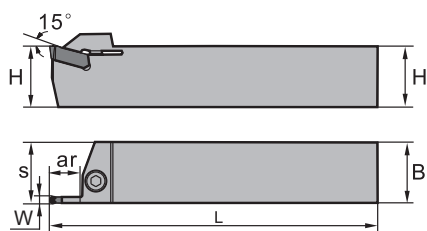
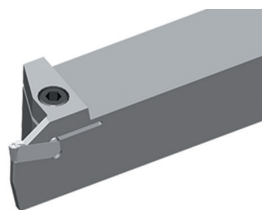



Parting & grooving tool holder (external)

QE*SR/L





Right hand style

Article	*	Stock		Dimensions [mm]					Inserts
		R	L	HxB	L	S	W	ar _{max}	
QEFS2525R/L12-3N		○	○	25x25	150	25.3	3	12	ZI**
QEGS2525R/L12-4N		○	○	25x25	150	25.3	4	12	ZI**
QEHS2525R/L12-5N		○	○	25x25	150	25.4	5	12	ZI**
QEKS2525R/L12-6N		○	○	25x25	150	25.4	6	12	ZI**
QEFS3232R/L22-3N		○	○	32x32	170	32.3	3	22	ZI**
QEGS3232R/L22-4N		○	○	32x32	170	32.3	4	22	ZI**
QEHS3232R/L22-5N		○	○	32x32	170	32.4	5	22	ZI**
QEKS3232R/L22-6N		○		32x32	170	32.4	6	22	ZI**



● Ex stock ○ On demand

* With internal cooling

Spare parts

	Insert	ZI**
	H	25-32
	Screw	GB70-85-M6x20 (7.0 Nm)
	Wrench	WH50L

Insert

	
A412	A413

System code > A422

Grade selection > A394

Technical info > A501

Cutting data > A456

External tool holders

Q F G D 2525 R 22 (S) C – (130) (H)

1 2 3 4 5 6 7 8 9 10 11

Holder for parting & grooving	Application		Insert seat size [mm]	
	Code	Description	Holder/cutting width	
	E	External machining	Code	Description
	F	Axial machining	A	1,5
			B	2,0
			E	2,5
			F	3,0
			G	4,0
			H	5,0
			K	6,0
			L	8,0
1	2		3	

No. of cutting edges		Cross section of holder [mm] x [mm]	Type	
Code	Description		Code	Description
S	Single		R	Right
D	Double		L	Left
			N	Right and left
4		5	6	

Max. cutting depth [mm]	Serie	
	Code	Description
	S	Swiss turning holder
	DG	Cut-off holder for greater grooving depths with reinforcement
	DGS	Cut-off holder for greater grooving depths without reinforcement
7	8	

With internal cooling	Min. diameter of work piece for first axial grooving [mm]	Cutting head	
		Code	Description
		H	0°
		L	90°
9	10	11	

A

Turning

B

Milling

C

Drilling

D

Technical Information

E

Index