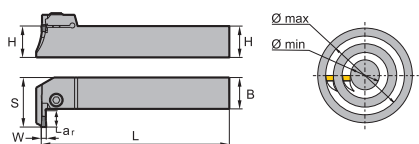
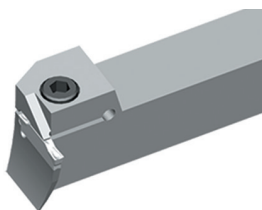



Parting & grooving tool holder (axial)

QFHSDR/L





Right hand style

Article	*	Stock		Dimensions [mm]						Inserts
		R	L	HxB	L	S	W	ar _{max}	ØD (min-max)	
QFHS2525R/L30-185L		○	○	25x25	150	56.5	5	30	185-400	Z*HS**

● Ex stock ○ On demand

* With internal cooling

Spare parts

	Insert	Z*HS**
	H	25
	Screw	GB70-85-M6x20 (7.0 Nm)
	Wrench	W50RL

Insert

		
A402	A405	A406

System code > A422

Grade selection > A394

Technical info > A501

Cutting data > A456

External tool holders

Q F G D 2525 R 22 (S) C – (130) (H)

1 2 3 4 5 6 7 8 9 10 11

A

Turning

Holder for parting & grooving

1

Application	
Code	Description
E	External machining
F	Axial machining

2

Insert seat size [mm]	
Holder/cutting width	
Code	Description
A	1,5
B	2,0
E	2,5
F	3,0
G	4,0
H	5,0
K	6,0
L	8,0

3

B

Milling

C

Drilling

No. of cutting edges	
Code	Description
S	Single
D	Double

4

Cross section of holder [mm] x [mm]

5

Type	
Code	Description
R	Right
L	Left
N	Right and left

6

D

Technical Information

Max. cutting depth [mm]

7

Serie	
Code	Description
S	Swiss turning holder
DG	Cut-off holder for greater grooving depths with reinforcement
DGS	Cut-off holder for greater grooving depths without reinforcement

8

With internal cooling

9

Min. diameter of work piece for first axial grooving [mm]

10

Cutting head	
Code	Description
H	0°
L	90°

11

E

Index