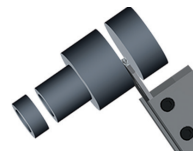
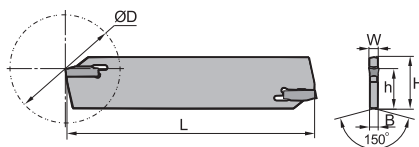
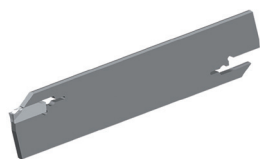


A

Parting blade for external machining

QE*S**N-1



Turning

B

Article	*	Stock	Dimensions [mm]						Inserts
			H	L	h	B	W	ØDmax	
QEES26N-1	●		26	110	19	2	2.5	60	ZPES**
QEES32N-1	●		32	150	24.6	2	2.5	100	ZPES**
QEFS26N-1	●		26	110	19	2.4	3	60	ZPFS**
QEFS32N-1	●		32	150	24.6	2.4	3	100	ZPFS**
QEGS26N-1	●		26	110	19	3.2	4	70	ZPGS**
QEGS32N-1	●		32	150	24.6	3.2	4	120	ZPGS**

Milling

C

● Ex stock ○ On demand

* With internal cooling

Only compatible with clamping blocks of commercially available systems from other manufacturers.

Drilling

Spare parts				
	Insert	ZPES**	ZPFS**	ZPGS**
	H	26-32	26-32	26-32
	Wrench	W50X	W50X	W50X

W50X key must be ordered as an option.

D

Insert		
A402	A403	A406

Technical Information

E

Index

System code > A422

Grade selection > A394

Technical info > A501

Cutting data > A456

Blade

Q E G D 32 N (-1)

1 2 3 4 5 6 7

Blade for parting & grooving

1

Application	
Code	Description
E	External machining

2

Insert seat size [mm]	
Holder/cutting width	
Code	Description
B	2,0
E	2,5
F	3,0
G	4,0
H	5,0
K	6,0
L	8,0

3

No. of cutting edges	
Code	Description
S	Single
D	Double

4

Blade height [mm]

5

Type	
Code	Description
R	Right
L	Left
N	Right and left

6

Blade height –1 mm

7

Clamping block

QZ S 32 32

1 2 3 4

Parting & grooving tool

1

No. of cutting edges	
Code	Description
S	Single
D	Double

2

Clamping surface height [mm]

3

Blade height [mm]

4