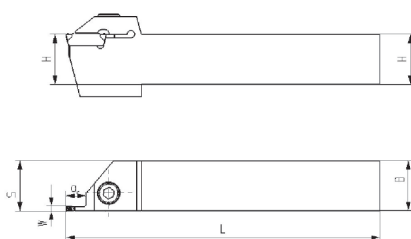
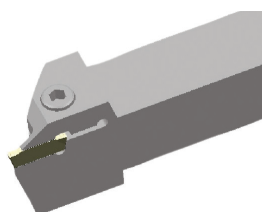


Parting & grooving tool holder (external)

QE**R/L



Article	*	Stock		Dimensions [mm]					Inserts
		R	L	HxB	L	S	W	ar _{max}	
QEED1616R/L10	●	●	16x16	125	15	2.5	10	Z*ED**	
QEED1616R/L17	●	●	16x16	125	15	2.5	17	Z*ED**	
QEED2020R/L17	●	●	20x20	125	19	2.5	17	Z*ED**	
QEED2020R/L10	●	●	20x20	150	10	2.5	10	Z*ED**	
QEED2525R/L10	●	●	25x25	150	19	2.5	10	Z*ED**	
QEED2525R/L17	●	●	25x25	150	19	2.5	17	Z*ED**	
QEGD2020R/L13	●	●	20x20	140	18.5	4	13	Z*GD**	
QEGD2020R/L22	●	●	20x20	140	18.5	4	22	Z*GD**	
QEGD2525R/L13	●	●	25x25	150	23.5	4	13	Z*GD**	
QEGD2525R/L22	●	●	25x25	150	23.5	4	22	Z*GD**	
QEGD3232R/L13	●	●	32x32	170	30.5	4	13	Z*GD**	
QEGD3232R/L22	●	●	32x32	170	30.5	4	22	Z*GD**	
QEHD2525R/L13	●	●	25x25	150	23	5	13	Z*HD**	
QEHD2525R/L22	●	●	25x25	150	23	5	22	Z*HD**	
QEHD3232R/L13	●	●	32x32	170	30	5	13	Z*HD**	
QEHD3232R/L22	●	●	32x32	170	30	5	22	Z*HD**	
QEKD2525R/L13	●	●	25x25	150	22.6	6	13	Z*KD**	
QEKD2525R/L22	●	●	25x25	150	22.6	6	22	Z*KD**	
QEKD3232R/L13	●	●	32x32	170	29.6	6	13	Z*KD**	
QEKD3232R/L22	●	●	32x32	170	29.6	6	22	Z*KD**	

● Ex stock ○ On demand

* With internal cooling

System code > A422

Grade selection > A394

Technical info > A501

Cutting data > A456



External tool holders

Q F G D 2525 R 22 (S) C – (130) (H)

1 2 3 4 5 6 7 8 9 10 11

Holder for parting & grooving	Application		Insert seat size [mm]	
	Code	Description	Holder/cutting width	
	E	External machining	Code	Description
	F	Axial machining	A	1,5
			B	2,0
			E	2,5
			F	3,0
			G	4,0
			H	5,0
			K	6,0
			L	8,0
1	2		3	

No. of cutting edges		Cross section of holder [mm] x [mm]	Type	
Code	Description		Code	Description
S	Single		R	Right
D	Double	L	Left	
4		5	6	

Max. cutting depth [mm]	Serie	
	Code	Description
	S	Swiss turning holder
	DG	Cut-off holder for greater grooving depths with reinforcement
	DGS	Cut-off holder for greater grooving depths without reinforcement
7	8	

With internal cooling	Min. diameter of work piece for first axial grooving [mm]	Cutting head	
		Code	Description
		H	0°
		L	90°
9	10	11	

A

Turning

B

Milling

C

Drilling

D

Technical Information

E

Index