

I-DREAM DRILL INSERTS & HOLDERS

i-DREAM DRILL EINSÄTZE UND HALTER

PLAQUETTES ET PORTE-PLAQUETTE I-DREAM DRILL - USAGE GÉNÉRAL / INOX
INSERTI & PORTAINSERTI I-DREAM DRILL

**- Features of i-Dream Drill Inserts-
 Merkmale des i-Dream Drill Einsätze**

- ▶ Secure and accurate seating resulting in accurate repeatability and concentricity.
 Der sichere und genaue Sitz der Platte garantiert genaue Wiederholbarkeit beim Einsatz und beim Rundlauf.
- i-Dream Drill General / i-Dream Drill allgemeinen**
- ▶ For most steels materials / In den meisten Stahlsorten
i-Dream Drill INOX / i-Dream Drill INOX
- ▶ For tough, ductile materials and stainless steels
 Für zähe, verformbare Werkstoffe und rostfreie Stähle.
- ▶ Light, sharp cutting edge / Scharfe Schneidkante
- ▶ Soft cutting action / Weicher Schnitt
- ▶ Minimize cutting forces / Minimaler Schneidendruck
- ▶ Reduce built-up edge / Reduzierte Gratbildung

**- Features of i-Dream Drill Holders-
 - Merkmale des i-Dream Drill Halter-**

- ▶ Special Alloy Steels maintain its hardness and toughness under high temperatures.
 Speziell legierter Stahl, der seine Härte und Zähigkeit auch bei hohen Temperaturen behält.
- ▶ Innovative surface treatment improves wear resistance and reduces corrosion.
 Innovative Oberflächenbehandlung, die die Verschleissfestigkeit erhöht und die Korrosion vermindert.
- ▶ High Performance flute design allows maximum chip evacuation and minimum interference.
 Optimierte Nutenform für maximale Spanabfuhr.



p.A54, 55

Recommended ToolHolder	Flat Shank	Page	Plain Shank	Page
	INDEXABLE DRILL HOLDER	D245-246	-	-
	ER COLLET CHUCK			D73-115

Unit : mm

Series Range	Insert EDP No.		Insert O.D.			Holder EDP No.	Shank Dia. SD	Shank Length L2	Flange Dia. FD	Drilling Depth		Overall Length L3 Ref.	Screw No.
	General (TiAlN)	INOX (TiCN)	h7							L1	L1		
			dec.	frac.	mm								
E Ø20.00 to Ø21.99	YE1A2000	YE2C2000	.7874		20.00	ZH20003025				3D	60	145.5	TX2021T20
	YE1A2024	YE2C2024	.7969	51/64	20.24	ZH20005025	25	56	32	5D	100	185.5	
	YE1A2050	YE2C2050	.8071		20.50	ZH20007025				7D	140	225.5	
	YE1A2064	YE2C2064	.8125	13/16	20.64	ZH20503025				3D	61.5	147.5	TX2122T20
	YE1A2070	YE2C2070	.8150		20.70	ZH20505025	25	56	32	5D	102.5	188.5	
	YE1A2100	YE2C2100	.8268		21.00	ZH20507025				7D	143.5	229.5	
	YE1A2103	YE2C2103	.8281	53/64	21.03	ZH21003025				3D	63	149.5	TX2122T20
	YE1A2143	YE2C2143	.8438	27/32	21.43	ZH21005025	25	56	32	5D	105	191.5	
	YE1A2150	YE2C2150	.8465		21.50	ZH21007025				7D	147	233.5	
	YE1A2170	YE2C2170	.8543		21.70	ZH21503025				3D	64.5	150.5	
YE1A2183	YE2C2183	.8594	55/64	21.83	ZH21505025	25	56	32	5D	107.5	193.5		
						ZH21507025				7D	150.5	236.5	

▶ Other diameters of insert and shank types of holder are available upon request.

◎ : Excellent ○ : Good

ISO	P										M				K								
	Non-alloy steel					Low alloy steel					High alloyed steel, and tool steel				Stainless steel				Grey cast iron		Nodular cast iron		Malleable cast iron
VDI 3323	1	2	3	4	5	6	7	8	9	10	11	12	13	14	15	16	17	18	19	20			
HRc		13	25	28	32	10	29	32	38	15	35	15	23	10	10	26	3	25	21				
HB	125	190	250	270	300	180	275	300	350	200	325	200	240	180	180	260	160	250	130	230			
YE1A	◎	◎	◎	◎	◎	◎	◎	◎	◎	◎	◎	◎	◎	◎	◎	◎	◎	◎	◎	◎			
YE2C	○	○	○	○	○	○	○	○	○	○	○	◎	◎	◎									

ISO	N										S							H			
	Aluminum-wrought alloy		Aluminum-cast, alloyed			Copper and Copper Alloys (Bronze / Brass)					Non Metallic Materials		Heat Resistant Super Alloys					Titanium Alloys		Hardened steel	Chilled Cast Iron
VDI 3323	21	22	23	24	25	26	27	28	29	30	31	32	33	34	35	36	37	38	39	40	41
HRc											15	30	25	38	34			55	60	42	55
HB	60	100	75	90	130	110	90	100			200	280	250	350	320	400Rm	1050Rm	550	630	400	550
YE1A																					
YE2C	○	○	○	○	○	○	○	○	○	○											

I-DREAM DRILL INSERTS & HOLDERS

i-DREAM DRILL EINSÄTZE UND HALTER

PLAQUETTES ET PORTE-PLAQUETTE I-DREAM DRILL - USAGE GÉNÉRAL / INOX

INSERTI & PORTAINSERTI I-DREAM DRILL

- Features of i-Dream Drill Inserts-

Merkmale des i-Dream Drill Einsätze

- ▶ Secure and accurate seating resulting in accurate repeatability and concentricity.

Der sichere und genaue Sitz der Platte garantiert genaue Wiederholbarkeit beim Einsatz und beim Rundlauf.

i-Dream Drill General / i-Dream Drill allgemeinen

- ▶ For most steels materials / In den meisten Stahlsorten

i-Dream Drill INOX / i-Dream Drill INOX

- ▶ For tough, ductile materials and stainless steels

Für zähe, verformbare Werkstoffe und rostfreie Stähle.

- ▶ Light, sharp cutting edge / Scharfe Schneidkante

- ▶ Soft cutting action / Weicher Schnitt

- ▶ Minimize cutting forces / Minimaler Schneidendruck

- ▶ Reduce built-up edge / Reduzierte Gratbildung

- Features of i-Dream Drill Holders-

- Merkmale des i-Dream Drill Halters-

- ▶ Special Alloy Steels maintain its hardness and toughness under high temperatures.

Speziell legierter Stahl, der seine Härte und Zähigkeit auch bei hohen Temperaturen behält.

- ▶ Innovative surface treatment improves wear resistance and reduces corrosion.

Innovative Oberflächenbehandlung, die die Verschleissfestigkeit erhöht und die Korrosion vermindert.

- ▶ High Performance flute design allows maximum chip evacuation and minimum interference.

Optimierte Nutenform für maximale Spanabfuhr.



Unit : mm

Series Range (mm)	Insert EDP No.		Insert O.D.			Holder EDP No.	Shank Dia. SD	Shank Length L2	Flange Dia. FD	Drilling Depth		Overall Length L3 Ref.	Screw No.
	General (TiAlN)	INOX (TiCN)	h7							L1	L1		
			dec.	frac.	mm								
F Ø22.00 to Ø23.99	YF1A2200	YF2C2200	.8661		22.00	ZH22003025	25	56	32	3D	66	152.4	TX2223T20
	YF1A2223	YF2C2223	.8750	7/8	22.23	ZH22005025				5D	110	196.4	
	YF1A2250	YF2C2250	.8858		22.50	ZH22007025				7D	154	240.4	
	YF1A2262	YF2C2262	.8906	57/64	22.62	ZH22503025	3D	67.5	153.4				
	YF1A2270	YF2C2270	.8937		22.70	ZH22505025	5D	112.5	198.4				
	YF1A2270	YF2C2270	.8937		22.70	ZH22507025	7D	157.5	243.4				
	YF1A2300	YF2C2300	.9055		23.00	ZH23003025	25	56	32	3D	69	155.4	TX2324T20
	YF1A2302	YF2C2302	.9062	29/32	23.02	ZH23005025				5D	115	201.4	
	YF1A2342	YF2C2342	.9219	59/64	23.42	ZH23007025				7D	161	247.4	
	YF1A2350	YF2C2350	.9252		23.50	ZH23503025	3D	70.5	157.4				
	YF1A2370	YF2C2370	.9331		23.70	ZH23505025	5D	117.5	204.4				
	YF1A2381	YF2C2381	.9375	15/16	23.81	ZH23507025	7D	164.5	251.4				

▶ Other diameters of insert and shank types of holder are available upon request.

◎ : Excellent ○ : Good

ISO Material Description	P									M				K						
	Non-alloy steel					Low alloy steel				High alloyed steel, and tool steel	Stainless steel			Grey cast iron	Nodular cast iron		Malleable cast iron			
VDI 3323	1	2	3	4	5	6	7	8	9	10	11	12	13	14	15	16	17	18	19	20
HRc		13	25	28	32	10	29	32	38	15	35	15	23	10	10	26	3	25		21
HB	125	190	250	270	300	180	275	300	350	200	325	200	240	180	180	260	160	250	130	230
YF1A	◎	◎	◎	◎	◎	◎	◎	◎	◎	◎	◎	◎	◎	◎	◎	◎	◎	◎	◎	◎
YF2C	○	○	○	○	○	○	○	○	○	○	○	◎	◎	◎						

ISO Material Description	N					S					H										
	Aluminum-wrought alloy		Aluminum-cast, alloyed			Copper and Copper Alloys (Bronze / Brass)			Non Metallic Materials	Heat Resistant Super Alloys			Titanium Alloys	Hardened steel	Chilled Cast Iron	Hardened Cast Iron					
VDI 3323	21	22	23	24	25	26	27	28	29	30	31	32	33	34	35	36	37	38	39	40	41
HRc											15	30	25	38	34			55	60	42	55
HB	60	100	75	90	130	110	90	100			200	280	250	350	320	400Rm	1050Rm	550	630	400	550
YF1A																					
YF2C	○	○	○	○	○	○	○	○													



I-DREAM DRILL INSERTS & HOLDERS

i-DREAM DRILL EINSÄTZE UND HALTER

- PLAQUETTES ET PORTE-PLAQUETTE I-DREAM DRILL - USAGE GÉNÉRAL / INOX**
- INSERTI & PORTAINSERTI I-DREAM DRILL**

**- Features of i-Dream Drill Inserts-
Merkmale des i-Dream Drill Einsätze**

- ▶ Secure and accurate seating resulting in accurate repeatability and concentricity.
Der sichere und genaue Sitz der Platte garantiert genaue Wiederholbarkeit beim Einsatz und beim Rundlauf.
- i-Dream Drill General / i-Dream Drill allgemeinen**
- ▶ For most steels materials / In den meisten Stahlsorten
i-Dream Drill INOX / i-Dream Drill INOX
- ▶ For tough, ductile materials and stainless steels
Für zähe, verformbare Werkstoffe und rostfreie Stähle.
- ▶ Light, sharp cutting edge / Scharfe Schneidkante
- ▶ Soft cutting action / Weicher Schnitt
- ▶ Minimize cutting forces / Minimaler Schneidendruck
- ▶ Reduce built-up edge / Reduzierte Gratbildung

**- Features of i-Dream Drill Holders-
Merkmale des i-Dream Drill Halter-**

- ▶ Special Alloy Steels maintain its hardness and toughness under high temperatures.
Speziell legierter Stahl, der seine Härte und Zähigkeit auch bei hohen Temperaturen behält.
- ▶ Innovative surface treatment improves wear resistance and reduces corrosion.
Innovative Oberflächenbehandlung, die die Verschleissfestigkeit erhöht und die Korrosion vermindert.
- ▶ High Performance flute design allows maximum chip evacuation and minimum interference.
Optimierte Nutzenform für maximale Spanabfuhr.



p.A54, 55

Flat Shank	Page	Plain Shank	Page
INDEXABLE DRILL HOLDER	D245-246	-	-
ER COLLET CHUCK		D73-115	

Unit : mm

Series Range	Insert EDP No.		Insert O.D.			Holder EDP No.	Shank Dia. SD	Shank Length L2	Flange Dia. FD	Drilling Depth		Overall Length L3 Ref.	Screw No.	
	General (TiAlN)	INOX (TiCN)	dec.	frac.	mm					L1	L3 Ref.			
G Ø24.00 to Ø25.99	YG1A2400	YG2C2400	.9449	-	24.00	ZH24003032	32	60	37	3D	72	164.8	TX2425T20	
	YG1A2421	YG2C2421	.9531	61/64	24.21	ZH24005032				5D	120			212.8
	YG1A2450	YG2C2450	.9646	-	24.50	ZH24007032				7D	168			260.8
	YG1A2461	YG2C2461	.9688	31/32	24.61	ZH24503032	3D	73.5	165.8					
	YG1A2470	YG2C2470	.9724	-	24.70	ZH24505032	5D	122.5	214.8					
	YG1A2500	YG2C2500	.9843	63/64	25.00	ZH24507032	7D	171.5	263.8					
	YG1A2540	YG2C2540	1.0000	1	25.40	ZH25003032	3D	75	167.8					
	YG1A2550	YG2C2550	1.0039	-	25.50	ZH25005032	5D	125	217.8					
	YG1A2567	YG2C2567	1.0106	-	25.67	ZH25007032	7D	175	267.8					
	YG1A2570	YG2C2570	1.0118	-	25.70	ZH25503032	3D	76.5	170.8					
YG1A2580	YG2C2580	1.0156	1-1/64	25.80	ZH25505032	5D	127.5	221.8						
					ZH25507032	7D	178.5	272.8				TX2526T20		

▶ Other diameters of insert and shank types of holder are available upon request.

◎ : Excellent ○ : Good

ISO	P										M				K								
	Non-alloy steel					Low alloy steel					High alloyed steel, and tool steel				Stainless steel				Grey cast iron		Nodular cast iron		Malleable cast iron
VDI 3323	1	2	3	4	5	6	7	8	9	10	11	12	13	14	15	16	17	18	19	20			
HRc	13	25	28	32	32	10	29	32	38	15	35	15	23	10	10	26	3	25	21				
HB	125	190	250	270	300	180	275	300	350	200	325	200	240	180	180	260	160	250	130	230			
YG1A	◎	◎	◎	◎	◎	◎	◎	◎	◎	◎	◎	◎	◎	◎	◎	◎	◎	◎	◎	◎			
YG2C	○	○	○	○	○	○	○	○	○	○	○	◎	◎	◎									

ISO	N					S										H					
	Aluminum-wrought alloy		Aluminum-cast, alloyed			Copper and Copper Alloys (Bronze / Brass)			Non Metallic Materials		Heat Resistant Super Alloys					Titanium Alloys		Hardened steel	Chilled Cast Iron	Hardened Cast Iron	
VDI 3323	21	22	23	24	25	26	27	28	29	30	31	32	33	34	35	36	37	38	39	40	41
HRc											15	30	25	38	34			55	60	42	55
HB	60	100	75	90	130	110	90	100			200	280	250	350	320	400Rm	1050Rm	550	630	400	550
YG1A																					
YG2C	○	○	○	○	○	○	○	○	○	○											

I-DREAM DRILL INSERTS & HOLDERS

● i-DREAM DRILL EINSÄTZE UND HALTER

○ PLAQUETTES ET PORTE-PLAQUETTE I-DREAM DRILL - USAGE GÉNÉRAL / INOX

○ INSERTI & PORTAINSERTI I-DREAM DRILL

- Features of i-Dream Drill Inserts-

Merkmale des i-Dream Drill Einsätze

- ▶ Secure and accurate seating resulting in accurate repeatability and concentricity.

Der sichere und genaue Sitz der Platte garantiert genaue Wiederholbarkeit beim Einsatz und beim Rundlauf.

i-Dream Drill General / i-Dream Drill allgemeinen

- ▶ For most steels materials / In den meisten Stahlsorten

i-Dream Drill INOX / i-Dream Drill INOX

- ▶ For tough, ductile materials and stainless steels

Für zähe, verformbare Werkstoffe und rostfreie Stähle.

- ▶ Light, sharp cutting edge / Scharfe Schneidkante

- ▶ Soft cutting action / Weicher Schnitt

- ▶ Minimize cutting forces / Minimaler Schneidendruck

- ▶ Reduce built-up edge / Reduzierte Gratbildung

- Features of i-Dream Drill Holders-

- Merkmale des i-Dream Drill Halters-

- ▶ Special Alloy Steels maintain its hardness and toughness under high temperatures.

Speziell legierter Stahl, der seine Härte und Zähigkeit auch bei hohen Temperaturen behält.

- ▶ Innovative surface treatment improves wear resistance and reduces corrosion.

Innovative Oberflächenbehandlung, die die Verschleissfestigkeit erhöht und die Korrosion vermindert.

- ▶ High Performance flute design allows maximum chip evacuation and minimum interference.

Optimierte Nutenform für maximale Spanabfuhr.



p.A54, 55



Flat Shank	Page	Plain Shank	Page
INDEXABLE DRILL HOLDER	D245-246	-	-
ER COLLET CHUCK			D73-115

Unit : mm

Series Range (mm)	Insert EDP No.		Insert O.D.			Holder EDP No.	Shank Dia. SD	Shank Length L2	Flange Dia. FD	Drilling Depth		Overall Length L3 Ref.	Screw No.
	General (TiAlN)	INOX (TiCN)	h7							L1	L3 Ref.		
			dec.	frac.	mm								
H Ø26.00 to Ø27.99	YH1A2600	YH2C2600	1.0236	-	26.00	ZH26003032	32	60	37	3D	78	171.2	TX2627T25
	YH1A2619	YH2C2619	1.0312	1-1/32	26.19	ZH26005032				5D	130	223.2	
	YH1A2650	YH2C2650	1.0433		26.50	ZH26007032				7D	182	275.2	
	YH1A2659	YH2C2659	1.0469	1-3/64	26.59	ZH26503032	3D	79.5	172.2				
	YH1A2699	YH2C2699	1.0625	1-1/16	26.99	ZH26505032	5D	132.5	225.2				
						ZH26507032	7D	185.5	278.2				
	YH1A2700	YH2C2700	1.0630	-	27.00	ZH27003032	32	60	37	3D	81	174.2	TX2728T25
	YH1A2750	YH2C2750	1.0827	-	27.50	ZH27005032				5D	135	228.2	
	YH1A2778	YH2C2778	1.0938	1-3/32	27.78	ZH27007032				7D	189	282.2	
						ZH27503032	3D	82.5	175.2				
						ZH27505032	5D	137.5	230.2				
						ZH27507032	7D	192.5	285.2				

▶ Other diameters of insert and shank types of holder are available upon request.

◎ : Excellent ○ : Good

ISO Material Description	P									M				K							
	Non-alloy steel					Low alloy steel				High alloyed steel, and tool steel	Stainless steel			Grey cast iron	Nodular cast iron		Malleable cast iron				
VDI 3323	1	2	3	4	5	6	7	8	9	10	11	12	13	14	15	16	17	18	19	20	
HRc		13	25	28	32	10	29	32	38	15	35	15	23	10	10	26	3	25		21	
HB	125	190	250	270	300	180	275	300	350	200	325	200	240	180	180	260	160	250	130	230	
YH1A	◎	◎	◎	◎	◎	◎	◎	◎	◎	◎	◎	◎	◎	◎	◎	◎	◎	◎	◎	◎	
YH2C	○	○	○	○	○	○	○	○	○	○	○	◎	◎	◎							
ISO Material Description	N				S					H											
	Aluminum-wrought alloy		Aluminum-cast, alloyed		Copper and Copper Alloys (Bronze / Brass)			Non Metallic Materials		Heat Resistant Super Alloys			Titanium Alloys		Hardened steel	Chilled Cast Iron	Hardened Cast Iron				
VDI 3323	21	22	23	24	25	26	27	28	29	30	31	32	33	34	35	36	37	38	39	40	41
HRc											15	30	25	38	34			55	60	42	55
HB	60	100	75	90	130	110	90	100			200	280	250	350	320	400Rm	1050Rm	550	630	400	550
YH1A																					
YH2C	○	○	○	○	○	○	○	○													

I-DREAM DRILL INSERTS & HOLDERS

i-DREAM DRILL EINSÄTZE UND HALTER

PLAQUETTES ET PORTE-PLAQUETTE I-DREAM DRILL - USAGE GÉNÉRAL / INOX
INSERTI & PORTAINSERTI I-DREAM DRILL

**- Features of i-Dream Drill Inserts-
 Merkmale des i-Dream Drill Einsätze**

- ▶ Secure and accurate seating resulting in accurate repeatability and concentricity.
 Der sichere und genaue Sitz der Platte garantiert genaue Wiederholbarkeit beim Einsatz und beim Rundlauf.
- i-Dream Drill General / i-Dream Drill allgemeinen**
- ▶ For most steels materials / In den meisten Stahlsorten
i-Dream Drill INOX / i-Dream Drill INOX
- ▶ For tough, ductile materials and stainless steels
 Für zähe, verformbare Werkstoffe und rostfreie Stähle.
- ▶ Light, sharp cutting edge / Scharfe Schneidkante
- ▶ Soft cutting action / Weicher Schnitt
- ▶ Minimize cutting forces / Minimaler Schneidendruck
- ▶ Reduce built-up edge / Reduzierte Gratbildung

**- Features of i-Dream Drill Holders-
 - Merkmale des i-Dream Drill Halter-**

- ▶ Special Alloy Steels maintain its hardness and toughness under high temperatures.
 Speziell legierter Stahl, der seine Härte und Zähigkeit auch bei hohen Temperaturen behält.
- ▶ Innovative surface treatment improves wear resistance and reduces corrosion.
 Innovative Oberflächenbehandlung, die die Verschleissfestigkeit erhöht und die Korrosion vermindert.
- ▶ High Performance flute design allows maximum chip evacuation and minimum interference.
 Optimierte Nutenform für maximale Spanabfuhr.



p.A54, 55

Recommended ToolHolder	Flat Shank	Page	Plain Shank	Page
	INDEXABLE DRILL HOLDER	D245-246	-	-
	ER COLLET CHUCK			D73-115

Unit : mm

Series Range	Insert EDP No.		Insert O.D.			Holder EDP No.	Shank Dia. SD	Shank Length L2	Flange Dia. FD	Drilling Depth		Overall Length L3 Ref.	Screw No.	
	General (TiAlN)	INOX (TiCN)	h7							L1	L1			
			dec.	frac.	mm									
Ø28.00 to Ø29.99	Y11A2800	Y12C2800	1.1024	-	28.00	ZH28003032	32	60	37	3D	84	178.2	TX2829T25	
	Y11A2818	Y12C2818	1.1094	1-7/64	28.18	ZH28005032				5D	140	234.2		
						ZH28007032				7D	196	290.2		
	Y11A2850	Y12C2850	1.1220	-	28.50	ZH28503032	32	60	37	3D	85.5	179.2		TX2930T25
	Y11A2858	Y12C2858	1.1250	1-1/8	28.58	ZH28505032				5D	142.5	236.2		
						ZH28507032				7D	199.5	293.2		
	Y11A2900	Y12C2900	1.1417	-	29.00	ZH29003032	32	60	37	3D	87	182.2	TX2930T25	
	Y11A2937	Y12C2937	1.1562	1-5/32	29.37	ZH29005032				5D	145	240.2		
						ZH29007032				7D	203	298.2		
	Y11A2950	Y12C2950	1.1614	-	29.50	ZH29503032	32	60	37	3D	88.5	183.2		TX2930T25
	Y11A2977	Y12C2977	1.1719	1-11/64	29.77	ZH29505032				5D	147.5	242.2		
						ZH29507032				7D	206.5	301.2		

▶ Other diameters of insert and shank types of holder are available upon request.

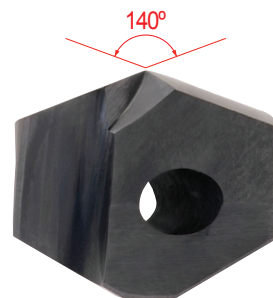
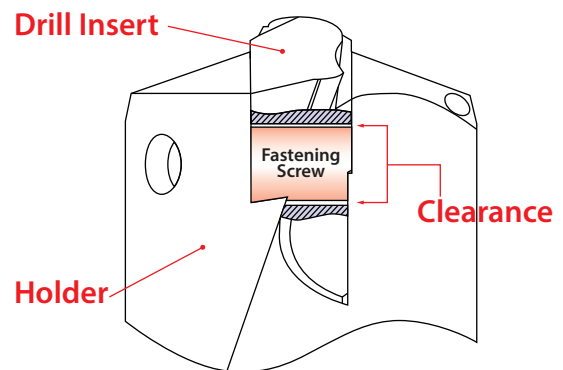
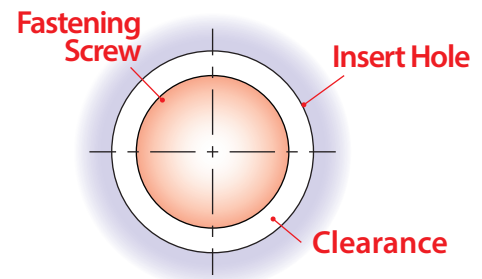
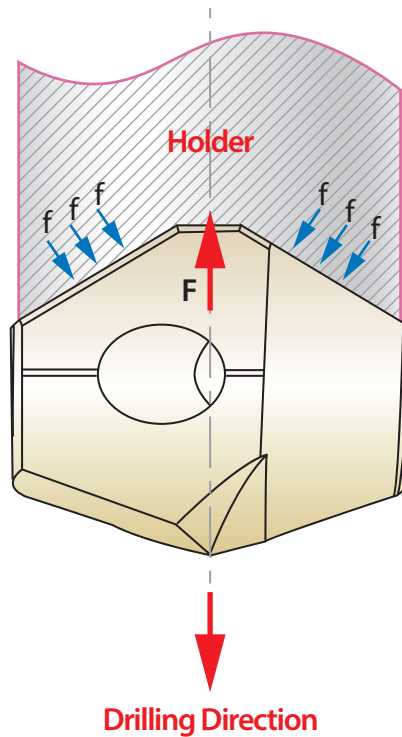
◎ : Excellent ○ : Good

ISO	P										M				K								
	Non-alloy steel					Low alloy steel					High alloyed steel, and tool steel				Stainless steel				Grey cast iron		Nodular cast iron		Malleable cast iron
VDI 3323	1	2	3	4	5	6	7	8	9	10	11	12	13	14	15	16	17	18	19	20			
HRc		13	25	28	32	10	29	32	38	10	15	15	23	10	10	26	3	25		21			
HB	125	190	250	270	300	180	275	300	350	200	325	200	240	180	180	260	160	250	130	230			
Y11A	◎	◎	◎	◎	◎	◎	◎	◎	◎	◎	◎	◎	◎	◎	◎	◎	◎	◎	◎	◎			
Y12C	○	○	○	○	○	○	○	○	○	○	○	◎	◎	◎									

ISO	N										S							H			
	Aluminum-wrought alloy		Aluminum-cast, alloyed			Copper and Copper Alloys (Bronze / Brass)					Non Metallic Materials		Heat Resistant Super Alloys					Titanium Alloys		Hardened steel	Chilled Cast Iron
VDI 3323	21	22	23	24	25	26	27	28	29	30	31	32	33	34	35	36	37	38	39	40	41
HRc											15	30	25	38	34	34	55	60	42	55	
HB	60	100	75	90	130	110	90	100			200	280	250	350	320	400Rm	1050Rm	550	630	400	550
Y11A																					
Y12C	○	○	○	○	○	○	○	○	○	○											

Stable Insert locking System

- V type locking system allowed for stabilized drilling
- Design that fastening screw doesn't touch insert to protect the insert locking system from the vibration during the drilling cycle



Self-Centering 140° Point & Helical Thinning

- Excellent Centering
- Minimized cutting resistance
- Design for maximum toughness, hardness and chip evacuation
- High penetration rate
- Reduced heat from cutting edge processing to allow long tool life
- Lower required torque and horsepower



SELECTION GUIDE



SERIES	YA1A	YA2C	YB1A	YB2C
TYPE	A		B	
SIZE MIN	12.00		14.00	
SIZE MAX	13.89		15.87	
PAGE	A44		A45	

SURFACE TREATMENT	TiAIN	TiCN	TiAIN	TiCN
-------------------	-------	------	-------	------

CARBIDE INSERTS & HOLDERS

i-DREAM DRILLS

For General Steels and Stainless Steels



Please visit globalyg1.com/mat for material search

◎ : Excellent ○ : Good

Recommended cutting conditions : p.A54, 55

ISO	VDI 3323	Material Description	Composition / Structure / Heat Treatment		HB	HRc	TiAIN	TiCN	TiAIN	TiCN
P	1	Non-alloy steel	About 0.15% C	Annealed	125		◎	○	◎	○
	2		About 0.45% C	Annealed	190	13	◎	○	◎	○
	3		About 0.45% C	Quenched & Tempered	250	25	◎	○	◎	○
	4		About 0.75% C	Annealed	270	28	◎	○	◎	○
	5		About 0.75% C	Quenched & Tempered	300	32	◎		◎	
	6	Low alloy steel		Annealed	180	10	◎	○	◎	○
	7			Quenched & Tempered	275	29	◎	○	◎	○
	8			Quenched & Tempered	300	32	◎		◎	
	9			Quenched & Tempered	350	38	◎		◎	
	10		High alloyed steel, and tool steel		Annealed	200	15	◎	○	◎
	11			Quenched & Tempered	325	35	◎		◎	
M	12	Stainless steel	Ferritic / Martensitic	Annealed	200	15		◎		◎
	13		Martensitic	Quenched & Tempered	240	23		◎		◎
	14		Austenitic		180	10		◎		◎
K	15	Grey cast iron	Pearlitic / ferritic		180	10	◎		◎	
	16		Pearlitic (Martensitic)		260	26	◎		◎	
	17	Nodular cast iron	Ferritic		160	3	◎		◎	
	18		Pearlitic		250	25	◎		◎	
	19		Ferritic		130		◎		◎	
20	Malleable cast iron	Pearlitic		230	21	◎		◎		
N	21	Aluminum-wrought alloy	Not Curable		60			○		○
	22		Curable Hardened		100			○		○
	23	Aluminum-cast, alloyed	≤ 12% Si, Not Curable		75			○		○
	24		≤ 12% Si, Curable Hardened		90			○		○
	25		> 12% Si, Not Curable		130			○		○
	26	Copper and Copper Alloys (Bronze / Brass)	Cutting Alloys, PB>1%		110			○		○
	27		CuZn, CuSnZn (Brass)		90			○		○
	28		CuSn, lead-free copper and electrolytic copper		100			○		○
	29		Non Metallic Materials							
	30		Rubber, Wood, etc.							
S	31	Heat Resistant Super Alloys	Fe Based	Annealed	200	15				
	32			Cured	280	30				
	33			Annealed	250	25				
	34		Ni or Co Based	Cured	350	38				
	35			Cast	320	34				
	36			Pure Titanium	400 Rm					
37	Alpha + Beta Alloys	Hardened	1050 Rm							
H	38	Hardened steel	Hardened		550	55				
	39		Hardened		630	60				
	40		Chilled Cast Iron		400	42				
	41		Hardened Cast Iron		550	55				

YC1A	YC2C	YD1A	YD2C	YE1A	YE2C	YF1A	YF2C	YG1A	YG2C
C		D		E		F		G	
16.00		18.00		20.00		22.00		24.00	
17.86		19.84		21.83		23.81		25.80	
A46		A47		A48		A49		A50	
TiAIN	TiCN	TiAIN	TiCN	TiAIN	TiCN	TiAIN	TiCN	TiAIN	TiCN



◎	○	◎	○	◎	○	◎	○	◎	○	1
◎	○	◎	○	◎	○	◎	○	◎	○	2
◎	○	◎	○	◎	○	◎	○	◎	○	3
◎	○	◎	○	◎	○	◎	○	◎	○	4
◎	○	◎	○	◎	○	◎	○	◎	○	5
◎	○	◎	○	◎	○	◎	○	◎	○	6 P
◎	○	◎	○	◎	○	◎	○	◎	○	7
◎	○	◎	○	◎	○	◎	○	◎	○	8
◎	○	◎	○	◎	○	◎	○	◎	○	9
◎	○	◎	○	◎	○	◎	○	◎	○	10
◎	○	◎	○	◎	○	◎	○	◎	○	11
	◎		◎		◎		◎		◎	12
	◎		◎		◎		◎		◎	13 M
	◎		◎		◎		◎		◎	14
◎		◎		◎		◎		◎		15
◎		◎		◎		◎		◎		16
◎		◎		◎		◎		◎		17 K
◎		◎		◎		◎		◎		18
◎		◎		◎		◎		◎		19
◎		◎		◎		◎		◎		20
	○		○		○		○		○	21
	○		○		○		○		○	22
	○		○		○		○		○	23
	○		○		○		○		○	24
	○		○		○		○		○	25 N
	○		○		○		○		○	26
	○		○		○		○		○	27
	○		○		○		○		○	28
										29
										30
										31
										32
										33
										34 S
										35
										36
										37
										38
										39 H
										40
										41

HSS

i-ONE DRILLS

i-DREAM DRILLS

DREAM DRILLS -PRO

DREAM DRILLS -GENERAL

DREAM DRILLS -HIGH FEED

DREAM DRILLS -FLAT BOTTOM

DREAM DRILLS -INOX

DREAM DRILLS -ALU

DREAM DRILLS -MQL

DREAM DRILLS for HIGH HARDENED STEELS

GENERAL CARBIDE DRILLS

MULTI-1 DRILLS

HPD DRILLS

GOLD-P DRILLS

SUPER-GP DRILLS

STRAIGHT SHANK DRILLS

TAPER SHANK DRILLS

NC-SPOTTING DRILLS

CENTER DRILLS

SPADE DRILLS

REAMERS

COUNTER SINKS

COUNTER BORES

TECHNICAL DATA

SELECTION GUIDE



SERIES	YH1A	YH2C
TYPE	H	
SIZE MIN	26.00	
SIZE MAX	27.78	
PAGE	A51	
SURFACE TREATMENT	TiAlN	TiCN

CARBIDE INSERTS & HOLDERS

i-DREAM DRILLS

For General Steels and Stainless Steels



Please visit globalyg1.com/mat for material search

◎ : Excellent ○ : Good

Recommended cutting conditions : p.A54, 55

ISO	VDI 3323	Material Description	Composition / Structure / Heat Treatment	HB	HRc		
P	1	Non-alloy steel	About 0.15% C Annealed	125		◎	○
	2		About 0.45% C Annealed	190	13	◎	○
	3		About 0.45% C Quenched & Tempered	250	25	◎	○
	4		About 0.75% C Annealed	270	28	◎	○
	5	About 0.75% C Quenched & Tempered	300	32	◎		
	6	Low alloy steel	Annealed	180	10	◎	○
	7		Quenched & Tempered	275	29	◎	○
	8		Quenched & Tempered	300	32	◎	
	9		Quenched & Tempered	350	38	◎	
	10		High alloyed steel, and tool steel	Annealed	200	15	◎
	11	Quenched & Tempered		325	35	◎	
M	12	Stainless steel	Ferritic / Martensitic Annealed	200	15		◎
	13		Martensitic Quenched & Tempered	240	23		◎
	14		Austenitic	180	10		◎
K	15	Grey cast iron	Pearlitic / ferritic	180	10	◎	
	16		Pearlitic (Martensitic)	260	26	◎	
	17	Nodular cast iron	Ferritic	160	3	◎	
	18		Pearlitic	250	25	◎	
	19		Ferritic	130		◎	
20	Malleable cast iron	Pearlitic	230	21	◎		
N	21	Aluminum-wrought alloy	Not Curable	60			○
	22		Curable Hardened	100			○
	23	Aluminum-cast, alloyed	≤ 12% Si, Not Curable	75			○
	24		≤ 12% Si, Curable Hardened	90			○
	25		> 12% Si, Not Curable	130			○
	26	Copper and Copper Alloys (Bronze / Brass)	Cutting Alloys, PB>1%	110			○
	27		CuZn, CuSnZn (Brass)	90			○
	28		CuSn, lead-free copper and electrolytic copper	100			○
	29		Non Metallic Materials	Duroplastic, Fiber Reinforced Plastic			
30	Rubber, Wood, etc.						
S	31	Heat Resistant Super Alloys	Fe Based Annealed	200	15		
	32		Cured	280	30		
	33		Annealed	250	25		
	34	Titanium Alloys	Ni or Co Based Cured	350	38		
	35		Cast	320	34		
	36		Pure Titanium	400 Rm			
37	Alpha + Beta Alloys	Hardened	1050 Rm				
H	38	Hardened steel	Hardened	550	55		
	39		Hardened	630	60		
	40	Chilled Cast Iron	Cast	400	42		
	41	Hardened Cast Iron	Hardened	550	55		

Y11A	Y12C	YJ1A	YJ2C	ZH*3	ZH*5	ZH*7
I		J				
28.00		30.00				
29.77		31.75				
A52		A53				
TiAlN	TiCN	TiAlN	TiCN	3XD	5XD	7XD



⊙	○	⊙	○				1
⊙	○	⊙	○				2
⊙	○	⊙	○				3
⊙	○	⊙	○				4
⊙	○	⊙	○				5
⊙	○	⊙	○				6 P
⊙	○	⊙	○				7
⊙	○	⊙	○				8
⊙	○	⊙	○				9
⊙	○	⊙	○				10
⊙	○	⊙	○				11
	⊙		⊙				12
	⊙		⊙				13 M
	⊙		⊙				14
⊙		⊙					15
⊙		⊙					16
⊙		⊙					17 K
⊙		⊙					18
⊙		⊙					19
⊙		⊙					20
	○		○				21
	○		○				22
	○		○				23
	○		○				24
	○		○				25 N
	○		○				26
	○		○				27
	○		○				28
							29
							30
							31
							32
							33
							34 S
							35
							36
							37
							38
							39 H
							40
							41

HSS

i-ONE DRILLS

i-DREAM DRILLS

DREAM DRILLS -PRO

DREAM DRILLS -GENERAL

DREAM DRILLS -HIGH FEED

DREAM DRILLS -FLAT BOTTOM

DREAM DRILLS -INOX

DREAM DRILLS -ALU

DREAM DRILLS -MQL

DREAM DRILLS for HIGH HARDENED STEELS

GENERAL CARBIDE DRILLS

MULTI-1 DRILLS

HPD DRILLS

GOLD-P DRILLS

SUPER-GP DRILLS

STRAIGHT SHANK DRILLS

TAPER SHANK DRILLS

NC-SPOTTING DRILLS

CENTER DRILLS

SPADE DRILLS

REAMERS

COUNTER SINKS

COUNTER BORES

TECHNICAL DATA

YA1A, YB1A, YC1A, YD1A, YE1A, YF1A, YG1A, YH1A, YI1A, YJ1A SERIES

i-DREAM DRILLS - GENERAL

VC = M/MIN
RPM = rev./min.
FEED = mm/rev.

ISO	VDI 3323	Material Description	Vc (m/min)	Feed(mm/rev)					
				Ø12.00-14.99	Ø15.00-17.99	Ø18.00-21.99	Ø22.00-26.99	Ø27.00-31.99	
P	1	Non-alloy steel	95-120	0.16-0.28	0.21-0.35	0.27-0.40	0.34-0.52	0.37-0.55	
	2		80-105	0.14-0.24	0.21-0.35	0.27-0.40	0.34-0.52	0.37-0.55	
	3		60-80	0.12-0.20	0.17-0.28	0.22-0.32	0.30-0.46	0.33-0.49	
	4		55-70	0.10-0.16	0.15-0.25	0.21-0.30	0.25-0.38	0.29-0.43	
	5	Low alloy steel	55-70	0.10-0.16	0.15-0.25	0.21-0.30	0.25-0.38	0.29-0.43	
	6		70-90	0.12-0.20	0.17-0.28	0.22-0.32	0.30-0.46	0.34-0.50	
	7		60-80	0.12-0.20	0.15-0.25	0.22-0.32	0.30-0.46	0.34-0.50	
	8		55-70	0.10-0.16	0.13-0.21	0.21-0.30	0.25-0.38	0.29-0.43	
	9		45-60	0.08-0.12	0.13-0.21	0.21-0.30	0.25-0.38	0.29-0.43	
	10		High alloyed steel, and tool steel	50-65	0.10-0.16	0.13-0.21	0.18-0.26	0.20-0.31	0.24-0.35
	11			40-55	0.10-0.16	0.11-0.18	0.21-0.30	0.20-0.31	0.24-0.35
K	15	Grey cast iron	100-125	0.15-0.26	0.20-0.37	0.27-0.42	0.36-0.51	0.40-0.55	
	16		75-95	0.11-0.20	0.16-0.29	0.20-0.30	0.25-0.35	0.29-0.40	
	17	Nodular cast iron	95-120	0.13-0.22	0.17-0.31	0.21-0.32	0.28-0.40	0.32-0.44	
	18		75-95	0.11-0.20	0.14-0.26	0.19-0.29	0.25-0.35	0.29-0.40	
	19		100-125	0.13-0.22	0.17-0.31	0.21-0.32	0.28-0.40	0.32-0.44	
20	Malleable cast iron	75-95	0.11-0.18	0.14-0.26	0.19-0.29	0.25-0.35	0.29-0.40		

- ▶ The recommendations for speeds, feeds and other parameters presented in this chart are nominal recommendations and should be considered only as good starting points.
Speed and feed reductions (20% reduction in speed and 10% reduction in feed) are recommended.
- ▶ Recommend you to reduce the feed rate to 85%, 70% when you use 5xD, 7xD holders.
- ▶ For use of 7xD holder, we recommend to use a pilot drill with equal to or larger than 140° point angle (0.5xD - 1.5xD).
The use of the centering pre-hole improves hole location, roundness and surface finish.

Comparison with Split Point Drill, Spade Drill & Dream Drill



YA2C, YB2C, YC2C, YD2C, YE2C, YF2C, YG2C, YH2C, YI2C, YJ2C SERIES

i-DREAM DRILLS - INOX

 VC = m/min
 RPM = rev./min.
 FEED = mm/rev.

ISO	VDI 3323	Material Description	Vc (m/min)	Feed(mm/rev)				
				Ø12.00-14.99	Ø15.00-17.99	Ø18.00-21.90	Ø22.00-26.99	Ø27.00-31.99
P	1	Non-alloy steel	95-120	0.16-0.28	0.21-0.35	0.27-0.40	0.34-0.52	0.37-0.55
	2		80-105	0.14-0.24	0.21-0.35	0.27-0.40	0.34-0.52	0.37-0.55
	3		60-80	0.12-0.20	0.17-0.28	0.22-0.32	0.30-0.46	0.33-0.49
	4		55-70	0.10-0.16	0.15-0.25	0.21-0.30	0.25-0.38	0.29-0.43
	6	Low alloy steel	70-90	0.12-0.20	0.17-0.28	0.22-0.32	0.30-0.46	0.34-0.50
	7		60-80	0.12-0.20	0.15-0.25	0.22-0.32	0.30-0.46	0.34-0.50
	10	High alloyed steel, and tool steel	50-65	0.10-0.16	0.13-0.21	0.18-0.26	0.20-0.31	0.24-0.35
M	12	Stainless steel	30-45	0.08-0.14	0.09-0.15	0.10-0.16	0.12-0.20	0.14-0.22
	13		30-45	0.08-0.14	0.09-0.15	0.10-0.16	0.12-0.20	0.14-0.22
	14		45-60	0.10-0.16	0.12-0.18	0.14-0.20	0.15-0.26	0.18-0.28
N	21	Aluminum-wrought alloy	250-330	0.30-0.40	0.35-0.45	0.40-0.50	0.45-0.55	0.50-0.60
	22		200-250	0.30-0.40	0.35-0.45	0.40-0.50	0.45-0.55	0.50-0.60
	23	Aluminum-cast, alloyed	200-250	0.25-0.35	0.30-0.40	0.35-0.45	0.40-0.50	0.45-0.55
	24		150-220	0.25-0.35	0.30-0.40	0.35-0.45	0.40-0.50	0.45-0.55
	25		100-200	0.20-0.30	0.25-0.35	0.30-0.40	0.35-0.45	0.40-0.50
	26		115-145	0.16-0.28	0.23-0.36	0.29-0.36	0.37-0.45	0.41-0.48
	27	Copper and Copper Alloys (Bronze / Brass)	145-185	0.17-0.29	0.24-0.37	0.30-0.38	0.38-0.46	0.42-0.49
	28		95-120	0.06-0.09	0.09-0.13	0.11-0.13	0.15-0.18	0.19-0.22

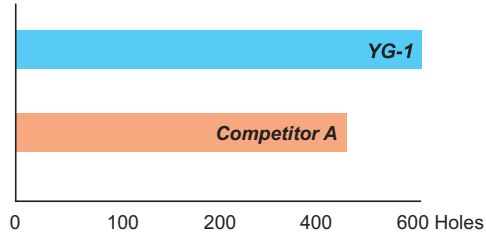
- ▶ The recommendations for speeds, feeds and other parameters presented in this chart are nominal recommendations and should be considered only as good starting points.
Speed and feed reductions (20% reduction in speed and 10% reduction in feed) are recommended.
- ▶ Recommend you to reduce the feed rate to 85%, 70% when you use 5xD, 7xD holders.
- ▶ For use of 7xD holder, we recommend to use a pilot drill with equal to or larger than 140° point angle (0.5xD - 1.5xD).
The use of the centering pre-hole improves hole location, roundness and surface finish.

TEST I GENERAL

Cutting Condition

HOLDER	ZH14505020
INSERT	YB1A1450 / Ø14.5
Work Material	- ASTM : A36 - DIN : St37-2 - JIS : SS400
Cutting Speed	80 m/min
Feed	0.24 mm/rev.
Feedrate	421 mm/min.
RPM	1,756 rev./min.
Drilling	48.0 mm
Coolant	Internal
Machine type	Vertical Machining Center

RESULT



► YG-1 (Total Drilling 600 Holes)



► Competitor A (Total Drilling 470 Holes)

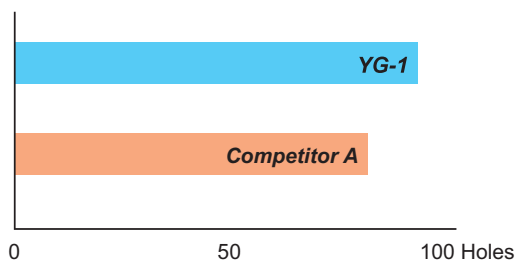


TEST II INOX

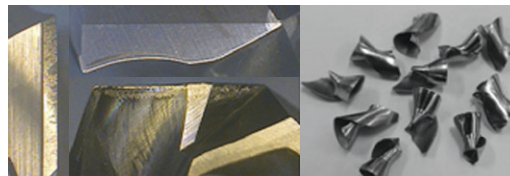
Cutting Condition

HOLDER	ZH14005020
INSERT	YB2C1400 / Ø14.0
Work Material	- AISI : 304 - DIN : X5CrNi189 - JIS : SUS304
Cutting Speed	55 m/min
Feed	0.15 mm/rev.
Feedrate	188 mm/min.
RPM	1,250 rev./min.
Drilling	50.0 mm
Coolant	Internal
Machine type	Vertical Machining Center

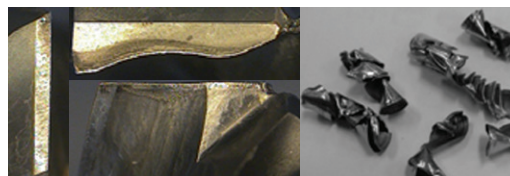
RESULT



► YG-1 (Total Drilling 100 Holes)



► Competitor A (Total Drilling 80 Holes)



ASSEMBLY OF *i*-DREAM DRILLS
MONTAGE DES *i*-DREAM DRILLS





Make sure to clean the insert and insert seat.
Schneideinsatz und Haltersitz sorgfältig reinigen.



Slide the drill insert into the slot of the holder and press down the insert to touch the bottom of the slot.
Schneideinsatz in den Haltersitz einführen und den Schneideinsatz fest auf den Grund des Haltersitzes pressen.

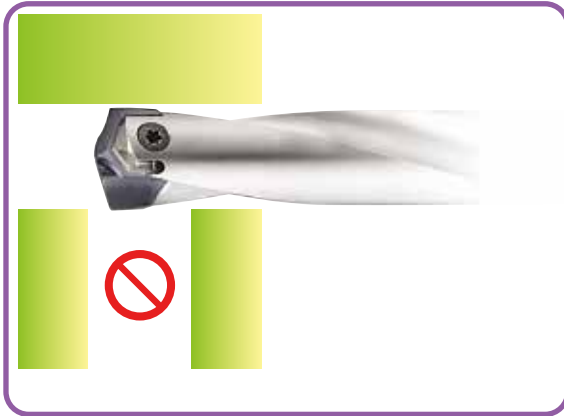


After confirming the insert is pressed down to the bottom of the slot, tighten the screw using anti-seize compound.
Wenn der Schneideinsatz fest auf den Grund des Haltersitzes gepresst ist, die Schraube fest anziehen und dabei Spezialfett verwenden.

WRENCH TYPE	PRODUCT NO.	T-HANDLE No.	SERIES (SIZE)
 <p>WING TYPE</p>	TWWT08	—	A (Ø12.00-Ø13.99)
			B (Ø14.00-Ø15.99)
			C (Ø16.00-Ø17.99)
 <p>TORX BIT TYPE</p>	TWBT15	TWH600	D (Ø18.00-Ø19.99)
	TWBT20		E, F, G (Ø20.00-Ø25.99)
	TWBT25		H, I, J (Ø26.00-Ø31.99)

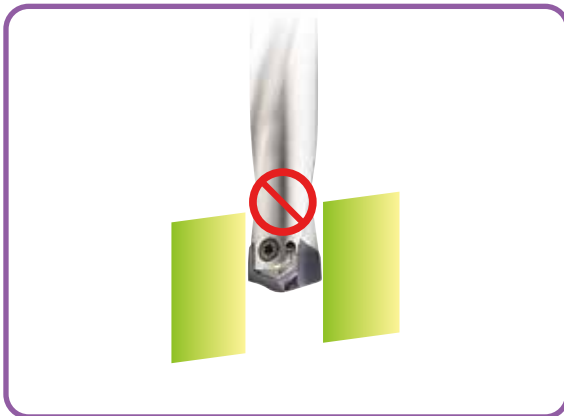
Use the wing type or T-type wrench.
Benutzen Sie den Winkeldreher oder T - Schlüsse

- ▶ Need to use appropriate wrenches and screws as indicated.
Unbedingt die angegebenen Schrauben und Dreher verwenden.
- ▶ It's important to tighten up the screw properly.
Es ist wichtig, die Schraube korrekt und fest anzuziehen.

CAUTION-NOT RECOMMENDABLE APPLICATION
ACHTUNG - NICHT EMPFOHLENE ANWENDUNG


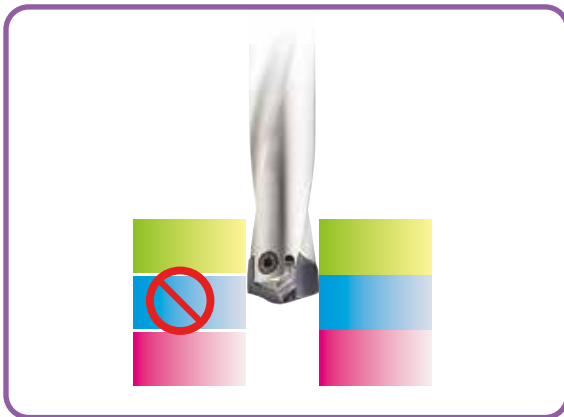
Intersecting cross hole is bigger than the drill insert's Margin Length.

Der Haltersitz ist größer als die Breite des Schneideinsatzes.



Material with slanting entrance and exit over 7 degrees. (If drilling 7 degrees or under slanting surface, reduce the feed about 30-50%)

Werkstücke mit schrägem Anschnitt oder Austritt von über 7°. (Zum Bohren von bis zu 7° Schräge den Vorschub um ca. 30-50% reduzieren).

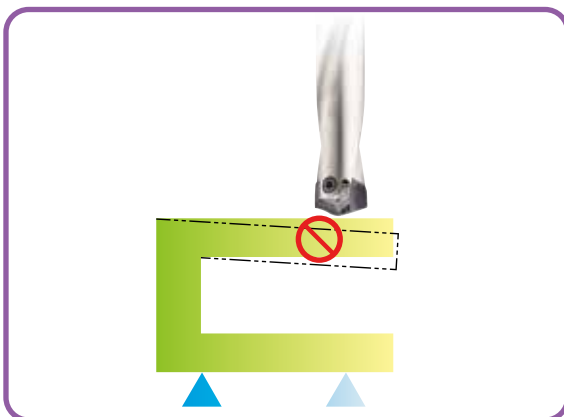


For drilling stacked plates, minimize the space between the plates.

Beim Bohren von Blechpaketen den Abstand der Bleche minimieren.

The space between stacked plates can cause insert breakage or poor chip control.

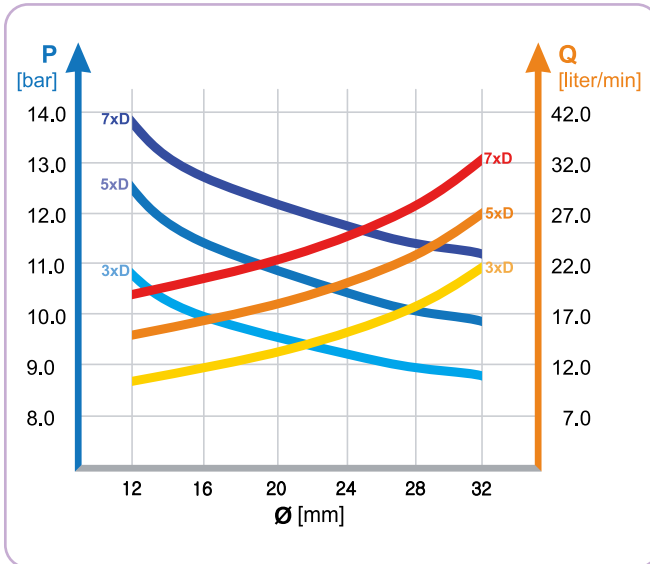
Freiraum in Blechpaketen kann den Bruch des Schneideinsatzes oder schlechte Entspannung verursachen.



The material needs to be fixtured securely before drilling.

Das Werkstück muss fest und sicher aufgespannt sein

**RECOMMENDED COOLANT PRESSURE AND FLOW RATE ON VERTICAL DRILLING
EMPFOHLENE KÜHLMITTELDRUCK UND - MENGE BEIM VERTIKALEN BOHREN**



- Recommended emulsion mix is 6 - 8%.
Empfohlene Emulsionsmischung 6 - 8%.
- For Drilling into Stainless and High Strength steels, a mix of 10% is recommended.
Beim Bohren in rostfreie und hochfeste Stähle werden 10% empfohlen.
- For horizontal drilling, 30% reduction on the coolant pressure and flow rate is possible.
Beim horizontalen Bohren können Kühlmitteldruck und -menge um 30% gemindert werden.
- Dry drilling is possible for 1-2xD drilling. But not recommended.
Trocken Bohren ist möglich bei 1-2xD. Aber nicht empfohlen.

**TROUBLE SHOOTING
PROBLEMLÖSUNGEN**



- 1) Heavy flank wear / Fast flank wear**
- Reduce cutting speed
 - Increase feed



- 2) Chipping on cutting edge**
- Reduce feed
 - Check the rigidity of spindle and chuck
 - Rigid clamping of workpiece



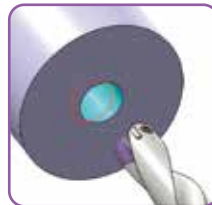
- 3) Build-up on cutting edge**
- Increase cutting speed
 - Use a coated insert



- 4) Chipping or break down on outer corner**
- Reduce feed
 - Rigid clamping of workpiece



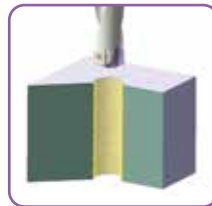
- 5) Wear of land margin**
- Rigid clamping of workpiece
 - Reduce cutting speed
 - Increase coolant flow



- 6) Unsatisfactory positioning of the hole**
- Rigid clamping of workpiece
 - Reduce feed during entrance or exit



- 7) Scratching on holder**
- Rigid clamping of workpiece
 - Reduce feed
 - Increase coolant flow



- 8) Unsatisfactory surface finish**
- Rigid clamping of workpiece
 - Increase coolant flow and pressure