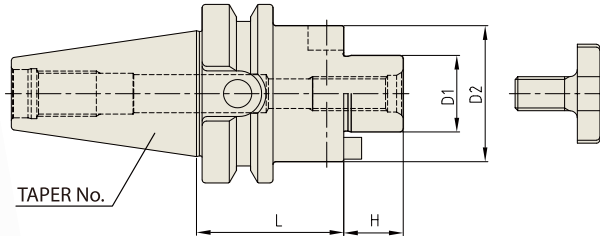


SHELL MILL ARBOR

AUFNAHMEDORN FÜR FRÄSER MIT BOHRUNG
 MANDRIN PORTE-FRAISES
 MANDRINO CON TRASCINAMENTO FISSO
 PORTA FRESAS

**JIS B6339/
 MAS 403-BT**



Parts Refer to page 153-154

◆ **STANDARD**

Unit : mm

| TAPER No. | MODEL No. | EDP No. | D1 | D2 | L | H | BOLT | WEIGHT (kg) |
|-----------|---------------|----------|----|----|----|----|---------|-------------|
| 30 | BT30-SMA16-50 | P2778801 | 16 | 32 | 50 | 17 | M8x16L | 0.58 |
| | BT30-SMA22-50 | P2778802 | 22 | 40 | 50 | 19 | M10x18L | 0.70 |
| | BT30-SMA27-50 | P2778803 | 27 | 48 | 50 | 21 | M12x22L | 0.85 |
| 40 | BT40-SMA16-60 | P2778804 | 16 | 32 | 60 | 17 | M8x16L | 1.17 |
| | BT40-SMA22-60 | P2778805 | 22 | 40 | 60 | 19 | M10x18L | 1.31 |
| | BT40-SMA27-60 | P2778806 | 27 | 48 | 60 | 21 | M12x22L | 1.48 |
| | BT40-SMA32-60 | P2778807 | 32 | 58 | 60 | 24 | M16x26L | 1.72 |
| 50 | BT40-SMA40-60 | P2778808 | 40 | 70 | 60 | 27 | M20x30L | 2.00 |
| | BT50-SMA16-75 | P2778809 | 16 | 32 | 75 | 17 | M8x16L | 3.75 |
| | BT50-SMA22-75 | P2778810 | 22 | 40 | 75 | 19 | M10x18L | 3.90 |
| | BT50-SMA27-75 | P2778811 | 27 | 48 | 75 | 21 | M12x22L | 4.09 |
| | BT50-SMA32-75 | P2778812 | 32 | 58 | 75 | 24 | M16x26L | 4.35 |
| | BT50-SMA40-75 | P2778813 | 40 | 70 | 75 | 27 | M20x30L | 4.77 |
| | BT50-SMA50-75 | P2778814 | 50 | 90 | 75 | 30 | M24x36L | 5.63 |

◆ **EXTENDED**

Unit : mm

| TAPER No. | MODEL No. | EDP No. | D1 | D2 | L | H | BOLT | WEIGHT (kg) |
|-----------|----------------|----------|----|----|-----|----|---------|-------------|
| 40 | BT40-SMA16-120 | P2778815 | 16 | 32 | 120 | 17 | M8x16L | 1.50 |
| | BT40-SMA22-120 | P2778816 | 22 | 40 | 120 | 19 | M10x18L | 1.85 |
| | BT40-SMA27-120 | P2778817 | 27 | 48 | 120 | 21 | M12x22L | 2.27 |
| | BT40-SMA32-120 | P2778818 | 32 | 58 | 120 | 24 | M16x26L | 2.90 |
| 50 | BT50-SMA16-120 | P2778819 | 16 | 32 | 120 | 17 | M8x16L | 4.03 |
| | BT50-SMA22-120 | P2778820 | 22 | 40 | 120 | 19 | M10x18L | 4.25 |
| | BT50-SMA27-120 | P2778821 | 27 | 48 | 120 | 21 | M12x22L | 4.56 |
| | BT50-SMA32-120 | P2778822 | 32 | 58 | 120 | 24 | M16x26L | 5.22 |
| | BT50-SMA40-120 | P2778823 | 40 | 70 | 120 | 27 | M20x30L | 6.04 |

- ▶ Without "Coolant Through".
- ▶ CAT(ANSI B5.50) taper and Inch type products are available.

HYDRAULIC CHUCK

SHRINK FIT HOLDER

ER COLLET CHUCK

END MILL HOLDER & SIDE LOCK ARBOR

SHELL MILL ARBOR

POWER MILLING CHUCK

MORSE TAPER ARBOR

SK SLIM CHUCK

SYNCHRO TAPPING CHUCK

ONE STEP TAPPING CHUCK

TAPPING ER CHUCK

TAPPING CHUCK

FACE MILL ARBOR

COPY MILL ARBOR & INDEXABLE DRILL HOLDER

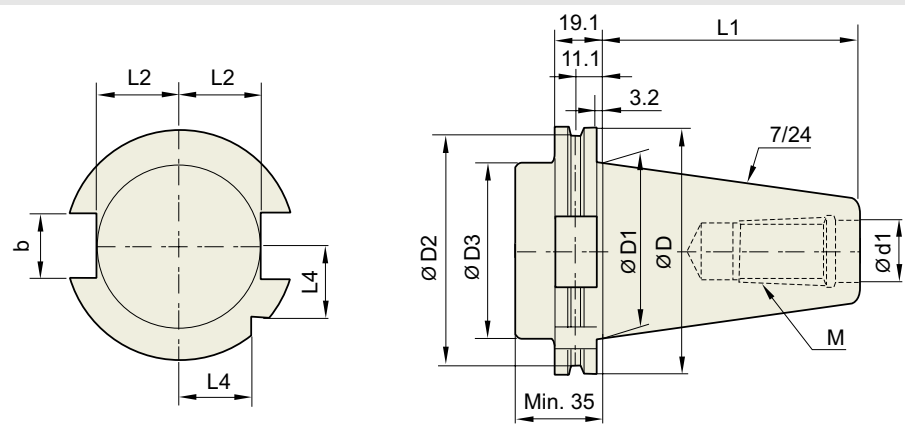
NC DRILL CHUCK & OTHER TOOL HOLDERS

BORING SYSTEM

ACCESSORY & OTHERS

TECHNICAL DATA : SHANK STANDARD

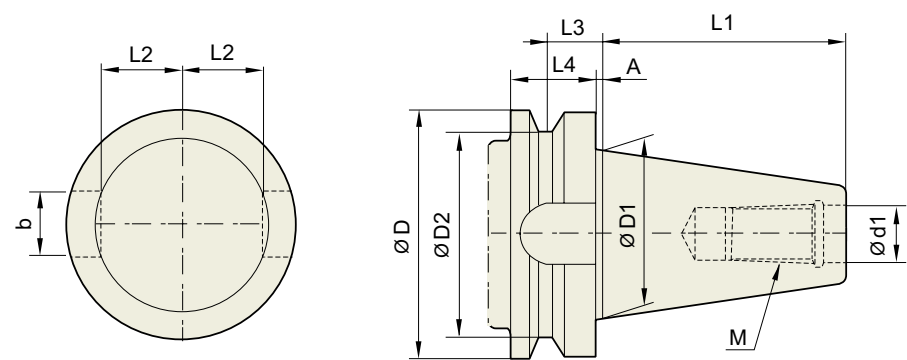
DIN 69871-SK



Unit : mm

| TAPER No. | ØD | ØD1 | ØD2 | ØD3 | Ød1 | L1 | L2 | L3 | L4 | b | M |
|-------------|-------|-------|-------|-----|-----|--------|------|------|------|------|----------|
| SK30 | 50 | 31.75 | 44.3 | 45 | 13 | 47.8 | 16.4 | 19 | 15 | 16.1 | M12×1.75 |
| SK40 | 63.55 | 44.45 | 56.25 | 50 | 17 | 68.4 | 22.8 | 25 | 18.5 | 16.1 | M16×2.0 |
| SK50 | 97.5 | 69.85 | 91.25 | 80 | 25 | 101.75 | 35.5 | 37.7 | 30 | 25.7 | M24×3.0 |

JIS B6339/ MAS 403-BT

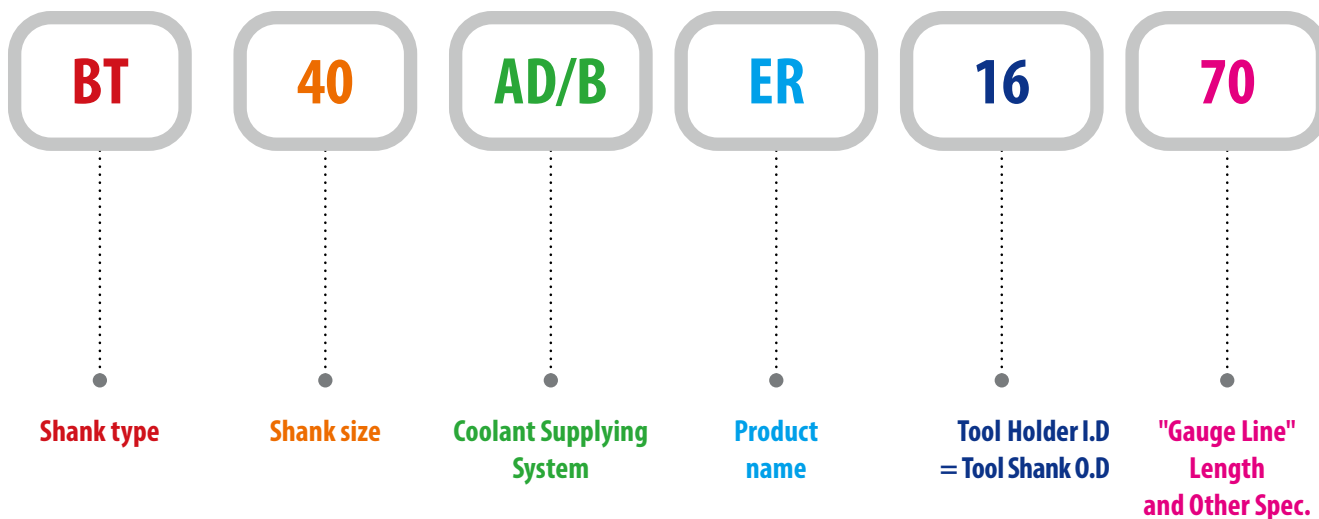


Unit : mm

| TAPER No. | ØD | ØD1 | ØD2 | Ød13. | L1 | L2 | L3 | L4 | A | b | M |
|-------------|-----|--------|-----|-------|-------|------|------|----|---|------|----------|
| BT30 | 46 | 31.75 | 38 | 12.5 | 48.4 | 16.3 | 13.6 | 20 | 2 | 16.1 | M12×1.75 |
| BT40 | 63 | 44.45 | 53 | 17 | 65.4 | 22.6 | 16.6 | 25 | 2 | 16.1 | M16×2 |
| BT50 | 100 | 69.85 | 85 | 25 | 101.8 | 35.4 | 23.2 | 35 | 3 | 25.7 | M24×3 |
| BT60 | 155 | 107.95 | 135 | 31 | 161.8 | 60.1 | 28.2 | 45 | 3 | 25.7 | M30×3.5 |

MODEL NUMBERING SYSTEM & SURFACE FINISH

Model Numbering System



Surface Finish

