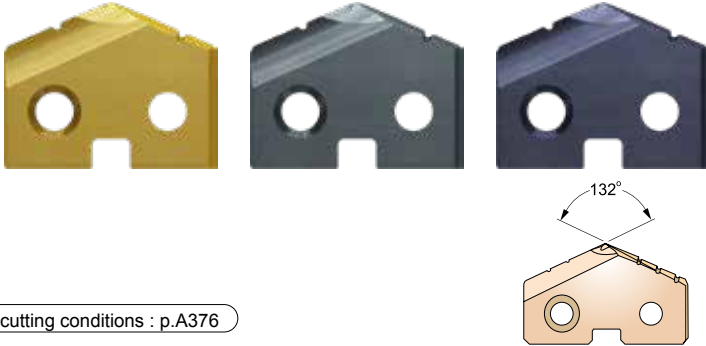


SM-POINT SPADE DRILL INSERTS - SUPER HSS T15

- SM-POINT EINWEG BOHREINSATZ - SUPER HSS T15
- Plaquettes SPADE DRILL, pointe SM - Super HSS T15
- CUSPIDI, SM-POINT - HSS T15



- ▶ For use in high nickel alloys and materials over 280 Brinell.
- ▶ Improved stability and hole straightness by newly developed thinning design.
- ▶ Less thrust force and excellent self-centering.
- ▶ Any non-standard size available.
- ▶ Zur Anwendung bei legierten Stählen mit hohem Nickelanteil und Werkstoffen über 280 Brinell
- ▶ Erhöhte Stabilität und Fluchtgenauigkeit durch neu entwickelte Querschnittsgeometrie
- ▶ Verminderte Bohrkraft und ausgezeichnete Selbstzentrierung
- ▶ Jede Abmessung außerhalb des Kataloges lieferbar

cutting conditions : p.A376

Recommended ToolHolder	Flat Shank	Page	Plain Shank	Page
	INDEXABLE DRILL HOLDER	D245-246	-	-
	ER COLLET CHUCK		D73-115	

Series Min. to Max. mm (inch)	Diameter			Thick	EDP No.		
	Inch (inch)	Metric (mm)	Decimal (inch)	Metric (mm, inch)	SUPER HSS T15		
					TiN	TiCN	TiAlN
Y Ø9.50 (.374) to Ø11.07 (.436)	3/8	9.50	.3740	2.4 (3/32)	SM155095	SM160095	SM165095
		9.53	.3750		SM105024	SM110024	SM115024
	25/64	9.80	.3858		SM155098	SM160098	SM165098
		9.92	.3906		SM105025	SM110025	SM115025
	13/32	10.00	.3937		SM155100	SM160100	SM165100
		10.20	.4016		SM155102	SM160102	SM165102
	27/64	10.32	.4062		SM105026	SM110026	SM115026
		10.50	.4134		SM155105	SM160105	SM165105
	11.00	10.72	.4219		SM105027	SM110027	SM115027
		10.80	.4252		SM155108	SM160108	SM165108
Z Ø11.11(.437) to Ø12.95(.510)	7/16	11.00	.4331	2.4 (3/32)	SM155110	SM160110	SM165110
		11.11	.4375		SM105028	SM110028	SM115028
	29/64	11.50	.4528		SM155115	SM160115	SM165115
		11.51	.4531		SM105029	SM110029	SM115029
	15/32	12.00	.4724		SM155120	SM160120	SM165120
		11.91	.4688		SM105030	SM110030	SM115030
	31/64	12.30	.4844		SM155125	SM160125	SM165125
		12.50	.4921		SM105031	SM110031	SM115031
	1/2	12.70	.5000		SM155125	SM160125	SM165125
		13.00	.5118		SM105032	SM110032	SM115032
0 Ø12.98 (.511) to Ø17.65 (.695)	33/64	13.00	.5118	3.2 (1/8)	SM155130	SM160130	SM165130
		13.10	.5156		SM105033	SM110033	SM115033
	17/32	13.49	.5312		SM155135	SM160135	SM165135
		13.50	.5315		SM105034	SM110034	SM115034
	35/64	13.89	.5469		SM155135	SM160135	SM165135
		14.00	.5512		SM105035	SM110035	SM115035
	9/16	14.29	.5625		SM155140	SM160140	SM165140
		14.50	.5709		SM105036	SM110036	SM115036
	37/64	14.68	.5781		SM155145	SM160145	SM165145
		15.00	.5906		SM105037	SM110037	SM115037
19/32	15.08	.5938	SM155150	SM160150	SM165150		
	15.48	.6094	SM105038	SM110038	SM115038		
5/8	15.50	.6102	SM155155	SM160155	SM165155		
	15.88	.6250	SM105039	SM110039	SM115039		
	16.00	.6299	SM155160	SM160160	SM165160		

◎ : Excellent ○ : Good

ISO Material Description	P										M				K								
	Non-alloy steel					Low alloy steel					High alloyed steel, and tool steel				Stainless steel				Grey cast iron		Nodular cast iron		Malleable cast iron
VDI 3323	1	2	3	4	5	6	7	8	9	10	11	12	13	14	15	16	17	18	19	20			
HRc	125	13	25	28	32	10	29	32	38	15	35	15	23	10	10	26	3	25		21			
HB	125	190	250	270	300	180	275	300	350	200	325	200	240	180	180	260	160	250	130	230			
Recommended	◎	◎	◎	◎		◎	◎	○	○	○	○	○	○	○	○	◎	○	◎	○	◎			

ISO Material Description	N										S						H				
	Aluminum- wrought alloy		Aluminum-cast, alloyed			Copper and Copper Alloys (Bronze / Brass)			Non Metallic Materials		Heat Resistant Super Alloys						Titanium Alloys		Hardened steel	Chilled Cast Iron	Hardened Cast Iron
VDI 3323	21	22	23	24	25	26	27	28	29	30	31	32	33	34	35	36	37	38	39	40	41
HRc											15	30	25	38	34			55	60	42	55
HB	60	100	75	90	130	110	90	100			200	280	250	350	320	400Rm	1050Rm	550	630	400	550
Recommended	○	○									◎	○	○	○	○			○			



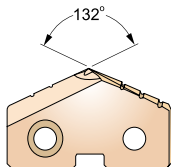
SM-POINT SPADE DRILL INSERTS - SUPER HSS T15

- SM-POINT EINWEG BOHREINSATZ - SUPER HSS T15
- Plaquettes SPADE DRILL, pointe SM - Super HSS T15
- CUSPIDI DI FORATURA SM-POINT - SUPER HSS T15



- For use in high nickel alloys and materials over 280 Brinell.
- Improved stability and hole straightness by newly developed thinning design.
- Less thrust force and excellent self-centering.
- Any non-standard size available.

- Zur Anwendung bei legierten Stählen mit hohem Nickelanteil und Werkstoffen über 280 Brinell
- Erhöhte Stabilität und Fluchtgenauigkeit durch neu entwickelte Querschneidengeometrie
- Verminderte Bohrkraft und ausgezeichnete Selbstzentrierung
- Jede Abmessung außerhalb des Kataloges lieferbar



cutting conditions : p.A376

Recommended ToolHolder	Flat Shank	Page	Plain Shank	Page
	INDEXABLE DRILL HOLDER	D245-246	-	-
		ER COLLET CHUCK		D73-115

Series Min. to Max. mm (inch)	Diameter			Thick Metric (mm, inch)	EDP No.		
	Inch (inch)	Metric (mm)	Decimal (inch)		SUPER HSS T15		
					TiN	TiCN	TiAlN
0 Ø12.98(.511) to Ø17.65(.695)	41/64	16.27	.6406	3.2 (1/8)	SM105041	SM110041	SM115041
		16.50	.6496		SM155165	SM160165	SM165165
	21/32	16.67	.6562		SM105042	SM110042	SM115042
		17.00	.6693		SM155170	SM160170	SM165170
	43/64	17.07	.6719		SM105043	SM110043	SM115043
	11/16	17.46	.6875		SM105044	SM110044	SM115044
		17.50	.6890		SM155175	SM160175	SM165175
	45/64	17.86	.7031		SM105045	SM110045	SM115045
		18.00	.7087		SM155180	SM160180	SM165180
		23/32	18.26		.7188	SM105046	SM110046
1 Ø17.53 (.690) to Ø24.38 (.960)		18.50	.7283	4.0 (5/32)	SM155185	SM160185	SM165185
	47/64	18.65	.7344		SM105047	SM110047	SM115047
		19.00	.7480		SM155190	SM160190	SM165190
	3/4	19.05	.7500		SM105048	SM110048	SM115048
	49/64	19.45	.7656		SM105049	SM110049	SM115049
		19.50	.7677		SM155195	SM160195	SM165195
	25/32	19.84	.7812		SM105050	SM110050	SM115050
		20.00	.7874		SM155200	SM160200	SM165200
	51/64	20.24	.7969		SM105051	SM110051	SM115051
		20.50	.8071		SM155205	SM160205	SM165205
	13/16	20.64	.8125		SM105052	SM110052	SM115052
		21.00	.8268		SM155210	SM160210	SM165210
	27/32	21.43	.8438		SM105054	SM110054	SM115054
	55/64	21.83	.8594		SM105055	SM110055	SM115055
		22.00	.8661		SM155220	SM160220	SM165220
	7/8	22.23	.8750		SM105056	SM110056	SM115056
	57/64	22.62	.8906		SM105057	SM110057	SM115057
		23.00	.9055		SM155230	SM160230	SM165230
29/32	23.02	.9062	SM105058	SM110058	SM115058		
59/64	23.42	.9219	SM105059	SM110059	SM115059		
15/16	23.81	.9375	SM105060	SM110060	SM115060		
	24.00	.9449	SM155240	SM160240	SM165240		

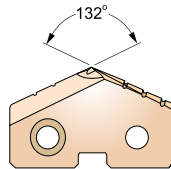
⊙ : Excellent ○ : Good

ISO	P										M				K									
Material Description	Non-alloy steel					Low alloy steel					High alloyed steel, and tool steel				Stainless steel				Grey cast iron		Nodular cast iron		Malleable cast iron	
VDI 3323	1	2	3	4	5	6	7	8	9	10	11	12	13	14	15	16	17	18	19	20				
HRc	13	25	28	32	30	10	29	32	38	15	35	15	23	10	10	26	3	25		21				
HB	125	190	250	270	300	180	275	300	350	200	325	200	240	180	180	260	160	250	130	230				
Recommended	⊙	⊙	⊙	⊙	⊙	⊙	⊙	○	○	○	○	○	○	○	○	⊙	○	⊙	○	⊙				

ISO	N					S										H					
Material Description	Aluminum-wrought alloy		Aluminum-cast, alloyed			Copper and Copper Alloys (Bronze / Brass)			Non Metallic Materials		Heat Resistant Super Alloys					Titanium Alloys		Hardened steel	Chilled Cast Iron	Hardened Cast Iron	
VDI 3323	21	22	23	24	25	26	27	28	29	30	31	32	33	34	35	36	37	38	39	40	41
HRc											15	30	25	38	34			55	60	42	55
HB	60	100	75	90	130	110	90	100			200	280	250	350	320	400Rm	1050Rm	550	630	400	550
Recommended	○	○						○			⊙	○	○	○	○						

SM-POINT SPADE DRILL INSERTS - SUPER HSS T15

- SM-POINT EINWEG BOHREINSATZ - SUPER HSS T15
- Plaquettes SPADE DRILL, pointe SM - Super HSS T15
- CUSPIDI DI FORATURA SM-POINT - SUPER HSS T15



cutting conditions : p.A376

- ▶ For use in high nickel alloys and materials over 280 Brinell.
- ▶ Improved stability and hole straightness by newly developed thinning design.
- ▶ Less thrust force and excellent self-centering.
- ▶ Any non-standard size available.
- ▶ Zur Anwendung bei legierten Stählen mit hohem Nickelanteil und Werkstoffen über 280 Brinell
- ▶ Erhöhte Stabilität und Fluchtgenauigkeit durch neu entwickelte Querschnittsgeometrie
- ▶ Verminderte Bohrkraft und ausgezeichnete Selbstzentrierung
- ▶ Jede Abmessung außerhalb des Kataloges lieferbar

Recommended Tool Holder	Flat Shank	Page	Plain Shank	Page
	INDEXABLE DRILL HOLDER	D245-246	-	-
	ER COLLET CHUCK		D73-115	

Series Min. to Max. mm (inch)	Diameter			Thick Metric (mm, inch)	EDP No.		
	Inch (inch)	Metric (mm)	Decimal (inch)		SUPER HSS T15		
					TiN	TiCN	TiAlN
<p style="font-size: 2em; text-align: center;">2</p> <p>Ø24.41 (.961) to Ø35.05 (1.380)</p>	31/32	24.61	.9688	4.8 (3/16)	SM105062	SM110062	SM115062
	63/64	25.00	.9843		SM155250	SM160250	SM165250
	1	25.40	1.0000		SM105100	SM110100	SM115100
	1-1/64	25.80	1.0156		SM105101	SM110101	SM115101
		26.00	1.0236		SM155260	SM160260	SM165260
	1-1/32	26.19	1.0312		SM105102	SM110102	SM115102
	1-3/64	26.59	1.0469		SM105103	SM110103	SM115103
	1-1/16	26.99	1.0625		SM105104	SM110104	SM115104
		27.00	1.0630		SM155270	SM160270	SM165270
	1-3/32	27.78	1.0938		SM105106	SM110106	SM115106
		28.00	1.1024		SM155280	SM160280	SM165280
	1-7/64	28.18	1.1094		SM105107	SM110107	SM115107
	1-1/8	28.58	1.1250		SM105108	SM110108	SM115108
		29.00	1.1417		SM155290	SM160290	SM165290
	1-5/32	29.37	1.1562		SM105110	SM110110	SM115110
		30.00	1.1811		SM155300	SM160300	SM165300
	1-3/16	30.16	1.1875		SM105112	SM110112	SM115112
	1-7/32	30.96	1.2188		SM105114	SM110114	SM115114
		31.00	1.2205		SM155310	SM160310	SM165310
	1-1/4	31.75	1.2500		SM105116	SM110116	SM115116
		32.00	1.2598		SM155320	SM160320	SM165320
	1-9/32	32.54	1.2812		SM105118	SM110118	SM115118
		33.00	1.2992		SM155330	SM160330	SM165330
	1-5/16	33.34	1.3125		SM105120	SM110120	SM115120
		34.00	1.3386		SM155340	SM160340	SM165340
	1-11/32	34.13	1.3438		SM105122	SM110122	SM115122
	1-3/8	34.93	1.3750		SM105124	SM110124	SM115124
		35.00	1.3780		SM155350	SM160350	SM165350

◎ : Excellent ○ : Good

ISO Material Description	P										M				K					
	Non-alloy steel					Low alloy steel					High alloyed steel, and tool steel		Stainless steel		Grey cast iron		Nodular cast iron		Malleable cast iron	
VDI 3323	1	2	3	4	5	6	7	8	9	10	11	12	13	14	15	16	17	18	19	20
HRc		13	25	28	32	10	29	32	38	15	35	15	23	10	10	26	3	25		21
HB	125	190	250	270	300	180	275	300	350	200	325	200	240	180	180	260	160	250	130	230
Recommended	◎	◎	◎	◎		◎	◎	○	○	○	○	○	○	○	○	◎	○	◎	○	◎

ISO Material Description	N					S										H					
	Aluminum- wrought alloy		Aluminum-cast, alloyed			Copper and Copper Alloys (Bronze / Brass)			Non Metallic Materials		Heat Resistant Super Alloys					Titanium Alloys		Hardened steel	Chilled Cast Iron	Hardened Cast Iron	
VDI 3323	21	22	23	24	25	26	27	28	29	30	31	32	33	34	35	36	37	38	39	40	41
HRc											15	30	25	38	34			55	60	42	55
HB	60	100	75	90	130	110	90	100			200	280	250	350	320	400Rm	1050Rm	550	630	400	550
Recommended	○	○					○				◎	○	○	○	○			○			

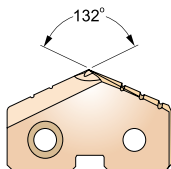


SM-POINT SPADE DRILL INSERTS - SUPER HSS T15

- SM-POINT EINWEG BOHREINSATZ - SUPER HSS T15
- Plaquettes SPADE DRILL, pointe SM - Super HSS T15
- CUSPIDI DI FORATURA SM-POINT - SUPER HSS T15



- For use in high nickel alloys and materials over 280 Brinell.
- Improved stability and hole straightness by newly developed thinning design.
- Less thrust force and excellent self-centering.
- Any non-standard size available.
- Zur Anwendung bei legierten Stählen mit hohem Nickelanteil und Werkstoffen über 280 Brinell
- Erhöhte Stabilität und Fluchtgenauigkeit durch neu entwickelte Querschneidengeometrie
- Verminderte Bohrkraft und ausgezeichnete Selbstzentrierung
- Jede Abmessung außerhalb des Kataloges lieferbar



cutting conditions : p.A376

Recommended Tool Holder	Flat Shank	Page	Plain Shank	Page
	INDEXABLE DRILL HOLDER	D245-246	-	-
	ER COLLET CHUCK			D73-115

Series Min. to Max. mm (inch)	Diameter			Thick Metric (mm, inch)	EDP No.		
	Inch (inch)	Metric (mm)	Decimal (inch)		SUPER HSS T15		
					TiN	TiCN	TiAlN
3 Ø34.37 (1.353) to Ø47.80 (1.882)	1-13/32	35.72	1.4062	6.4 (1/4)	SM105126	SM110126	SM115126
		36.00	1.4173		SM155360	SM160360	SM165360
		1-7/16	36.51		1.4375	SM105128	SM110128
	37.00		1.4567		SM155370	SM160370	SM165370
	1-15/32	37.31	1.4688		SM105130	SM110130	SM115130
		38.00	1.4961		SM155380	SM160380	SM165380
	1-1/2	38.10	1.5000		SM105132	SM110132	SM115132
		1-17/32	38.89		1.5312	SM105134	SM110134
			39.00		1.5354	SM155390	SM160390
		1-9/16	39.69		1.5625	SM105136	SM110136
			40.00		1.5748	SM155400	SM160400
		1-19/32	40.48		1.5938	SM105138	SM110138
			41.00		1.6142	SM155410	SM160410
		1-5/8	41.28		1.6250	SM105140	SM110140
			42.00		1.6535	SM155420	SM160420
		1-21/32	42.07		1.6562	SM105142	SM110142
	1-11/16		42.86		1.6875	SM105144	SM110144
			43.00		1.6929	SM155430	SM160430
	1-23/32		43.66		1.7188	SM105146	SM110146
			44.00		1.7323	SM155440	SM160440
	1-3/4		44.45		1.7500	SM105148	SM110148
			45.00		1.7717	SM155450	SM160450
	1-25/32		45.24		1.7812	SM105150	SM110150
			46.00		1.8110	SM155460	SM160460
1-13/16	46.04		1.8125	SM105152	SM110152	SM115152	
	1-27/32	46.83	1.8438	SM105154	SM110154	SM115154	
		47.00	1.8504	SM155470	SM160470	SM165470	
	1-7/8	47.63	1.8750	SM105156	SM110156	SM115156	

◎ : Excellent ○ : Good

ISO Material Description	P										M				K						
	Non-alloy steel					Low alloy steel					High alloyed steel, and tool steel		Stainless steel				Grey cast iron		Nodular cast iron		Malleable cast iron
VDI 3323	1	2	3	4	5	6	7	8	9	10	11	12	13	14	15	16	17	18	19	20	
HRc	13	25	28	32	36	10	29	32	38	15	35	15	23	10	10	26	3	25		21	
HB	125	190	250	270	300	180	275	300	350	200	325	200	240	180	180	260	160	250	130	230	
Recommended	◎	◎	◎	◎	◎	◎	◎	◎	◎	◎	◎	◎	◎	◎	◎	◎	◎	◎	◎	◎	

ISO Material Description	N									S							H				
	Aluminum- wrought alloy		Aluminum-cast, alloyed			Copper and Copper Alloys (Bronze / Brass)		Non Metallic Materials				Heat Resistant Super Alloys					Titanium Alloys		Hardened steel	Chilled Cast Iron	Hardened Cast Iron
VDI 3323	21	22	23	24	25	26	27	28	29	30	31	32	33	34	35	36	37	38	39	40	41
HRc											15	30	25	38	34			55	60	42	55
HB	60	100	75	90	130	110	90	100			200	280	250	350	320	400Rm	1050Rm	550	630	400	550
Recommended	○	○						○			◎	○	○	○	○						

SELECTION GUIDE



SERIES	1~8	Y,Z,0,1~4	Y,Z,0,1,2
TOOL MATERIAL	HSS M4	SUPER HSS T15	PREMIUM HSS M48
POINT	STANDARD	STANDARD	STANDARD
SIZE MIN	Ø17.86(#1)	Ø9.5(#Y)	Ø9.5(#Y)
SIZE MAX	Ø114.3(#8)	Ø65.09(#4)	Ø35(#2)
PAGE	A286	A292	A297



Please visit globalyg1.com/mat for material search

SURFACE TREATMENT

TiN / TiCN / TiAlN

INSERTS & HOLDERS SPADE DRILLS

For General Machines and Drilling Large Diameters
Longer Tool Life and High Productivity

◎ : Excellent ○ : Good

Recommended cutting conditions : p.A375



ISO	VDI 3323	Material Description	Composition / Structure / Heat Treatment	HB	HRc			
P	1	Non-alloy steel	About 0.15% C Annealed	125		○	◎	◎
	2		About 0.45% C Annealed	190	13	○	◎	◎
	3		About 0.45% C Quenched & Tempered	250	25	○	◎	◎
	4		About 0.75% C Annealed	270	28	○	◎	◎
	5		About 0.75% C Quenched & Tempered	300	32			
	6	Low alloy steel	Annealed	180	10	○	◎	◎
	7		Quenched & Tempered	275	29	○	◎	◎
	8		Quenched & Tempered	300	32		○	◎
	9		Quenched & Tempered	350	38		○	◎
	10		High alloyed steel, and tool steel	Annealed	200	15		○
	11	Quenched & Tempered		325	35		○	◎
M	12	Stainless steel	Ferritic / Martensitic Annealed	200	15	◎	○	
	13		Martensitic Quenched & Tempered	240	23	◎	○	
	14		Austenitic	180	10	◎	○	
K	15	Grey cast iron	Pearlitic / ferritic	180	10	◎	○	○
	16		Pearlitic (Martensitic)	260	26	○	◎	◎
	17	Nodular cast iron	Ferritic	160	3	◎	○	○
	18		Pearlitic	250	25	○	◎	◎
	19		Ferritic	130		◎	○	○
20	Malleable cast iron	Pearlitic	230	21	○	◎	◎	
N	21	Aluminum-wrought alloy	Not Curable	60		◎	○	○
	22		Curable Hardened	100		◎	○	○
	23	Aluminum-cast, alloyed	≤ 12% Si, Not Curable	75				
	24		≤ 12% Si, Curable Hardened	90				
	25		> 12% Si, Not Curable	130				
	26		Copper and Copper Alloys	Cutting Alloys, PB>1%	110			
	27	(Bronze / Brass)	CuZn, CuSnZn (Brass)	90		◎	○	○
	28		CuSn, lead-free copper and electrolytic copper	100				
	29		Non Metallic Materials	Duroplastic, Fiber Reinforced Plastic				
	30		Rubber, Wood, etc.					
S	31	Heat Resistant Super Alloys	Fe Based Annealed	200	15		◎	◎
	32		Cured	280	30		○	◎
	33		Annealed	250	25		○	◎
	34		Ni or Co Based Cured	350	38		○	◎
	35	Cast	320	34		○	◎	
	36	Titanium Alloys	Pure Titanium	400 Rm				
	37		Alpha + Beta Alloys Hardened	1050 Rm				
H	38	Hardened steel	Hardened	550	55		○	◎
	39		Hardened	630	60			
	40	Chilled Cast Iron	Cast	400	42			
	41	Hardened Cast Iron	Hardened	550	55			

REAMERS	TAPER SHANK		TAPER SHANK HOLDERS - INCH/METRIC	A364
COUNTER SINKS	FLANGED SHANK		FLANGED STRAIGHT SHANK HOLDERS - INCH/METRIC	A364
COUNTER BORES	STRAIGHT SHANK		STRAIGHT SHANK HOLDERS - INCH	A382

Y,Z,0,1,2	Y,Z,0,1~3	Y,Z,0,1~3	1~3	Y,Z,0,1~3	Y,Z,0,1,2	Y,Z,0,1,2	Y,Z,0,1~3	Y,Z,0,1~3	Y,Z,0,1,2
CARBIDE K10	CARBIDE K20	CARBIDE P40	HSS M4	SUPER HSS T15	PREMIUM HSS M48	CARBIDE K10	CARBIDE K20	CARBIDE P40	SUPER COBALT T15
STANDARD	STANDARD	STANDARD	SM-POINT	SM-POINT	SM-POINT	SM-POINT	SM-POINT	SM-POINT	FALT BOTTOM
Ø9.5(#Y)	Ø9.5(#Y)	Ø9.5(#Y)	Ø17.86(#1)	Ø9.5(#Y)	Ø9.5(#Y)	Ø9.5(#Y)	Ø9.5(#Y)	Ø9.5(#Y)	Ø9.5(#Y)
Ø35(#2)	Ø47.63(#3)	Ø47.63(#3)	Ø47.63(#3)	Ø47.63(#3)	Ø35(#2)	Ø35(#2)	Ø47.63(#3)	Ø47.63(#3)	Ø35(#2)
A300	A303	A307	A312	A315	A319	A322	A325	A329	A361
TiN / TiCN / TiAlN									TiN / Hardslick / TiAlN



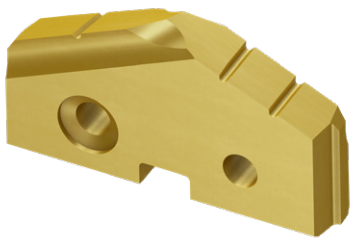
											1	DREAM DRILLS -FLAT BOTTOM
											2	DREAM DRILLS -INOX
											3	DREAM DRILLS -ML
											4	DREAM DRILLS -ML
											5	DREAM DRILLS -ML
											6	DREAM DRILLS -ML
											7	DREAM DRILLS -ML
											8	DREAM DRILLS -ML
											9	DREAM DRILLS -ML
											10	DREAM DRILLS -ML
											11	DREAM DRILLS -ML
											12	DREAM DRILLS for HIGH HARDENED STEELS
											13	DREAM DRILLS for HIGH HARDENED STEELS
											14	DREAM DRILLS for HIGH HARDENED STEELS
											15	GENERAL CARBIDE DRILLS
											16	GENERAL CARBIDE DRILLS
											17	GENERAL CARBIDE DRILLS
											18	GENERAL CARBIDE DRILLS
											19	GENERAL CARBIDE DRILLS
											20	GENERAL CARBIDE DRILLS
											21	GENERAL CARBIDE DRILLS
											22	GENERAL CARBIDE DRILLS
											23	GENERAL CARBIDE DRILLS
											24	GENERAL CARBIDE DRILLS
											25	GENERAL CARBIDE DRILLS
											26	GENERAL CARBIDE DRILLS
											27	GENERAL CARBIDE DRILLS
											28	GENERAL CARBIDE DRILLS
											29	GENERAL CARBIDE DRILLS
											30	GENERAL CARBIDE DRILLS
											31	GENERAL CARBIDE DRILLS
											32	GENERAL CARBIDE DRILLS
											33	GENERAL CARBIDE DRILLS
											34	GENERAL CARBIDE DRILLS
											35	GENERAL CARBIDE DRILLS
											36	GENERAL CARBIDE DRILLS
											37	GENERAL CARBIDE DRILLS
											38	GENERAL CARBIDE DRILLS
											39	GENERAL CARBIDE DRILLS
											40	GENERAL CARBIDE DRILLS
											41	GENERAL CARBIDE DRILLS

Coating	Characteristics	Coating	Characteristics
H	<ul style="list-style-type: none"> -First choice for excellent wear resistance and toughness -Preventive of chipping due to cold welding -Achieve high penetration rates even in deep holes with reliable tool life -Coefficient of friction against steel : 0.25 -Color : Bronze 	TiCN	<ul style="list-style-type: none"> -Maximum working temperature up to 400°C -Better wear resistance over non-coating -Coefficient of friction against steel : 0.4 -Color : Blue-Grey
		TiAlN	<ul style="list-style-type: none"> -Maximum working temperature up to 800°C -Excellent heat and oxidation resistance -Coefficient of friction against steel : 0.4 -Color : Violet-Grey
TiN	<ul style="list-style-type: none"> -Increased tool life over non-coating -Improved wear resistance and high hardness -For normal applications -Coefficient of friction against steel : 0.4 -Color : Gold 	Hardslick	<ul style="list-style-type: none"> -Better chip evacuation for tapping and drilling -High hardness and improved lubrication -Coefficient of friction against steel : 0.2 -Color : Black-Grey

PRODUCT FEATURES

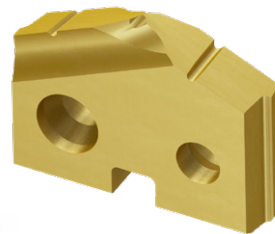
SPADE DRILLS (Standard, SM-Point)

Reference page : p.A299 - p.A380



Standard-Point

Standard Point
and Neutral Rake Angle for
Stable Cutting
Self Centering
Chip Breaking
Rigidity on Center



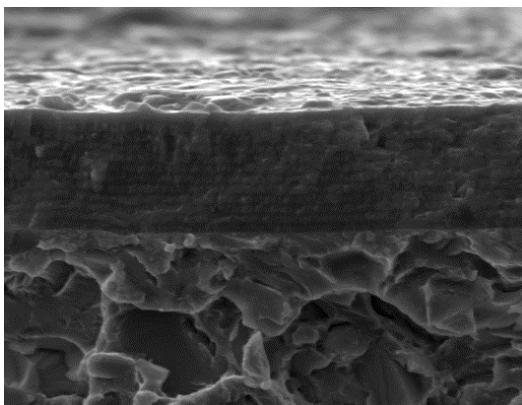
SM-Point

Multiple Web Thinning for and Radius Back Face
for Increased Cutting Speed and Feed
Wide Chip Space
Good Self-Centering
Less Tool Lead-off
Reduction in bell moutinging



Multi Layers

Carbide



Multi layered 'H'-coating Micro Grain Carbide Insert

Outstanding Productivity & Reliability

H - Coating

(Upgraded AlCrN-Based : **Multi-Layer coating**)

- Higher worn-out resistance and Lower friction
- Higher Cutting Speed and Feed
- Improved drill Hole Quality



Special features of SM-Point Spade Drill

This new "Hybrid Point" combines the strength of the standard point with additional "Web Thinning".

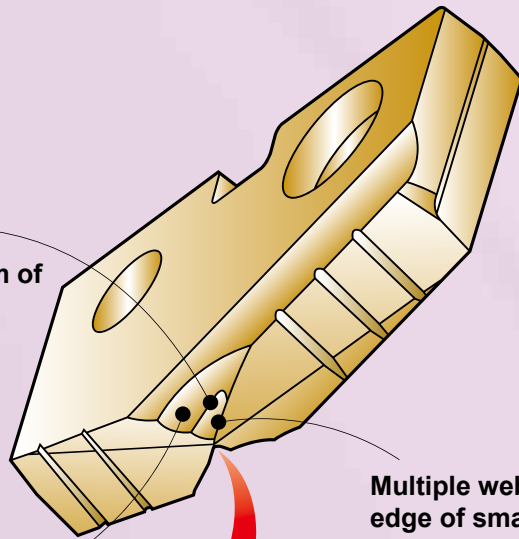
This new point increases stability, reduces thrust, improves centering and allows increased speeds and feeds.

Multiple thinning form at the bottom of the large thinning.

- ▶ The optimum thinning for the difference from the cutting speed, the cutting quantity and the cutting load according to the distance from the drill point to the cutting edge.

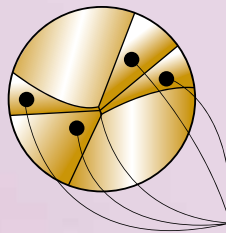
Radius back face

- ▶ Wide chip space



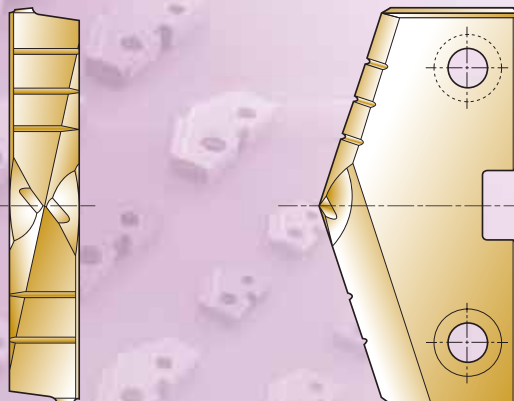
Multiple web thinning with the cutting edge of small web thinning.

- ▶ Good self-centering
- ▶ Less tool lead off
- ▶ Reduction in bell mouching, thrust
- ▶ Increased stability

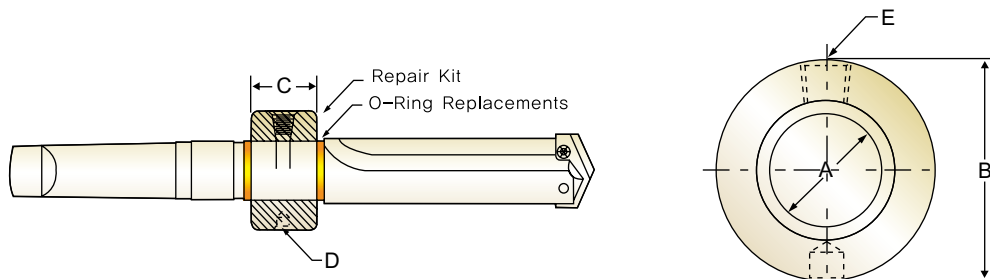


Four-facet point

- ▶ Self-centering
- ▶ Less thrust force



HOLDER ACCESSORIES
ROTARY COOLANT ADAPTER (RCA) AND ACCESSORIES



Inch

Item No.	I.D.	O.D.	Length	Thread for Driving Rod	Pipe Tap	RCA Repair Kit Item No.	RCA O-Ring Replacements Item No.
	A	B	C	D	E		
PR110048	3/4	1-3/4	7/8	5/16-NC	◆1/8	PR210048	PR310048
PR110100	1	2-1/8	1-1/8	5/16-NC	◆1/8	PR210100	PR310100
PR110116	1-1/4	2-1/2	1-3/8	3/8-NC	◆1/4	PR210116	PR310116
PR110148	1-3/4	3	1-3/8	3/8-NC	◆1/4	PR210148	PR310148
PR110216	2-1/4	3-3/4	1-3/4	1/2-NC	◆1/2	PR210216	PR310216

Metric

Item No.	I.D.	O.D.	Length	Thread for Driving Rod	Pipe Tap	RCA Repair Kit Item No.	RCA O-Ring Replacements Item No.
	A	B	C	D	E		
PR120190	19.05	44.45	22.23	M8 × 1.25	◆1/8	PR220190	PR320190
PR120254	25.40	53.97	28.57	M8 × 1.25	◆1/8	PR220254	PR320254
PR120317	31.75	63.50	34.92	M10 × 1.5	◆1/4	PR220317	PR320317
PR120444	44.45	76.20	34.92	M10 × 1.5	◆1/4	PR220444	PR320444
PR120571	57.15	95.27	44.45	M12 × 1.75	◆1/2	PR220571	PR320571

◆ Thread to BSP & ISO 7-1

TORX SCREWS

Holder Series	Item No.	TORX Hand Driver	Drill Range Used With	
			Inch	Metric
Y	J07Y0010	J05Y0070	3/8 ~ 27/64	9.5 mm ~ 11.0 mm
Z	J07Z0110		7/16 ~ 1/2	11.5 mm ~ 12.5 mm
0	J0800210	J0500080	33/64 ~ 11/16	13.0 mm ~ 17.5 mm
0.5	J0805310		39/64 ~ 11/16	15.5 mm ~ 17.5 mm
1	J0910410	J0510090	45/64 ~ 15/16	18.0 mm ~ 24.0 mm
1.5	J0915510		55/64 ~ 15/16	22.0 mm ~ 24.0 mm
2	J1520610	J0520150	31/32 ~ 1-3/8	25.0 mm ~ 35.0 mm
2.5	J1525710		1-3/16 ~ 1-3/8	30.0 mm ~ 35.0 mm
3,4	J2030810		1-13/32 ~ 2-9/16	36.0 mm ~ 65.0 mm
5 ~ 8	J2550910	J0550250	2-1/2 ~ 4-1/2	64.0 mm ~ 114.0 mm

** Note : Replacement screws sold in packages(10 screws per package)

SPADE DRILL HSS-T15

ISO	VDI 3323	Material Description	Vc(m/min)			Feed(mm/rev)						
			TiN	TiCN	TiAlN	Ø9.5-12.5	Ø13-17.5	Ø18-24	Ø25-35	Ø36-47	Ø48-65	Ø66-114
P	1	Non-alloy steel	54	67	75	0.15	0.22	0.28	0.37	0.46	0.56	0.67
	2		49	58	69	0.13	0.19	0.24	0.34	0.43	0.50	0.57
	3		45	56	63	0.13	0.19	0.23	0.34	0.43	0.50	0.58
	4		45	56	63	0.13	0.19	0.23	0.34	0.43	0.50	0.58
	6	Low alloy steel	45	56	58	0.13	0.20	0.24	0.36	0.42	0.46	0.55
	7		41	50	56	0.13	0.16	0.23	0.35	0.41	0.44	0.55
	8		39	47	53	0.09	0.15	0.22	0.28	0.38	0.41	0.50
	9		36	43	46	0.08	0.15	0.21	0.27	0.38	0.40	0.51
	10		High alloyed steel, and tool steel	25	34	36	0.08	0.17	0.20	0.24	0.30	0.37
	11	19		27	29	0.08	0.14	0.18	0.19	0.25	0.29	0.34
	M	12	Stainless steel	20	23	29	0.12	0.18	0.20	0.24	0.30	0.36
13		20		23	29	0.12	0.18	0.20	0.24	0.30	0.36	0.46
14		24		29	34	0.14	0.20	0.23	0.26	0.36	0.41	0.50
K	15	Grey cast iron	48	58	70	0.14	0.26	0.35	0.45	0.56	0.64	0.68
	16		29	35	41	0.10	0.15	0.16	0.23	0.28	0.35	0.40
	17	Nodular cast iron	48	58	70	0.14	0.26	0.35	0.45	0.56	0.64	0.68
	18		35	44	52	0.13	0.17	0.23	0.30	0.35	0.43	0.50
	19		52	64	75	0.16	0.30	0.40	0.49	0.59	0.69	0.75
20	Malleable cast iron	35	44	52	0.13	0.17	0.23	0.30	0.35	0.43	0.50	
N	21	Aluminum-wrought alloy	187	229	244	0.19	0.33	0.41	0.50	0.54	0.64	0.70
	22		92	137	137	0.19	0.33	0.41	0.46	0.54	0.64	0.70
	27	Copper and Copper Alloys (Bronze / Brass)	95	128	142	0.19	0.31	0.43	0.53	0.64	0.74	0.79
S	31	Heat Resistant Super Alloys	9	11	12	0.08	0.17	0.20	0.24	0.30	0.37	0.39
	32		8	9	11	0.08	0.14	0.18	0.19	0.25	0.29	0.34
	33		8	9	11	0.08	0.14	0.18	0.19	0.25	0.29	0.34
	34		8	9	11	0.08	0.14	0.18	0.19	0.25	0.29	0.34
	35		8	9	11	0.08	0.14	0.18	0.19	0.25	0.29	0.34
H	38	Hardened steel	20	23	29	0.12	0.18	0.20	0.24	0.30	0.36	0.46

- The recommendations for speeds, feeds and other parameters presented in this chart are nominal recommendations and should be considered only as good starting points.
 Speed and feed reductions (20% reduction in speed and 10% reduction in feed) are recommended.