



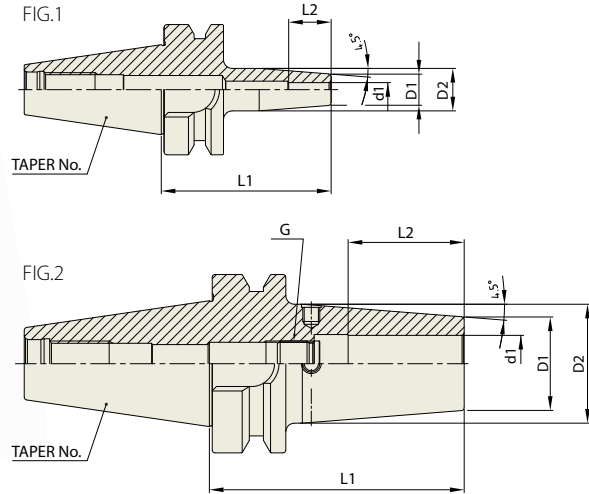
# SHRINK FIT HOLDER

SFH

## SHRINK FIT HOLDER

SCHRUMPFUTTER  
MANDRIN DE FRETTAGE  
MADRINI PER CALLETAMENTO A CALDO  
PORTAHERRAMIENTAS DE COMPRESION POR CALOR

CBT  
(BT DUAL CONTACT)



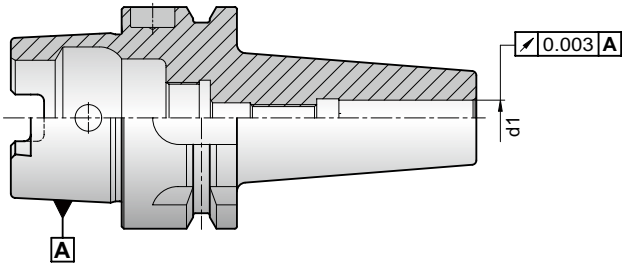
Unit : mm

TAPER No.	MODEL No.	EDP No.	d1	D1	D2	L	L2	G	FIG.	WEIGHT (kg)
30	CBT30-SFH3-60	P2771505	3	11	15	60	10	-	1	0.40
	CBT30-SFH4-60	P2771506	4	11	15	60	12	-	1	0.40
	CBT30-SFH5-60	P2771507	5	11	15	60	15	-	1	0.40
	CBT30-SFH6-60	P2771508	6	21	27	60	36	M5×0.8	2	0.40
	CBT30-SFH8-60	P2771509	8	21	27	60	36	M6×1.0	2	0.40
	CBT30-SFH10-80	P2771510	10	24	32	80	41	M8×1.0	2	0.40
	CBT30-SFH12-80	P2771511	12	24	32	80	48	M10×1.0	2	0.42
	CBT30-SFH14-80	P2771512	14	27	34	80	48	M10×1.0	2	
	CBT30-SFH16-80	P2771513	16	27	34	80	51	M12×1.0	2	0.42
	CBT30-SFH18-80	P2771514	18	27	34	80	51	M12×1.0	2	
40	CBT30-SFH20-90	P2771515	20	33	42	90	53	M16×1.0	2	0.44
	CBT40-SFH3-90	P2771516	3	11	15	90	10	-	1	1.00
	CBT40-SFH4-90	P2771517	4	11	15	90	12	-	1	1.00
	CBT40-SFH5-90	P2771518	5	11	15	90	23	-	1	1.00
	CBT40-SFH6-90	P2771519	6	21	27	90	36	M5×0.8	2	1.10
	CBT40-SFH6-160	P2771520	6	21	27	160	36	M5×0.8	2	1.15
	CBT40-SFH8-90	P2771501	8	21	27	90	36	M6×1.0	2	1.11
	CBT40-SFH8-160	P2771521	8	21	27	160	36	M6×1.0	2	1.15
	CBT40-SFH10-90	P2771502	10	24	32	90	41	M8×1.0	2	1.10
	CBT40-SFH10-160	P2771522	10	24	32	160	41	M8×1.0	2	1.15
	CBT40-SFH12-90	P2771503	12	24	32	90	47	M10×1.0	2	1.10
	CBT40-SFH12-160	P2771523	12	24	32	160	47	M10×1.0	2	1.15
	CBT40-SFH14-90	P2771524	14	27	34	90	47	M10×1.0	2	1.20
	CBT40-SFH14-160	P2771525	14	27	34	160	47	M10×1.0	2	1.50
	CBT40-SFH16-90	P2771526	16	27	34	90	50	M12×1.0	2	1.20
	CBT40-SFH16-160	P2771527	16	27	34	160	50	M12×1.0	2	1.50
	CBT40-SFH18-90	P2771528	18	33	42	90	50	M12×1.0	2	1.30
	CBT40-SFH18-160	P2771529	18	33	42	160	50	M12×1.0	2	1.60
	CBT40-SFH20-90	P2771504	20	33	42	90	52	M16×1.0	2	1.40
	CBT40-SFH20-160	P2771530	20	33	42	160	52	M16×1.0	2	1.70
	CBT40-SFH25-100	P2771531	25	44	53	100	58	M16×1.0	2	1.70
	CBT40-SFH25-160	P2771532	25	44	53	160	58	M16×1.0	2	2.00

▶ Without balancing screw.

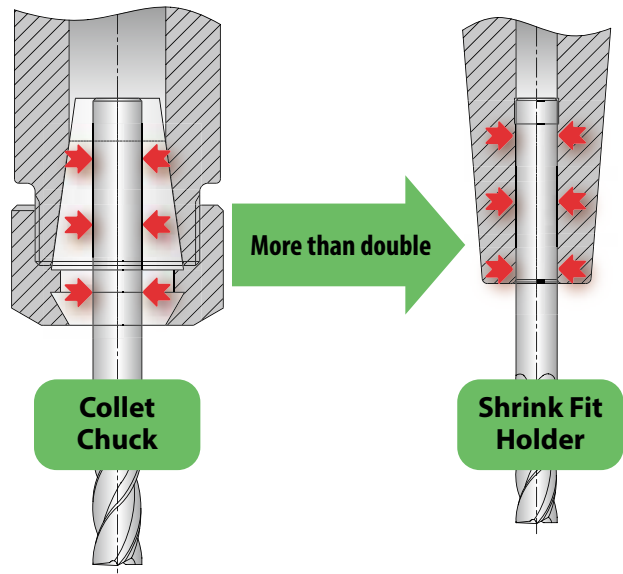
## SHRINK FIT HOLDER

### High Precision I.D Run-out : $\leq 0.003\text{mm}$



- Less than 0.003mm of Tool Holder accuracy at I.D

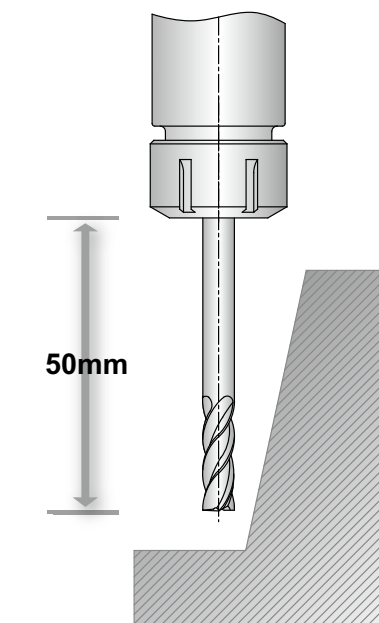
### Strong and Consistent Torque Power



- Achieving strong torque power by integration of chuck and tool

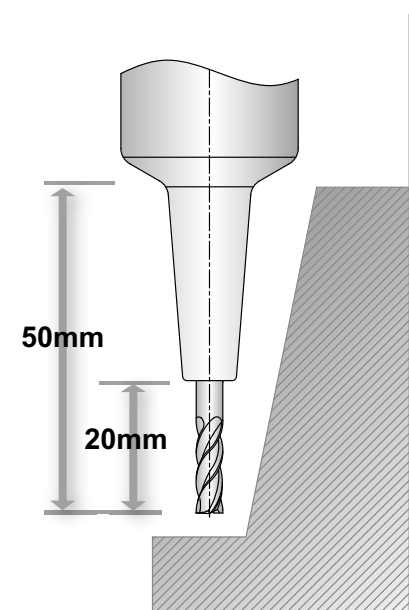
### Deep hole Machining

Collet Chuck

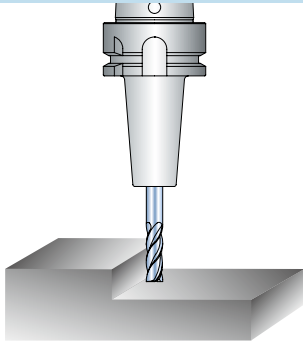
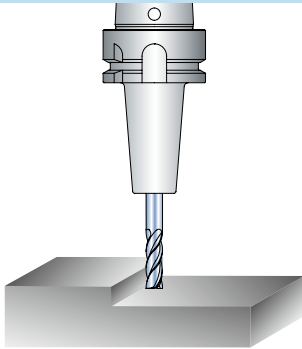
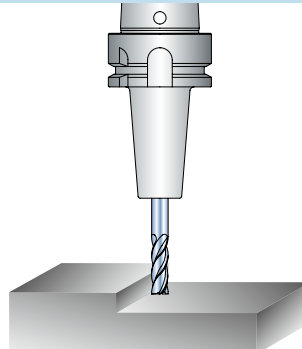
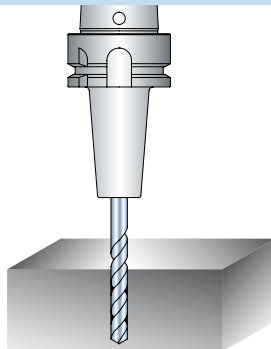
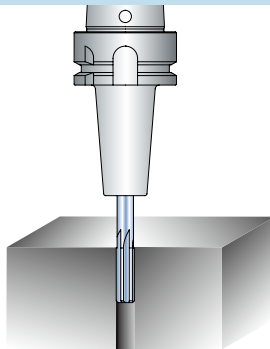
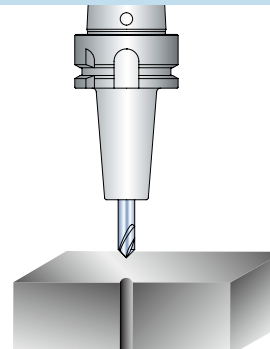


Shrink Fit Holder

More favorable in deep hole machining



- Suitable for High-Speed precision deep hole machining

APPLICATION		
<b>Rough Milling</b> 	<b>Finish Milling</b> 	<b>High-Speed Cutting</b> 
<b>Drilling</b> 	<b>Reaming</b> 	<b>Countersinking</b> 

### Shank Type of Cutting Tool

Straight shank



One weldon flat shaft type



• One Weldon flat shaft type tool is usable, but there is a possibility that the I.D of shrink fit holder may be deformed.

### Material of Cutting Tool

CARBIDE  
TOOL

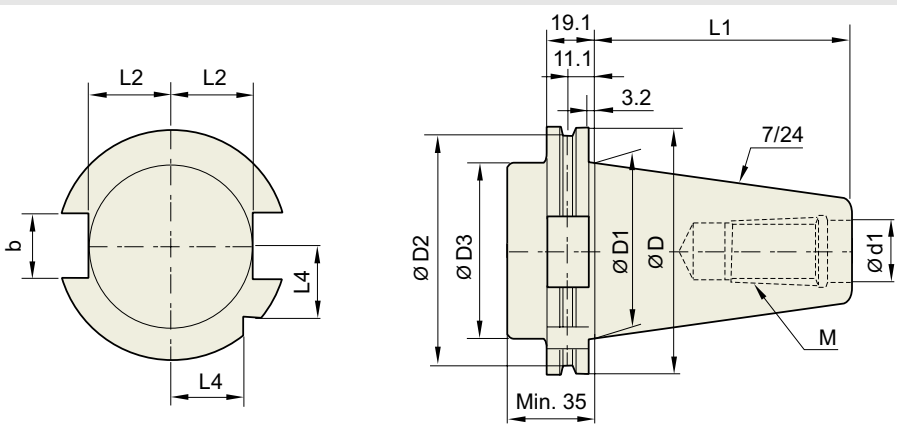
HSS  
TOOL

OK

NO

**TECHNICAL DATA : SHANK STANDARD**

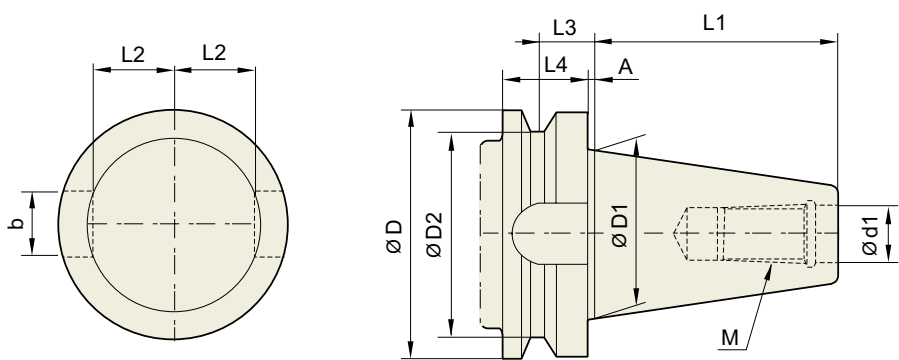
**DIN 69871-SK**



Unit : mm

TAPER No.	ØD	ØD1	ØD2	ØD3	Ød1	L1	L2	L3	L4	b	M
SK30	50	31.75	44.3	45	13	47.8	16.4	19	15	16.1	M12×1.75
SK40	63.55	44.45	56.25	50	17	68.4	22.8	25	18.5	16.1	M16×2.0
SK50	97.5	69.85	91.25	80	25	101.75	35.5	37.7	30	25.7	M24×3.0

**JIS B6339/ MAS 403-BT**

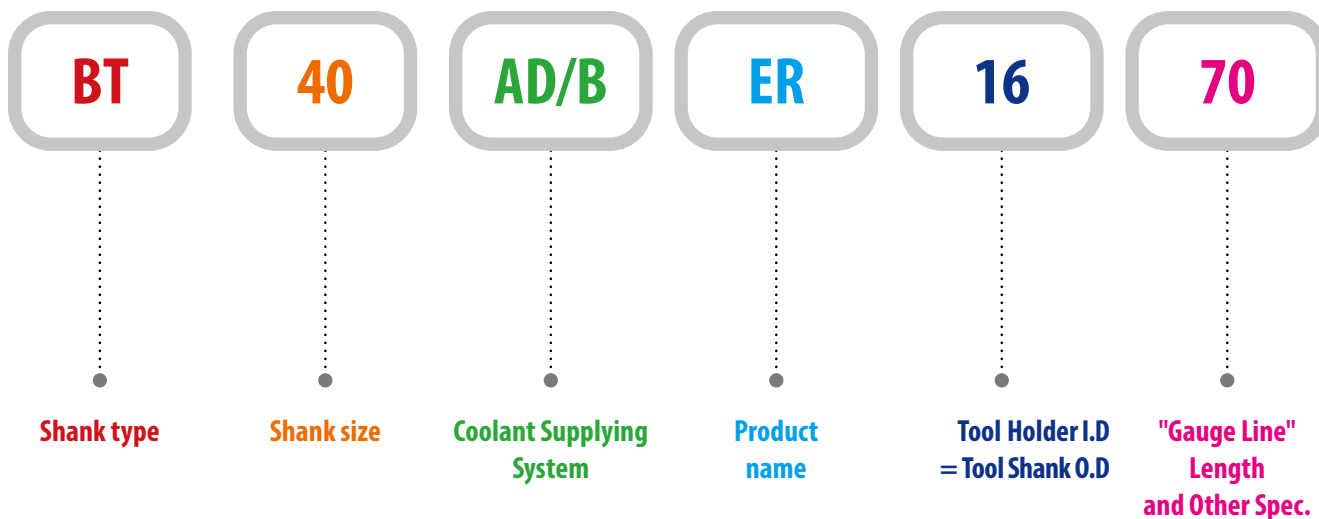


Unit : mm

TAPER No.	ØD	ØD1	ØD2	Ød13.	L1	L2	L3	L4	A	b	M
BT30	46	31.75	38	12.5	48.4	16.3	13.6	20	2	16.1	M12×1.75
BT40	63	44.45	53	17	65.4	22.6	16.6	25	2	16.1	M16×2
BT50	100	69.85	85	25	101.8	35.4	23.2	35	3	25.7	M24×3
BT60	155	107.95	135	31	161.8	60.1	28.2	45	3	25.7	M30×3.5

# MODEL NUMBERING SYSTEM & SURFACE FINISH

## Model Numbering System



## Surface Finish

