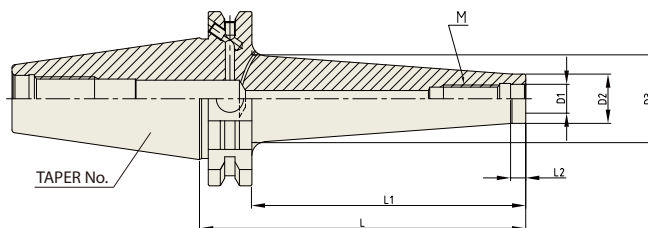




**COPY MILL ARBOR**

**DIN 69871-SK**

WERKZEUGAUFNAHME FÜR EINSCHRAUBFRÄSER MIT GEWINDE  
 MANDRIN POUR FRAISES À QUEUE FILETÉE AVEC FILETAGE  
 MANDRINO PER FRESE MODULARI FILETTATE  
 PORTAHERRAMIENTAS PARA FRESAS DE ENROSCAR CON ROSCA

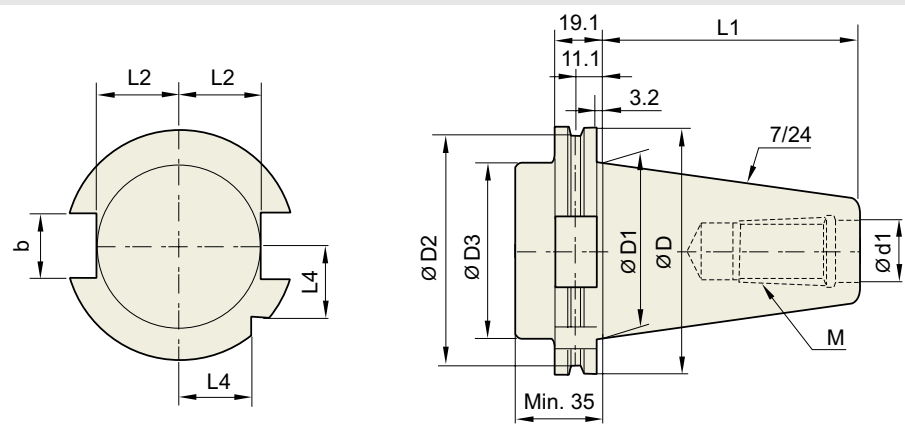


Unit : mm

TAPER No.	MODEL No. (M-L1)	EDP No.	D1	D2	D3	L	L1	L2	WEIGHT (kg)
40	SK40AD/B-M6-25	P2801701	6.5	10	13	44	25	5	0.80
	SK40AD/B-M8-25	P2801702	8.5	13	15	44	25	5	0.80
	SK40AD/B-M8-50	P2801703	8.5	13	23	69	50	5	0.86
	SK40AD/B-M8-75	P2801704	8.5	13	23	94	75	5	0.90
	SK40AD/B-M8-100	P2801705	8.5	13	25	119	100	5	0.97
	SK40AD/B-M10-5	P2801706	10.5	18	18	24	5	5	0.77
	SK40AD/B-M10-25	P2801707	10.5	18	20	44	25	5	0.79
	SK40AD/B-M10-50	P2801708	10.5	18	23	69	50	5	0.85
	SK40AD/B-M10-75	P2801709	10.5	18	28	94	75	5	0.87
	SK40AD/B-M10-100	P2801710	10.5	18	32	119	100	5	1.12
	SK40AD/B-M10-150	P2801711	10.5	18	36.5	169	150	5	1.38
	SK40AD/B-M12-5	P2801712	12.5	21	21	24	5	5	0.77
	SK40AD/B-M12-25	P2801713	12.5	21	24	44	25	5	0.82
	SK40AD/B-M12-50	P2801714	12.5	21	24	69	50	5	0.85
	SK40AD/B-M12-75	P2801715	12.5	21	31	94	75	5	1.02
	SK40AD/B-M12-100	P2801716	12.5	21	33	119	100	5	1.09
	SK40AD/B-M12-150	P2801717	12.5	21	40	169	150	5	1.53
	50	SK40AD/B-M16-5	P2801718	17	29	29	24	5	5
SK40AD/B-M16-25		P2801719	17	29	29	44	25	5	0.85
SK40AD/B-M16-50		P2801720	17	29	34	69	50	5	1.00
SK40AD/B-M16-75		P2801721	17	29	34	94	75	5	0.99
SK40AD/B-M16-100		P2801722	17	29	36	119	100	5	1.34
SK40AD/B-M16-150		P2801723	17	29	42.5	169	150	5	1.84
SK50AD/B-M8-50		P2801724	8.5	13	23	69	50	5	2.69
SK50AD/B-M10-50		P2801725	10.5	18	23	69	50	5	2.71
SK50AD/B-M10-100		P2801726	10.5	18	32	119	100	10	2.88
SK50AD/B-M10-150		P2801727	10.5	18	36.5	169	150	10	3.17
SK50AD/B-M12-50		P2801728	12.5	21	24	69	50	5	2.67
SK50AD/B-M12-100		P2801729	12.5	21	33	119	100	10	2.93
SK50AD/B-M12-150		P2801730	12.5	21	40	169	150	10	3.33
SK50AD/B-M16-50		P2801731	17	29	34	69	50	5	2.79
SK50AD/B-M16-100		P2801732	17	29	36	119	100	10	3.00
SK50AD/B-M16-150	P2801733	17	29	42.5	169	150	10	3.60	

**TECHNICAL DATA : SHANK STANDARD**

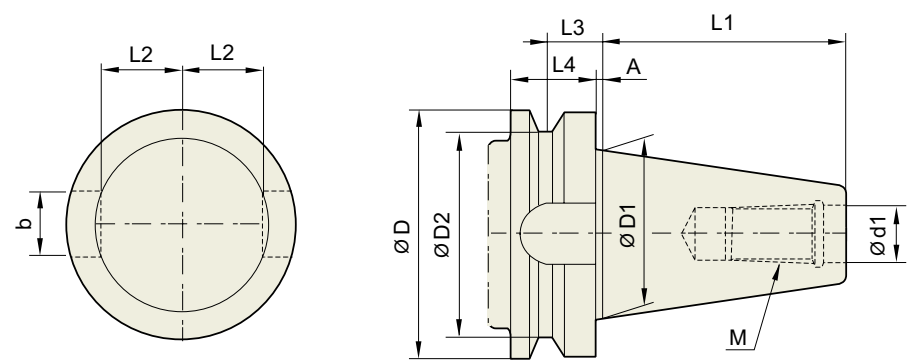
**DIN 69871-SK**



Unit : mm

TAPER No.	ØD	ØD1	ØD2	ØD3	Ød1	L1	L2	L3	L4	b	M
<b>SK30</b>	50	31.75	44.3	45	13	47.8	16.4	19	15	16.1	M12×1.75
<b>SK40</b>	63.55	44.45	56.25	50	17	68.4	22.8	25	18.5	16.1	M16×2.0
<b>SK50</b>	97.5	69.85	91.25	80	25	101.75	35.5	37.7	30	25.7	M24×3.0

**JIS B6339/ MAS 403-BT**

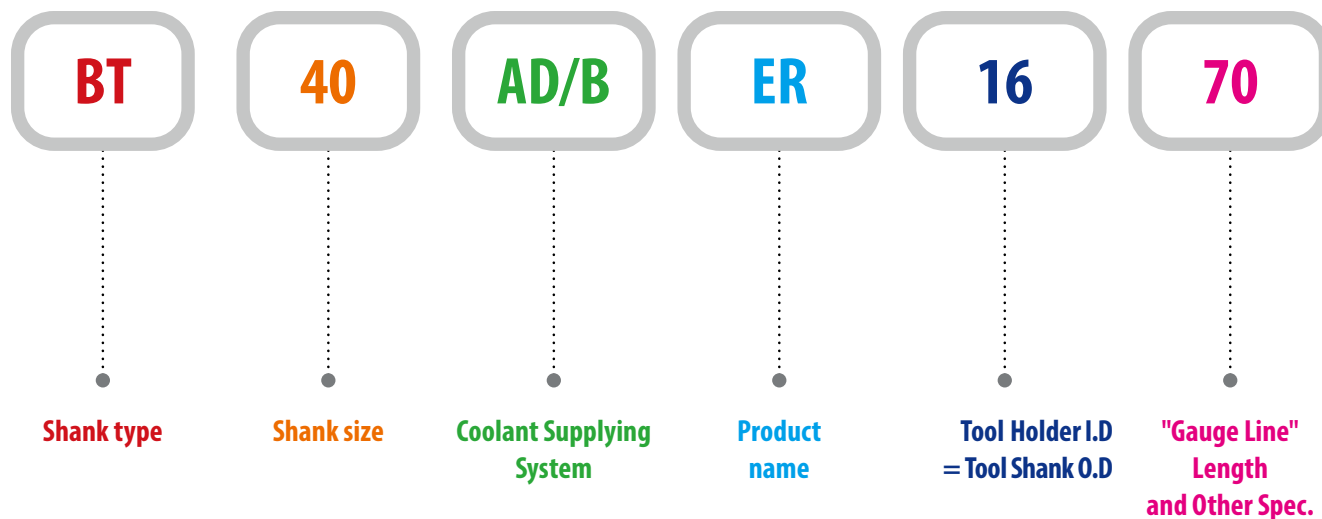


Unit : mm

TAPER No.	ØD	ØD1	ØD2	Ød13.	L1	L2	L3	L4	A	b	M
<b>BT30</b>	46	31.75	38	12.5	48.4	16.3	13.6	20	2	16.1	M12×1.75
<b>BT40</b>	63	44.45	53	17	65.4	22.6	16.6	25	2	16.1	M16×2
<b>BT50</b>	100	69.85	85	25	101.8	35.4	23.2	35	3	25.7	M24×3
<b>BT60</b>	155	107.95	135	31	161.8	60.1	28.2	45	3	25.7	M30×3.5

# MODEL NUMBERING SYSTEM & SURFACE FINISH

## Model Numbering System



## Surface Finish

