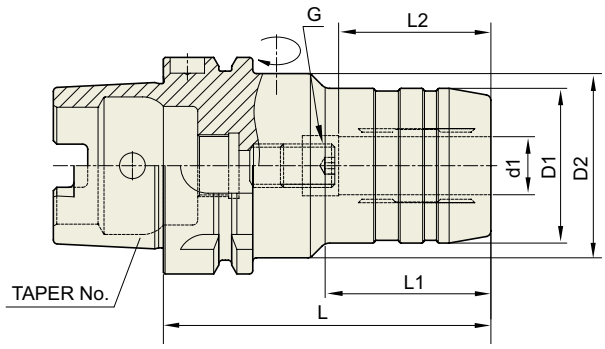


**HYDRAULIC CHUCK (SLIM)**

**DIN 69893/  
ISO 12164-1-HSK FORM A**

HYDRAULIK SPANNFUTTER (SCHLANK)  
MANDRIN HYDRAULIQUE (MINCE)  
MANDRINI IDRAULICI (SOTTILE)  
PORTAHERRAMIENTAS HIDRAULICO (DELGADO)



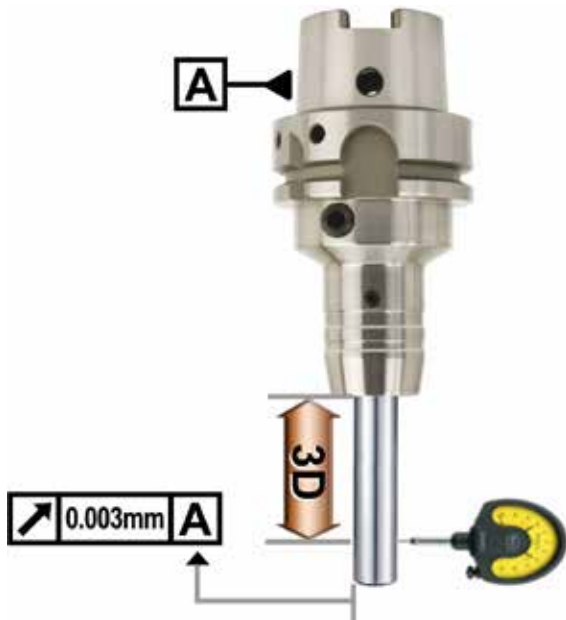
Collet  
Refer to page 43-46

Unit : mm

TAPER No.	MODEL No.	EDP No.	d1	D1	D2	L	L1	L2	G	WEIGHT (kg)
32A	HSK32A-HC6-80	P2770413	6	26	40	80	29	27	M5×0.8	0.30
	HSK32A-HC8-80	P2770414	8	28	40	80	29	27	M6×1.0	0.30
	HSK32A-HC10-85	P2770415	10	30	40	85	35	32	M6×1.0	0.30
	HSK32A-HC12-90	P2770416	12	32	40	90	40	37	M6×1.0	0.30
40A	HSK40A-HC6-70	P2770401	6	26	34	70	36	27	M5×0.8	0.50
	HSK40A-HC8-70	P2770402	8	28	34	70	36	27	M6×1.0	0.50
	HSK40A-HC10-75	P2770403	10	30	34	75	42	32	M6×1.0	0.60
	HSK40A-HC12-80	P2770417	12	32	34	80	48	37	M6×1.0	0.65
50A	HSK50A-HC6-70	P2770404	6	26	40	70	28	27	M5×0.8	0.65
	HSK50A-HC8-70	P2770405	8	28	40	70	28	27	M6×1.0	0.65
	HSK50A-HC10-75	P2770406	10	30	40	75	34	32	M8×1.0	0.70
	HSK50A-HC12-85	P2770407	12	32	40	85	44	37	M10×1.0	0.75
	HSK50A-HC14-85	P2770408	14	34	40	85	43	37	M10×1.0	0.75
	HSK50A-HC16-90	P2770409	16	38	53	90	30	42	M12×1.0	0.90
	HSK50A-HC18-90	P2770418	18	40	57	90	30	42	M12×1.0	0.90
63A	HSK50A-HC20-90	P2770419	20	42	60	90	29	42	M16×1.0	1.00
	HSK63A-HC6-70	P2567001	6	26	50	70	24	27	M5×0.8	0.53
	HSK63A-HC8-70	P2567002	8	28	50	70	25	27	M6×1.0	0.55
	HSK63A-HC10-80	P2567003	10	30	50	80	35	32	M8×1.0	1.00
	HSK63A-HC12-85	P2567004	12	32	50	85	40	37	M10×1.0	1.03
	HSK63A-HC14-85	P2567005	14	34	50	85	40	37	M10×1.0	1.05
	HSK63A-HC16-90	P2567006	16	38	50	90	46	42	M12×1.0	1.15
	HSK63A-HC18-90	P2567007	18	40	50	90	47	42	M12×1.0	1.15
	HSK63A-HC20-90	P2567008	20	42	50	90	48	42	M16×1.0	1.20
	HSK63A-HC25-120	P2567009	25	57	63	120	59	48	M16×1.0	2.20
80A	HSK63A-HC32-125	P2567010	32	64	75	125	63	55	M16×1.0	2.40
	HSK80A-HC12-85	P2770462	12	32	50	85	40	37	M10×1.0	1.60
	HSK80A-HC20-95	P2770463	20	42	50	95	52	42	M16×1.0	1.80
	HSK80A-HC32-125	P2770464	32	64	75	125	63	55	M16×1.0	3.30
100A	HSK100A-HC6-75	P2770420	6	26	50	75	26	27	M5×0.8	3.20
	HSK100A-HC8-75	P2770421	8	28	50	75	26	27	M6×1.0	3.20
	HSK100A-HC10-90	P2770422	10	30	50	90	42	32	M8×1.0	3.40
	HSK100A-HC12-95	P2770410	12	32	50	95	47	37	M10×1.0	3.40
	HSK100A-HC14-95	P2770423	14	34	50	95	47	37	M10×1.0	3.40
	HSK100A-HC16-100	P2770411	16	38	50	100	53	42	M12×1.0	3.50
	HSK100A-HC18-100	P2770424	18	40	50	100	53	42	M12×1.0	3.60
	HSK100A-HC20-105	P2757010	20	42	50	105	59	42	M16×1.0	4.00
	HSK100A-HC25-110	P2770412	25	57	63	110	62	48	M16×1.0	4.20
HSK100A-HC32-110	P2757020	32	64	75	110	62	55	M16×1.0	4.30	

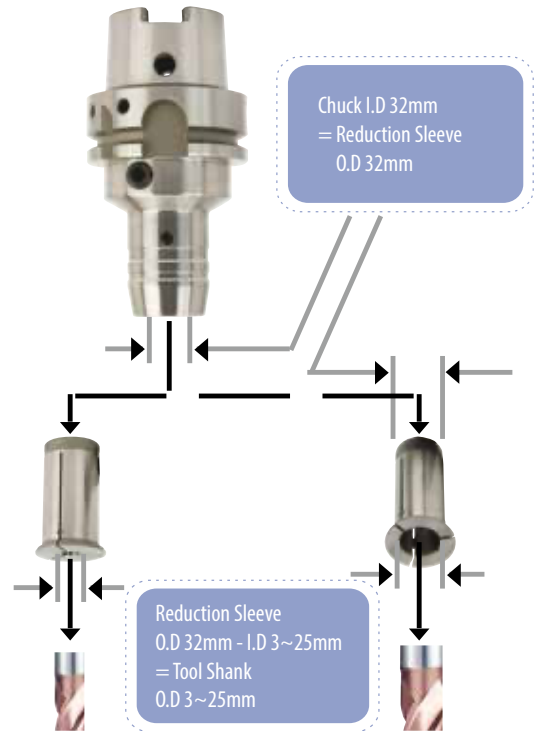
## HYDRAULIC CHUCK

- High precision T.I.R:**  
 $\leq 0.003\text{mm}$  (Without Reduction Sleeve)

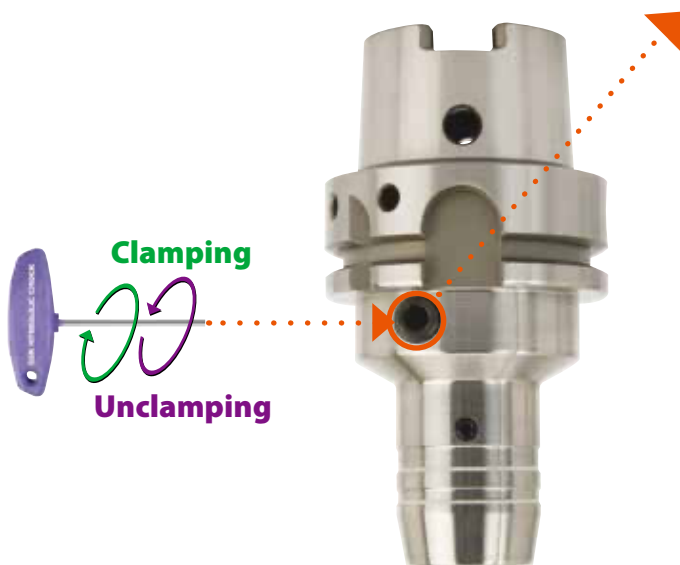


- Less than 0.003mm T.I.R =>  
 Suitable for High-Speed precision machining

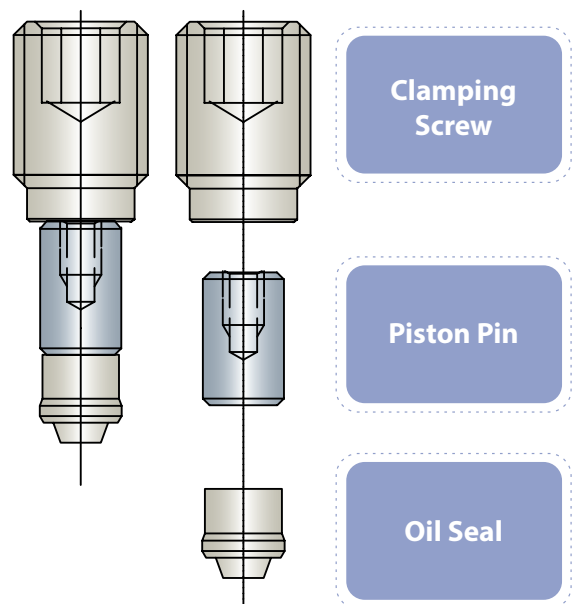
- Flexible use of cutting tools by using of reduction sleeves**



- Easy Tool Change**



### CLAMPING SCREW



- Easy clamping and unclamping by use of T wrench =>  
 Reducing tool change time

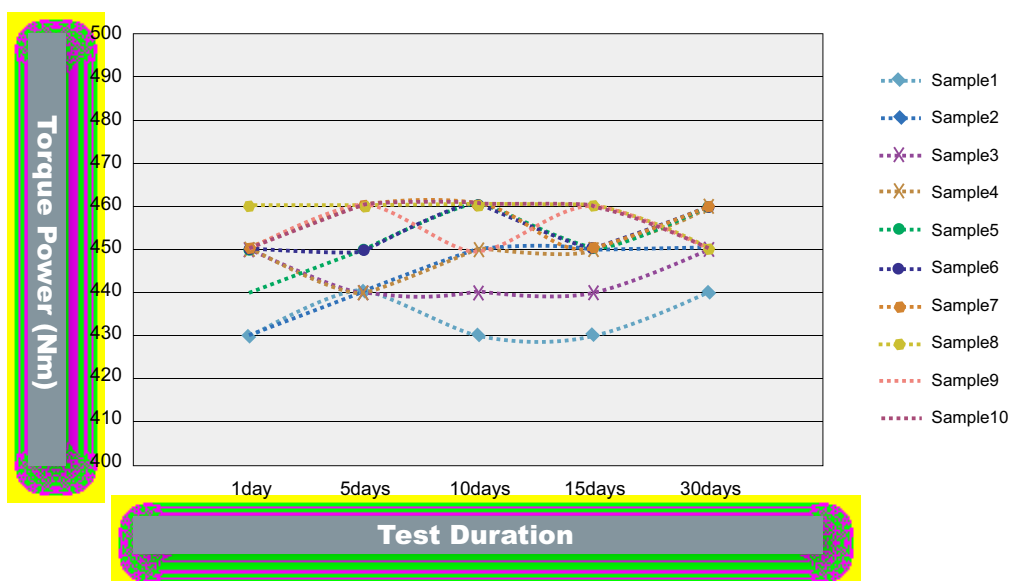
### Strong Torque Power

Hydraulic Chuck I.D(mm)	Tool Shank O.D(mm)	Applicable RPM	Minimum Clamping Depth (mm)		Min. Torque Power (Nm)	
			Slim	Power E Hydro	Slim	Power E Hydro
6	6	40,000	27		16	
8	8	40,000	27		23	
10	10	40,000	32		45	
12	12	40,000	27	41	90	110
14	14	40,000	37		110	
16	16	40,000	42		185	
18	18	40,000	42		240	
20	20	40,000	42	48	330	520
25	25	25,000	48		400	
32	32	25,000	55	57	650	900

- Tool Holder I.D Tolerance : H6
- Operating Temperature : 20~25°C
- Maximum pressure of coolant oil : 80bar



### Test of Torque Power and Hydraulic Oil Leakage



- Test Model : BT40AD/B-HC20-90
- No oil leakage for long period ⇒ Maintaining stable torque power

## HYDRAULIC CHUCK

### Radial tool length pre-setting type

- Easy to adjust pre-setting length of cutting tool  
(Saving time to pre-set cutting tool to one fifth compared with conventional Hydraulic Chuck)
- Precise adjustment of cutting tool length
- Designed to separate tool length adjustment screw from clamping screw



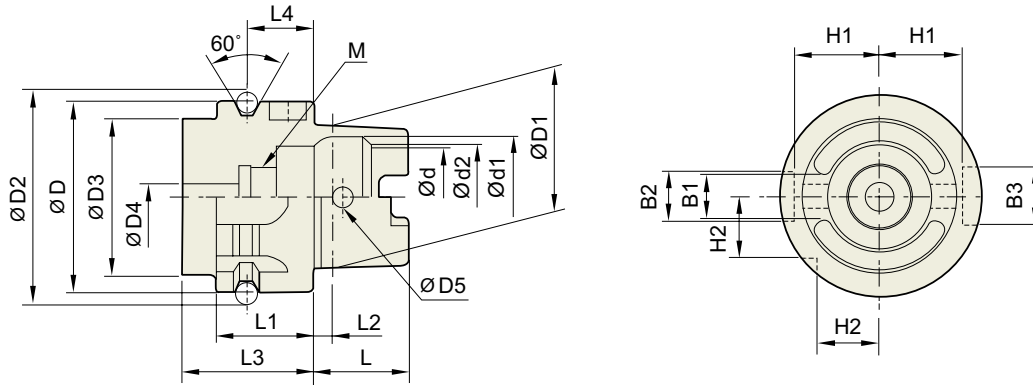
Adjustable range of cutting tool length : 0~10mm

APPLICATION		
<p><b>Milling</b></p>	<p><b>High-Speed Cutting</b></p>	<p><b>Fine Drilling</b></p>
<p><b>Reaming</b></p>	<p><b>Tapping &amp; Thread Milling</b></p>	<p><b>Chamfering</b></p>



**TECHNICAL DATA : SHANK STANDARD**

**DIN 69893/  
ISO12164-1-HSK**



Unit : mm

TAPER No.	ØD	ØD1	ØD2	ØD3	ØD4	ØD5	L	L1	L2	L3	L4
HSK32A	32	24	37.00	26	4.2	4.0	16	20	3.2	35	16
HSK40A	40	30	45.00	34	5.0	4.6	20	20	4.0	35	16
HSK50A	50	38	59.30	42	6.8	6.0	25	26	5.0	42	18
HSK63A	63	48	72.30	53	8.4	7.5	32	26	6.3	42	18
HSK80A	80	60	88.8	68	10.2	8.5	40	26	8	42	18
HSK100A	100	75	109.75	85	12.0	12.0	50	29	10.0	45	20

Unit : mm

TAPER No.	Ød	Ød1	Ød2	B1	B2	B3	H1	H2	L4
HSK32A	17	20.5	19	7.05	7	9	13.0	9.5	M10×1.0
HSK40A	21	25.5	23	8.05	9	11	17.0	12.0	M12×1.0
HSK50A	26	32.0	29	10.54	12	14	21.0	15.5	M16×1.0
HSK63A	34	40.0	37	12.54	16	18	26.5	20.0	M18×1.0
HSK80A	42	50	46	16.04	18	20	34	25	M20×1.5
HSK100A	53	63.0	58	20.02	20	22	44.0	31.5	M24×1.5

HYDRAULIC  
CHUCK

SHRINK FIT  
HOLDER

ER COLLET  
CHUCK

END MILL  
HOLDER &  
SIDE LOCK  
ARBOR

SHELL MILL  
ARBOR

POWER  
MILLING  
CHUCK

MORSE  
TAPER  
ARBOR

SK SLIM  
CHUCK

SYNCHRO  
TAPPING  
CHUCK

ONE STEP  
TAPPING  
CHUCK

TAPPING  
ER CHUCK

TAPPING  
CHUCK

FACE MILL  
ARBOR

COPY MILL  
ARBOR &  
INDEXABLE  
DRILL HOLDER

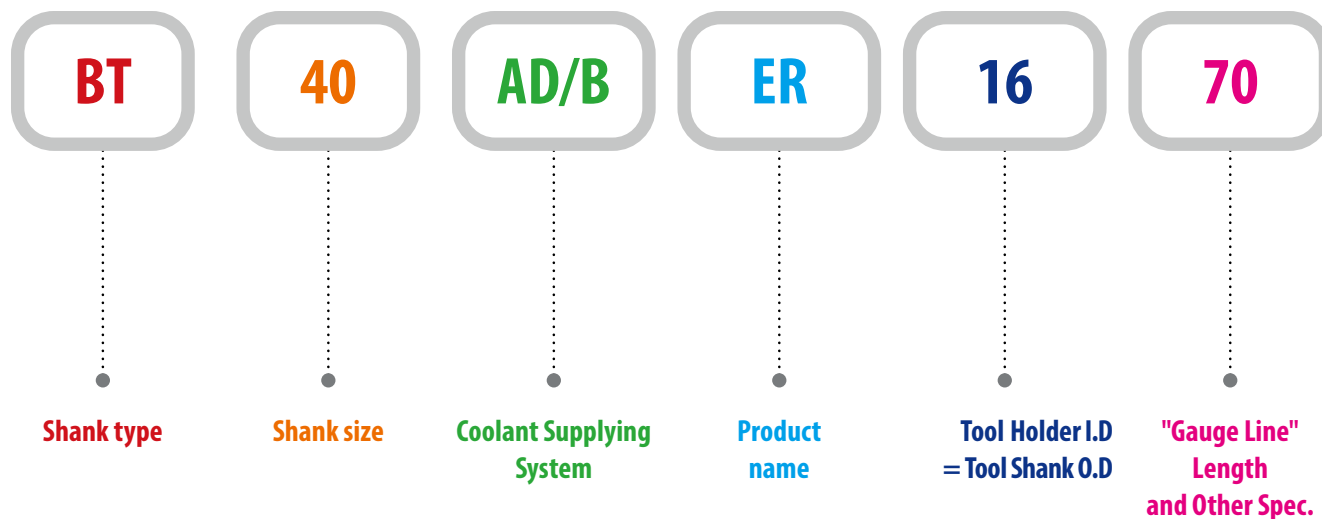
NC DRILL  
CHUCK &  
OTHER TOOL  
HOLDERS

BORING  
SYSTEM

ACCESSORY  
& OTHERS

# MODEL NUMBERING SYSTEM & SURFACE FINISH

## Model Numbering System



## Surface Finish

