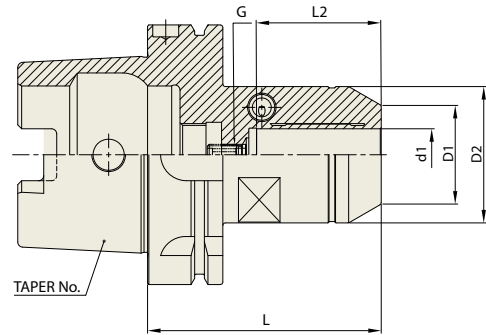


HYDRAULIC CHUCK (POWER E HYDRO)

DIN 69893/ ISO 12164-1-HSK FORM A

HYDRAULIK SPANNFUTTER (POWER E HYDRO)
 MANDRIN HYDRAULIQUE (POWER E HYDRO)
 MANDRINI IDRAULICI (POWER E HYDRO)
 PORTAHERRAMIENTAS HIDRAULICO (POWER E HYDRO)



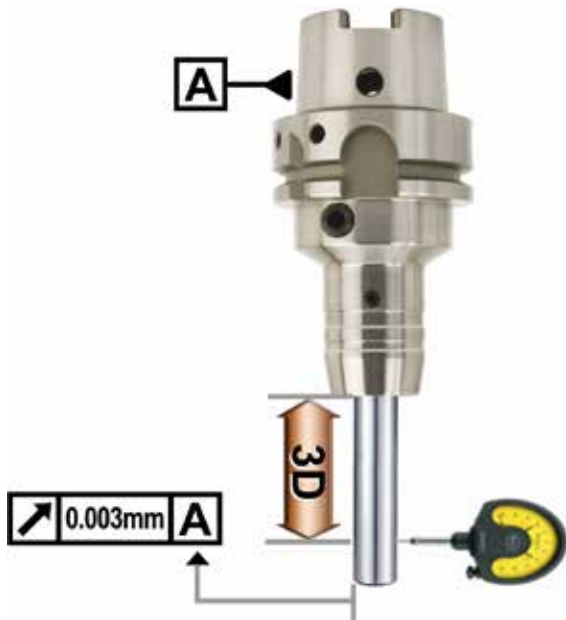
Collet
Refer to page 43-46

Unit : mm

TAPER No.	MODEL No.	EDP No.	d1	D1	D2	L	L2	G	WEIGHT (kg)
63A	HSK63A-HC12P-80	P2770302P	12	32	42	80	41	M8x1.0	1.20
	HSK63A-HC20P-80	P2770301P	20	38	52.5	80	48	M8x1.0	1.30
100A	HSK100A-HC20P-90	P2770303P	20	38	52.5	90	48	M8x1.0	2.80
	HSK100A-HC32P-100	P2770304P	32	58.5	72	100	57	M8x1.0	3.70

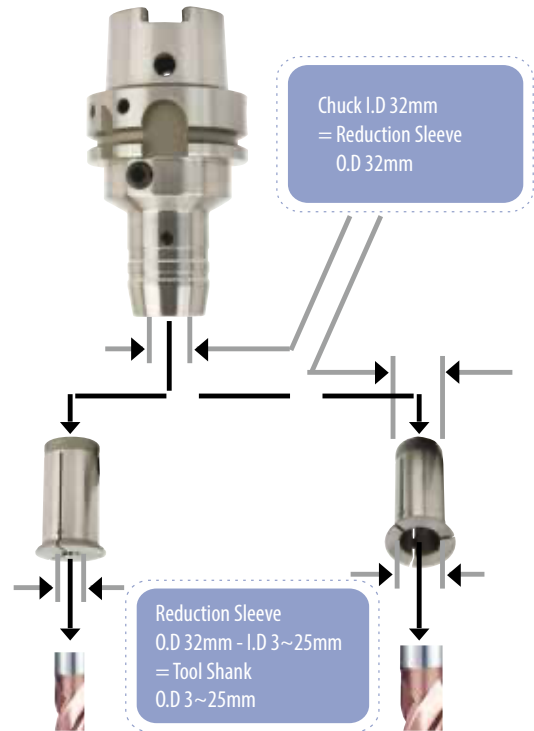
HYDRAULIC CHUCK

- High precision T.I.R:**
 $\leq 0.003\text{mm}$ (Without Reduction Sleeve)

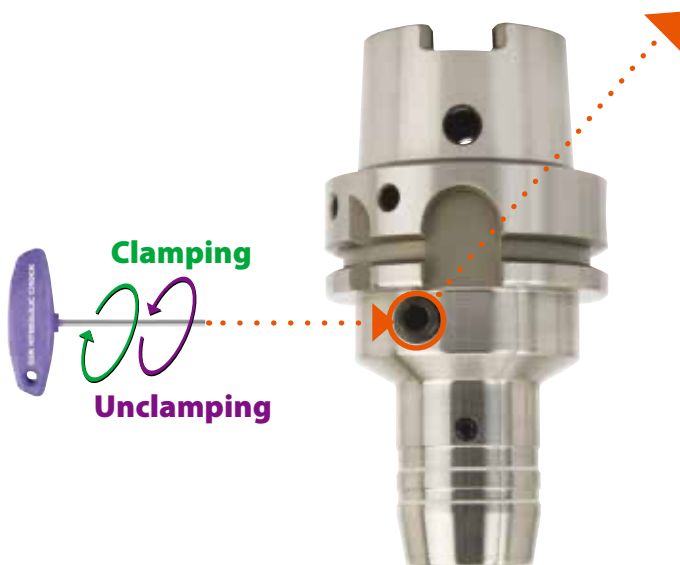


- Less than 0.003mm T.I.R =>
 Suitable for High-Speed precision machining

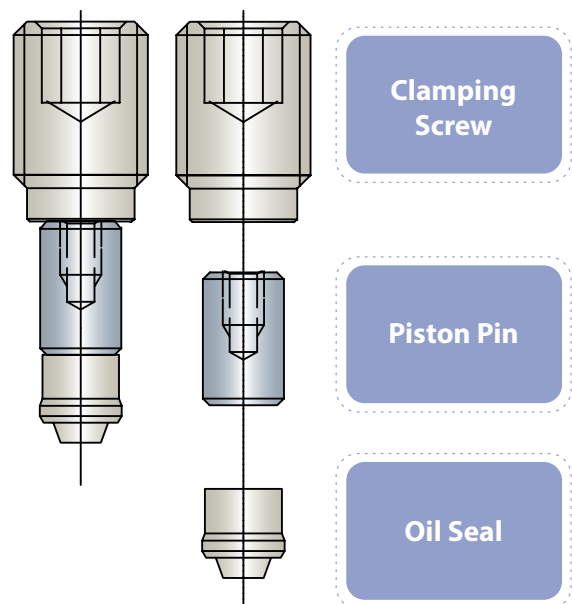
- Flexible use of cutting tools by using of reduction sleeves**



- Easy Tool Change**



CLAMPING SCREW



- Easy clamping and unclamping by use of T wrench =>
 Reducing tool change time

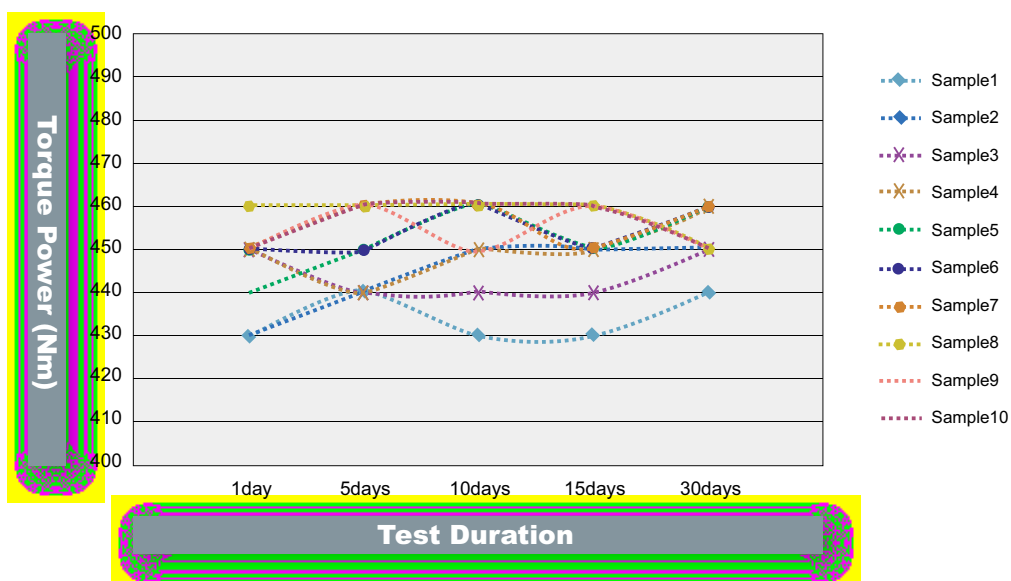
Strong Torque Power

Hydraulic Chuck I.D(mm)	Tool Shank O.D(mm)	Applicable RPM	Minimum Clamping Depth (mm)		Min. Torque Power (Nm)	
			Slim	Power E Hydro	Slim	Power E Hydro
6	6	40,000	27		16	
8	8	40,000	27		23	
10	10	40,000	32		45	
12	12	40,000	27	41	90	110
14	14	40,000	37		110	
16	16	40,000	42		185	
18	18	40,000	42		240	
20	20	40,000	42	48	330	520
25	25	25,000	48		400	
32	32	25,000	55	57	650	900

- Tool Holder I.D Tolerance : H6
- Operating Temperature : 20~25°C
- Maximum pressure of coolant oil : 80bar



Test of Torque Power and Hydraulic Oil Leakage



- Test Model : BT40AD/B-HC20-90
- No oil leakage for long period ⇒ Maintaining stable torque power

HYDRAULIC CHUCK

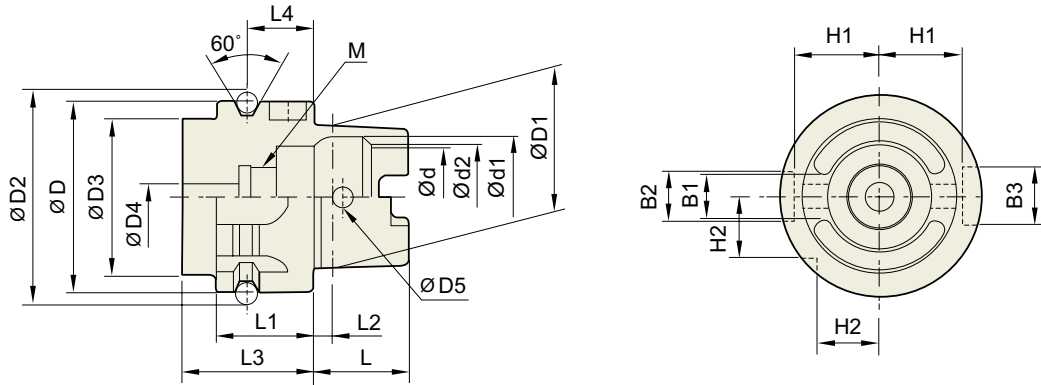
Radial tool length pre-setting type

- Easy to adjust pre-setting length of cutting tool
(Saving time to pre-set cutting tool to one fifth compared with conventional Hydraulic Chuck)
- Precise adjustment of cutting tool length
- Designed to separate tool length adjustment screw from clamping screw



Adjustable range of cutting tool length : 0~10mm

APPLICATION		
<p>Milling</p>	<p>High-Speed Cutting</p>	<p>Fine Drilling</p>
<p>Reaming</p>	<p>Tapping & Thread Milling</p>	<p>Chamfering</p>

TECHNICAL DATA : SHANK STANDARD
**DIN 69893/
ISO12164-1-HSK**


Unit : mm

TAPER No.	$\varnothing D$	$\varnothing D1$	$\varnothing D2$	$\varnothing D3$	$\varnothing D4$	$\varnothing D5$	L	L1	L2	L3	L4
HSK32A	32	24	37.00	26	4.2	4.0	16	20	3.2	35	16
HSK40A	40	30	45.00	34	5.0	4.6	20	20	4.0	35	16
HSK50A	50	38	59.30	42	6.8	6.0	25	26	5.0	42	18
HSK63A	63	48	72.30	53	8.4	7.5	32	26	6.3	42	18
HSK80A	80	60	88.8	68	10.2	8.5	40	26	8	42	18
HSK100A	100	75	109.75	85	12.0	12.0	50	29	10.0	45	20

Unit : mm

TAPER No.	$\varnothing d$	$\varnothing d1$	$\varnothing d2$	B1	B2	B3	H1	H2	L4
HSK32A	17	20.5	19	7.05	7	9	13.0	9.5	M10×1.0
HSK40A	21	25.5	23	8.05	9	11	17.0	12.0	M12×1.0
HSK50A	26	32.0	29	10.54	12	14	21.0	15.5	M16×1.0
HSK63A	34	40.0	37	12.54	16	18	26.5	20.0	M18×1.0
HSK80A	42	50	46	16.04	18	20	34	25	M20×1.5
HSK100A	53	63.0	58	20.02	20	22	44.0	31.5	M24×1.5

 HYDRAULIC
CHUCK

 SHRINK FIT
HOLDER

 ER COLLET
CHUCK

 END MILL
HOLDER &
SIDE LOCK
ARBOR

 SHELL MILL
ARBOR

 POWER
MILLING
CHUCK

 MORSE
TAPER
ARBOR

 SK SLIM
CHUCK

 SYNCHRO
TAPPING
CHUCK

 ONE STEP
TAPPING
CHUCK

 TAPPING
ER CHUCK

 TAPPING
CHUCK

 FACE MILL
ARBOR

 COPY MILL
ARBOR &
INDEXABLE
DRILL HOLDER

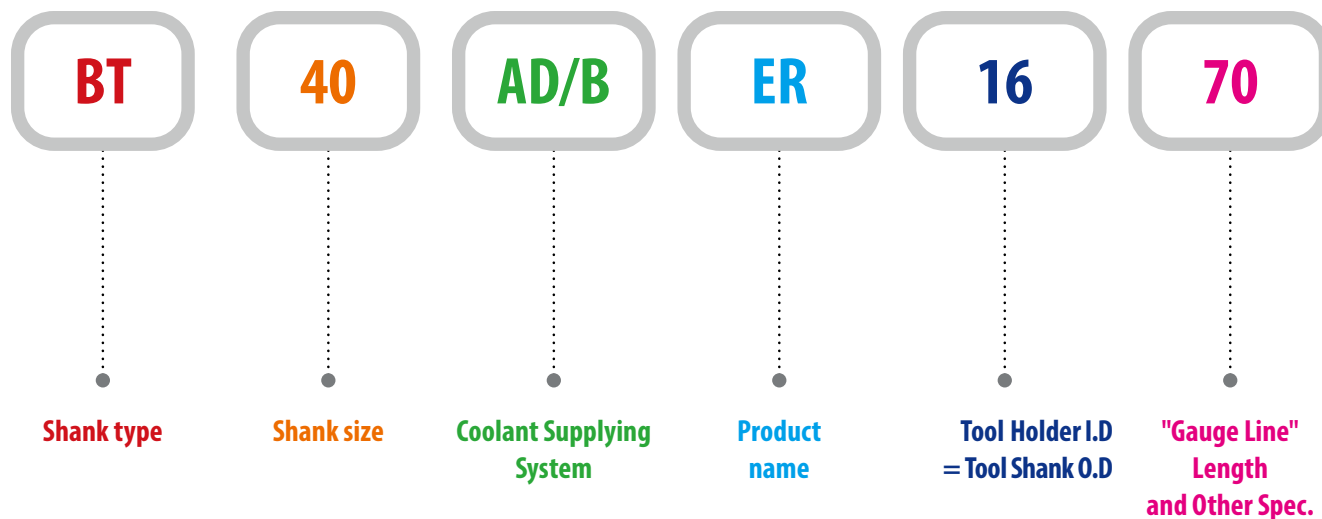
 NC DRILL
CHUCK &
OTHER TOOL
HOLDERS

 BORING
SYSTEM

 ACCESSORY
& OTHERS

MODEL NUMBERING SYSTEM & SURFACE FINISH

Model Numbering System



Surface Finish

