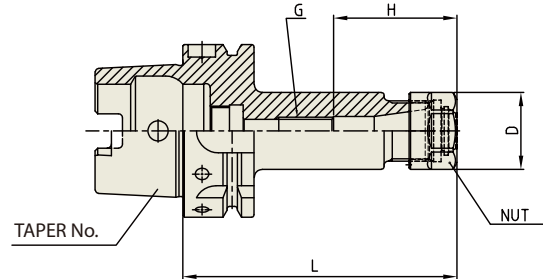



ER COLLET CHUCK

FRÄSERSPANNFUTTER - ER
 MANDRIN À PINCES - ER
 MANDRINO PORTA PINZE - ER
 PORTAPINZAS - ER

**DIN 69893/
 ISO 12164-1-HSK FORM A**


 ER Collet
 Refer to page 103-109


 ER nut, Sealing disk and Spanner
 Refer to page 110-115

◆ Standard Type

Unit : mm

| TAPER No. | MODEL No. | EDP No. | CLAMPING RANGE | L | D | G | H | NUT / COLLET | WEIGHT (kg) |
|-----------|------------------|----------|----------------|-----|----|-----|------|--------------|-------------|
| 50A | HSK50A-ER16-100 | P2771927 | 0.5 - 10.0 | 100 | 28 | M12 | 45 | ER16 | 0.70 |
| | HSK50A-ER20-100 | P2771928 | 0.5 - 13.0 | 100 | 35 | M12 | 50 | ER20 | 0.90 |
| | HSK50A-ER25-100 | P2771929 | 1.0 - 16.0 | 100 | 42 | M12 | 50 | ER25 | 1.20 |
| | HSK50A-ER32-100 | P2771930 | 1.0 - 20.0 | 100 | 50 | M12 | 47 | ER32 | 1.50 |
| 63A | HSK63A-ER16-100 | P2564001 | 0.5 - 10.0 | 100 | 28 | M12 | 45 | ER16 | 1.20 |
| | HSK63A-ER20-100 | P2564005 | 0.5 - 13.0 | 100 | 35 | M12 | 50 | ER20 | 1.50 |
| | HSK63A-ER25-100 | P2564002 | 1.0 - 16.0 | 100 | 42 | M12 | 57 | ER25 | 1.80 |
| | HSK63A-ER32-100 | P2564003 | 1.0 - 20.0 | 100 | 50 | M12 | 47 | ER32 | 2.00 |
| | HSK63A-ER40-120 | P2564004 | 2.0 - 30.0 | 120 | 63 | M12 | 69 | ER40 | 2.30 |
| 80A | HSK80A-ER16-100 | P2771932 | 0.5 - 10.0 | 100 | 28 | M12 | 45 | ER16 | 1.77 |
| | HSK80A-ER25-100 | P2771933 | 1.0 - 16.0 | 100 | 42 | M12 | 47 | ER20 | 1.79 |
| | HSK80A-ER32-100 | P2771934 | 1.0 - 20.0 | 100 | 50 | M12 | 53 | ER25 | 1.95 |
| 100A | HSK100A-ER16-100 | P2564011 | 0.5 - 10.0 | 100 | 28 | M12 | 45 | ER16 | 2.60 |
| | HSK100A-ER20-100 | P2564015 | 0.5 - 13.0 | 100 | 35 | M12 | 50 | ER20 | 2.70 |
| | HSK100A-ER25-100 | P2564012 | 1.0 - 16.0 | 100 | 42 | M12 | 57 | ER25 | 2.90 |
| | HSK100A-ER32-100 | P2564013 | 1.0 - 20.0 | 100 | 50 | M12 | 56.5 | ER32 | 3.10 |
| | HSK100A-ER40-120 | P2564014 | 2.0 - 30.0 | 120 | 63 | M12 | 69 | ER40 | 3.30 |

HYDRAULIC CHUCK

SHRINK FIT HOLDER

ER COLLET CHUCK

END MILL HOLDER & SIDE LOCK ARBOR

SHELL MILL ARBOR

POWER MILLING CHUCK

MORSE TAPER ARBOR

SK SLIM CHUCK

SYNCHRO TAPPING CHUCK

ONE STEP TAPPING CHUCK

TAPPING ER CHUCK

TAPPING CHUCK

FACE MILL ARBOR

COPY MILL ARBOR & INDEXABLE DRILL HOLDER

NC DRILL CHUCK & OTHER TOOL HOLDERS

BORING SYSTEM

ACCESSORY & OTHERS

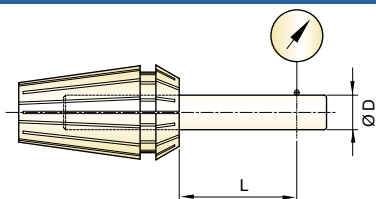
ER COLLET CHUCK



FEATURE

- Powerful chucking, high precision and easy operation
- Precise machining is stably maintained without chattering in High-Speed rotation.
- Due to nut designed with small bore, interference with work piece can be minimized and it enables speedy operation.
- Various nuts can be selected and used according to usage.
- Unlike single taper, double taper has long chucking part providing excellent torque power.

HIGH PRECISION

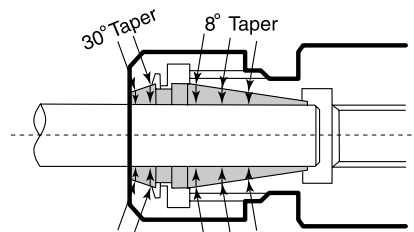


- By using high precision collet, excellent T.I.R can be achievable.
- With fine cutting of 16 sections, it has excellent contractile force, which makes higher precision can be achieved.

| D | L | Max.T.I.R(STD.) |
|-----------|----|-----------------|
| Ø1 ~ Ø1.6 | 6 | 0.015 |
| Ø1.6 ~ Ø3 | 10 | 0.015 |
| Ø3 ~ Ø6 | 16 | 0.015 |
| Ø6 ~ Ø10 | 25 | 0.015 |
| Ø10 ~ Ø18 | 40 | 0.020 |
| Ø18 ~ Ø26 | 50 | 0.020 |
| Ø26 ~ Ø34 | 60 | 0.020 |

STRONG TORQUE POWER

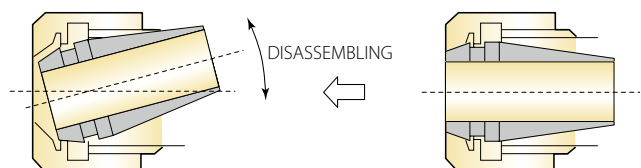
- Longer clamping part of double taper collet provides stronger torque power.
- Stronger torque power can be achieved if ball bearing nut is used.



EASY ASSEMBLING AND DISASSEMBLING

- For assembling or disassembling of collet, first gently insert groove part of collet into eccentric portion inside nut, and fasten it to same direction as screw or loosen it reversely.

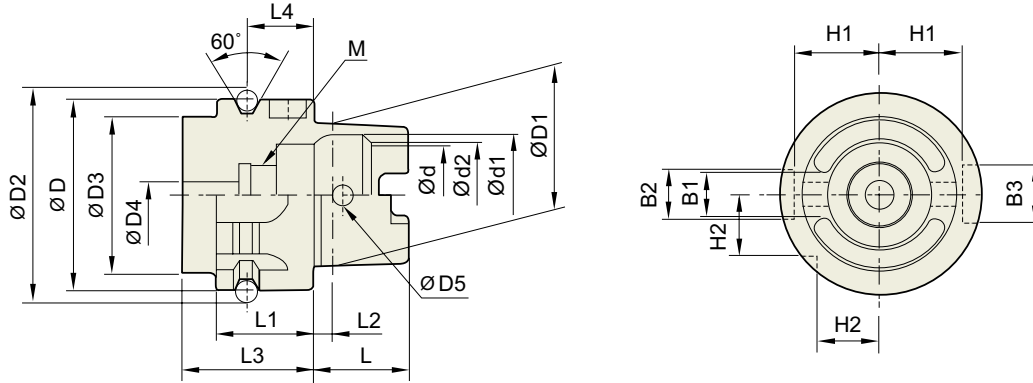
- Notice :
In case of Ø12.2mm tool, don't use Ø12~11mm collet.
But use collet with Ø12.5~11.5mm.
(In case of general cutting process, Ø13~12mm collet is usable)





TECHNICAL DATA : SHANK STANDARD

**DIN 69893/
ISO12164-1-HSK**



Unit : mm

| TAPER No. | ØD | ØD1 | ØD2 | ØD3 | ØD4 | ØD5 | L | L1 | L2 | L3 | L4 |
|-----------|-----|-----|--------|-----|------|------|----|----|------|----|----|
| HSK32A | 32 | 24 | 37.00 | 26 | 4.2 | 4.0 | 16 | 20 | 3.2 | 35 | 16 |
| HSK40A | 40 | 30 | 45.00 | 34 | 5.0 | 4.6 | 20 | 20 | 4.0 | 35 | 16 |
| HSK50A | 50 | 38 | 59.30 | 42 | 6.8 | 6.0 | 25 | 26 | 5.0 | 42 | 18 |
| HSK63A | 63 | 48 | 72.30 | 53 | 8.4 | 7.5 | 32 | 26 | 6.3 | 42 | 18 |
| HSK80A | 80 | 60 | 88.8 | 68 | 10.2 | 8.5 | 40 | 26 | 8 | 42 | 18 |
| HSK100A | 100 | 75 | 109.75 | 85 | 12.0 | 12.0 | 50 | 29 | 10.0 | 45 | 20 |

Unit : mm

| TAPER No. | Ød | Ød1 | Ød2 | B1 | B2 | B3 | H1 | H2 | L4 |
|-----------|----|------|-----|-------|----|----|------|------|---------|
| HSK32A | 17 | 20.5 | 19 | 7.05 | 7 | 9 | 13.0 | 9.5 | M10×1.0 |
| HSK40A | 21 | 25.5 | 23 | 8.05 | 9 | 11 | 17.0 | 12.0 | M12×1.0 |
| HSK50A | 26 | 32.0 | 29 | 10.54 | 12 | 14 | 21.0 | 15.5 | M16×1.0 |
| HSK63A | 34 | 40.0 | 37 | 12.54 | 16 | 18 | 26.5 | 20.0 | M18×1.0 |
| HSK80A | 42 | 50 | 46 | 16.04 | 18 | 20 | 34 | 25 | M20×1.5 |
| HSK100A | 53 | 63.0 | 58 | 20.02 | 20 | 22 | 44.0 | 31.5 | M24×1.5 |

HYDRAULIC
CHUCK

SHRINK FIT
HOLDER

ER COLLET
CHUCK

END MILL
HOLDER &
SIDE LOCK
ARBOR

SHELL MILL
ARBOR

POWER
MILLING
CHUCK

MORSE
TAPER
ARBOR

SK SLIM
CHUCK

SYNCHRO
TAPPING
CHUCK

ONE STEP
TAPPING
CHUCK

TAPPING
ER CHUCK

TAPPING
CHUCK

FACE MILL
ARBOR

COPY MILL
ARBOR &
INDEXABLE
DRILL HOLDER

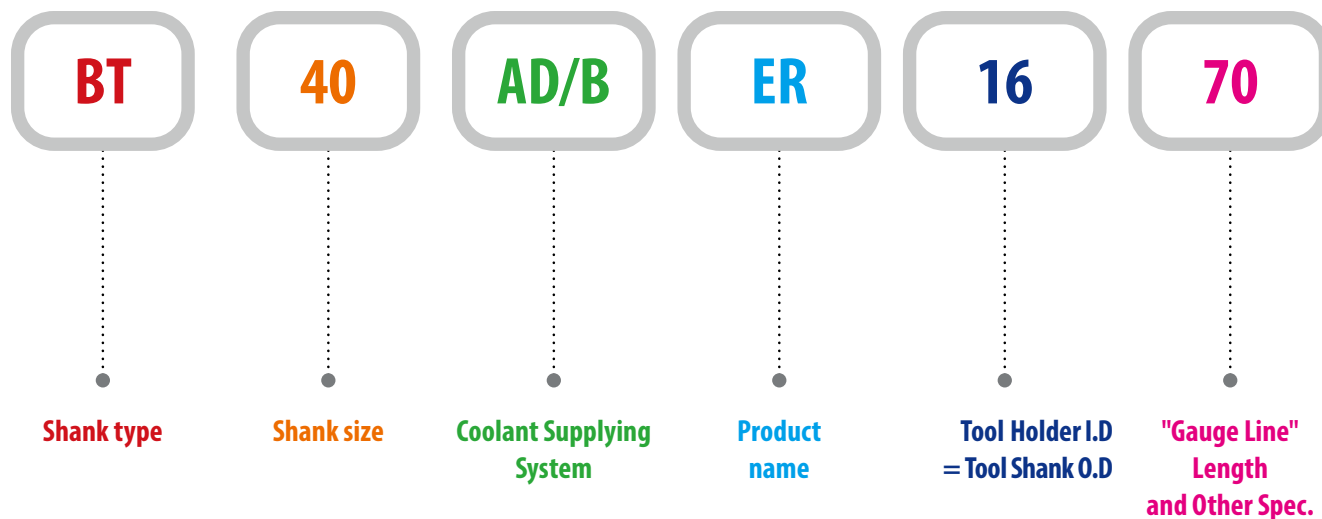
NC DRILL
CHUCK &
OTHER TOOL
HOLDERS

BORING
SYSTEM

ACCESSORY
& OTHERS

MODEL NUMBERING SYSTEM & SURFACE FINISH

Model Numbering System



Surface Finish

