

# YG END MILL HOLDER & SIDE LOCK ARBOR

EMH

## END MILL HOLDER (COOLANT CHANNEL)

DIN 69871-SK

FRÄSERFUTTER UND FLÄCHENSPANNFUTTER  
 MANDRIN PORTE FRAISE À QUEUE CYLINDRIQUE, À MÉPLAT  
 MANDRINI PORTA FRESA TIPO WELDON  
 PORTAFRESAS Y EJES DE SUJECCION LATERAL



FIG.1

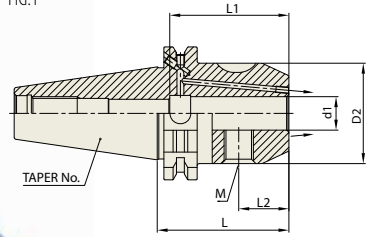
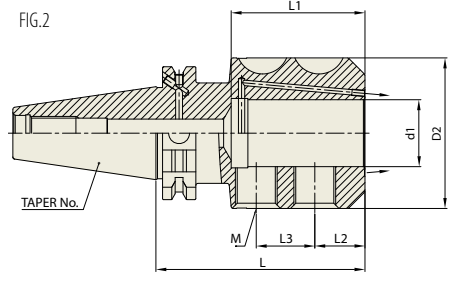


FIG.2



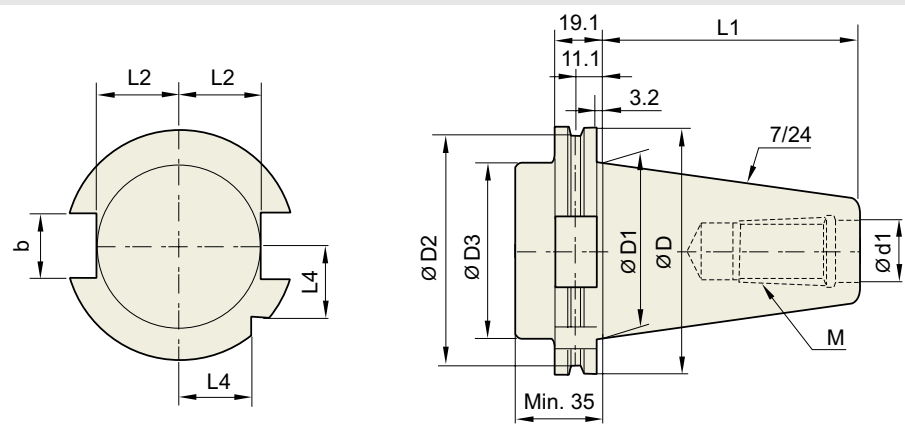
Unit : mm

| TAPER No. | MODEL No.           | EDP No.  | d1 | D2  | L   | L1 | L2   | L3 | M   | FIG. | WEIGHT (kg) |
|-----------|---------------------|----------|----|-----|-----|----|------|----|-----|------|-------------|
| 40        | SK40AD/B-EMH6C-50   | P2779001 | 6  | 25  | 50  | 35 | 18   | -  | M6  | 1    | 0.86        |
|           | SK40AD/B-EMH8C-50   | P2779002 | 8  | 28  | 50  | 35 | 18   | -  | M8  | 1    | 0.89        |
|           | SK40AD/B-EMH10C-50  | P2779003 | 10 | 35  | 50  | 39 | 20   | -  | M10 | 1    | 0.95        |
|           | SK40AD/B-EMH12C-50  | P2779004 | 12 | 42  | 50  | 46 | 22.5 | -  | M12 | 1    | 1.03        |
|           | SK40AD/B-EMH14C-50  | P2779005 | 14 | 44  | 50  | 48 | 22.5 | -  | M12 | 1    | 1.26        |
|           | SK40AD/B-EMH16C-63  | P2779006 | 16 | 48  | 63  | 57 | 24   | -  | M14 | 1    | 1.28        |
|           | SK40AD/B-EMH18C-63  | P2779007 | 18 | 50  | 63  | 54 | 24   | -  | M14 | 1    | 1.35        |
|           | SK40AD/B-EMH20C-63  | P2779008 | 20 | 52  | 63  | 54 | 25   | -  | M16 | 1    | 1.28        |
|           | SK40AD/B-EMH25C-100 | P2779009 | 25 | 65  | 100 | 60 | 24   | 25 | M18 | 2    | 2.28        |
|           | SK40AD/B-EMH32C-100 | P2779010 | 32 | 72  | 100 | 64 | 24   | 28 | M20 | 2    | 2.50        |
| 50        | SK50AD/B-EMH6C-63   | P2779011 | 6  | 25  | 50  | 35 | 18   | -  | M6  | 1    | 2.70        |
|           | SK50AD/B-EMH8C-63   | P2779012 | 8  | 28  | 50  | 35 | 18   | -  | M8  | 1    | 2.70        |
|           | SK50AD/B-EMH10C-63  | P2779013 | 10 | 35  | 50  | 39 | 20   | -  | M10 | 1    | 2.90        |
|           | SK50AD/B-EMH12C-63  | P2779014 | 12 | 42  | 63  | 46 | 22.5 | -  | M12 | 1    | 2.90        |
|           | SK50AD/B-EMH14C-63  | P2779015 | 14 | 44  | 63  | 45 | 22.5 | -  | M12 | 1    | 2.90        |
|           | SK50AD/B-EMH16C-63  | P2779016 | 16 | 48  | 63  | 49 | 24   | -  | M14 | 1    | 3.00        |
|           | SK50AD/B-EMH18C-63  | P2779017 | 18 | 50  | 63  | 46 | 24   | -  | M14 | 1    | 3.00        |
|           | SK50AD/B-EMH20C-63  | P2779018 | 20 | 52  | 63  | 52 | 25   | -  | M16 | 1    | 3.05        |
|           | SK50AD/B-EMH25C-80  | P2779019 | 25 | 65  | 80  | 60 | 24   | 25 | M18 | 2    | 3.73        |
|           | SK50AD/B-EMH32C-100 | P2779020 | 32 | 72  | 100 | 64 | 24   | 28 | M20 | 2    | 4.53        |
|           | SK50AD/B-EMH40C-120 | P2779021 | 40 | 80  | 100 | 74 | 30   | 32 | M20 | 2    | 4.77        |
|           | SK50AD/B-EMH50C-125 | P2779022 | 50 | 100 | 125 | 84 | 35   | 35 | M24 | 2    | 7.03        |

- ▶ CAT(ANSI B5.50) taper and Inch type products are available.
- ▶ Standard End Mill Holder is for a cutting tool with Weldon shank and End Mill Holder for a cutting tool with Whistle notch is available upon request.
- ▶ Combi-style holder with ball jointed clamping screw which can be used with cutting tools with Weldon and Whistle notch shank is available.

**TECHNICAL DATA : SHANK STANDARD**

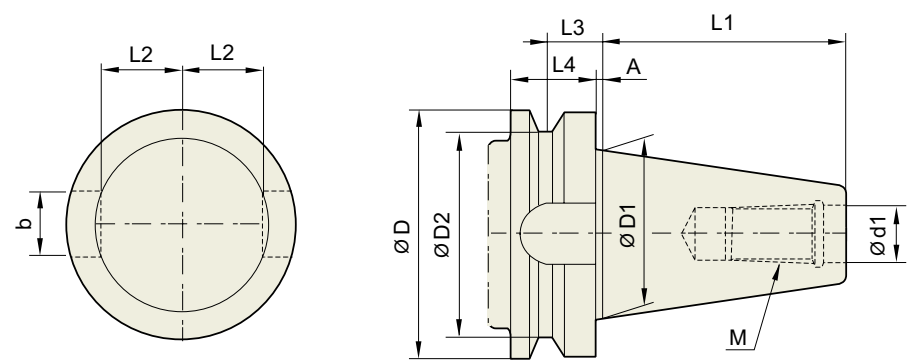
**DIN 69871-SK**



Unit : mm

| TAPER No. | ØD    | ØD1   | ØD2   | ØD3 | Ød1 | L1     | L2   | L3   | L4   | b    | M        |
|-----------|-------|-------|-------|-----|-----|--------|------|------|------|------|----------|
| SK30      | 50    | 31.75 | 44.3  | 45  | 13  | 47.8   | 16.4 | 19   | 15   | 16.1 | M12×1.75 |
| SK40      | 63.55 | 44.45 | 56.25 | 50  | 17  | 68.4   | 22.8 | 25   | 18.5 | 16.1 | M16×2.0  |
| SK50      | 97.5  | 69.85 | 91.25 | 80  | 25  | 101.75 | 35.5 | 37.7 | 30   | 25.7 | M24×3.0  |

**JIS B6339/ MAS 403-BT**

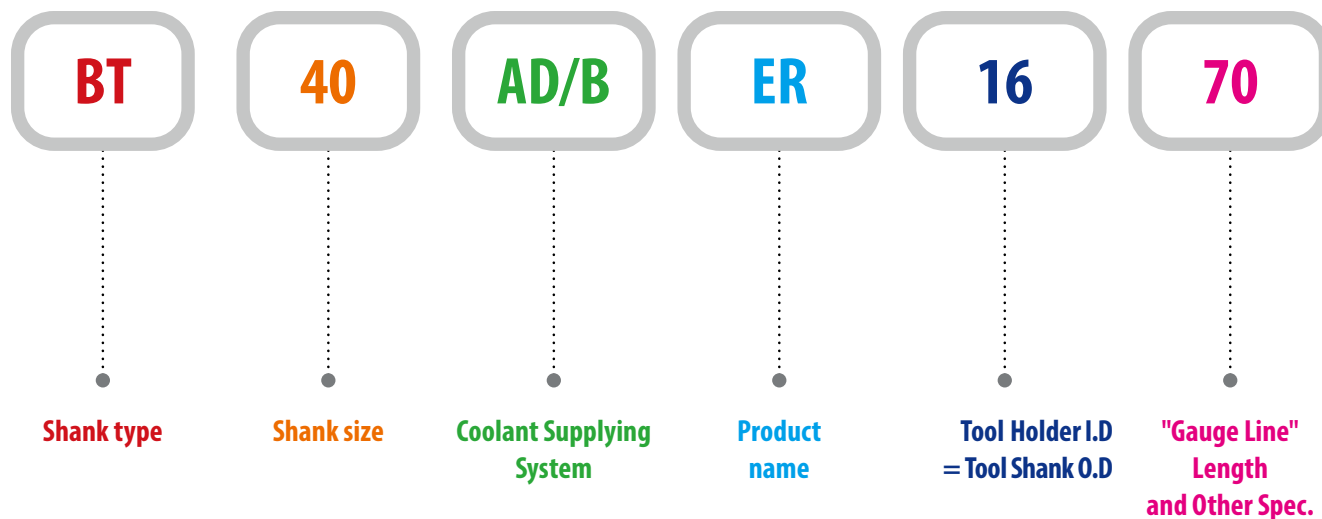


Unit : mm

| TAPER No. | ØD  | ØD1    | ØD2 | Ød13. | L1    | L2   | L3   | L4 | A | b    | M        |
|-----------|-----|--------|-----|-------|-------|------|------|----|---|------|----------|
| BT30      | 46  | 31.75  | 38  | 12.5  | 48.4  | 16.3 | 13.6 | 20 | 2 | 16.1 | M12×1.75 |
| BT40      | 63  | 44.45  | 53  | 17    | 65.4  | 22.6 | 16.6 | 25 | 2 | 16.1 | M16×2    |
| BT50      | 100 | 69.85  | 85  | 25    | 101.8 | 35.4 | 23.2 | 35 | 3 | 25.7 | M24×3    |
| BT60      | 155 | 107.95 | 135 | 31    | 161.8 | 60.1 | 28.2 | 45 | 3 | 25.7 | M30×3.5  |

# MODEL NUMBERING SYSTEM & SURFACE FINISH

## Model Numbering System



## Surface Finish

