



END MILL HOLDER & SIDE LOCK ARBOR

EMH

END MILL HOLDER (COOLANT CHANNEL)

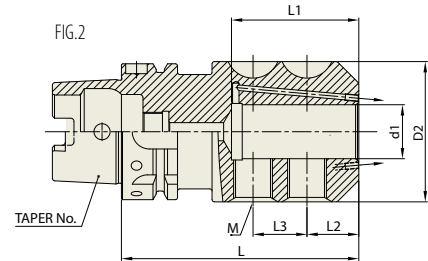
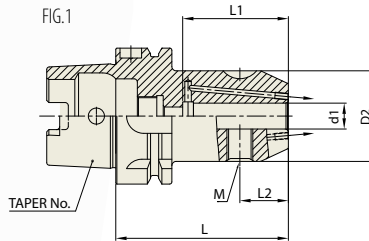
DIN 69893/
ISO 12164-1-HSK FORM A

FRÄSERFUTTER UND FLÄCHENSpanNFUTTER

MANDRIN PORTE FRAISE À QUEUE CYLINDRIQUE, À MÉPLAT

MANDRINI PORTA FRESA TIPO WELDON

PORTAFRESAS Y EJES DE SUJECCION LATERAL



Unit : mm

TAPER No.	MODEL No.	EDP No.	d1	D2	L	L1	L2	L3	M	FIG.	WEIGHT (kg)
40A	HSK40A-EMH6C-60	P2563061	6	25	60	38	18	-	M6	1	0.30
	HSK40A-EMH8C-60	P2563062	8	28	60	38	18	-	M8	1	0.30
	HSK40A-EMH10C-60	P2563063	10	35	60	42	20	-	M10	1	0.30
	HSK40A-EMH12C-70	P2563064	12	42	70	47	22.5	-	M12	1	0.40
	HSK40A-EMH14C-70	P2563065	14	44	70	47	22.5	-	M12	1	0.40
	HSK40A-EMH16C-80	P2563066	16	48	80	50	24	-	M14	1	0.60
50A	HSK50A-EMH6C-65	P2563067	6	25	65	38	18	-	M6	1	0.70
	HSK50A-EMH8C-65	P2563068	8	28	65	38	18	-	M8	1	0.80
	HSK50A-EMH10C-65	P2563069	10	35	65	42	20	-	M10	1	0.80
	HSK50A-EMH12C-80	P2563070	12	42	80	47	22.5	-	M12	1	1.20
	HSK50A-EMH14C-80	P2563071	14	44	80	47	22.5	-	M12	1	1.30
	HSK50A-EMH16C-80	P2563072	16	48	80	50	24	-	M14	1	1.30
	HSK50A-EMH18C-80	P2563073	18	50	80	50	24	-	M14	1	1.40
63A	HSK50A-EMH20C-80	P2563074	20	52	80	52	25	-	M16	1	1.50
	HSK63A-EMH6C-65	P2563021	6	25	65	35	18	-	M6	1	0.80
	HSK63A-EMH8C-65	P2563022	8	28	65	40	18	-	M8	1	0.80
	HSK63A-EMH10C-65	P2563023	10	35	65	40.5	20	-	M10	1	0.90
	HSK63A-EMH12C-80	P2563024	12	42	80	49	22.5	-	M12	1	1.10
	HSK63A-EMH14C-80	P2563025	14	44	80	49	22.5	-	M12	1	1.20
	HSK63A-EMH16C-80	P2563026	16	48	80	52	24	-	M14	1	1.30
	HSK63A-EMH18C-80	P2563027	18	50	80	52	24	-	M14	1	1.40
	HSK63A-EMH20C-80	P2563028	20	52	80	53	25	-	M16	1	1.50
	HSK63A-EMH25C-110	P2563029	25	65	110	59	24	25	M16	2	2.30
100A	HSK63A-EMH32C-110	P2563030	32	72	110	63	24	28	M16	2	2.60
	HSK100A-EMH6C-80	P2563059	6	25	80	35	18	-	M6	1	0.80
	HSK100A-EMH8C-80	P2563060	8	28	80	35	18	-	M8	1	0.80
	HSK100A-EMH10C-80	P2563052	10	35	80	35.5	20	-	M10	1	0.90
	HSK100A-EMH12C-80	P2563053	12	42	80	49	22.5	-	M12	1	1.10
	HSK100A-EMH14C-80	P2563054	14	44	80	49	22.5	-	M12	1	1.20
	HSK100A-EMH16C-100	P2563055	16	48	80	52	24	-	M14	1	1.30
	HSK100A-EMH18C-100	P2563056	18	50	80	52	24	-	M14	1	1.40
	HSK100A-EMH20C-100	P2563057	20	52	80	53	25	-	M16	1	1.50
	HSK100A-EMH25C-100	P2563058	25	65	110	59	24	25	M16	2	2.30
HSK100A-EMH32C-100	P2772801	32	72	110	63	24	28	M16	2	2.60	
HSK100A-EMH40C-120	P2772802	40	80	120	73	30	32	M16	2	2.60	

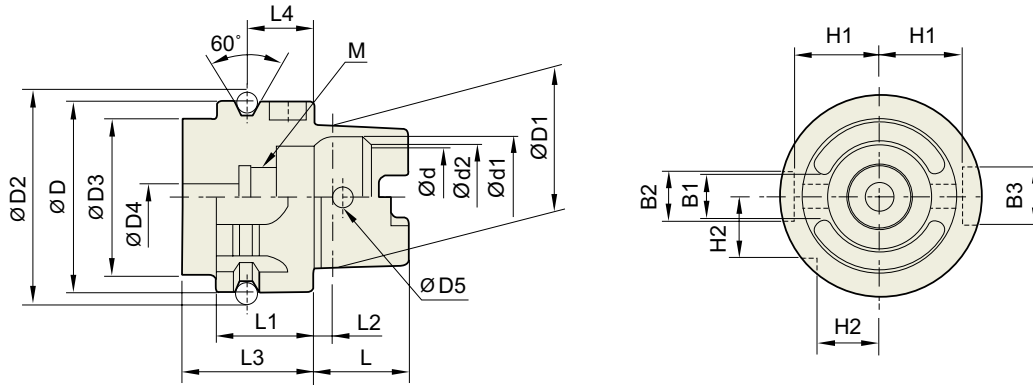
► Standard End Mill Holder is for a cutting tool with Weldon shank and End Mill Holder for a cutting tool with Whistle notch is available upon request.

► Combi-style holder with ball jointed clamping screw which can be used with cutting tools with Weldon and Whistle notch shank is available.



TECHNICAL DATA : SHANK STANDARD

**DIN 69893/
ISO12164-1-HSK**



Unit : mm

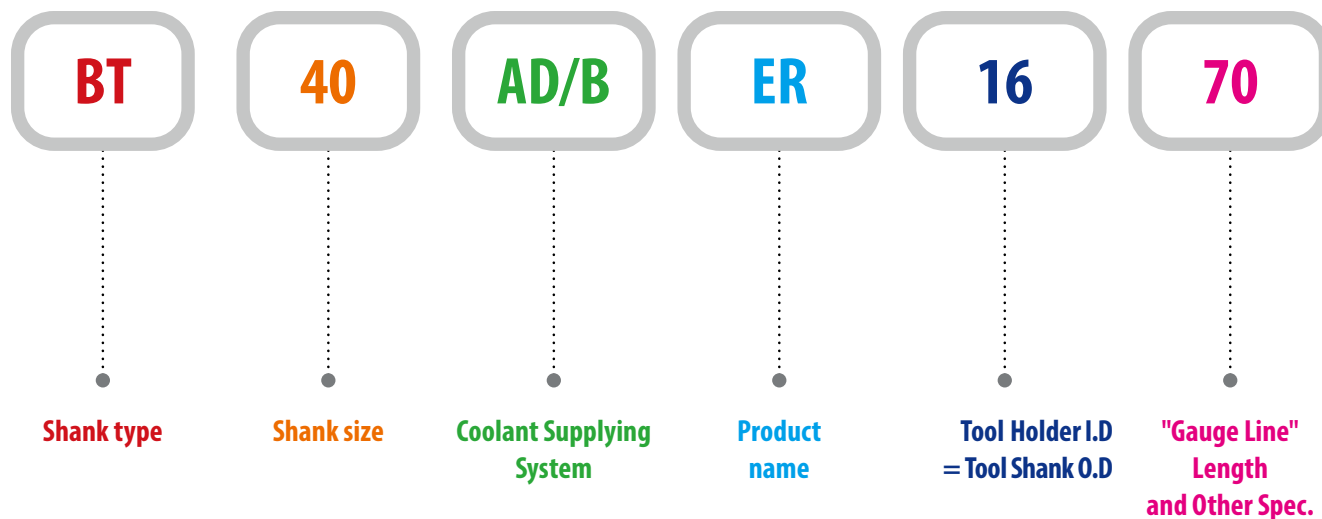
TAPER No.	$\varnothing D$	$\varnothing D1$	$\varnothing D2$	$\varnothing D3$	$\varnothing D4$	$\varnothing D5$	L	L1	L2	L3	L4
HSK32A	32	24	37.00	26	4.2	4.0	16	20	3.2	35	16
HSK40A	40	30	45.00	34	5.0	4.6	20	20	4.0	35	16
HSK50A	50	38	59.30	42	6.8	6.0	25	26	5.0	42	18
HSK63A	63	48	72.30	53	8.4	7.5	32	26	6.3	42	18
HSK80A	80	60	88.8	68	10.2	8.5	40	26	8	42	18
HSK100A	100	75	109.75	85	12.0	12.0	50	29	10.0	45	20

Unit : mm

TAPER No.	$\varnothing d$	$\varnothing d1$	$\varnothing d2$	B1	B2	B3	H1	H2	L4
HSK32A	17	20.5	19	7.05	7	9	13.0	9.5	M10×1.0
HSK40A	21	25.5	23	8.05	9	11	17.0	12.0	M12×1.0
HSK50A	26	32.0	29	10.54	12	14	21.0	15.5	M16×1.0
HSK63A	34	40.0	37	12.54	16	18	26.5	20.0	M18×1.0
HSK80A	42	50	46	16.04	18	20	34	25	M20×1.5
HSK100A	53	63.0	58	20.02	20	22	44.0	31.5	M24×1.5

MODEL NUMBERING SYSTEM & SURFACE FINISH

Model Numbering System



Surface Finish

