

MH Mega Bore 3-Jaw High-Speed Open Center Chuck



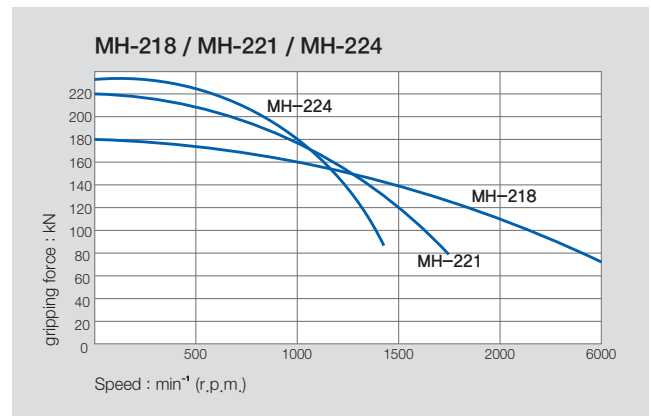
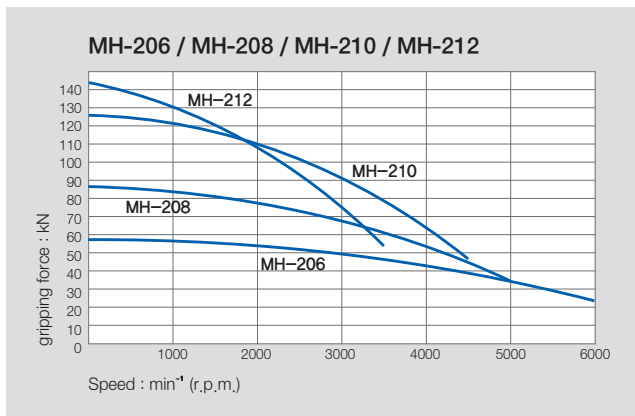
Application / Benefits

For work requiring a large through-hole

Technical features

Wedge hook style chuck with high gripping force

ACTUAL GRIPPING FORCE DIAGRAM

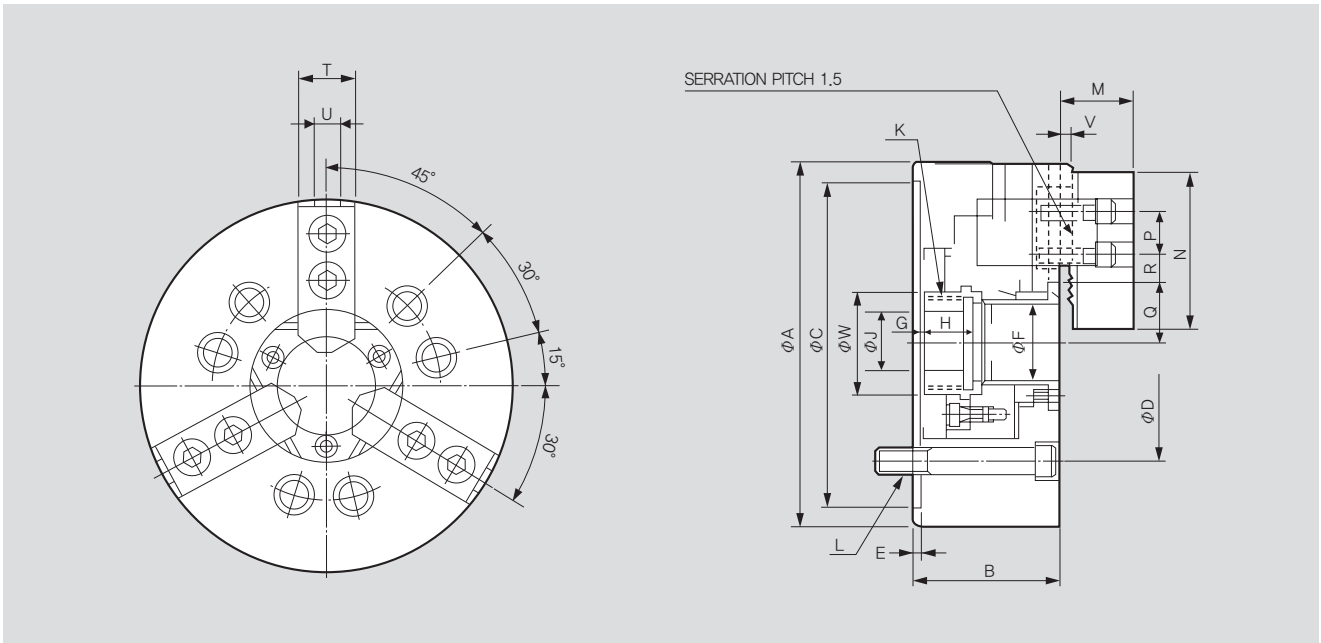


SPECIFICATIONS

	MH-206	MH-208	MH-210	MH-212	MH-218	MH-221	MH-224
Thru Hole Dia. [mm]	52	66	82	103	166.5	166.5	190
Grip Dia. Max [mm]	175	210	254	315	457	530	610
Grip Dia. Min. [mm]	16.5	23	30	54	73	105	120
Jaw Stroke Dia. [mm]	6.4	7.4	8.8	10.6	11.5	10.6	10.6
Plunger Stroke [mm]	15	17.5	19	23	25	23	23
Max. Permissible Input Force [kN(kgf)]	24.7(2551)	36.4(3596)	49(4976)	55(5608)	71(7240)	90(9177)	90(9177)
Max. Static Gripping Force [kN(kgf)]	57.3(5847)	87(8872)	126.6(12848)	144(14686)	180(18355)	220(22460)	234(23861)
Max. r.p.m. [min ⁻¹]	6000	5000	4500	3000	2000	1700	1400
Weight [kg]	11.9	23	32	55.3	170	228	293
Moment of inertia [N · m ² (kg · m ²)]	2.26(0.23)	5.6(0.57)	12.37(1.26)	28.93(2.95)	174.6(17.8)	342.1(34.7)	651(66.4)
Operating Cylinder	SH-15052 (SYH-1552)	SH-17068 (SYH-1768)	SH-19082	SH-21010	SYHL-2816	SYHL-2816	SHL-39024
Max. Hydraulic Pressure [MPa(kgf/cm ²)]	1.78(18.1)	2.34(23.9)	2.74(28)	2.65(27.2)	3.07(32)	2.86(29.1)	1.57(16.1)
Operating Hard Jaw	HB06A1	HB08A1	HB10A1	HB12N1	HB15A1	HB18B2	HB18B2

※ Specifications are subject to change without notice.

※ Samchully Machinery Co., Ltd. is no longer an OEM manufacturer for Kitagawa® Iron Works Co., Ltd.



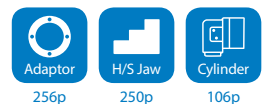
※ It is recommended to grease chucks at least twice a day in order to maximize longevity.

DIMENSIONS

	MH-206	MH-208	MH-210	MH-212	MH-218	MH-221	MH-224
ΦA	175	210	254	315	457	530	610
B	81	91	100	110	135	140	149
ΦC(H6)	140	170	220	300	380	380	380
ΦD	104.8	133.4	171.4	235	300.2	330.2	330.2
E	5	5	5	6	6	6	6
ΦF	52	66	82	103	166.5	166.5	190
G max.	14	7.5	8.5	8	8	11	20
G min.	-1	-10	-10.5	-15	-23	-12	-3
H	17.5	27	25	28	50	39	40.5
ΦJ	20	30	52	82.5	107	80	80
K max.	M60x2.0	M75x2.0	M90x2.0	M116x2.0	M175x3.0	M180x3.0	M200x3.0
L	3-M10x95	6-M12x115	6-M16x120	6-M20x130	6-M20x130	6-M22x140	6-M22x150
M	33	39	43	51	69	73	73
N	72	95	110	111	165	180	180
P	20	25	30	30	50	60	60
Q max.	38	45.7	54.5	67.3	102	111.75	119.5
Q min.	34.8	42	50.1	62	96.25	106.5	114.2
R max.	21.75	23.75	32.25	45.75	58.25	72.5	105.5
R min.	10.25	11.75	14.25	15.75	20.25	21.5	21.5
T	31	35	40	49	69	65	65
U	12	14	16	21	22	25	25
V	2	2	2	2	5	5	5
ΦW	65	80	101	124	186	197	210

※ Blank and machined draw-nuts are available.

RELATED PRODUCT



Soft Jaw

Power Chuck Soft Jaw



Application / Benefits

Works with HC.

Fig. 1

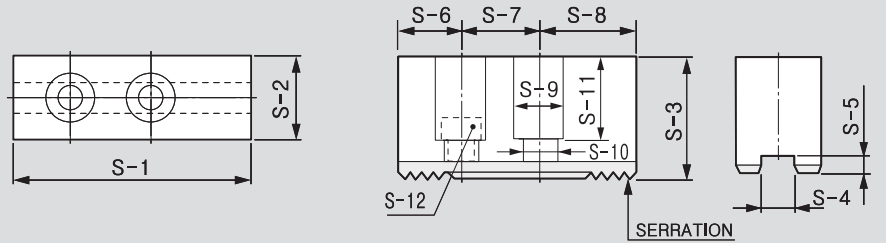


Fig. 2

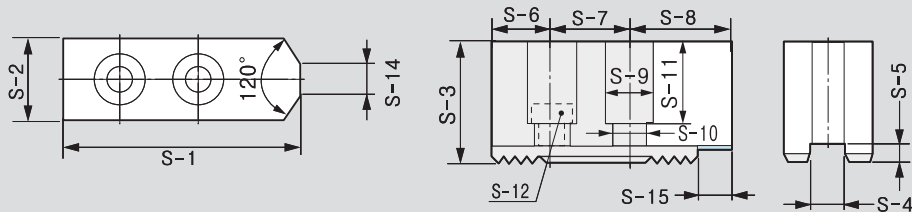
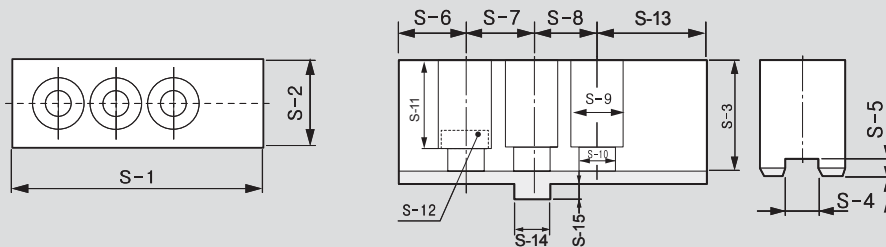


Fig. 3



※ See the product dimension Table on the right.

DIMENSIONS

	SB04C1	SB05N1	SB06B1	SB08B1	SB10B1	SB12A1	SB12N1	SB15C1
Fig.	2	2	2	2	2	1	1	1
Serration Pitch	1.5x60°	1.5x60°	1.5x60°	1.5x60°	1.5x60°	1.5x60°	1.5x60°	1.5x60°
S-1	48	54	72	95	110	129	111	165
S-2	19	23	31	35	40	50	50	62
S-3	23	25	32	38	42	50	50	66
S-4	8	10	12	14	16	18	21	22
S-5	3	4	5	5	5	5	4	8
S-6	8	12	15	24	30	39	21	37
S-7	15	14	20	25	30	30	30	43
S-8	25	28	37	46	50	60	60	85
S-9	11	13.5	17	19	19	23	25	32
S-10	7	8.5	11	13	13	15	17	21
S-11	15	16.5	20	23	27	30	33	42
S-12	M6x16	M8x20	M10x30	M12x35	M12x35	M14x45	M16x40	M20x60
S-13	-	-	-	-	-	-	-	-
S-14	6	5	12	12	15	-	-	-
S-15	-	-	-	-	20	-	-	-
Corresponding	HCH-04	HS/HC-04,05	HS/HCH/HC-06, MH-206, UR-175	HCH/HC/HS-08, MH-208, UR-210	HCH/HC/HS-10, MH-210, UR-250	HC/HCH-12	HS-12, MH-212 UR-315	HCH-15 HCH-18

	SB15N1	SB15A2	SB18A2	SB32B2	SB32GB	SB32SB2	SB40GB	SB40SB2
Fig.	1	1	1	1	3	1	3	1
Serration Pitch	1.5x60°	3.0x60°	3.0x60°	3.0x60°	-	3.0x60°	-	3.0x60°
S-1	135	165	180	160	165	185	270	270
S-2	50	62	65	75	75	75	110	110
S-3	60	66	70	75	83	75	117	110
S-4	25.5	22	25	25.5	12.7	25.5	30	30
S-5	5	8	9	7	13	7.5	13	7.5
S-6	26	30	40	25	21.9	26.8	48.8	32.5
S-7	43	50	60	38	76.2	38.1	76.2	60
S-8	66	85	80	97	-	82	76.2	-
S-9	32	32	32	32	32	32	39	39
S-10	21	21	21	22	22	22	26	26
S-11	39	42	45	54	59	57	90	90
S-12	M20x55	M20x60	M20x60	M20	M20	M20	M24	M24
S-13	-	-	-	-	-	82	68.8	117.5
S-14	-	-	-	-	19.025	-	19.025	-
S-15	-	-	-	-	-	-	-	85
Corresponding	HC-15, HC-18	MH-218	HC/HCH-21, HC/HCH-24, MH-221,224	HCH-32 [Serration]	HC-32 [Groove]	HC-32S [Serration]	HC-40 [Groove] /50,55,63,70,80	HC-40 [Serration] /50,55,63,70,80

Hard Jaw

Power Chuck Hard Jaw



Application / Benefits

Works with HC.

Fig. 1

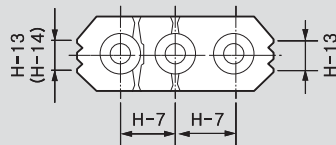


Fig. 2

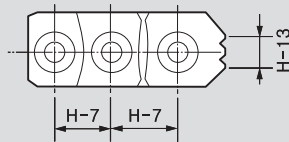
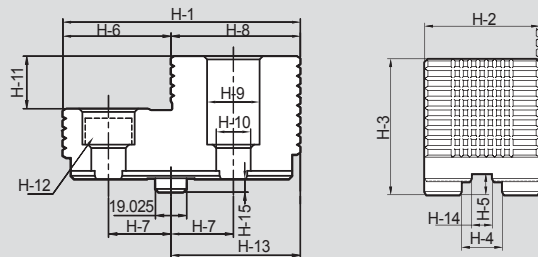
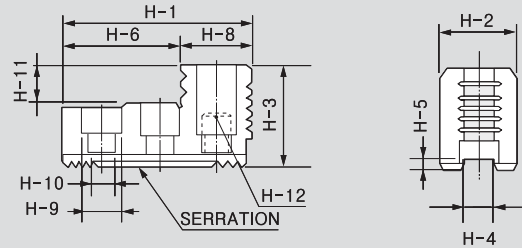
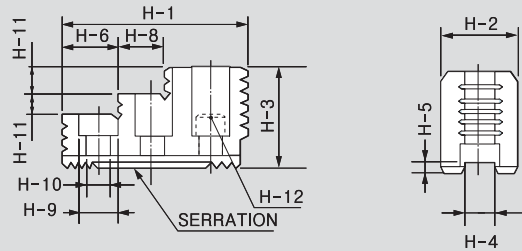
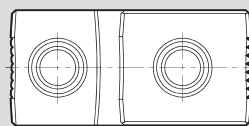


Fig. 3



※ See the product dimension Table on the right.

DIMENSIONS

	HB04N1	HB06A1	HB08A1	HB10A1	HB12B1	HB12N1	HB15A1	HB15A2
Fig.	2	1	1	1	2	2	1	1
Serration Pitch	1.5x60°	1.5x60°	1.5x60°	1.5x60°	1.5x60°	1.5x60°	1.5x60°	3.0x60°
H-1	53	67	86	99.5	97.5	103	149	149
H-2	23	31	35	40	50	50	62	62
H-3	27.5	41	51	54	55	52	86	86
H-4	10	12	14	16	18	21	22	22
H-5	4	5	5	5	5	4	9	9
H-6	30.5	18	31	43	64.5	62.5	63	63
H-7	14	20	25	30	30	30	43	50
H-8	22.5	17	18	17	33	40.5	34	34
H-9	13.5	17	19	19	22	25	32	32
H-10	8.5	11	13	13	15	17	21	21
H-11	10	9	12	13	20	17	20	20
H-12	M8	M10	M12	M12	M14	M16	M20	M20
H-13	6	10	12	15	18	30	40	40
H-14	-	10	12	15	-	-	40	40
H-15	-	-	-	-	-	-	-	-
Corresponding	HS-04, HS-05	HC/HCH/HS-06, MH-206, UR-175	HC/HCH/HS-08, MH-208, UR-210	HC/HCH/HS-10, MH-210, UR-250	HC/HCH-12	HS-12, MH-212 UR-315	HCH-15, HCH-18	MH-218

	HB15N1	HB18B2	HB32B2	HB32GB	HB32SB2	HB40GB	HB40SB2	-
Fig.	1	2	2	3	2	3	2	-
Serration Pitch	1.5x60°	3.0x60°	3.0x60°	-	3.0x60°	-	3.0x60°	-
H-1	149	159.5	150	150	168	223	223	-
H-2	62	80	70	70	70	80	80	-
H-3	86	90	75	83	75	124	117	-
H-4	25.5	25	25.5	25	25.5	30	30	-
H-5	5	9	7	13	7.5	15	8	-
H-6	69	104.5	66	66	89	133	133	-
H-7	43	50	76.2	38.1	38.1	38.1	114.3	-
H-8	27	55	79	79	79	90	90	-
H-9	32	32	32	32	32	39	39	-
H-10	21	21	21	21	21	26	26	-
H-11	20	40	32	32	32	55	55	-
H-12	M20	M20	M20	M20	M20	M24	M24	-
H-13	43	55	-	79	-	83	-	-
H-14	38	-	-	12.7	-	-	-	-
H-15	-	-	-	8	-	7	-	-
Corresponding	HC-15, HC-18	HC/HCH-21, HC/HCH-24, MH-221,224	HCH-32 [Serration]	HC-32 [Groove]	HC-32 [Serration]	HC-40[Groove] 50,55,63,70,80	HC-40[Serration] 50,55,63,70,80	-

T-NUT

Power Chuck T-Nuts



Application / Benefits

Power Chuck T-Nut

Fig. 1

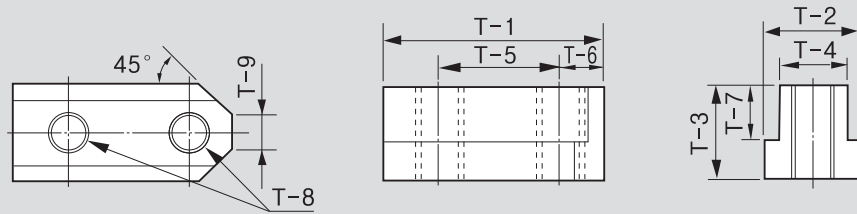


Fig. 2

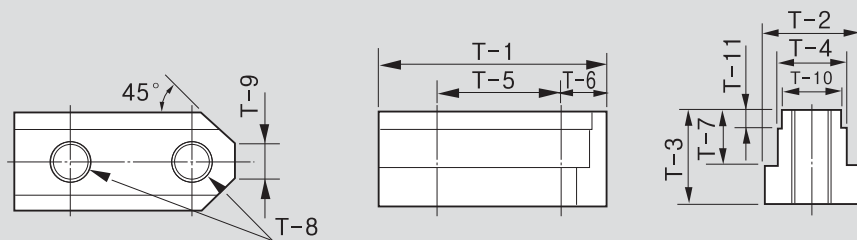
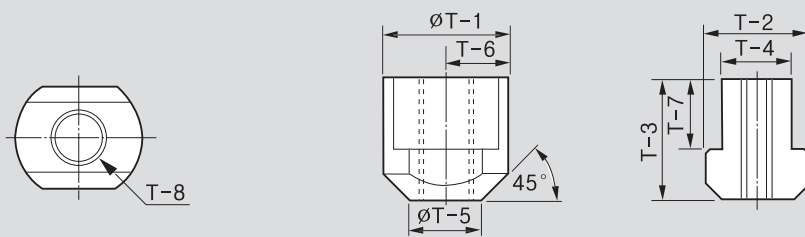


Fig. 3



※ See the product dimension Table on the right.

DIMENSIONS

	TN-HCH-04	TN-HS-04, TN-HS-05	TN-HC-04	TN-HC-05	TN-HS-06	TN-HCH, TN-HC-06	TN-HS-08	TN-HCH, TN-HC-08	TN-HS-10	TN-HCH, TN-HC-10
Fig.	1	1	1	1	1	1	1	1	1	1
T-1	24.5	26	28	32	36	36.5	46.5	48	51	55
T-2	11.5	15	15	15	17.5	17.5	20.5	20.5	22.5	22.5
T-3	13.5	15	18	18	18.5	22.5	20.5	25.5	21.5	25.5
T-4	8	10	10	10	12	12	14	14	16	16
T-5	15	14	14	19	20	20	25	25	30	30
T-6	4.5	6	7	6	8.25	7.5	10.5	11	11	11
T-7	9	9.5	12.5	12.5	11	15	12	16	13	16
T-8	M6	M8	M8	M8	M10	M10	M12	M12	M12	M12
T-9	5	5	5	6	8	6	12	8	11	8
T-10	-	-	-	-	-	-	-	-	-	-
T-11	-	-	-	-	-	-	-	-	-	-
Corresponding	HCH Type of 4" Chuck	HS Type of 4", 5" Chuck	HC Type of 4" Chuck	HC Type of 5" Chuck	HS/MH/UR Type of 6" Chuck	HCH/HC Type of 6" Chuck	HS/MH/UR Type of 8" Chuck	HCH/HC Type of 8" Chuck	HS/MH/UR Type of 10" Chuck	HCH/HC Type of 10" Chuck

	TN-HS-12	TN-HCH, TN-HC-12	TN-HCH-15, TN-HCH-18	TN-HC-15, TN-HC-18	TN-MH-218	TNX-HC-21, TNX-HC-24	TN-HCH-32	TN-HC-32	TN-HC-40
Fig.	1	1	2	1	2	3	3	3	3
T-1	55.5	55.5	80	80	80	46	35	37	42
T-2	29.5	26.5	33.5	35	33.5	37.5	35	37.5	42.5
T-3	27.75	33.5	45.5	49	45.5	45	39.5	47.5	49.5
T-4	21	18	24	25.5	24	25	25.5	25.5	30
T-5	30	30	43	43	50	26.5	25	-	-
T-6	12	11.5	17	17	17	23	-	-	-
T-7	16.25	20	29	20	29	26	20.5	28.5	30.5
T-8	M16	M14	M20	M20	M20	M20	M20	M20	M24
T-9	13	12	11	11	16	-	-	-	-
T-10	-	-	22	-	-	-	-	-	-
T-11	-	-	7.5	-	-	-	-	-	-
Corresponding	HS/MH Type of 12" Chuck	HCH/HC Type of 12" Chuck	HCH Type of 15", 18" Chuck	HC Type of 5", 18" Chuck	MH-218	HC/HCF-21,24 HCH/HCHF- 21,24(H), MH-221(H)	HCH-32	HC-32	HC-40

※ TNX-HC-21-24, TNX-HC-32 require two T-nuts per jaw.

※ TNX-HC-40 require three T-nuts per jaw.



Samchully Grease
Item No: SW-20

Important for maintenance and safe operation.

- Fortified with molybdenum disulfide (MoS₂)
- Maximum extreme-pressure protection
- Exceptional adhesion & cohesion characteristics
- Superior friction-reduction properties-protects against friction-related heat & wear
- Excellent resistance to water washout & spray off
- Reduces maintenance & downtime
- Reduces operating temperatures
- Extends equipment life.

Adaptor Plates

Power Chuck Adaptor Plates



Application / Benefits
Power Chuck Adaptor Plates

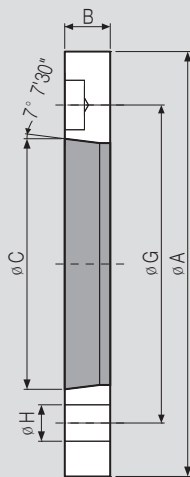


Fig. 1 : Direct Type

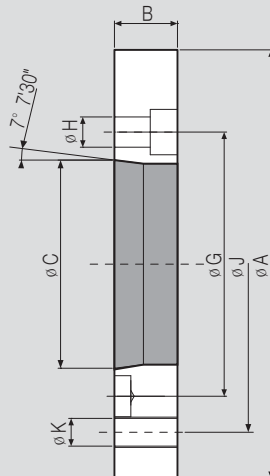


Fig. 2 : Indirect Type

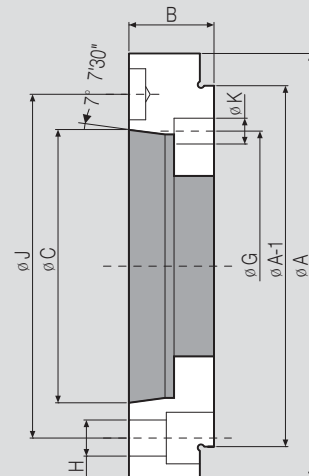


Fig. 3 : Plate Type

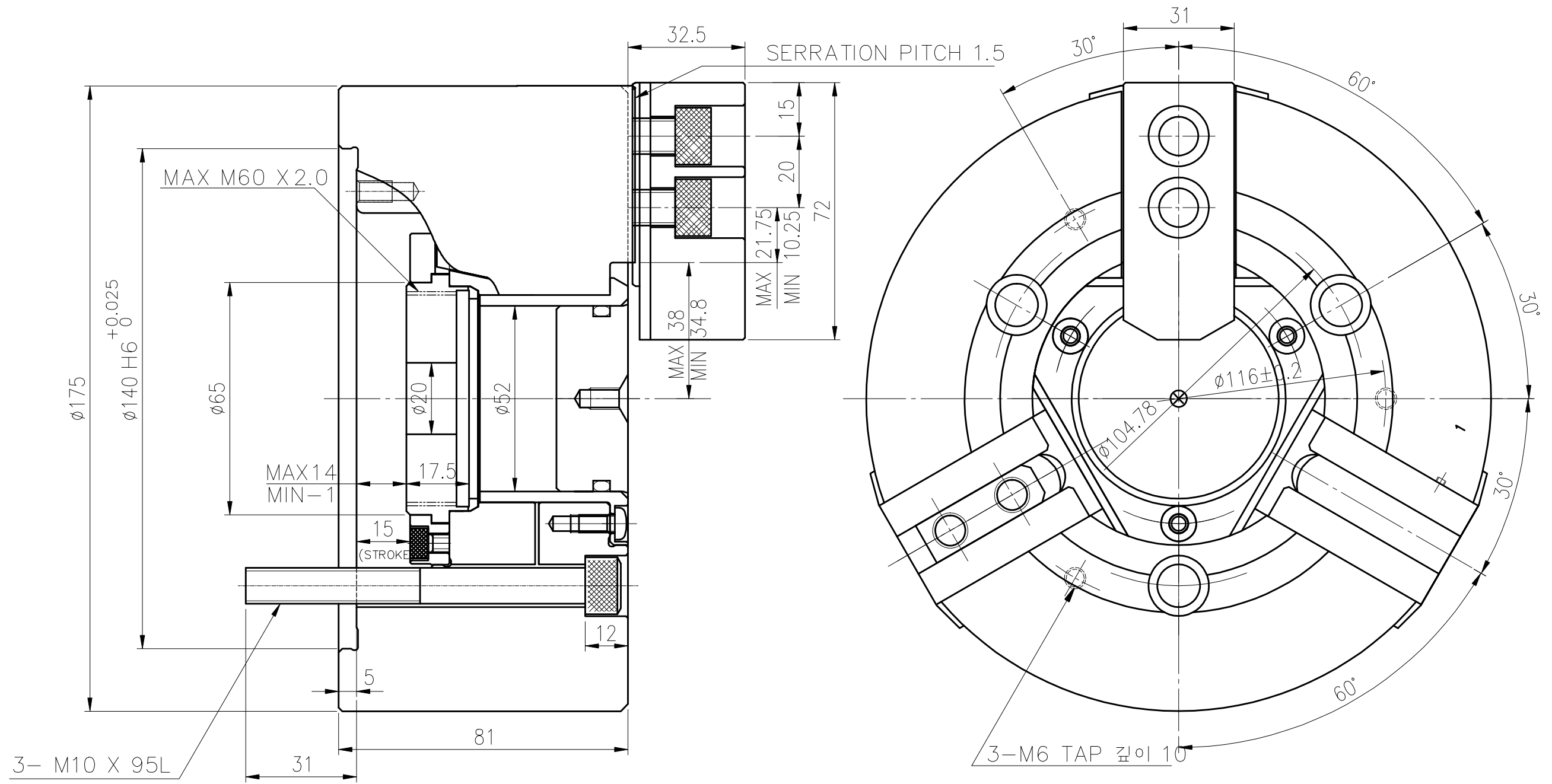
※ See the product dimension Table on the right.

DIMENSIONS

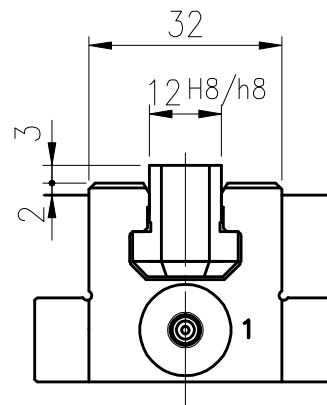
	Fig.	Spindle Nose	A	B	C	G	H	Corresponding	
AP06A05	1	A2-5	140	15	82.563	104.78	12	HS/HSL/HCH/HC/HCL-06, MH-206, UR-175	
APT06A05	1	A2-5	140	15	82.563	104.78	12	HST/HCT/HCLT-06, MHT-206	
AP08A06	1	A2-6	170	17	106.375	133.35	13.5	HS/HSL/HCH/HC/HCL-08, MH-208, UR-210	
APT08A06	1	A2-6	170	17	106.375	133.35	13.5	HST/HCT/HCLT-08, MHT-208	
APF08A06	1	A2-6	170	17	106.375	133.35	13.5	HSF/HCF/HCLF-08, MHF-208	
AP10/12A08	1	A2-8	220	18	139.719	171.45	18	HS/HSL/HCH/HC/HCL-10,12, MH-210, UR-250	
APT10/12A08	1	A2-8	220	18	139.719	171.45	17	HST/HCT/HCLT-10,12	
APF10/12A08	1	A2-8	220	18	139.719	171.45	18	HSF-10,12, HCF/HCLF-12	
AP212A08	1	A2-8	300	22	139.719	235	21	MH-212, UR-315	
AP212A11	1	A2-11	300	22	196.87	235	21	MH-212	
AP15A11	1	A2-11	300	22	196.87	235	21	HCH-15, HC-15,18	
APT15A11	1	A2-11	300	22	196.87	235	21	HCHT-15	
APF15A11	1	A2-11	300	22	196.87	235	21	HCHF-15, HCF-15,18	
AP18A11	1	A2-11	380	22	196.87	235	21	HCH-18	
APF18A11	1	A2-11	380	22	196.87	235	21	HCHF-18	
AP21/24A15	1	A2-15	380	27	285.775	330.2	24	HCH/HC-21,24, MH-221,224	

	Fig.	Spindle Nose	A	B	C	G	H	J	K	Corresponding
AP08A05	2	A2-5	170	25	82.563	104.78	12	133.35	M12	HS/ HST/ HSF/ HSL/ HCH/ HC/ HCT/ HCF/ HCL/ HCLT/ HCLF-08, MH/ MHT/ MHF-208
AP10/12A06	2	A2-6	220	25	106.375	133.35	13.5	171.45	M16	HS/ HST/ HSF/ HSL/ HCH/ HC/ HCT/ HCL/ HCLT-10,12, MH-210, HCF/ HCLF-12
AP15A08	2	A2-8	300	33	139.719	171.45	18	235	M20	HCH/ HCHT/ HCHF-15, HC/HCF-15,18
AP218A15	2	A2-15	380	60	285.775	330.2	24	300	M20	MH-218
AP21/24A11	2	A2-11	380	27	196.87	235	21	330.2	M22	HCH/ HC-21,24, MH-221,224
AP21/24A11	2	A2-11	380	42	196.87	235	22	330.2	M22	HCH/ HCHF/ HC/ HCF-21,24, MH-221,224
AP21/24A11	2	A2-11	380	42	196.87	235	22	330.2	M24	HC/HCF-32, HCH/HCHF/HC-21N,24N
AP21/24A15	2	A2-15	380	42	285.775	330.2	24	330.2	M22	HCH/ HC-21,24, MH-221,224
AP32A15	2	A2-15	380	42	285.775	330.2	26	330.2	M24	HC-32
AP32/40A11	2	A2-11	520	50	196.87	235	22	463.6	M24	HCH-32, HC-40, HC-50
AP32/40A15	2	A2-15	520	42	285.775	330.2	26	463.6	M24	HCH-32, HC-40, HC-50

	Fig.	Spindle Nose	A	A-1	B	C	G	H	J	K	Corresponding
AP06A06	3	A2-6	165	140	33	106.375	133.35	14	104.78	M10	HS/ HSL/ HCH/ HC/ HCL-06, MH-206
AP08A08	3	A2-8	210	170	30	139.719	171.45	18	133.35	M12	HS/ HST/ HSF/ HSL/ HCH/ HC/ HCT/ HCF/ HCL/ HCLT/ HCLF-08, MH/ MHT/ MHF-208

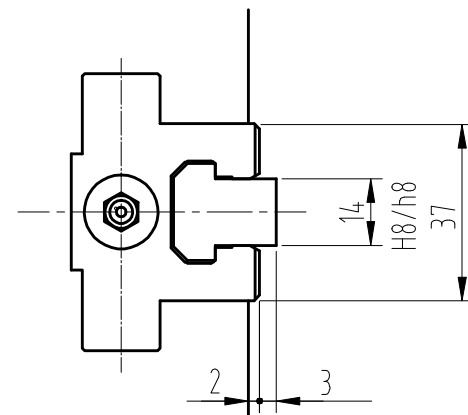
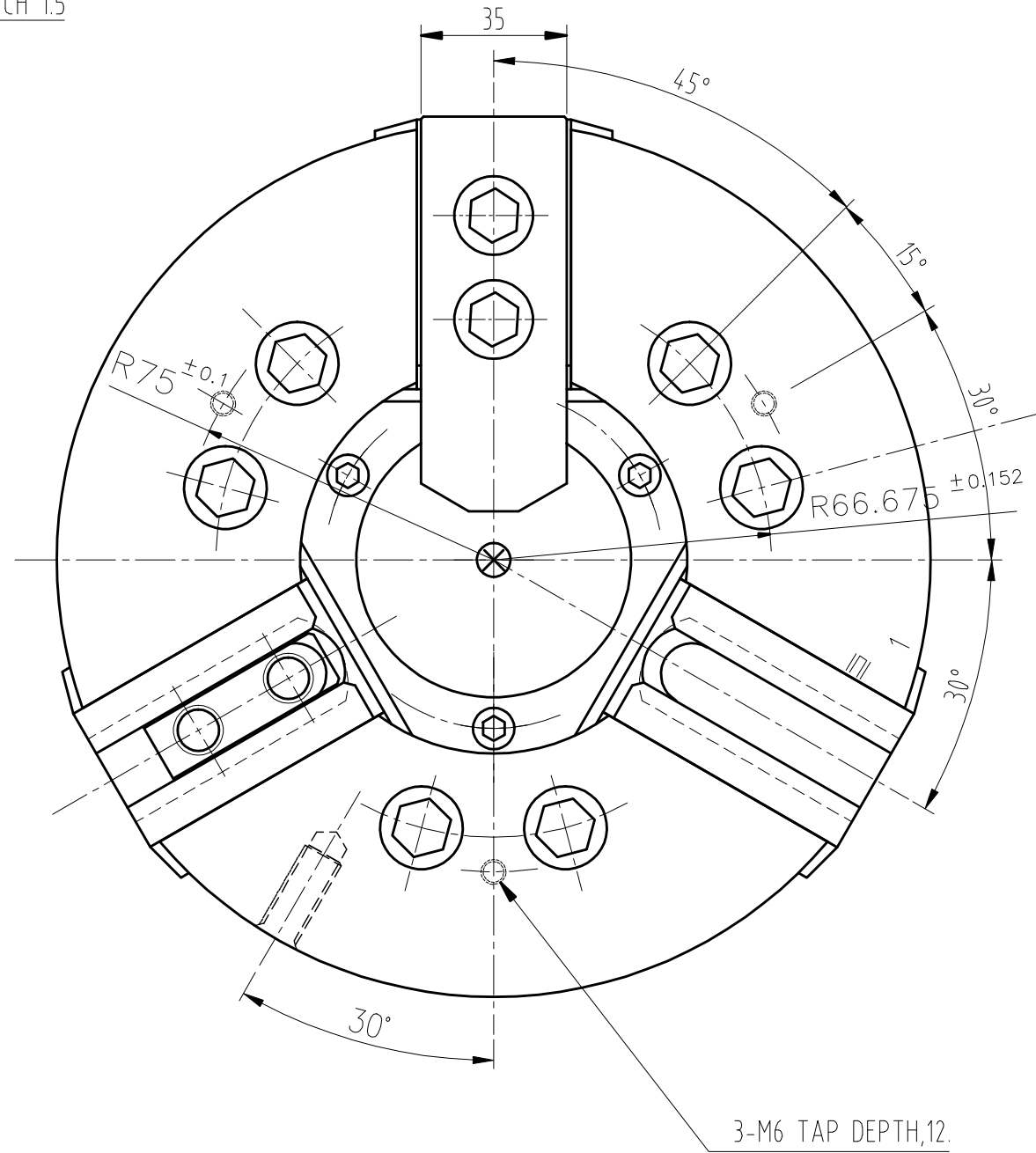
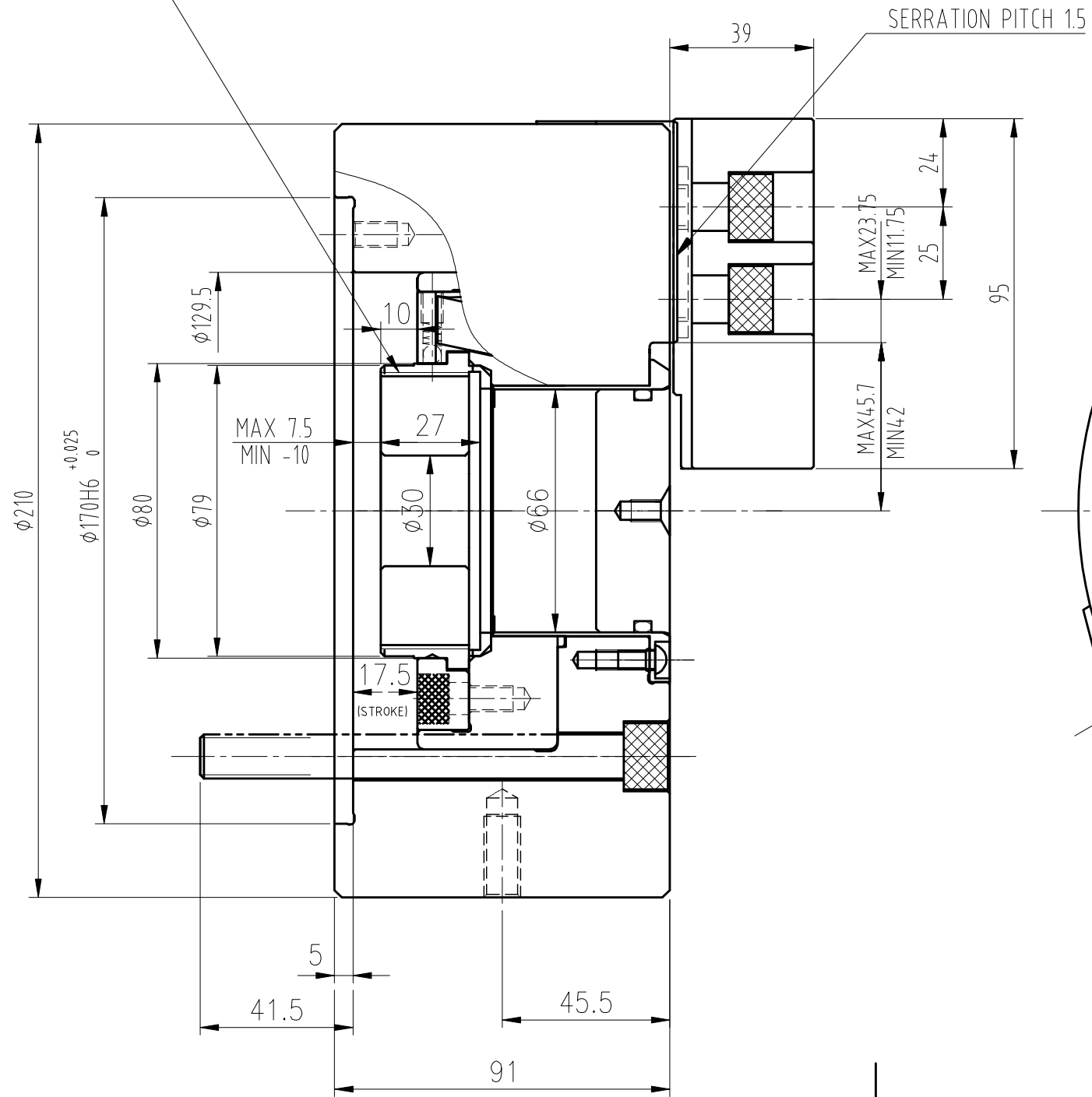


사 양	
PLUNGER STROKE	15 mm
JAW STROKE (직경)	6.4 mm
PLUNGER 허용추력	2,551 kgf (24.7KN)
최대파악력	5,812 kgf (57.3KN)
최고회전수	6,000 r.p.m.
중량(SOFT JAW 부착)	11.9 kgf
GD ² (")	0.23 kgf.m ²
최고 회전중 파악력	1,937
사용 CYLINDER	SYH1552
최대 설정 유압력	18.1 kg/cm ²



순번	구 격	부품명	외형도
번	최고속 중공 유압척	납품처	
번	HH-206-WEB	사용처	
투상		날짜	
3각법		세삼칠리 SAMCHULLY <small>HYDRAULIC SOLUTIONS</small>	
최도	1:1		
	승인	검도	실계

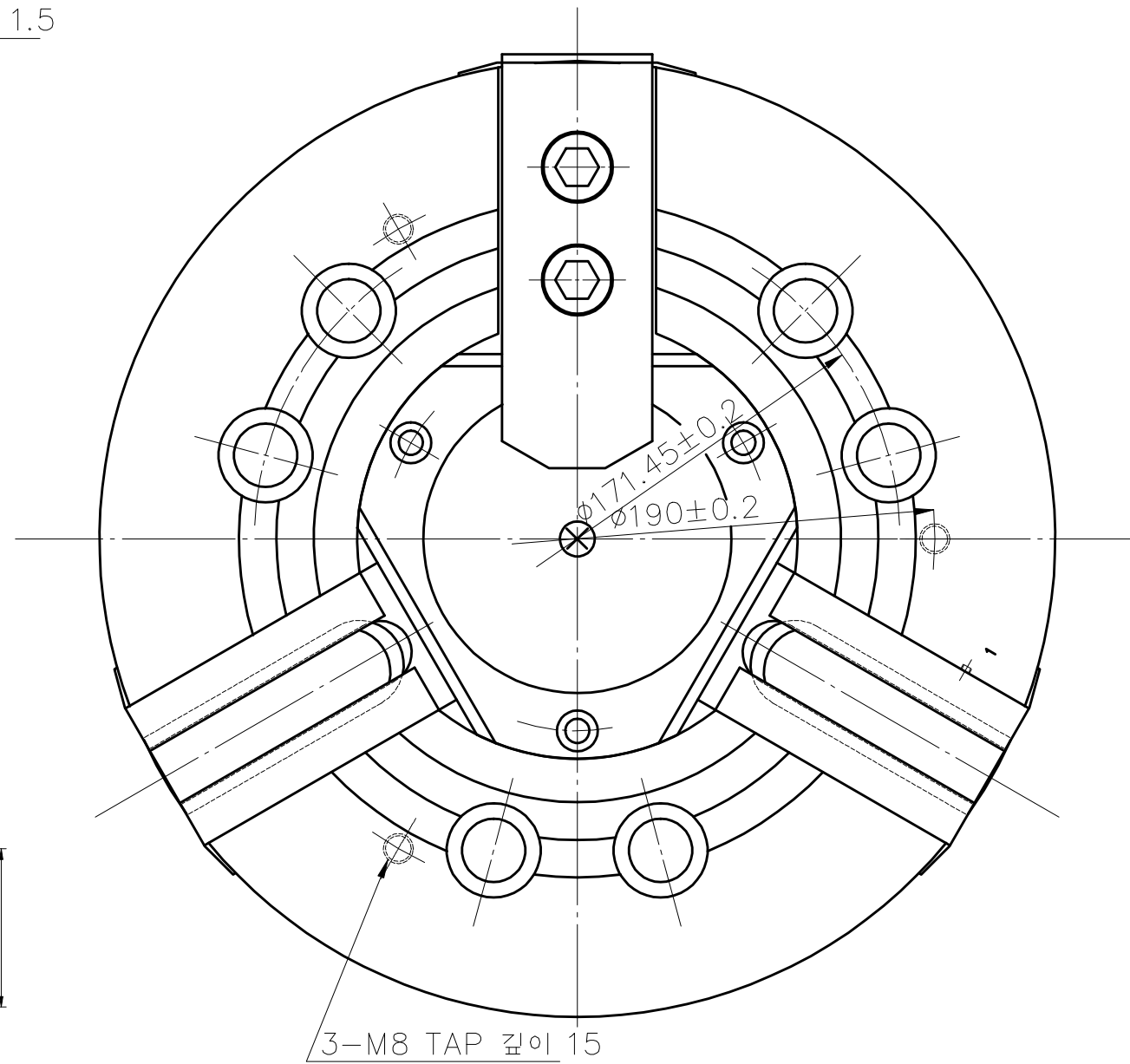
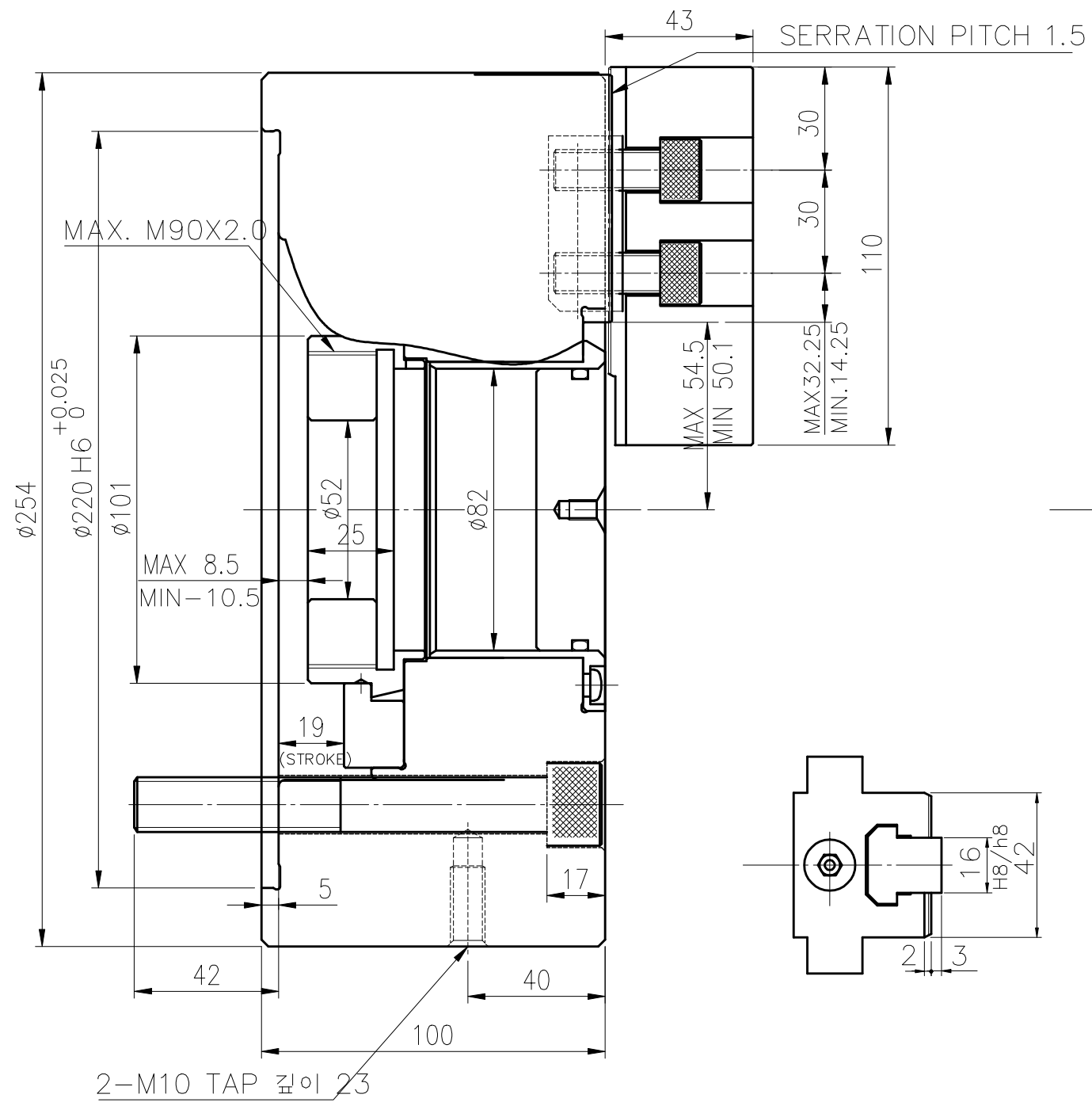
MAX M75 X P2.0



SPECIFICATION	
PLUNGER STROKE	17.5 mm
JAW STROKE (직경)	7.4 mm
PLUNGER 허용추력	3,596 kgf
최대 파악력	8,872 kgf
최고 회전수	5,000 r.p.m.
WEIGHT (SOFT JAW 포함)	23 kgf
G·D ² (SOFT JAW 포함)	0.57 kgf·m ²
최고회전중 파악력	2957 kgf
적용 CYLINDER	SH-17068
최대실질유압력	24 kg/cm ²

사	구	부	외
번	격	품	형
1	1	명	도
2	2	부	
3	3	속	
4	4	차	
5	5	용	
6	6	처	
7	7	리	
8	8	용	
9	9	기	
10	10	구	
11	11	비	
12	12	율	
13	13	100%	
14	14	100%	
15	15	100%	
16	16	100%	
17	17	100%	
18	18	100%	
19	19	100%	
20	20	100%	
21	21	100%	
22	22	100%	
23	23	100%	
24	24	100%	
25	25	100%	
26	26	100%	
27	27	100%	
28	28	100%	
29	29	100%	
30	30	100%	
31	31	100%	
32	32	100%	
33	33	100%	
34	34	100%	
35	35	100%	
36	36	100%	
37	37	100%	
38	38	100%	
39	39	100%	
40	40	100%	
41	41	100%	
42	42	100%	
43	43	100%	
44	44	100%	
45	45	100%	
46	46	100%	
47	47	100%	
48	48	100%	
49	49	100%	
50	50	100%	
51	51	100%	
52	52	100%	
53	53	100%	
54	54	100%	
55	55	100%	
56	56	100%	
57	57	100%	
58	58	100%	
59	59	100%	
60	60	100%	
61	61	100%	
62	62	100%	
63	63	100%	
64	64	100%	
65	65	100%	
66	66	100%	
67	67	100%	
68	68	100%	
69	69	100%	
70	70	100%	
71	71	100%	
72	72	100%	
73	73	100%	
74	74	100%	
75	75	100%	
76	76	100%	
77	77	100%	
78	78	100%	
79	79	100%	
80	80	100%	
81	81	100%	
82	82	100%	
83	83	100%	
84	84	100%	
85	85	100%	
86	86	100%	
87	87	100%	
88	88	100%	
89	89	100%	
90	90	100%	
91	91	100%	
92	92	100%	
93	93	100%	
94	94	100%	
95	95	100%	
96	96	100%	
97	97	100%	
98	98	100%	
99	99	100%	
100	100	100%	

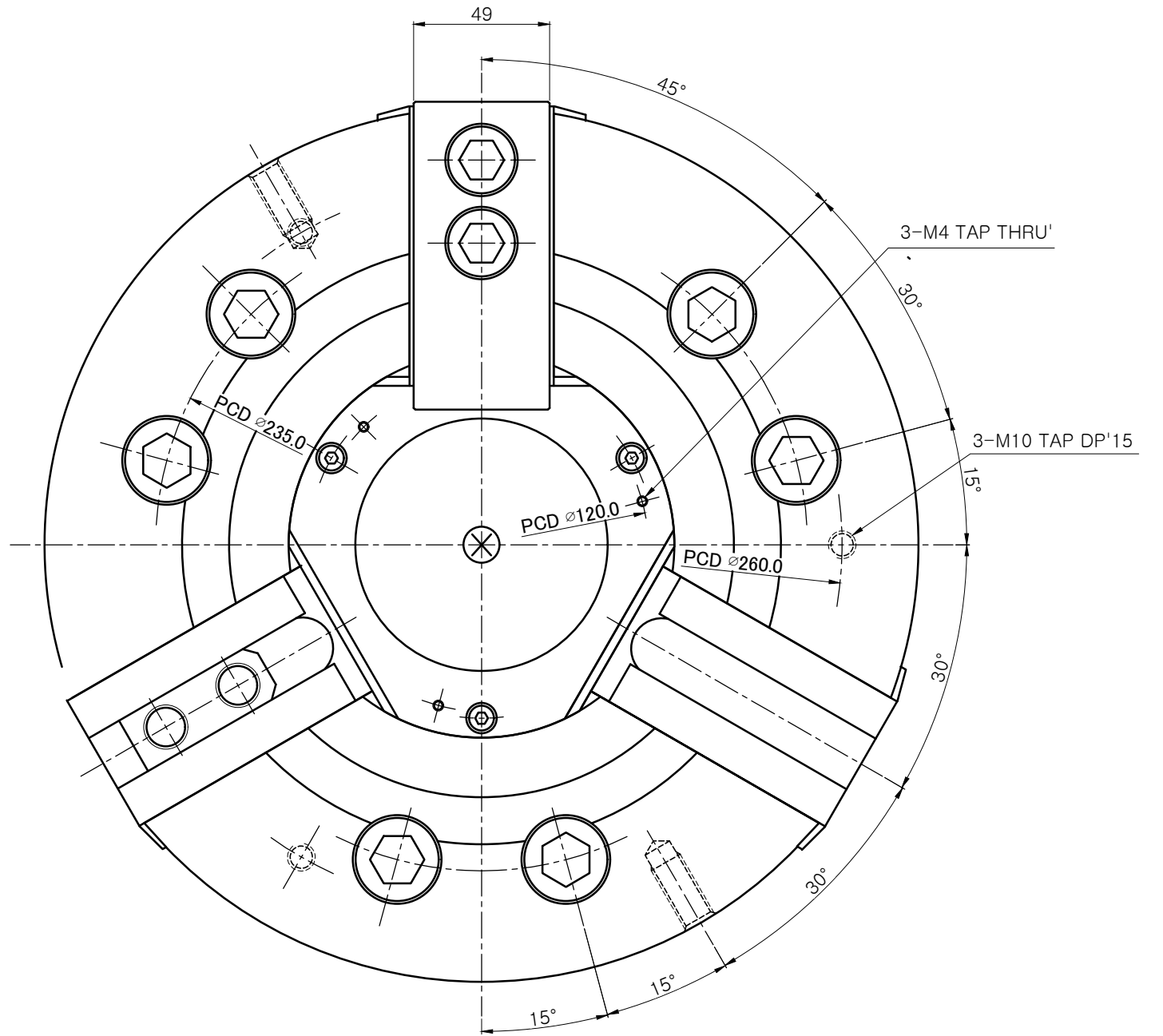
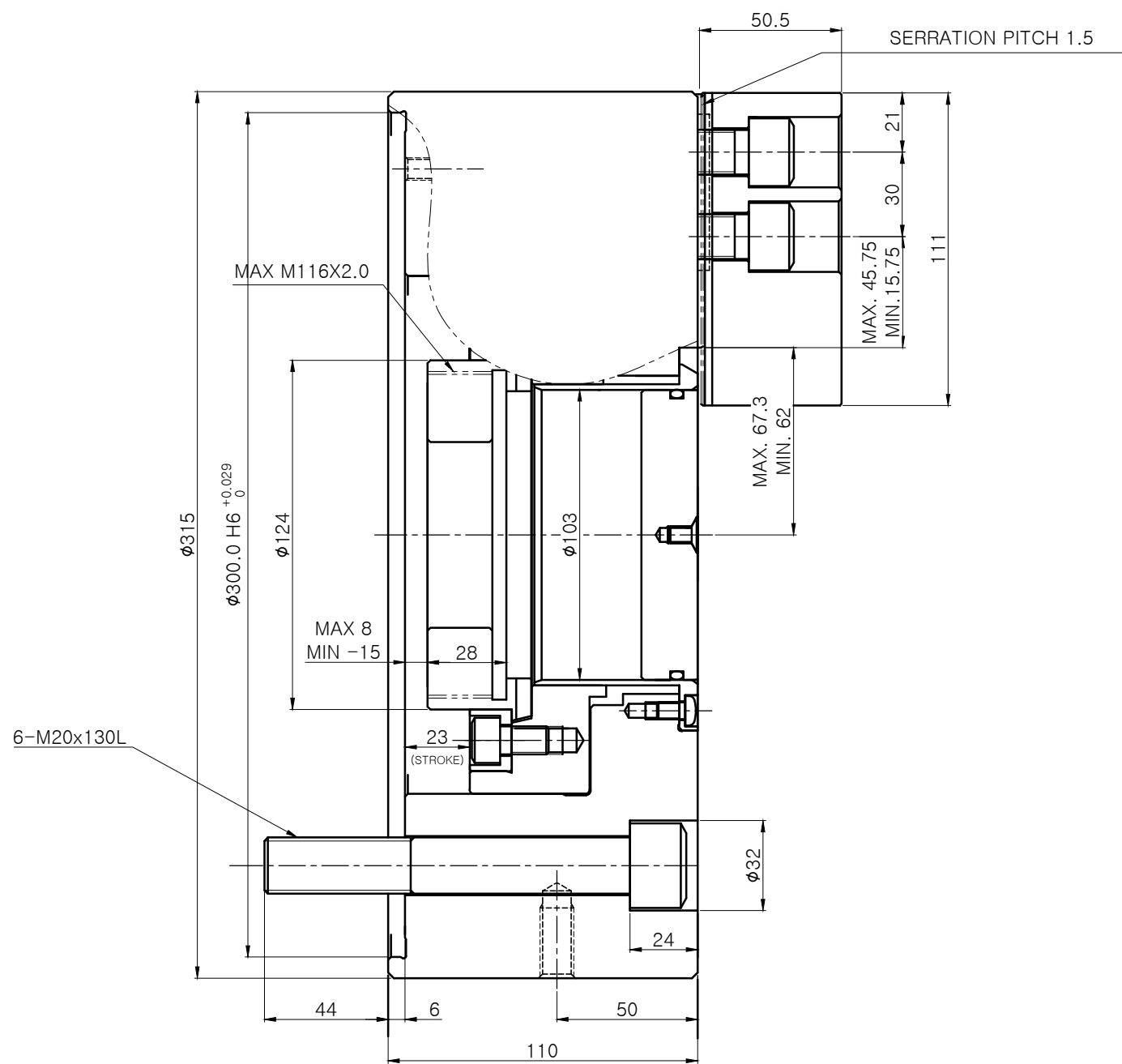
SAMCHULLY
www.samchully.com



2-M10 TAP 깊이 23

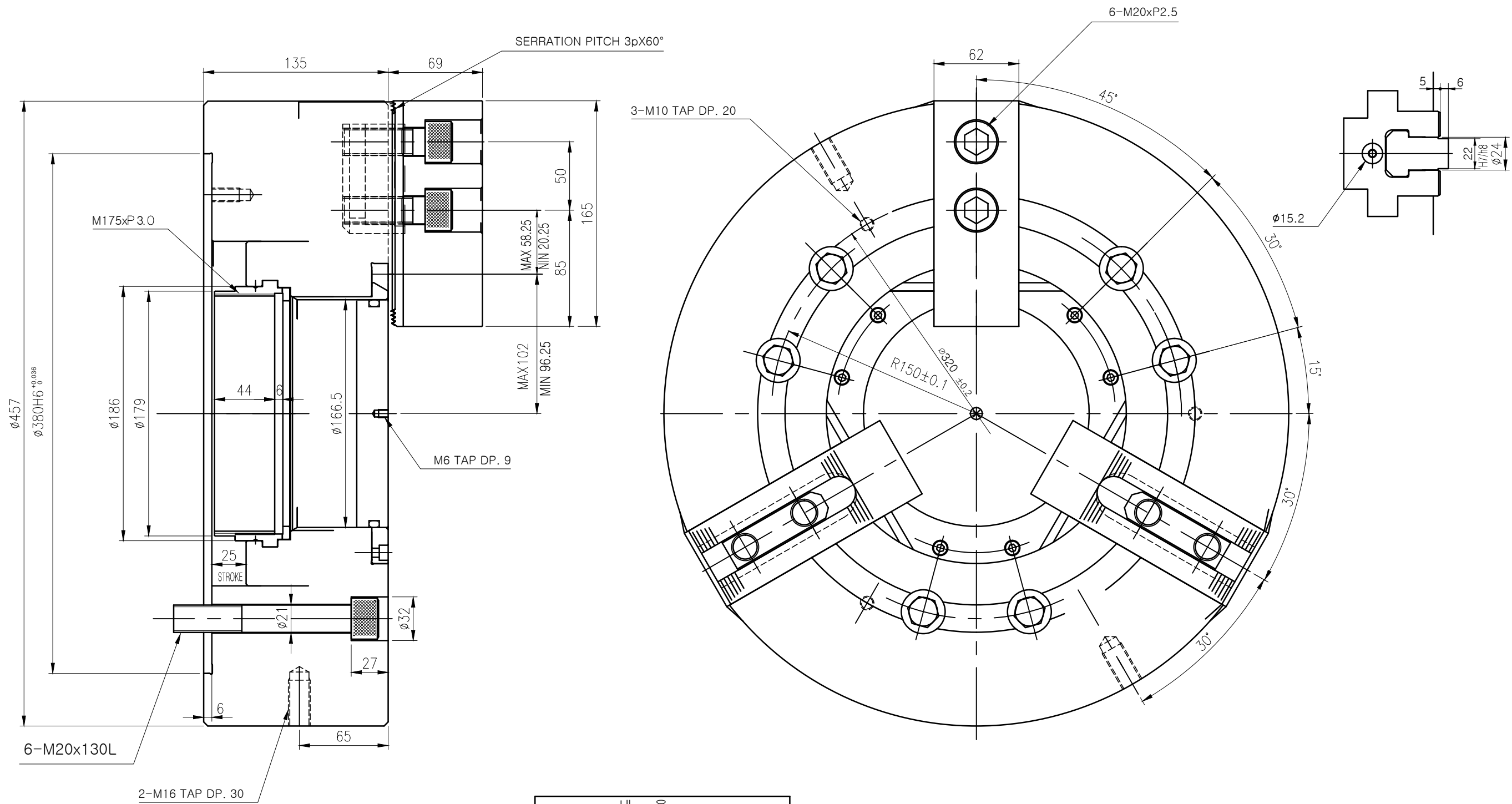
사 양	
PLUNGER STROKE	19 mm
JAW STROKE (직경)	8.8 mm
PLUNGER 허용추력	4976 kgf (49KN)
최대파악력	12848kgf (126.6KN)
최고회전수	4500 r.p.m.
중량(SOFT JAW 부착)	32 kgf
GD ² ()	1.26 kgf.m ²
최고 회전중 파악력	4200 kgf
사용 CYLINDER	SH19082
최대 설정 유압력	28 kg/cm ²

순번	-	규격	-	부품명	외형도
분류	초고속 중공 유압척			납품처	
도번	HH-210-WEB			사용처	
투상				날짜	
3각법				책임사점리 SAMCHULLY <small>MACHINERY CO.,LTD.</small>	
척도	1:1	승인	검도		



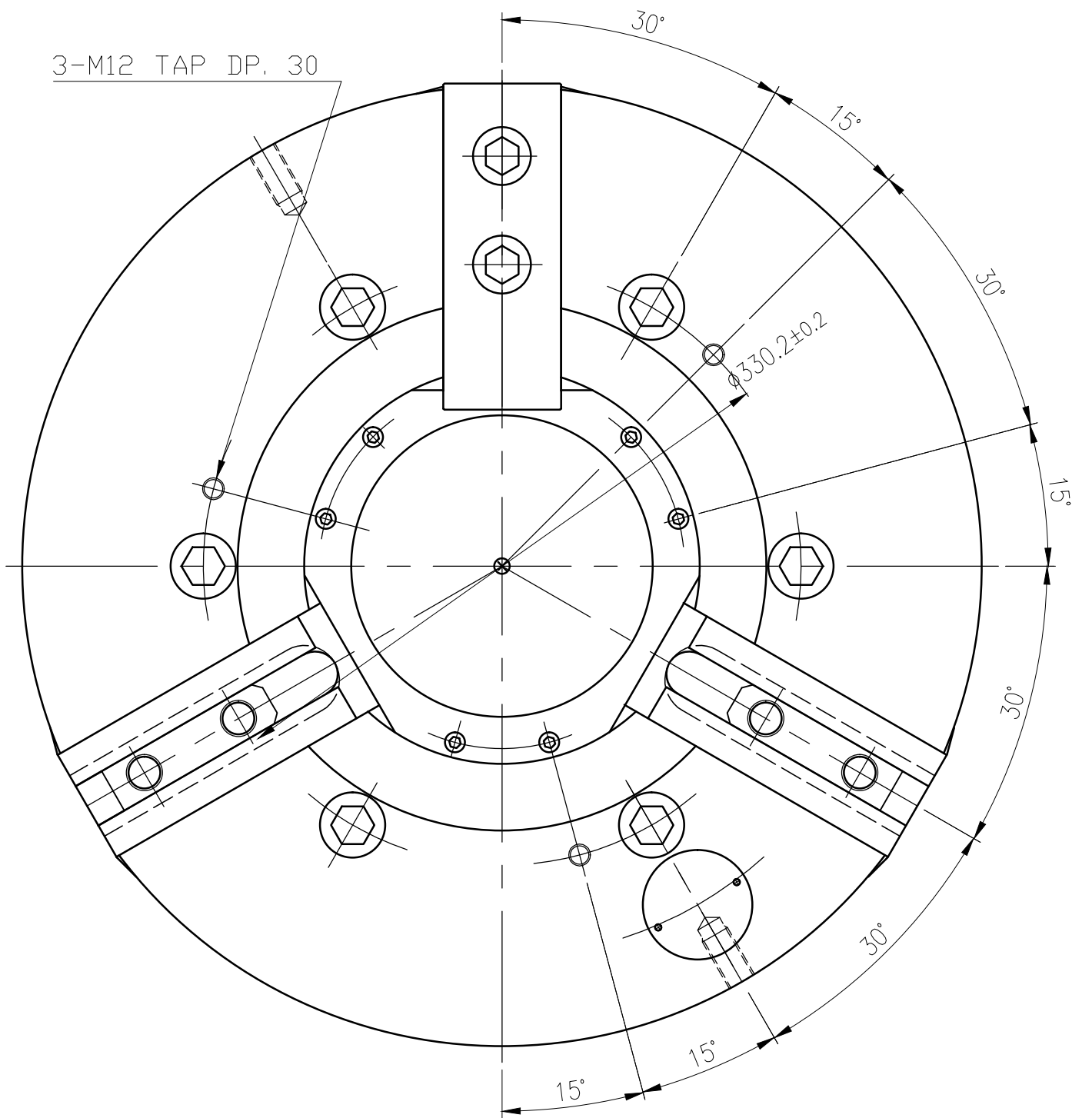
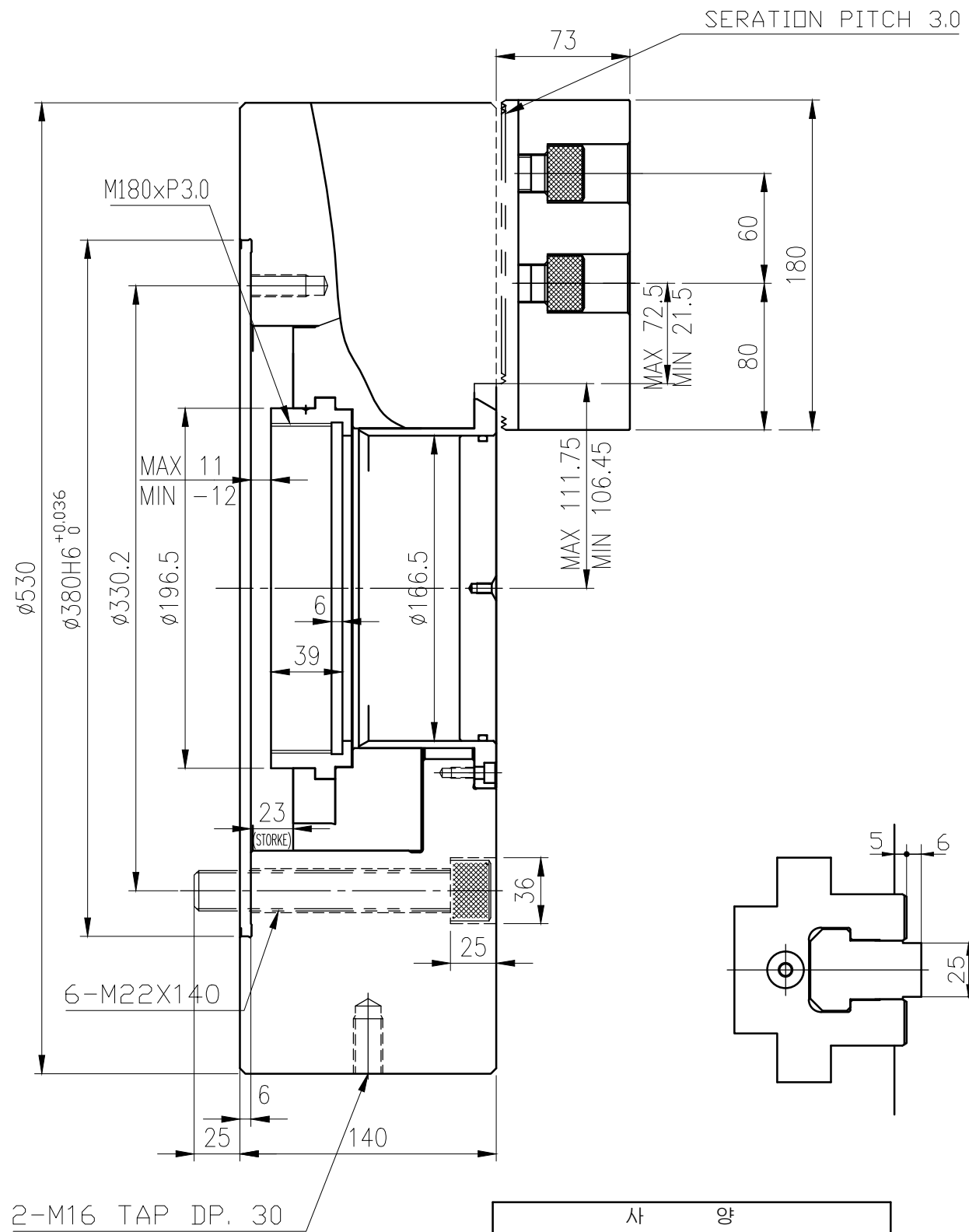
SPECIFICATION	
PLUNGER STROKE	23 mm
JAW STROKE (직경)	10.6 mm
PLUNGER 허용추력	5608kgf (55kN)
최대 파악력	14686kgf (144kN)
최고 회전수	3500 r.p.m.
WEIGHT (SOFT JAW 부착)	55.3 kgf
G·D ² (SOFT JAW 부착)	0.848 kgf·m ²
최고 회전중 파악력	6118 kgf
사용 CYLINDER	SH-21010
최대 설정 유압력	27.2 kg/cm ²

순번	0	규격	MH-212	부품명	외형도
분류	MH-212 WEB			분류	초고속중공유압척
도번	MH-212-WEB			부서	기술연구소
투상				날짜	2015. 06. 01.
3각법				이총재	
척도	이호범	이총재		승인	
1:1	승인	검도	설계		



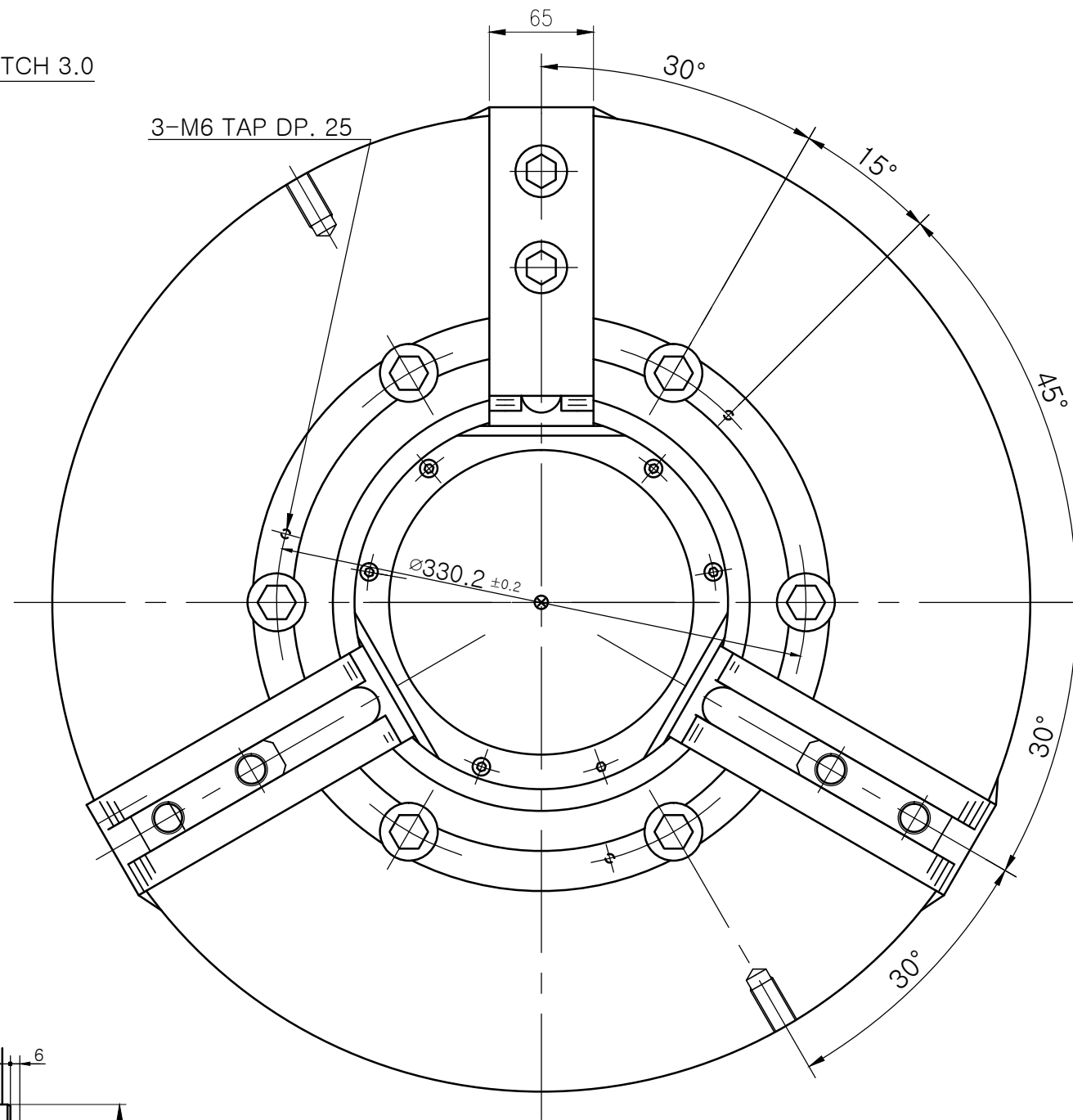
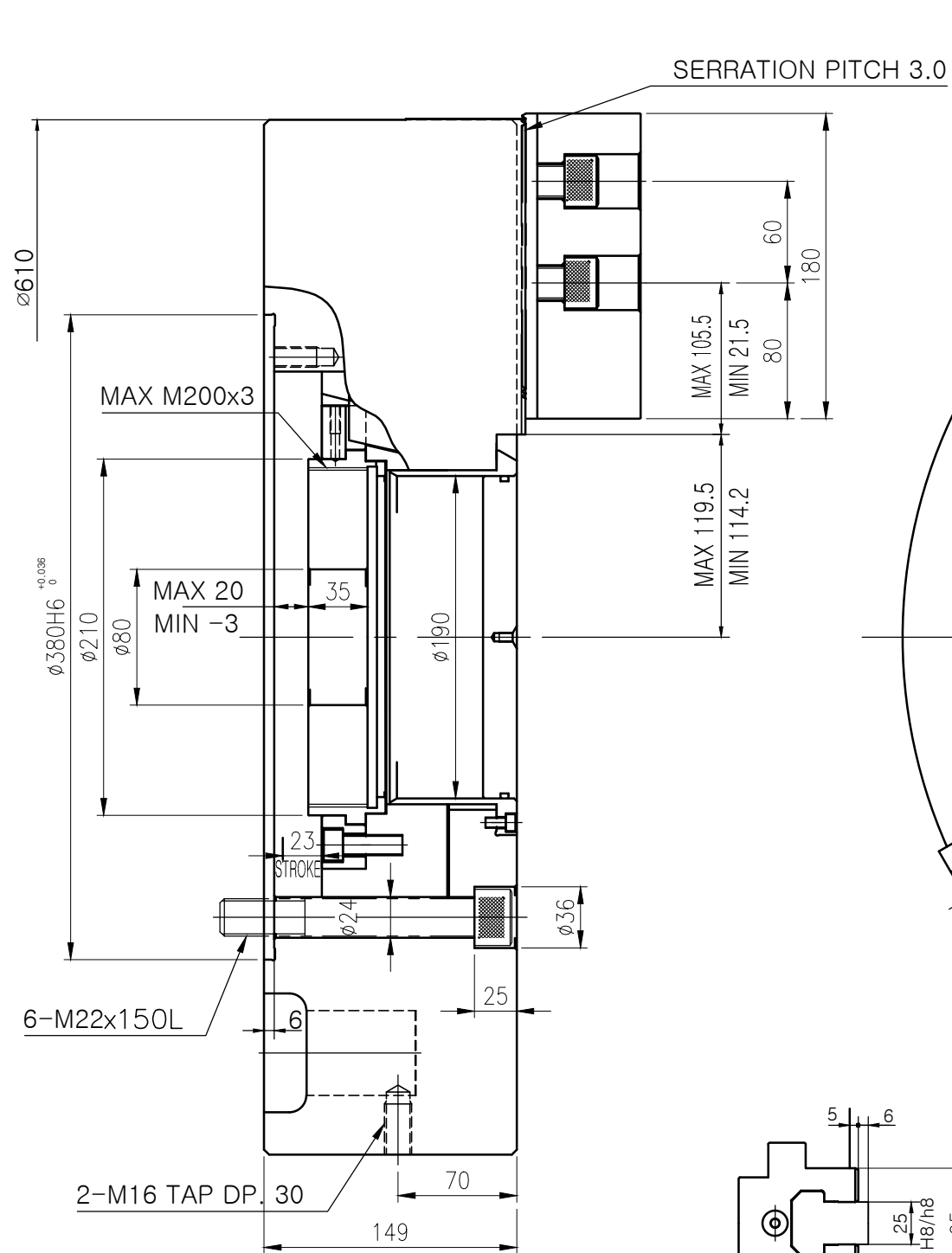
내 용		
PLUNGER STROKE	25	mm
JAW STROKE (직경)	11.5	mm
PLUNGER 허용추력	71KN	(7,240 kgf)
최대 파악력	180KN	(18,355 kgf)
최고 회전수	2,000	r.p.m
중량(SOFT JAW 부착)	170	kgf
GD ² (SOFT JAW 부착)	17.8	kgf·m ²
최고 회전중 파악력	72KN	(7,342 kgf)
사용 CYLINDER	SYHL-2816	
최대 설정 유압력	24	kg/cm ²

순 번	구 격	부 품 명	외 형 도
분 류	초고속 중공 유압척	납품처	
도 번	MH-218-WEB	사용처	
투 상		날 짜	
척 도	1:3	적성산업리 SAMCHULLY <small>MACHINERY CO., LTD.</small>	
	승 인	검 도	설 계



사 양		
PLUNGER STROKE	23	mm
JAW STROKE (직경)	10.6	mm
PLUNGER 허용추력	90KN (9,177 kgf)	
최대 파악력	220KN (22,460 kgf)	
최고 회전수	1700	r.p.m
중량(SOFT JAW 부착)	228	kgf
GD ² (SOFT JAW 부착)	34.7	kgf.m ²
최고 회전중 파악력	90KN (9,214 kgf)	
사용 CYLINDER	SYHL-2816	
최대 설정 유압력	32	kg/cm ²

순 번	—	규 격	—	부품명	외형도
분 류	초고속 중공 유압척			납품처	
도 번	MH-221-WEB			사용처	
투 상				날 짜	
3각법					
척 도	1:4				
	승 인	검 도	설 계		



사 양	
PLUNGER STROKE	23 mm
JAW STROKE (직경)	10.6 mm
PLUNGER 허용추력	90KN (9,177 kgf)
최대 파악력	234KN (23,861 kgf)
최고 회전수	1400 r.p.m
중량(SOFT JAW 부착)	293 kgf
GD ² (SOFT JAW 부착)	66.4 kgf·m ²
최고 회전중 파악력	78KN (7,954 kgf)
사용 CYLINDER	SH-39024
최대 설정 유압력	16.1 kg/cm ²

순번	-	규격	-	부품명	외형도
분류	초고속 중공 유압척			납품처	
도번	MH-224-WEB			사용처	
투상				날짜	
3각법				최성삼전리 SAMCHULLY <small>MACHINERY CO., LTD.</small>	
척도	1:4	승인	검도		