

# HCH 3-Jaw Open Center Chuck (110mm - 450mm)



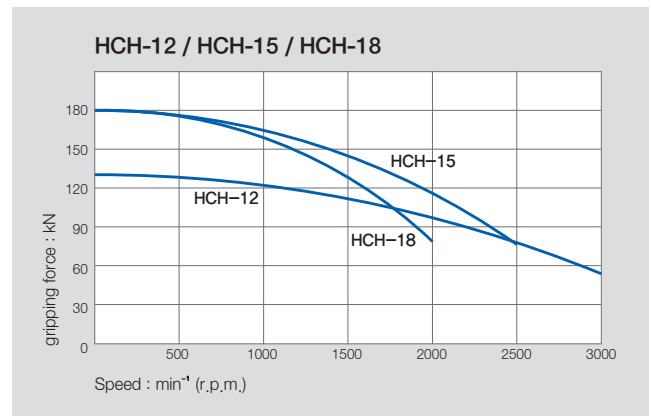
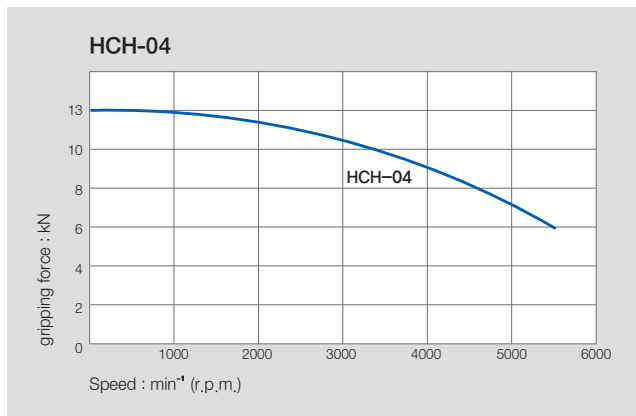
## Application / Benefits

For work requiring a through-hole

## Technical features

Wedge hook style chuck with high gripping force

## ACTUAL GRIPPING FORCE DIAGRAM



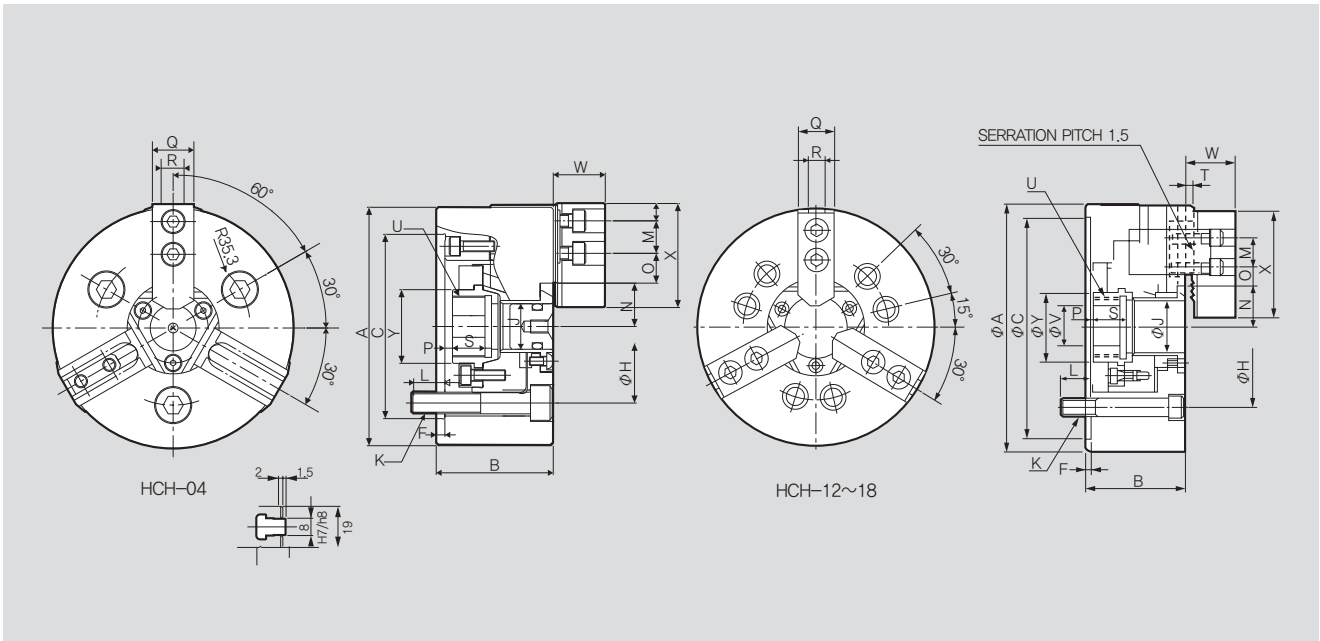
※ When using taller heavier jaw or clamping on a bigger diameter reduce draw pull rotating speed accordingly.

## SPECIFICATIONS

	HCH-04	HCH-12	HCH-15	HCH-18
Thru Hole Dia. [mm]	21	78	117.5	117.5
Grip Dia. Max [mm]	110	304	381	450
Grip Dia. Min [mm]	5	19	30	30
Jaw Stroke Dia. [mm]	4.2	10.6	10.6	10.6
Plunger Stroke [mm]	6.5	23	23	23
Max. Permissible Input Force [kN(kgf)]	8(800)	49(4997)	71(7240)	71(7240)
Max. Static Gripping Force [kN(kgf)]	13(1350)	129(13150)	180(18355)	180(18355)
Max. r.p.m. [min <sup>-1</sup> ]	5500	3000	2500	2000
Weight [kg]	3.7	63	120	164
Moment of inertia [N · m <sup>2</sup> (kg · m <sup>2</sup> )]	0.2(0.024)	29.71(3.03)	89.41(9.09)	174.6(17.8)
Operating Cylinder	HYH-0933	SH-19082	SH-25011	SH-25011
Max. Hydraulic Pressure [MPa(kgf/cm <sup>2</sup> )]	2.2(22.4)	2.3(23.5)	2.3(23.5)	2.3(23.5)
Operating Hard Jaw	HB04A1	HB12B1	HB15A1	HB15A1
KITAGAWA® Model	B-04	B-12	B-15	B-18

※ Specifications are subject to change without notice.

※ Samchully Machinery Co., Ltd. is no longer an OEM manufacturer for Kitagawa® Iron Works Co., Ltd.



※ It is recommended to grease chucks at least twice a day in order to maximize longevity.

## DIMENSIONS

	HCH-04	HCH-12	HCH-15	HCH-18
$\Phi A$	110	304	381	450
B	54	110	133	133
$\Phi C(H6)$	85	220	300	380
F	4	6	6	6
H	70.6	171.4	235	235
$\Phi J$	21	78	117.5	117.5
K	3-M10	6-M16	6-M20	6-M20
L	15.5	23	50	30
M	15	30	43	43
N max.	20	58	82	82
N min.	17.9	52.7	76.7	76.7
O max.	14.25	48.75	43.75	78.25
O min.	6.75	12.75	18.25	18.25
P max.	3.5	8	11	11
P min.	-3	-15	-12	-12
Q	19	49	62	62
R	8	18	22	22
S	15	38	39	39
T	2	5	5	5
U max.	M28x1.5	M88x2.0	M130x2.0	M130x2.0
$\Phi V$	10	50	60	60
W	24	54	70	70
X	48	129	165	165
$\Phi Y$	34	96	139	139

※ Blank and machined draw-nuts are available.

## RELATED PRODUCT



# HCH 3-Jaw Open Center Chuck (530mm-800mm)



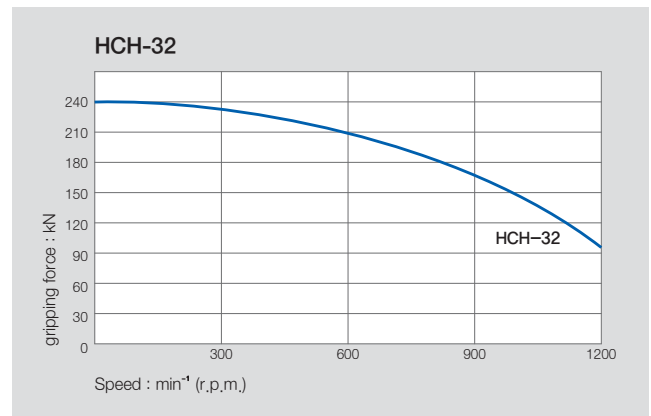
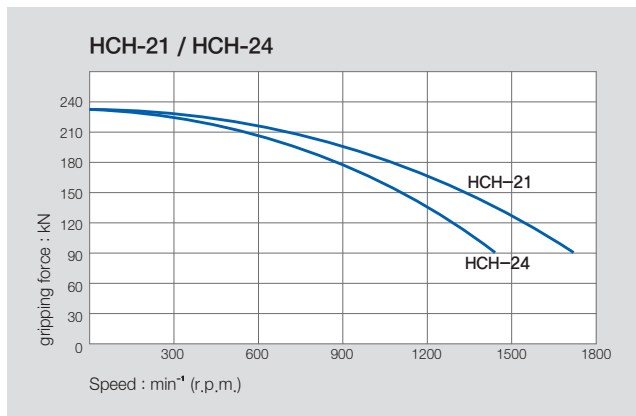
## Application / Benefits

For work requiring a through-hole  
Large diameter chucks offered for large work

## Technical features

Wedge hook style chuck with high gripping force

## ACTUAL GRIPPING FORCE DIAGRAM



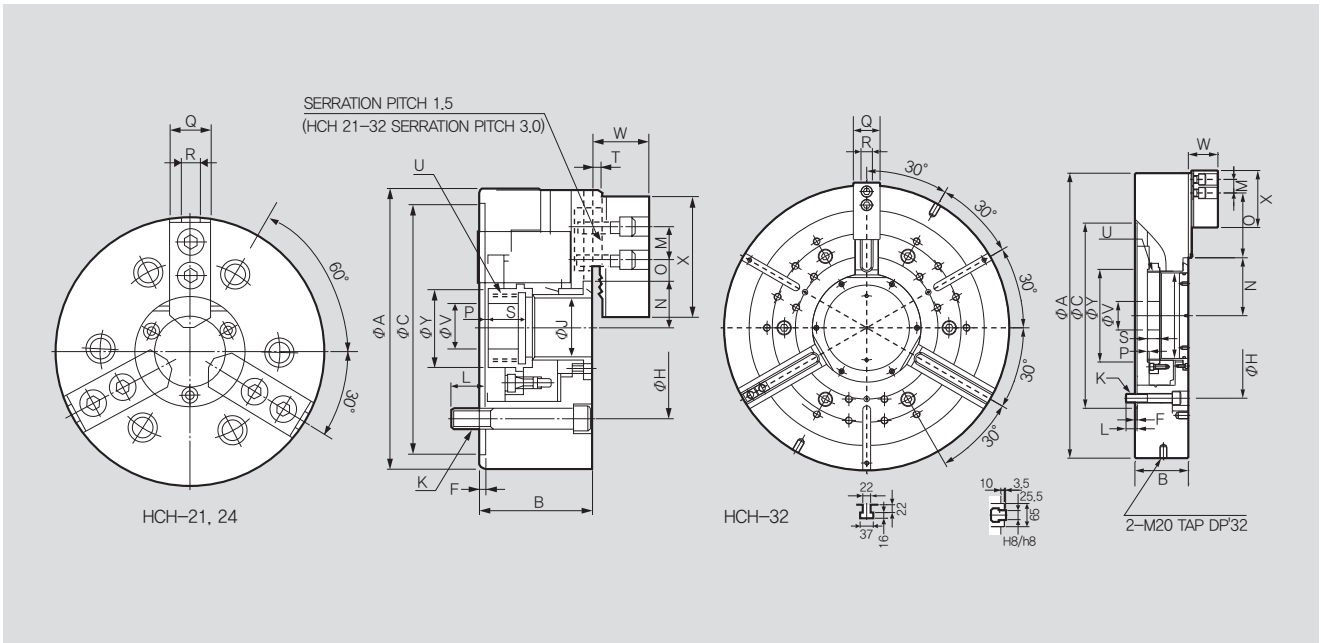
※ When using taller heavier jaw or clamping on a bigger diameter reduce draw pull rotating speed accordingly.

## SPECIFICATIONS

	HCH-21	HCH-24	HCH-32
Thru Hole Dia. [mm]	140	165	240
Grip Dia. Max [mm]	530	610	800
Grip Dia. Min [mm]	87	110	240
Jaw Stroke Dia. [mm]	10.6	10.6	18
Plunger Stroke [mm]	23	23	34
Max. Permissible Input Force [kN(kgf)]	90(9177)	90(9177)	100(10193)
Max. Static Gripping Force [kN(kgf)]	234(23861)	234(23861)	240(24464)
Max. r.p.m. [min <sup>-1</sup> ]	1700	1400	1200
Weight [kg]	235	293	530
Moment of inertia [N · m <sup>2</sup> (kg · m <sup>2</sup> )]	351.1(35.8)	651.2(66.4)	598.4(61)
Operating Cylinder	SH-25011	SYHL-2816	SYHL-2816
Max. Hydraulic Pressure [MPa(kgf/cm <sup>2</sup> )]	3.0(30.6)	3.0(30.6)	3.2(33.6)
Operating Hard Jaw	HB18B2	HB18B2	HB32B2
KITAGAWA® Model	B-21	B-24	-

※ Specifications are subject to change without notice.

※ Samcully Machinery Co., Ltd. is no longer an OEM manufacturer for Kitagawa® Iron Works Co., Ltd.



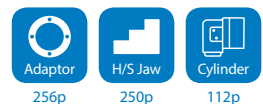
※ It is recommended to grease chucks at least twice a day in order to maximize longevity.

## DIMENSIONS

	HCH-21	HCH-24	HCH-32
$\Phi A$	530	610	800
B	140	149	150
$\Phi C(H6)$	380	380	520
F	6	6	6
H	330.2	330.2	463.6
$\Phi J$	140	165	240
K	6-M22	6-M22	6-M24
L	31	32	31
M	60	60	38
N max.	98.5	108	162.6
N min.	93.2	102.7	153.6
O max.	87.5	117.5	182
O min.	21.5	21.5	20
P max.	11	20	29
P min.	-12	-3	-5
Q	65	65	75
R	25	25	25.5
S	39	40	34.5
T	5	5	10
U max.	M155x3.0	M175x3.0	M250x3.0
$\Phi V$	80	80	80
W	72	72	83
X	180	180	160
$\Phi Y$	170	187	260

※ Blank and machined draw-nuts are available.

## RELATED PRODUCT



# Soft Jaw

Power Chuck Soft Jaw



## Application / Benefits

Works with HC.

Fig. 1

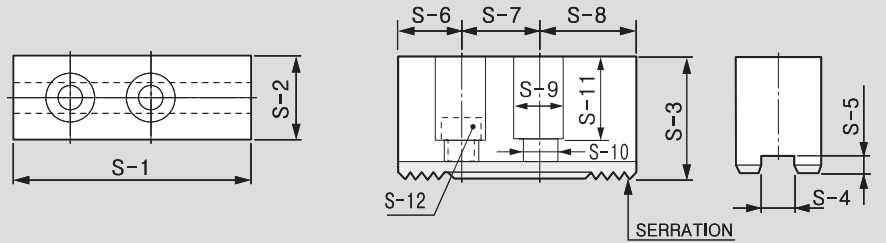


Fig. 2

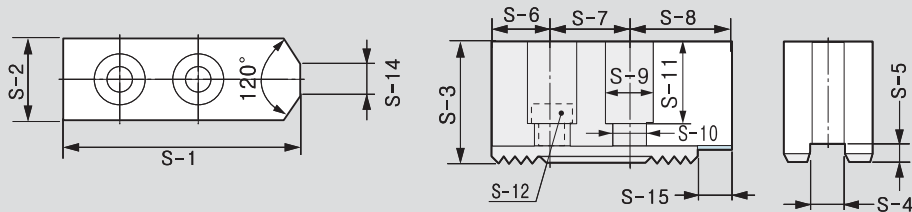
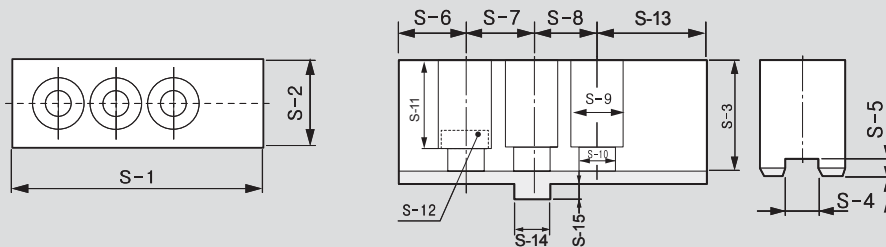


Fig. 3



※ See the product dimension Table on the right.

## DIMENSIONS

	SB04C1	SB05N1	SB06B1	SB08B1	SB10B1	SB12A1	SB12N1	SB15C1
Fig.	2	2	2	2	2	1	1	1
Serration Pitch	1.5x60°	1.5x60°	1.5x60°	1.5x60°	1.5x60°	1.5x60°	1.5x60°	1.5x60°
S-1	48	54	72	95	110	129	111	165
S-2	19	23	31	35	40	50	50	62
S-3	23	25	32	38	42	50	50	66
S-4	8	10	12	14	16	18	21	22
S-5	3	4	5	5	5	5	4	8
S-6	8	12	15	24	30	39	21	37
S-7	15	14	20	25	30	30	30	43
S-8	25	28	37	46	50	60	60	85
S-9	11	13.5	17	19	19	23	25	32
S-10	7	8.5	11	13	13	15	17	21
S-11	15	16.5	20	23	27	30	33	42
S-12	M6x16	M8x20	M10x30	M12x35	M12x35	M14x45	M16x40	M20x60
S-13	-	-	-	-	-	-	-	-
S-14	6	5	12	12	15	-	-	-
S-15	-	-	-	-	20	-	-	-
Corresponding	HCH-04	HS/HC-04,05	HS/HCH/HC-06, MH-206, UR-175	HCH/HC/HS-08, MH-208, UR-210	HCH/HC/HS-10, MH-210, UR-250	HC/HCH-12	HS-12, MH-212 UR-315	HCH-15 HCH-18

	SB15N1	SB15A2	SB18A2	SB32B2	SB32GB	SB32SB2	SB40GB	SB40SB2
Fig.	1	1	1	1	3	1	3	1
Serration Pitch	1.5x60°	3.0x60°	3.0x60°	3.0x60°	-	3.0x60°	-	3.0x60°
S-1	135	165	180	160	165	185	270	270
S-2	50	62	65	75	75	75	110	110
S-3	60	66	70	75	83	75	117	110
S-4	25.5	22	25	25.5	12.7	25.5	30	30
S-5	5	8	9	7	13	7.5	13	7.5
S-6	26	30	40	25	21.9	26.8	48.8	32.5
S-7	43	50	60	38	76.2	38.1	76.2	60
S-8	66	85	80	97	-	82	76.2	-
S-9	32	32	32	32	32	32	39	39
S-10	21	21	21	22	22	22	26	26
S-11	39	42	45	54	59	57	90	90
S-12	M20x55	M20x60	M20x60	M20	M20	M20	M24	M24
S-13	-	-	-	-	-	82	68.8	117.5
S-14	-	-	-	-	19.025	-	19.025	-
S-15	-	-	-	-	-	-	-	85
Corresponding	HC-15, HC-18	MH-218	HC/HCH-21, HC/HCH-24, MH-221,224	HCH-32 [Serration]	HC-32 [Groove]	HC-32S [Serration]	HC-40 [Groove] /50,55,63,70,80	HC-40 [Serration] /50,55,63,70,80

# Hard Jaw

Power Chuck Hard Jaw



## Application / Benefits

Works with HC.

Fig. 1

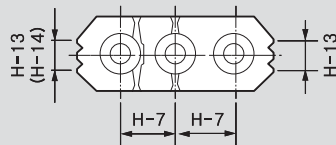


Fig. 2

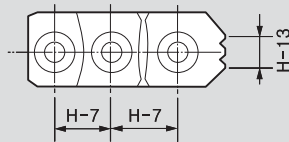
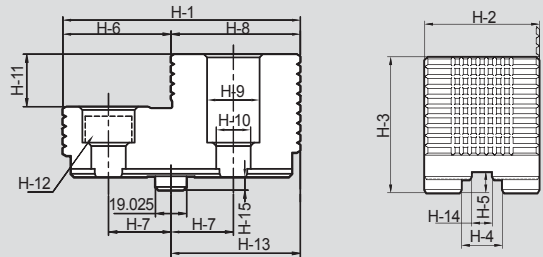
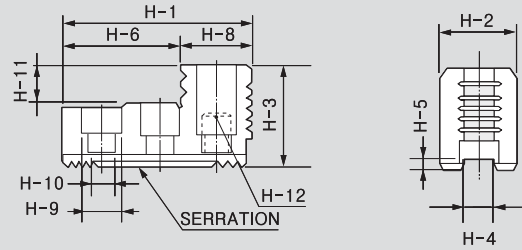
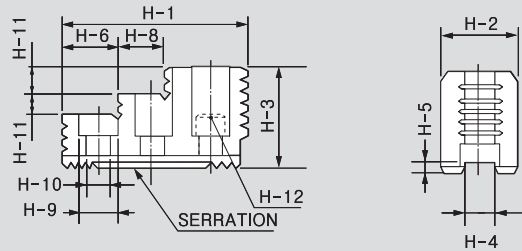
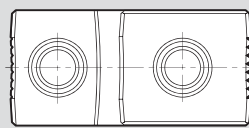


Fig. 3



※ See the product dimension Table on the right.

## DIMENSIONS

	HB04N1	HB06A1	HB08A1	HB10A1	HB12B1	HB12N1	HB15A1	HB15A2
Fig.	2	1	1	1	2	2	1	1
Serration Pitch	1.5x60°	1.5x60°	1.5x60°	1.5x60°	1.5x60°	1.5x60°	1.5x60°	3.0x60°
H-1	53	67	86	99.5	97.5	103	149	149
H-2	23	31	35	40	50	50	62	62
H-3	27.5	41	51	54	55	52	86	86
H-4	10	12	14	16	18	21	22	22
H-5	4	5	5	5	5	4	9	9
H-6	30.5	18	31	43	64.5	62.5	63	63
H-7	14	20	25	30	30	30	43	50
H-8	22.5	17	18	17	33	40.5	34	34
H-9	13.5	17	19	19	22	25	32	32
H-10	8.5	11	13	13	15	17	21	21
H-11	10	9	12	13	20	17	20	20
H-12	M8	M10	M12	M12	M14	M16	M20	M20
H-13	6	10	12	15	18	30	40	40
H-14	-	10	12	15	-	-	40	40
H-15	-	-	-	-	-	-	-	-
Corresponding	HS-04, HS-05	HC/HCH/HS-06, MH-206, UR-175	HC/HCH/HS-08, MH-208, UR-210	HC/HCH/HS-10, MH-210, UR-250	HC/HCH-12	HS-12, MH-212 UR-315	HCH-15, HCH-18	MH-218

	HB15N1	HB18B2	HB32B2	HB32GB	HB32SB2	HB40GB	HB40SB2	-
Fig.	1	2	2	3	2	3	2	-
Serration Pitch	1.5x60°	3.0x60°	3.0x60°	-	3.0x60°	-	3.0x60°	-
H-1	149	159.5	150	150	168	223	223	-
H-2	62	80	70	70	70	80	80	-
H-3	86	90	75	83	75	124	117	-
H-4	25.5	25	25.5	25	25.5	30	30	-
H-5	5	9	7	13	7.5	15	8	-
H-6	69	104.5	66	66	89	133	133	-
H-7	43	50	76.2	38.1	38.1	38.1	114.3	-
H-8	27	55	79	79	79	90	90	-
H-9	32	32	32	32	32	39	39	-
H-10	21	21	21	21	21	26	26	-
H-11	20	40	32	32	32	55	55	-
H-12	M20	M20	M20	M20	M20	M24	M24	-
H-13	43	55	-	79	-	83	-	-
H-14	38	-	-	12.7	-	-	-	-
H-15	-	-	-	8	-	7	-	-
Corresponding	HC-15, HC-18	HC/HCH-21, HC/HCH-24, MH-221,224	HCH-32 [Serration]	HC-32 [Groove]	HC-32 [Serration]	HC-40[Groove] 50,55,63,70,80	HC-40[Serration] 50,55,63,70,80	-



# T-NUT

Power Chuck T-Nuts



Application / Benefits  
Power Chuck T-Nut

Fig. 1

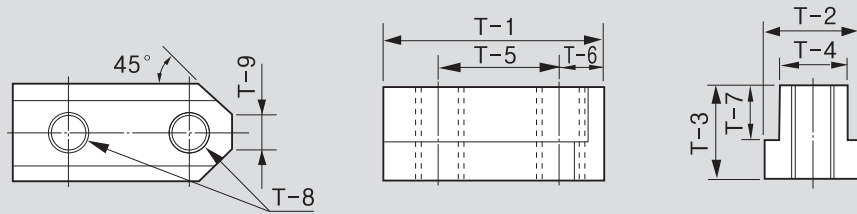


Fig. 2

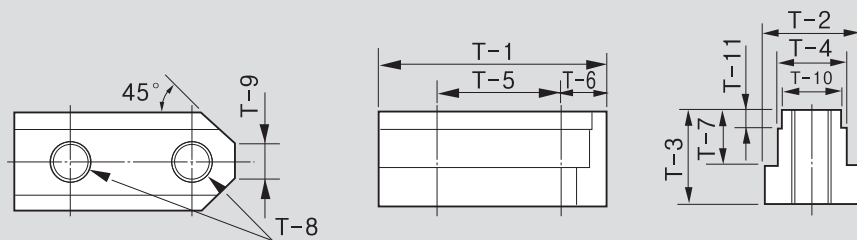
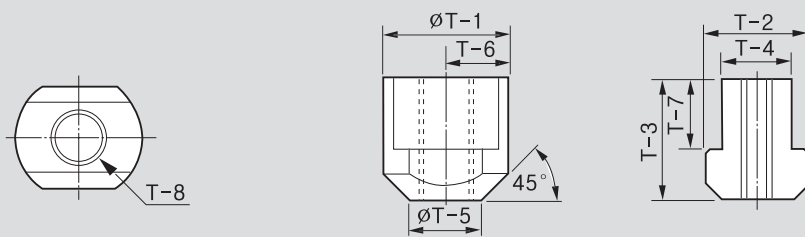


Fig. 3



※ See the product dimension Table on the right.

## DIMENSIONS

	TN-HCH-04	TN-HS-04, TN-HS-05	TN-HC-04	TN-HC-05	TN-HS-06	TN-HCH, TN-HC-06	TN-HS-08	TN-HCH, TN-HC-08	TN-HS-10	TN-HCH, TN-HC-10
Fig.	1	1	1	1	1	1	1	1	1	1
T-1	24.5	26	28	32	36	36.5	46.5	48	51	55
T-2	11.5	15	15	15	17.5	17.5	20.5	20.5	22.5	22.5
T-3	13.5	15	18	18	18.5	22.5	20.5	25.5	21.5	25.5
T-4	8	10	10	10	12	12	14	14	16	16
T-5	15	14	14	19	20	20	25	25	30	30
T-6	4.5	6	7	6	8.25	7.5	10.5	11	11	11
T-7	9	9.5	12.5	12.5	11	15	12	16	13	16
T-8	M6	M8	M8	M8	M10	M10	M12	M12	M12	M12
T-9	5	5	5	6	8	6	12	8	11	8
T-10	-	-	-	-	-	-	-	-	-	-
T-11	-	-	-	-	-	-	-	-	-	-
Corresponding	HCH Type of 4" Chuck	HS Type of 4", 5" Chuck	HC Type of 4" Chuck	HC Type of 5" Chuck	HS/MH/UR Type of 6" Chuck	HCH/HC Type of 6" Chuck	HS/MH/UR Type of 8" Chuck	HCH/HC Type of 8" Chuck	HS/MH/UR Type of 10" Chuck	HCH/HC Type of 10" Chuck

	TN-HS-12	TN-HCH, TN-HC-12	TN-HCH-15, TN-HCH-18	TN-HC-15, TN-HC-18	TN-MH-218	TNX-HC-21, TNX-HC-24	TN-HCH-32	TN-HC-32	TN-HC-40
Fig.	1	1	2	1	2	3	3	3	3
T-1	55.5	55.5	80	80	80	46	35	37	42
T-2	29.5	26.5	33.5	35	33.5	37.5	35	37.5	42.5
T-3	27.75	33.5	45.5	49	45.5	45	39.5	47.5	49.5
T-4	21	18	24	25.5	24	25	25.5	25.5	30
T-5	30	30	43	43	50	26.5	25	-	-
T-6	12	11.5	17	17	17	23	-	-	-
T-7	16.25	20	29	20	29	26	20.5	28.5	30.5
T-8	M16	M14	M20	M20	M20	M20	M20	M20	M24
T-9	13	12	11	11	16	-	-	-	-
T-10	-	-	22	-	-	-	-	-	-
T-11	-	-	7.5	-	-	-	-	-	-
Corresponding	HS/MH Type of 12" Chuck	HCH/HC Type of 12" Chuck	HCH Type of 15", 18" Chuck	HC Type of 5", 18" Chuck	MH-218	HC/HCF-21,24 HCH/HCHF- 21,24(H), MH-221(H)	HCH-32	HC-32	HC-40

※ TNX-HC-21-24, TNX-HC-32 require two T-nuts per jaw.

※ TNX-HC-40 require three T-nuts per jaw.



Samchully Grease  
Item No: SW-20

### Important for maintenance and safe operation.

- Fortified with molybdenum disulfide (MoS<sub>2</sub>)
- Maximum extreme-pressure protection
- Exceptional adhesion & cohesion characteristics
- Superior friction-reduction properties-protects against friction-related heat & wear
- Excellent resistance to water washout & spray off
- Reduces maintenance & downtime
- Reduces operating temperatures
- Extends equipment life.

# Adaptor Plates Power Chuck Adaptor Plates



**Application / Benefits**  
Power Chuck Adaptor Plates

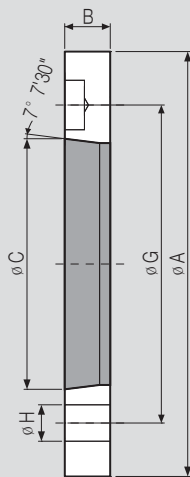


Fig. 1 : Direct Type

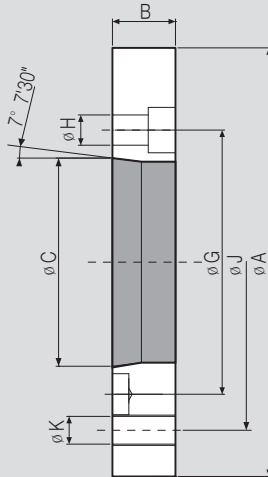


Fig. 2 : Indirect Type

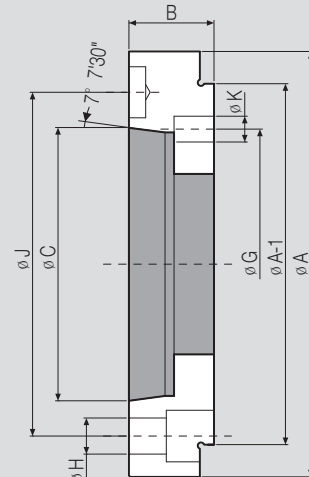


Fig. 3 : Plate Type

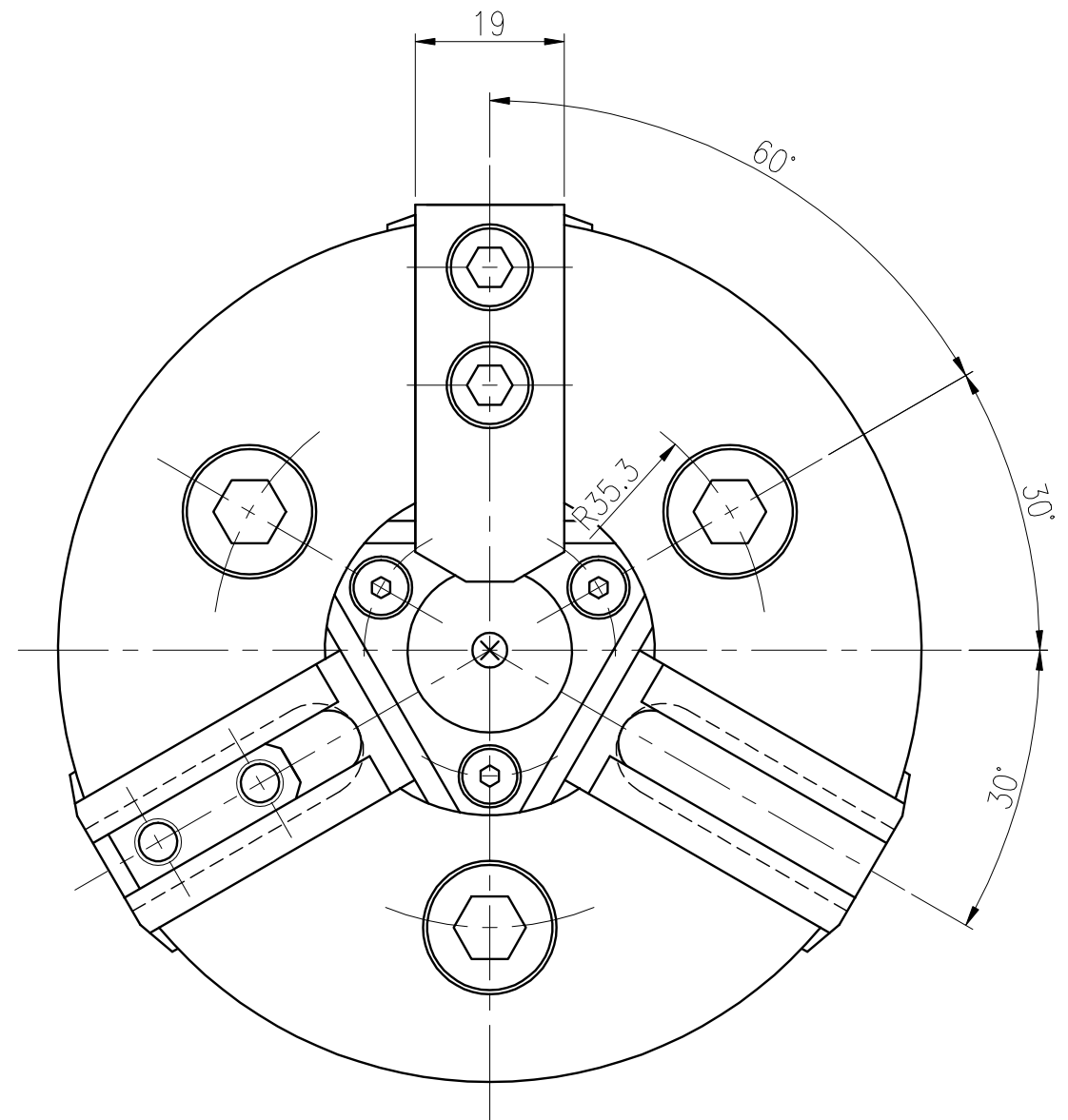
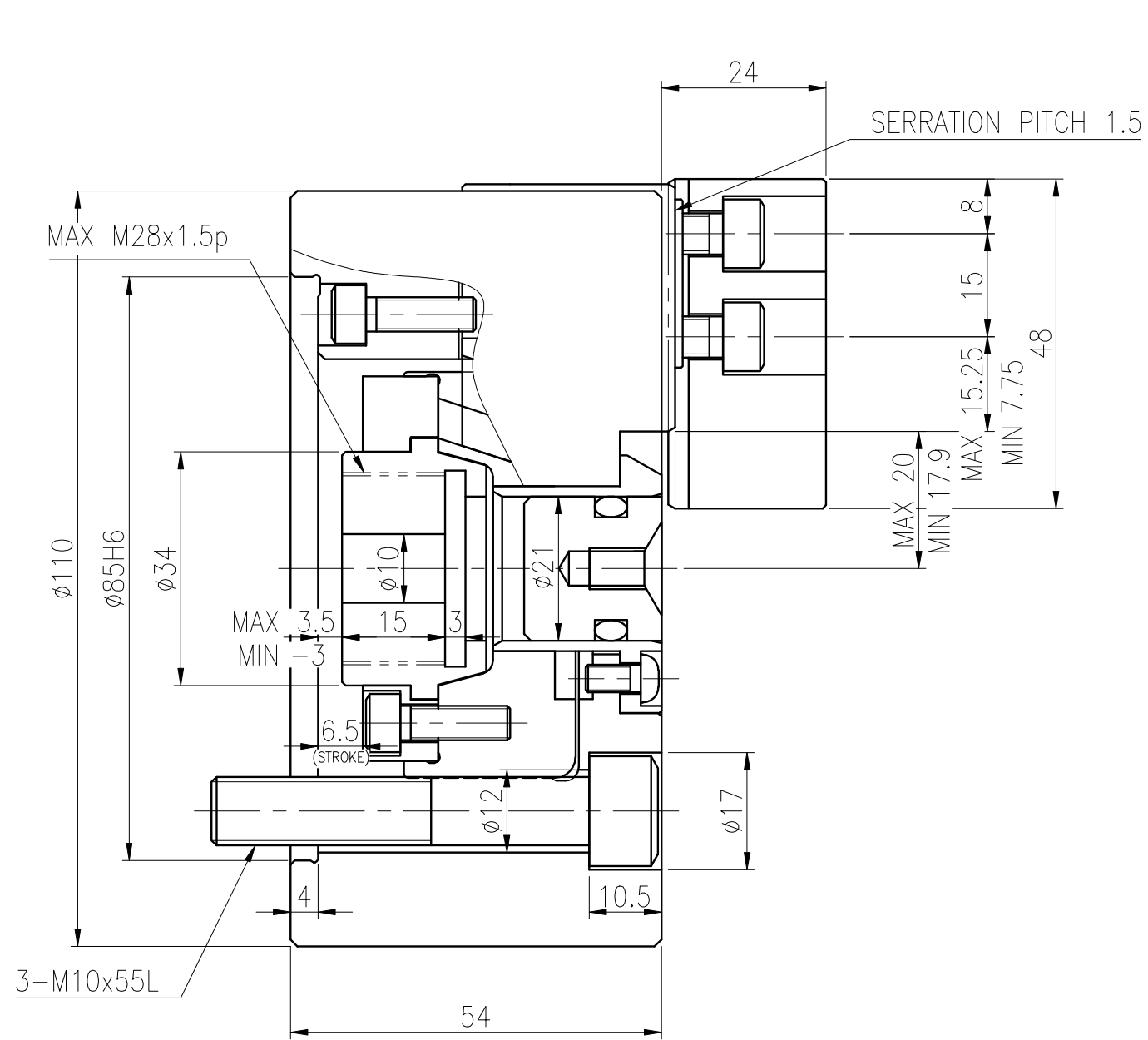
※ See the product dimension Table on the right.

## DIMENSIONS

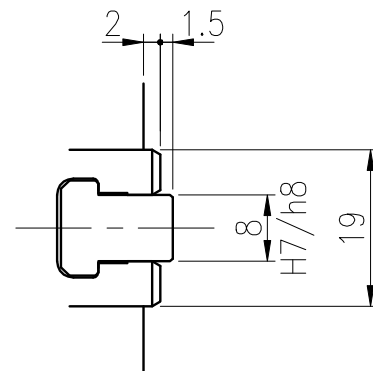
	Fig.	Spindle Nose	A	B	C	G	H	Corresponding	
AP06A05	1	A2-5	140	15	82.563	104.78	12	HS/HSL/HCH/HC/HCL-06, MH-206, UR-175	
APT06A05	1	A2-5	140	15	82.563	104.78	12	HST/HCT/HCLT-06, MHT-206	
AP08A06	1	A2-6	170	17	106.375	133.35	13.5	HS/HSL/HCH/HC/HCL-08, MH-208, UR-210	
APT08A06	1	A2-6	170	17	106.375	133.35	13.5	HST/HCT/HCLT-08, MHT-208	
APF08A06	1	A2-6	170	17	106.375	133.35	13.5	HSF/HCF/HCLF-08, MHF-208	
AP10/12A08	1	A2-8	220	18	139.719	171.45	18	HS/HSL/HCH/HC/HCL-10,12, MH-210, UR-250	
APT10/12A08	1	A2-8	220	18	139.719	171.45	17	HST/HCT/HCLT-10,12	
APF10/12A08	1	A2-8	220	18	139.719	171.45	18	HSF-10,12, HCF/HCLF-12	
AP212A08	1	A2-8	300	22	139.719	235	21	MH-212, UR-315	
AP212A11	1	A2-11	300	22	196.87	235	21	MH-212	
AP15A11	1	A2-11	300	22	196.87	235	21	HCH-15, HC-15,18	
APT15A11	1	A2-11	300	22	196.87	235	21	HCHT-15	
APF15A11	1	A2-11	300	22	196.87	235	21	HCHF-15, HCF-15,18	
AP18A11	1	A2-11	380	22	196.87	235	21	HCH-18	
APF18A11	1	A2-11	380	22	196.87	235	21	HCHF-18	
AP21/24A15	1	A2-15	380	27	285.775	330.2	24	HCH/HC-21,24, MH-221,224	

	Fig.	Spindle Nose	A	B	C	G	H	J	K	Corresponding
AP08A05	2	A2-5	170	25	82.563	104.78	12	133.35	M12	HS/ HST/ HSF/ HSL/ HCH/ HC/ HCT/ HCF/ HCL/ HCLT/ HCLF-08, MH/ MHT/ MHF-208
AP10/12A06	2	A2-6	220	25	106.375	133.35	13.5	171.45	M16	HS/ HST/ HSF/ HSL/ HCH/ HC/ HCT/ HCL/ HCLT-10,12, MH-210, HCF/ HCLF-12
AP15A08	2	A2-8	300	33	139.719	171.45	18	235	M20	HCH/ HCHT/ HCHF-15, HC/HCF-15,18
AP218A15	2	A2-15	380	60	285.775	330.2	24	300	M20	MH-218
AP21/24A11	2	A2-11	380	27	196.87	235	21	330.2	M22	HCH/ HC-21,24,MH-221,224
AP21/24A11	2	A2-11	380	42	196.87	235	22	330.2	M22	HCH/ HCHF/ HC/ HCF-21,24, MH-221,224
AP21/24A11	2	A2-11	380	42	196.87	235	22	330.2	M24	HC/HCF-32, HCH/HCHF/HC-21N,24N
AP21/24A15	2	A2-15	380	42	285.775	330.2	24	330.2	M22	HCH/ HC-21,24, MH-221,224
AP32A15	2	A2-15	380	42	285.775	330.2	26	330.2	M24	HC-32
AP32/40A11	2	A2-11	520	50	196.87	235	22	463.6	M24	HCH-32, HC-40, HC-50
AP32/40A15	2	A2-15	520	42	285.775	330.2	26	463.6	M24	HCH-32, HC-40, HC-50

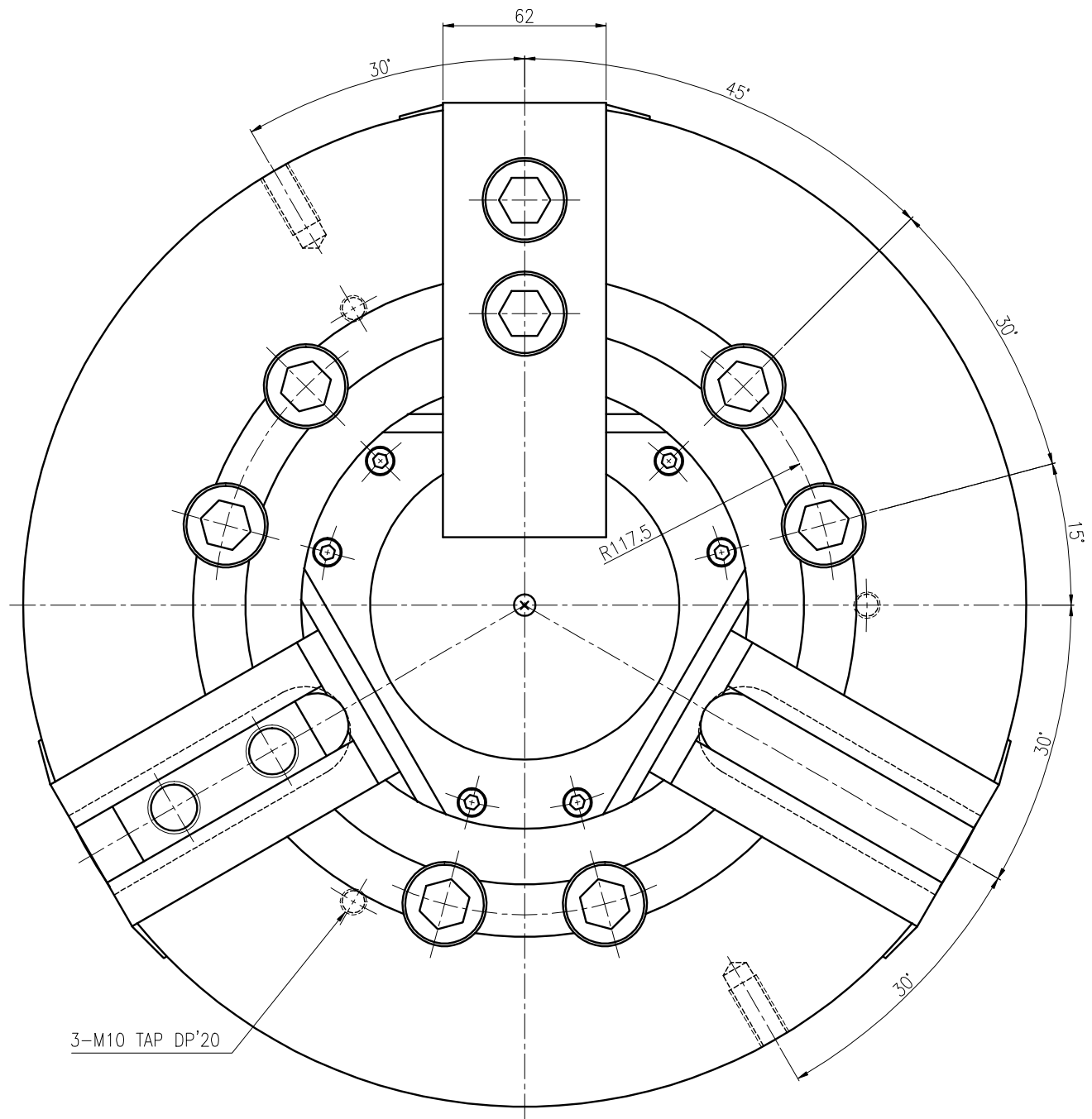
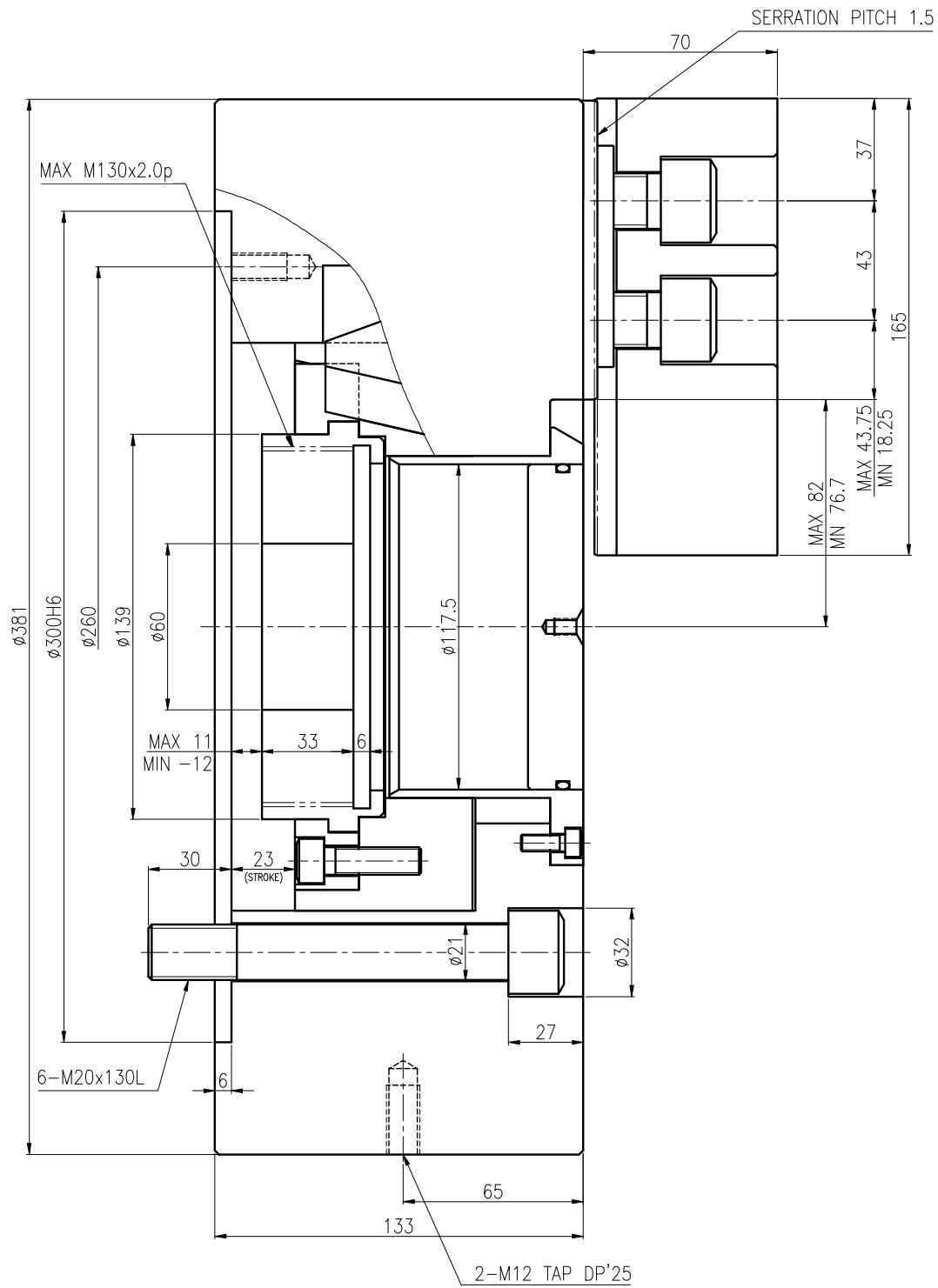
	Fig.	Spindle Nose	A	A-1	B	C	G	H	J	K	Corresponding
AP06A06	3	A2-6	165	140	33	106.375	133.35	14	104.78	M10	HS/ HSL/ HCH/ HC/ HCL-06, MH-206
AP08A08	3	A2-8	210	170	30	139.719	171.45	18	133.35	M12	HS/ HST/ HSF/ HSL/ HCH/ HC/ HCT/ HCF/ HCL/ HCLT/ HCLF-08, MH/ MHT/ MHF-208



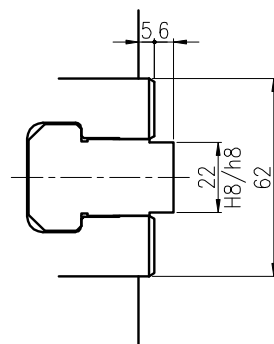
SPECIFICATION	
PLUNGER STROKE	6.5 mm
JAW STROKE (직경)	4.2 mm
PLUNGER 허용추력	800 kgf
최대 파악력	1,350 kgf
최고 회전수	5,500 r.p.m.
WEIGHT (SOFT JAW 포함)	3.7 kgf
G·D <sup>2</sup> (SOFT JAW 포함)	0.024 kgf·m <sup>2</sup>
최고회전중 파악력	180 kgf
적용 CYLINDER	HYH 0933
최대설정유압력	22.4 kg/cm <sup>2</sup>



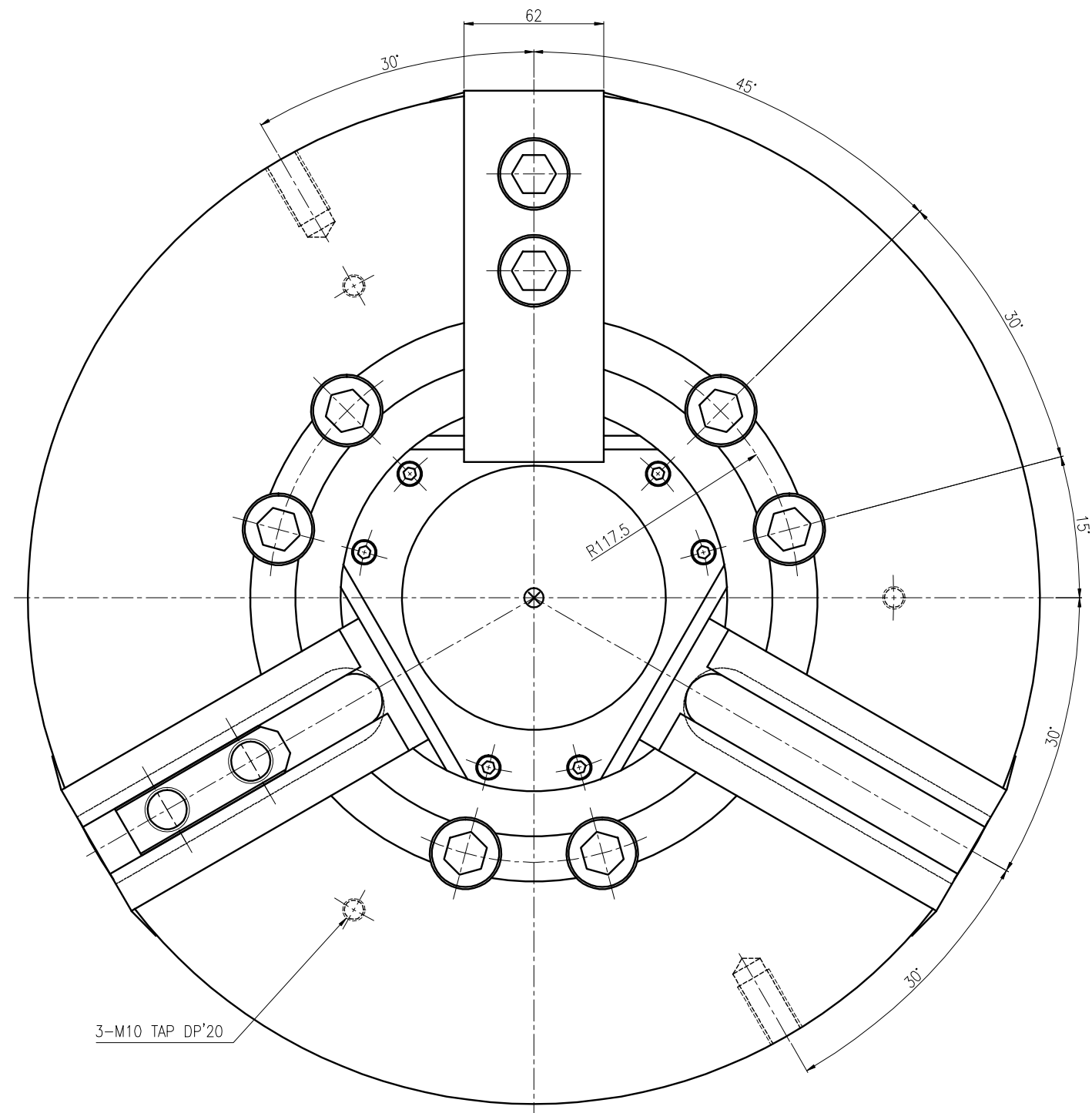
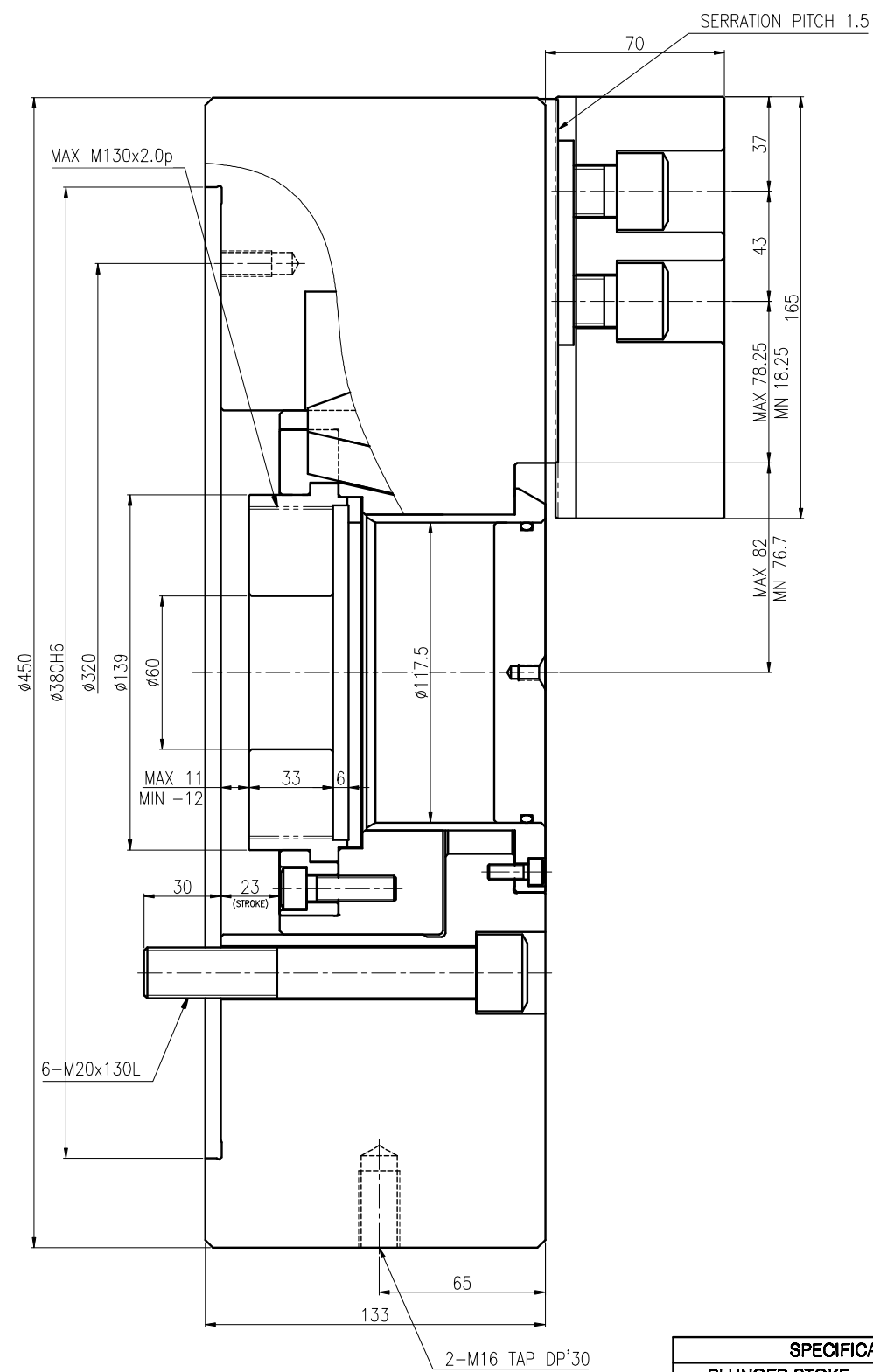
순번	-	규격	-	부품명	외형도
분류	고속 중공 유압척			납품처	
도번	HCH-04-WEB			사용처	
투상				날짜	
3각법				책임심리	
척도	1:1				
	승인	검도	설계		



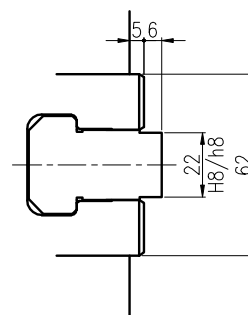
SPECIFICATION	
PLUNGER STROKE	23 mm
JAW STROKE (직경)	10.6 mm
PLUNGER 허용추력	7,240 kgf
최대 파악력	18,355 kgf
최고 회전수	2,500 r.p.m.
WEIGHT (SOFT JAW 포함)	120 kgf
G·D <sup>2</sup> (SOFT JAW 포함)	9.09 kgf·m <sup>2</sup>
최고회전중 파악력	6,118 kgf
적용 CYLINDER	SH-25011
최대설정유압력	23.5 kg/cm <sup>2</sup>



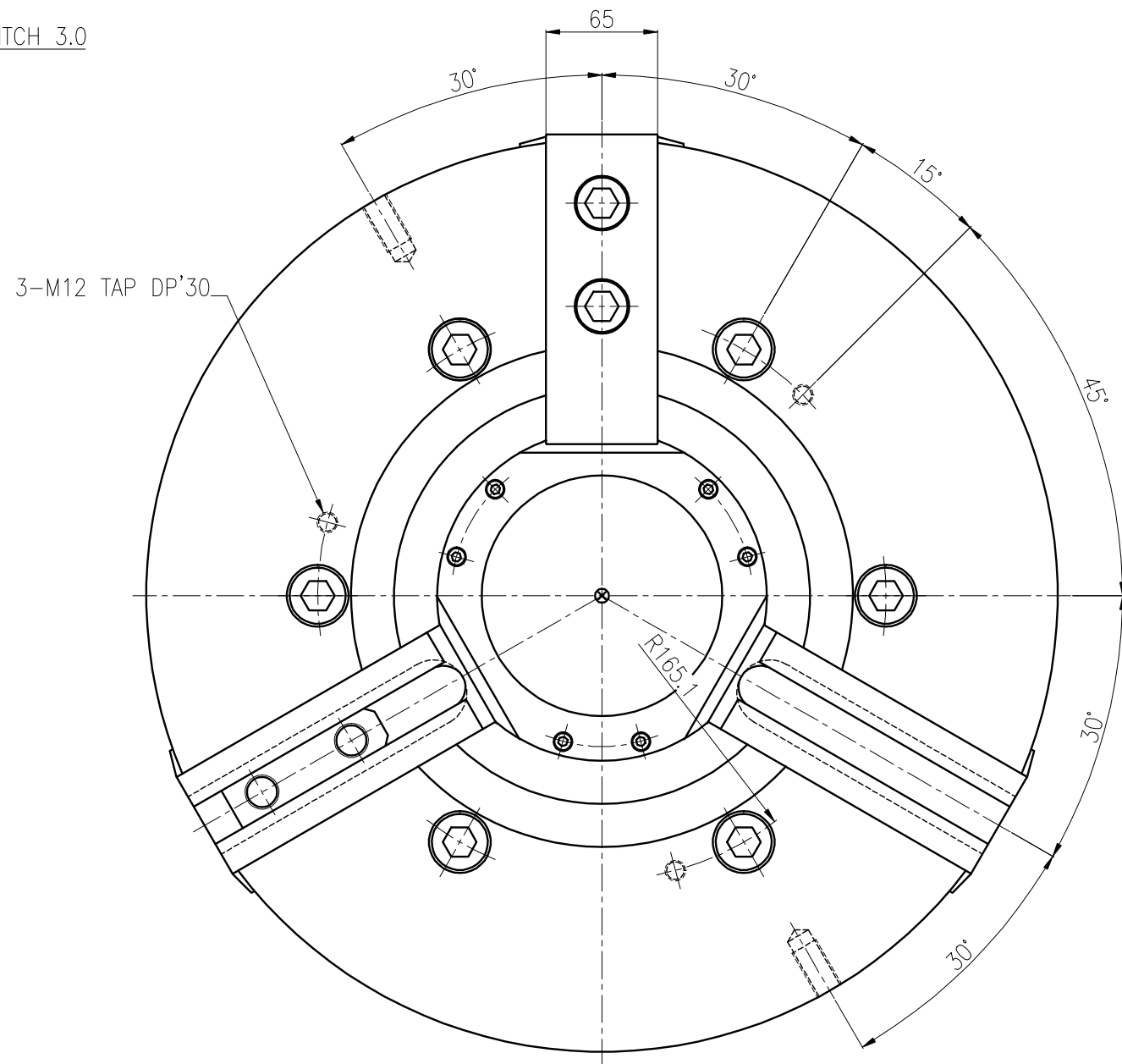
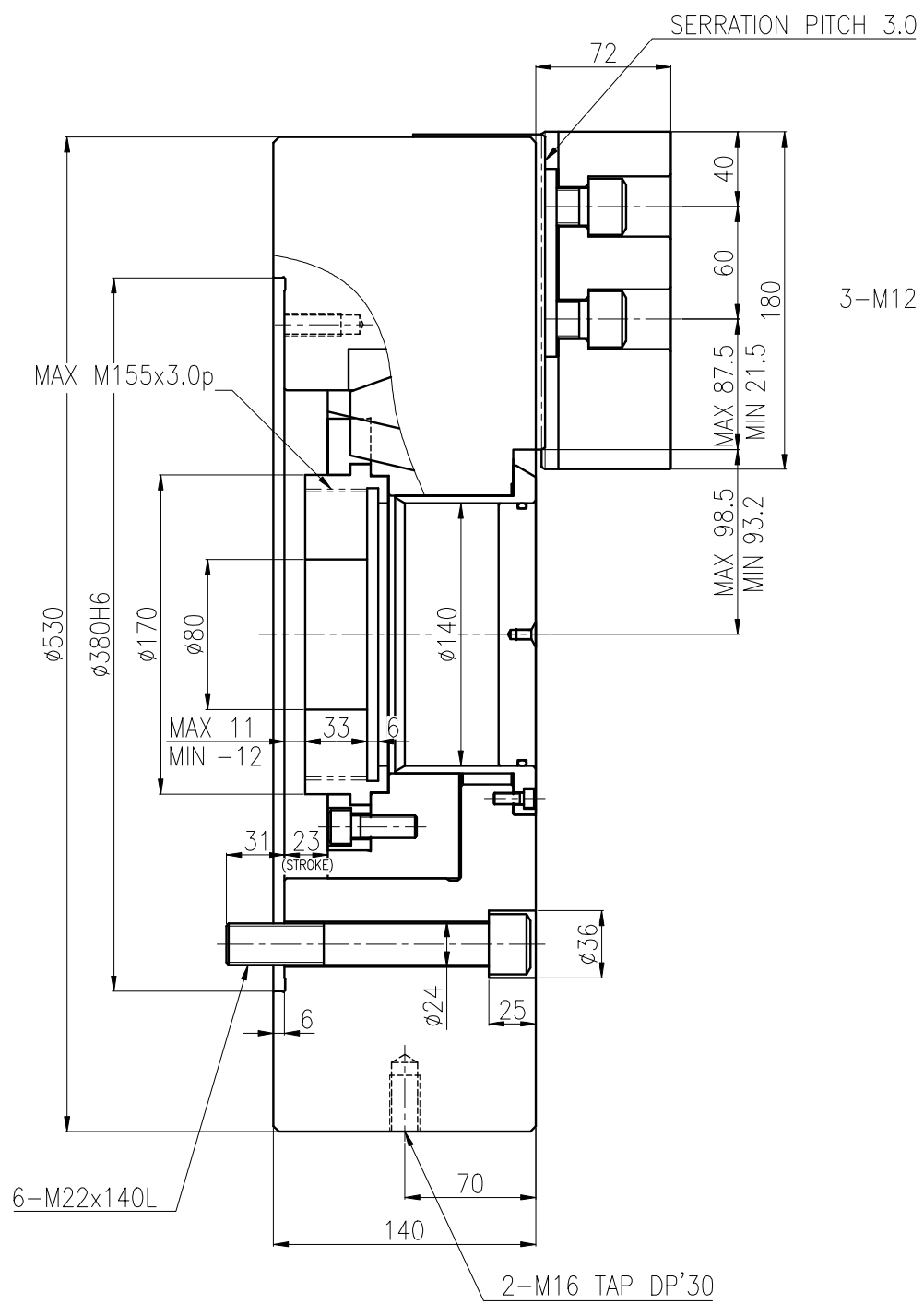
순번	규격	부품명	외형도
분류	고속 동공 유압력	남형제	
도번	HCH-15-WEB	사용제	
무상 3각법 적도 1:1	출입 경도 설계	남 작 적 삼 한 리 SAMCHULLY EQUIPMENT CO., LTD.	



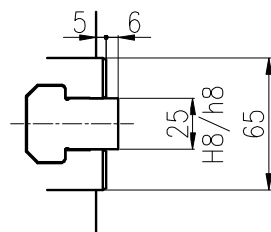
SPECIFICATION	
PLUNGER STROKE	23 mm
JAW STROKE (직경)	10.6 mm
PLUNGER 허용추력	7,240 kgf
최대 파악력	18,355 kgf
최고 회전수	2,000 r.p.m.
WEIGHT (SOFT JAW 포함)	164 kgf
G·D <sup>2</sup> (SOFT JAW 포함)	17.8 kgf·m <sup>2</sup>
최고회전중 파악력	7,342 kgf
적용 CYLINDER	SH-25011
최대설정유압력	23.5 kg/cm <sup>2</sup>



순번	규격	부품명	외형도
분류	고속 공공 유압력	납땀제	
도번	HCH-18-WEB	사용제	
부상 3각법		납 과	
비율	1:1	출원 정도 실제	AMCHULLY

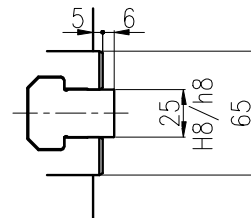
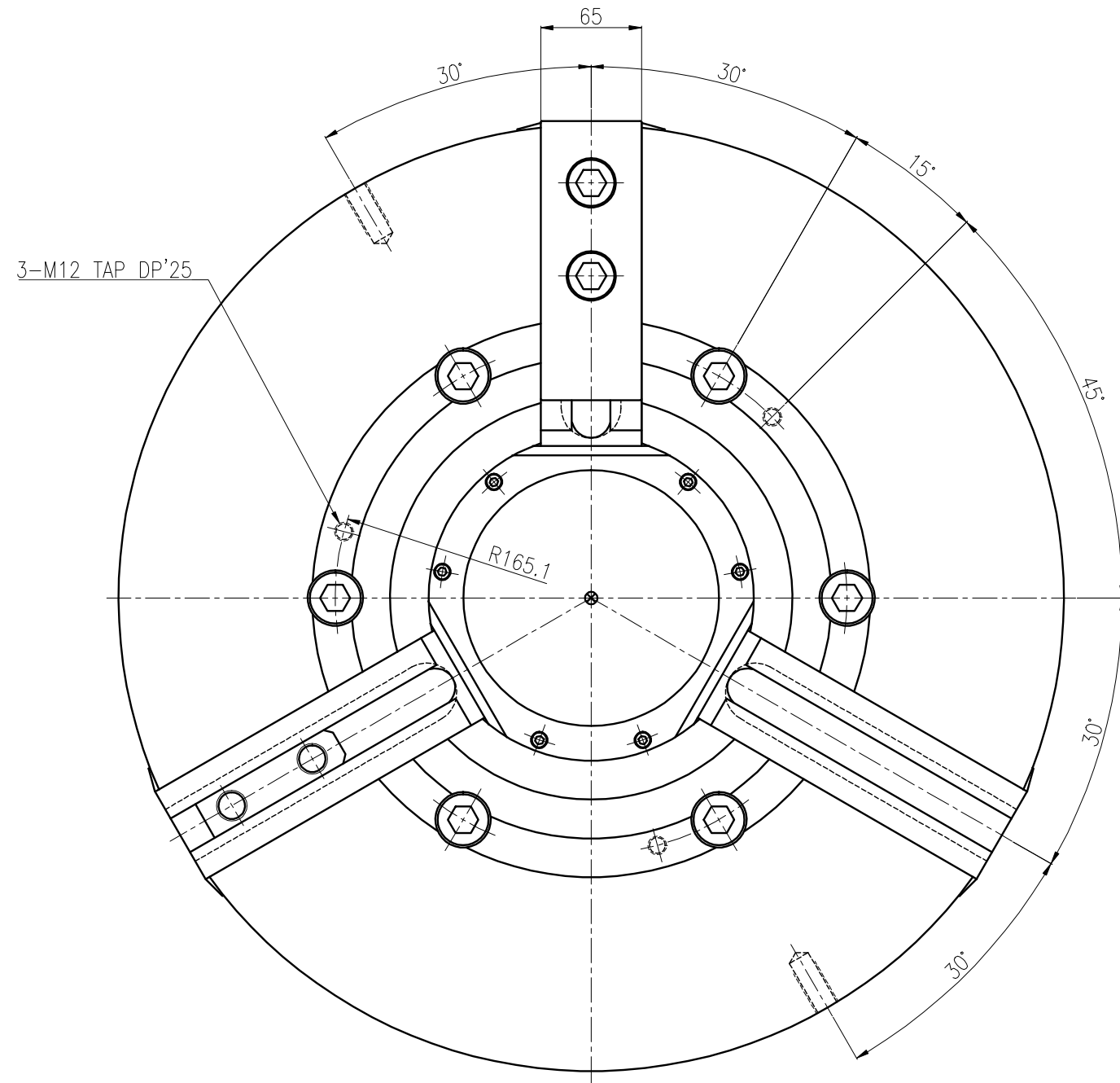
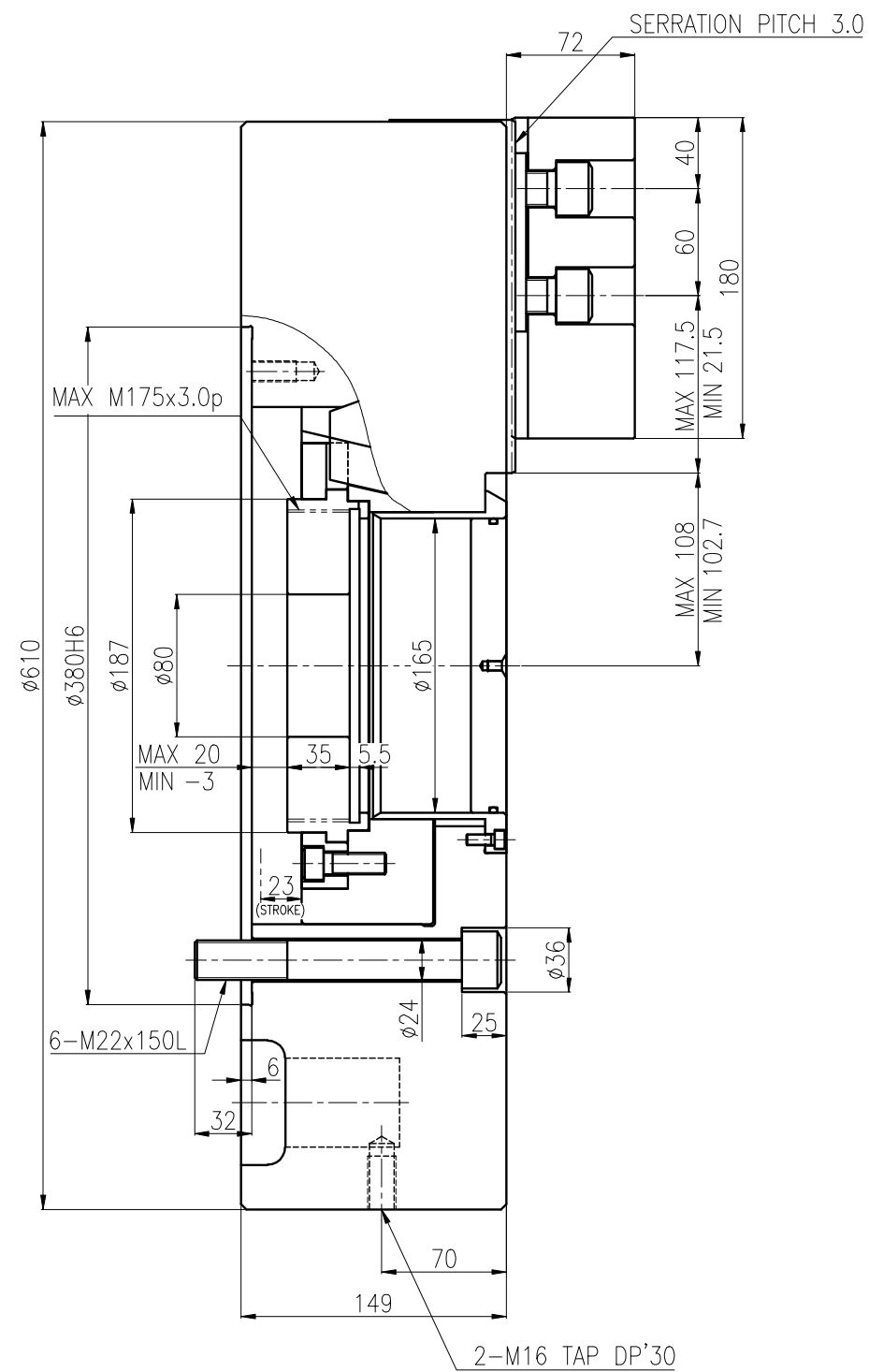


SPECIFICATION	
PLUNGER STROKE	23 mm
JAW STROKE (직경)	10.6 mm
PLUNGER 허용추력	9,117 kgf
최대 파악력	23,861 kgf
최고 회전수	1,700 r.p.m.
WEIGHT (SOFT JAW 포함)	235 kgf
G·D <sup>2</sup> (SOFT JAW 포함)	35.8 kgf·m <sup>2</sup>
최고회전중 파악력	9,789 kgf
적용 CYLINDER	SH-25011
최대설정유압력	30.6 kg/cm <sup>2</sup>



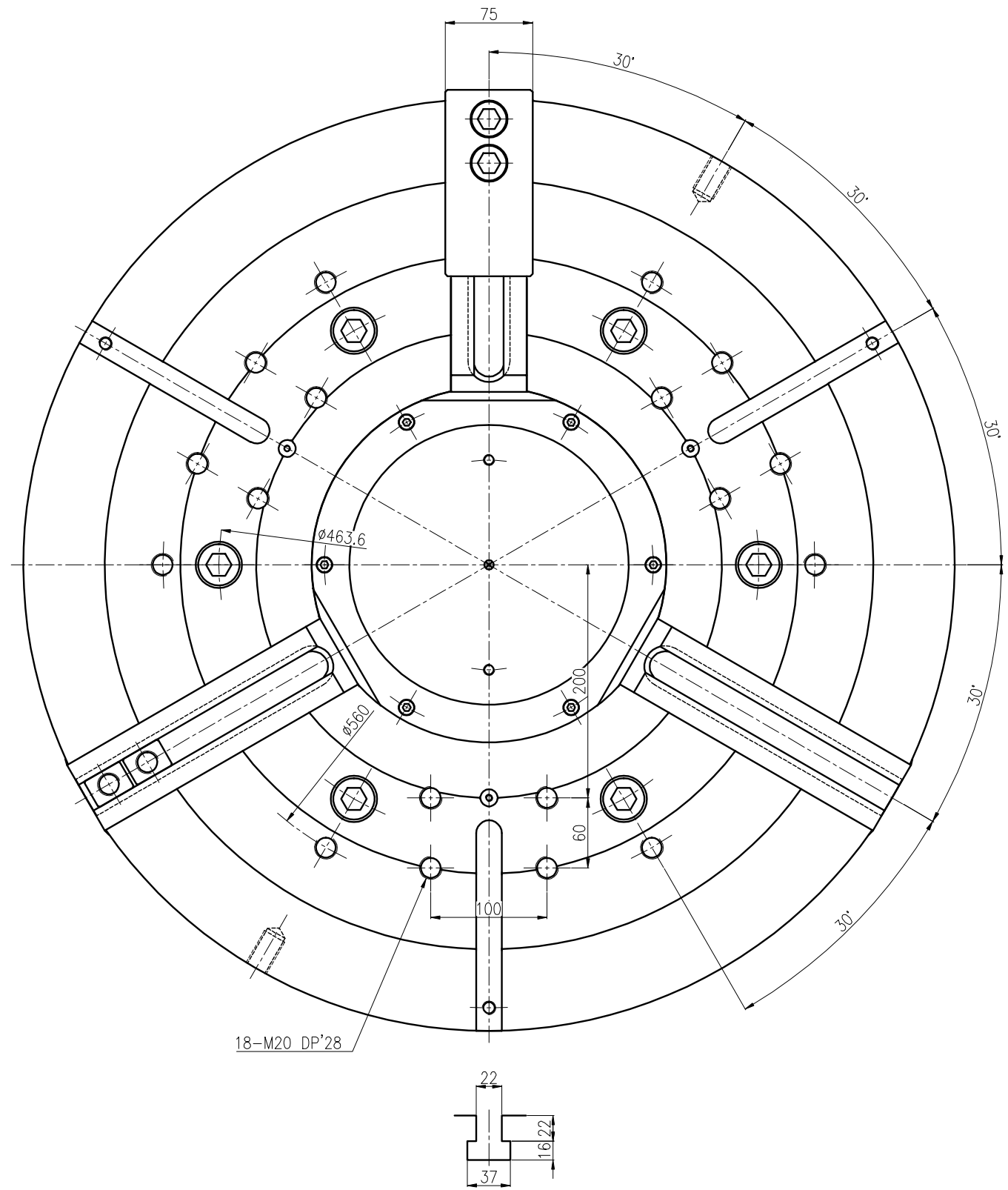
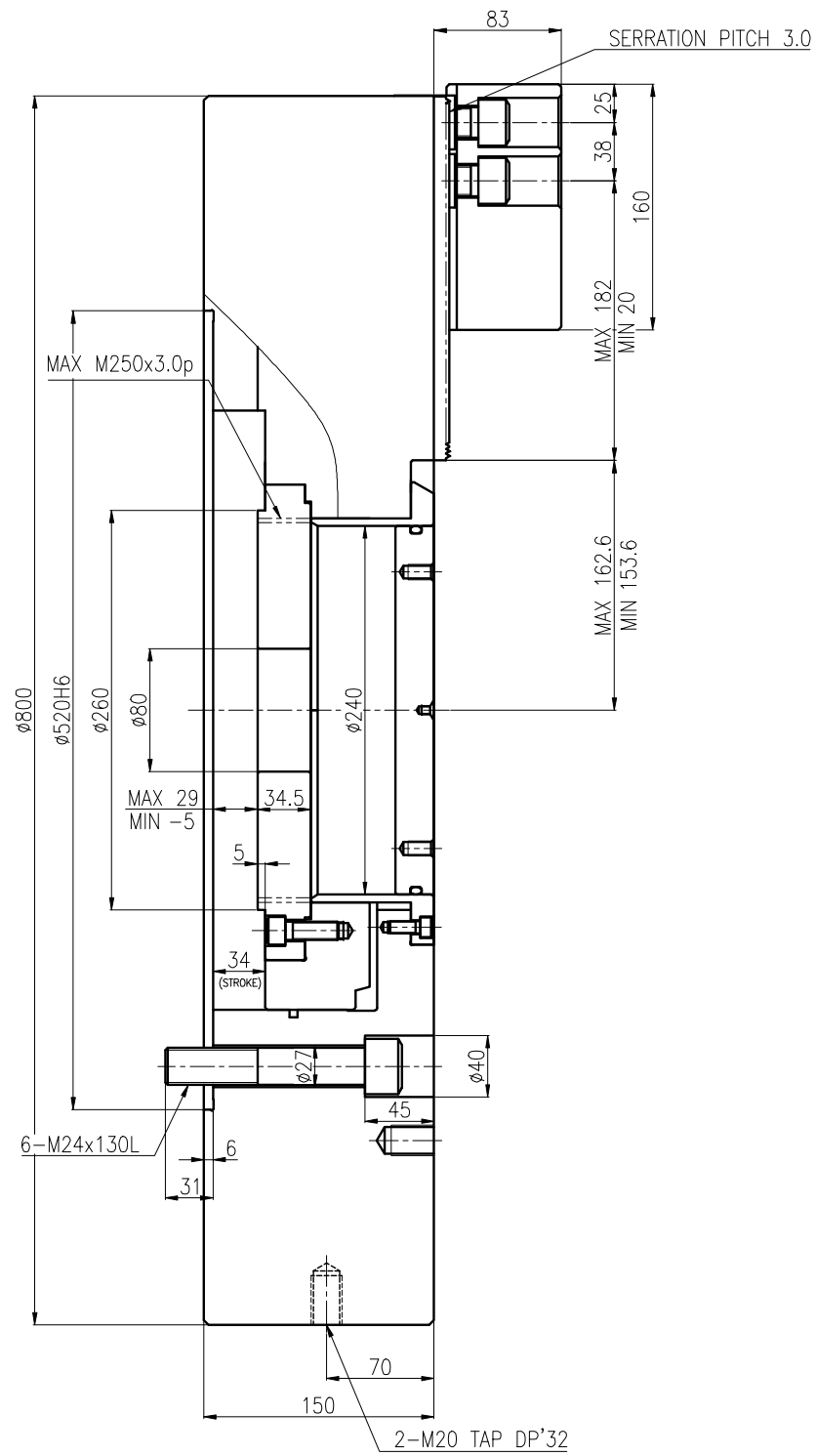
순번	-	규격	-	부품명	외형도
번호	고속 중공 유압척			납품처	
도번	HCH-21-WEB			사용처	
무상 3각법 책도				날짜	
1:1	승인			검도	설계
				<b>SAMCHULLY</b> <small>INDUSTRY CO., LTD.</small>	



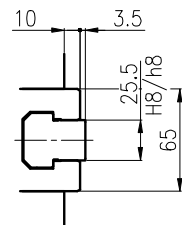


SPECIFICATION	
PLUNGER STROKE	23 mm
JAW STROKE (직경)	10.6 mm
PLUNGER 허용추력	9,117 kgf
최대 파악력	23,861 kgf
최고 회전수	1,400 r.p.m.
WEIGHT (SOFT JAW 포함)	293 kgf
G·D <sup>2</sup> (SOFT JAW 포함)	66.4 kgf·m <sup>2</sup>
최고회전중 파악력	7,954 kgf
적용 CYLINDER	SYHL-2816
최대설정유압력	30.6 kg/cm <sup>2</sup>

순번	구	역	부품명	외형도
분류	고속 중공 유압척		납품처	
도번	HCH-24-WEB		사용처	
무상 3각법 책도			납품처	
1:1	송인	검도	설계	<b>SAMCHULLY</b> <small>SHANGHAI SAMCHULLY CO., LTD.</small>



SPECIFICATION	
PLUNGER STROKE	34 mm
JAW STROKE (반경)	9 mm
PLUNGER 허용추력	10,193 kgf
최대 파악력	24,464 kgf
최고 회전수	1,200 r.p.m.
WEIGHT (SOFT JAW 포함)	530 kgf
G·D <sup>2</sup> (SOFT JAW 포함)	61 kgf·m <sup>2</sup>
최고회전중 파악력	
적용 CYLINDER	SYHL-2816
최대설정유압력	33.6 kg/cm <sup>2</sup>



순번	규격	부품명	외형도
분류	고속 공공 유압력	날판재	
도번	HCH-32-WEB	사용처	
수량		납입	
32번		적용실린더	
1:1	승인	검도	실기

