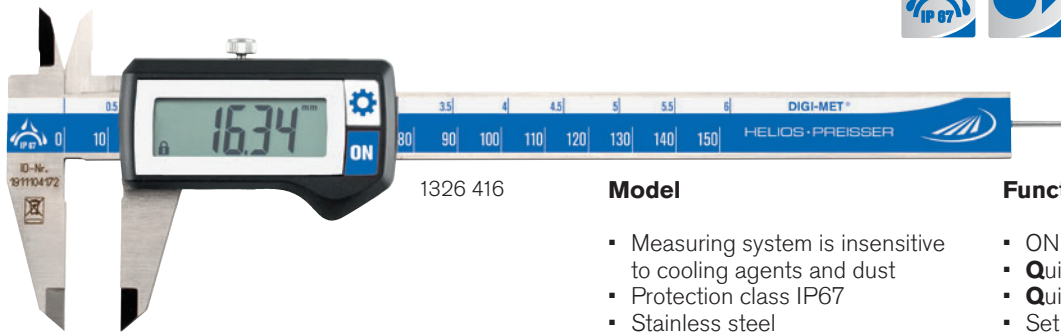




1326 DIGI-MET® Pocket calipers IP67



1326 416

Model

- Measuring system is insensitive to cooling agents and dust
- Protection class IP67
- Stainless steel
- LCD display 11 mm
- DIN 862
- Housing and operating keys have an excellent chemical resistance
- Locking screw
- Inside cross points
- Four way measurement with measuring ranges 150 and 200 mm
- Three way measurement with measuring range 300 mm

Functions

- ON / OFF
- Quick-Start**
- Quick-Lock** (key lock)
- Set to zero at any point
- mm / inch switching
- PRESET-Function (setting a numerical value)

Delivery

- Plastic case



Video electronic

✕	🏠	Measuring range		Jaw length		Reading		Error limit	Depth gauge	Order no.	List price
		mm	inch	mm	inch	mm	inch				
▪		0 - 150	0 - 6	40	1.6	0.01	.0005	0.03	round 1.5	1326 416	159.00
▪		0 - 150	0 - 6	40	1.6	0.01	.0005	0.03	rectangular	1326 417	159.00
▪		0 - 200	0 - 8	50	2.0	0.01	.0005	0.03	rectangular	1326 418	225.00
▪		0 - 300	0 - 12	65	2.5	0.01	.0005	0.03	none	1326 422	285.00

With carbide-tipped measuring jaws

▪		0 - 150	0 - 6	40	1.6	0.01	.0005	0.03	round 1.5	1326 914	343.00
---	--	---------	-------	----	-----	------	-------	------	-----------	----------	--------

Accessories

Battery, 3V-Lithium, CR 2032

Order no.

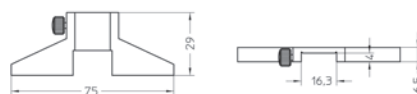
0220 704

List price

EUR

3.90

0220 Additional depth measuring base



Model

- Stainless steel
- Bridge length: 75 mm
- Dimensions: 75 x 6.5 mm

✕	🏠	Order no.	List price
		0220 705	EUR 22.40



DIGI-MET® QuickStart Electronic



1

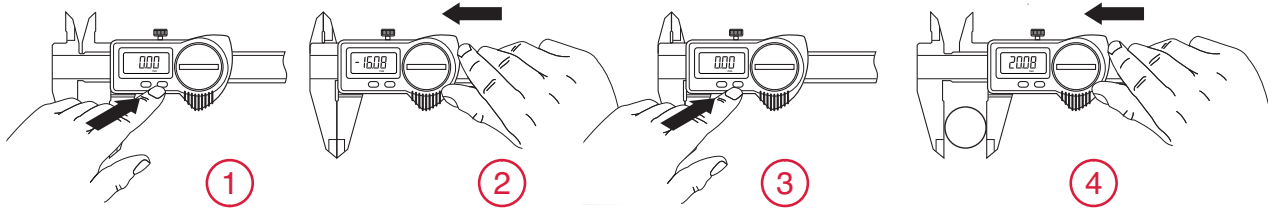
QuickStart-Electronic with the QuickLock-Function for only one zero setting

All digital calipers with the QuickStart-Electronic also have the **QuickLock** Function. Only set the zero position once, zero position remains stored for all further measurements. When the **QuickLock** Function is activated a lock symbol appears in the display, this ensures that the zero position is protected against any operating error caused by accidental usage of the operating keys (keys are locked). The caliper is immediately ready for measurement; once the caliper is switched ON or the slide is moved, the display is automatically activated.

The need to reset to zero as with a conventional caliper once it is switched on is obsolete.

Conventional

- ① Switch ON
- ② Close the measuring jaws
- ③ Set to zero
- ④ Result of measurement



QuickStart Electronic

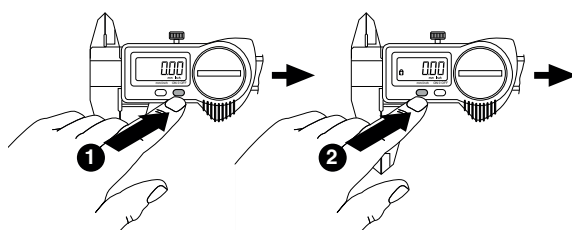


Press the ON key or move the slide

DIGI-MET® QuickLock-Function



- 1. Set to zero
- 2. Activate the QuickLock Function

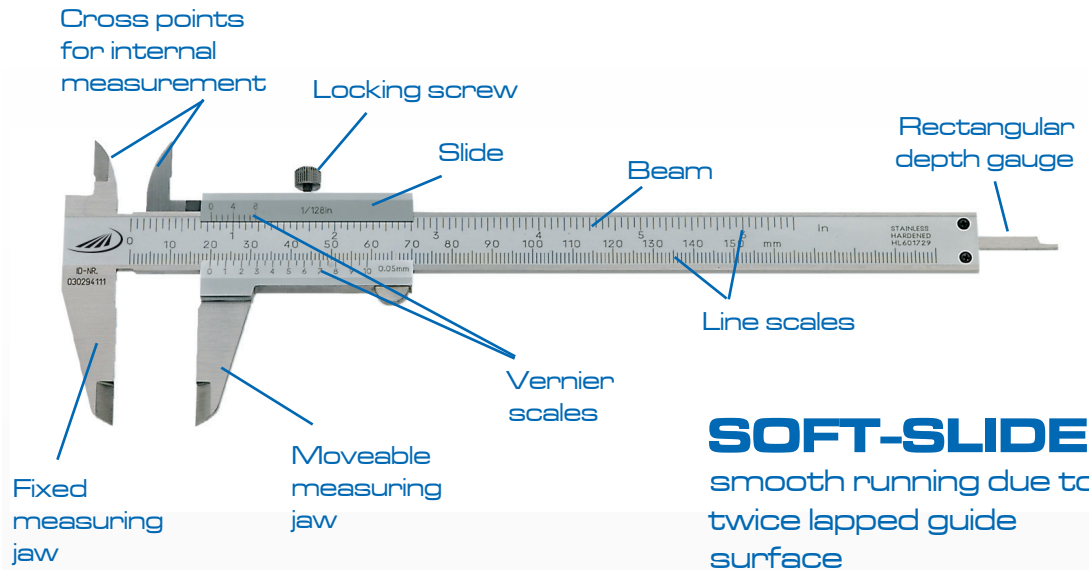


Advantages of the QuickLock Function

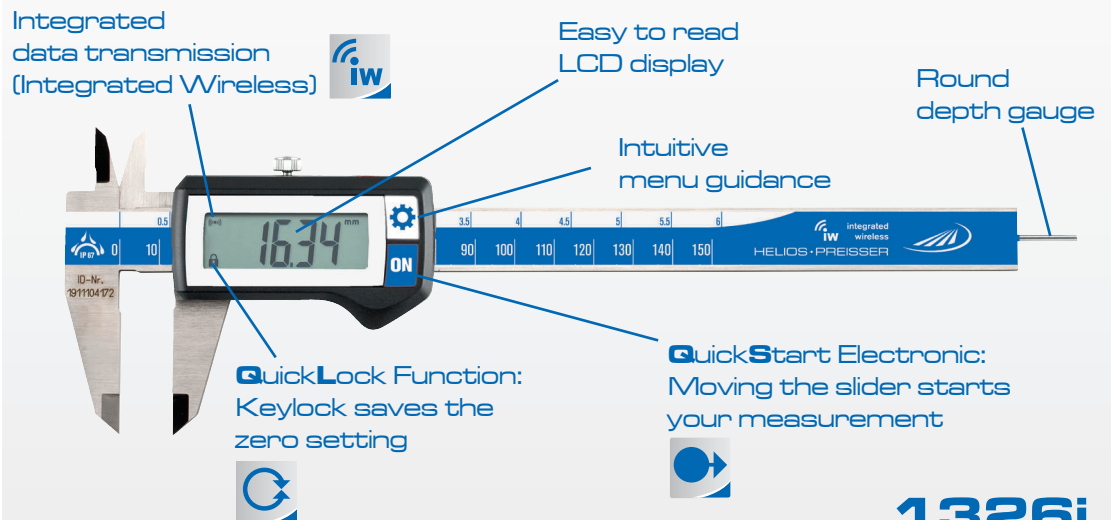
- The caliper is immediately ready for measurement
- Lock symbol appears in the display. This ensures that the zero position is protected against any operating error caused by accidental usage of the operating keys (keys are locked)



SAMPLES CALIPER



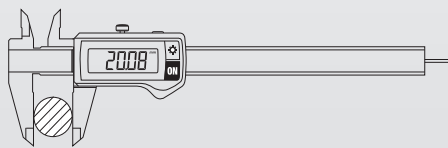
SOFT-SLIDE
smooth running due to twice lapped guide surface



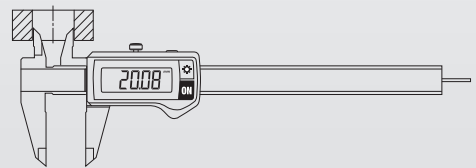
1326i
with integrated wireless

Possible application for calipers

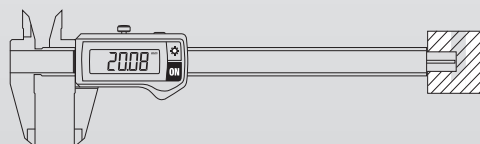
External measurement



Internal measurement



Depth measurement



Step (distance) measurement

