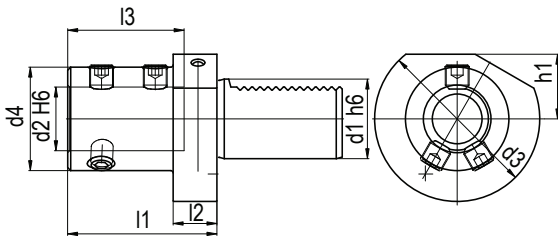
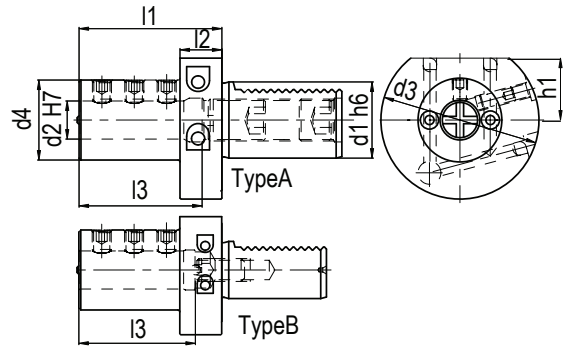


MODELLI DI TORNIO COMPATIBILI
COMPATIBLE LATHE TYPES
VDI
DIN 69880

TIPO - TYPE VDI E1
Per punte ad inserti
For indexable insert drill

REFRIGERANTE
COOLANT
Interno
Internal

Code	d1	d2	d3	d4	h1	l1	l2	l3	
T.E1-30x16	30	16	68	36	28	67	22	54	
T.E1-30x20	30	20	68	40	28	67	22	54	
T.E1-30x25	30	25	68	45	28	71	22	58	
T.E1-30x32	30	32	68	52	28	75	22	61	
T.E1-30x40	30	40	68	65	28	90	22	72	
T.E1-40x16	40	16	83	36	32,5	67	22	54	
T.E1-40x20	40	20	83	40	32,5	67	22	54	
T.E1-40x25	40	25	83	45	32,5	75	22	59	
T.E1-40x32	40	32	83	52	32,5	75	22	61	
T.E1-40x40	40	40	83	65	32,5	90	22	73	
T.E1-40x50	40	50	83	70	32,5	100	22	83	
T.E1-50X16	50	16	98	36	35	80	30	54	
T.E1-50X20	50	20	98	40	35	80	30	54	
T.E1-50X25	50	25	98	45	35	80	30	59	
T.E1-50X32	50	32	98	52	35	80	30	63	
T.E1-50X40	50	40	98	65	35	90	30	73	
T.E1-50X50	50	50	98	75	35	100	30	83	
T.E1-60x16	60	16	123	36	42,5	80	30	54	
T.E1-60X20	60	20	123	40	42,5	80	30	54	
T.E1-60X25	60	25	123	45	42,5	80	30	59	
T.E1-60X32	60	32	123	52	42,5	80	30	63	
T.E1-60X40	60	40	123	65	42,5	90	30	73	
T.E1-60X50	60	50	123	75	42,5	100	30	83	


TIPO - TYPE VDI E2
Portabareno
Boaring bar holder

REFRIGERANTE
COOLANT
Esterno & Interno
External & Internal

Code	d1	d2	d3	d4	h1	l1	l2	l3	T	
T.E2-30x06	30	6	68	55	28	60	22	43	A	
T.E2-30x08	30	8	68	55	28	60	22	43	A	
T.E2-30x10	30	10	68	55	28	60	22	43	A	
T.E2-30x12	30	12	68	55	28	60	22	43	A	
T.E2-30x16	30	16	68	55	28	60	22	55	A	
T.E2-30x20	30	20	68	55	28	60	22	54	B	
T.E2-30x25	30	25	68	55	28	60	22	61	B	
T.E2-30x32	30	32	68	67	28	75	22	66	B	
T.E2-30x40	30	40	68	67	28	75	22	43	B	
T.E2-40x06	40	6	83	55	32,5	75	22	43	A	
T.E2-40x08	40	8	83	55	32,5	75	22	43	A	
T.E2-40X10	40	10	83	55	32,5	75	22	54	A	
T.E2-40X12	40	12	83	55	32,5	75	22	58	A	
T.E2-40X16	40	16	83	55	32,5	75	22	61	A	
T.E2-40X20	40	20	83	55	32,5	75	22	61	A	
T.E2-40X25	40	25	83	55	32,5	75	22	61	B	
T.E2-40X30	40	30	83	82	32,5	75	22	61	B	
T.E2-40X32	40	32	83	82	32,5	75	22	61	B	
T.E2-40X40	40	40	83	82	32,5	90	22	76	B	
T.E2-40X50	40	50	98	98	35	100	-	86	B	
T.E2-50X08	50	8	98	68	35	90	30	-	A	
T.E2-50X12	50	12	98	68	35	90	30	71	A	
T.E2-50X16	50	16	98	68	35	90	30	76	A	
T.E2-50X20	50	20	98	68	35	90	30	76	A	
T.E2-50X25	50	25	98	68	35	90	30	76	A	
T.E2-50X32	50	32	98	69	35	90	30	76	B	
T.E2-50X40	50	40	98	98	35	90	-	76	B	
T.E2-50X50	50	50	98	98	35	100	-	86	B	
T.E2-60X16	60	16	123	68	42,5	90	30	76	A	
T.E2-60X20	60	20	123	68	42,5	90	30	76	A	
T.E2-60X25	60	25	123	68	42,5	90	30	76	A	
T.E2-60X32	60	32	123	68	42,5	90	30	76	A	
T.E2-60X40	60	40	123	98	42,5	90	30	76	B	
T.E2-60X50	60	50	123	98	42,5	100	30	86	B	



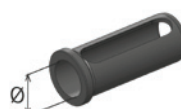
Code	Code
T.E1-30x25	T.E1-50X32
T.E1-30x32	T.E1-50X40
T.E1-30x40	T.E1-50X50
T.E1-40x25	T.E1-60X25
T.E1-40x32	T.E1-60X32
T.E1-40x40	T.E1-60X40
T.E1-40x50	T.E1-60X50
T.E1-50X25	



Code	Code
T.E2-30x25	T.E2-40X40
T.E2-30x32	T.E2-40X50
T.E2-30x40	T.E2-50X25
T.E2-40X25	T.E2-50X32
T.E2-40X30	T.E2-50X40
T.E2-40X32	T.E2-50X50



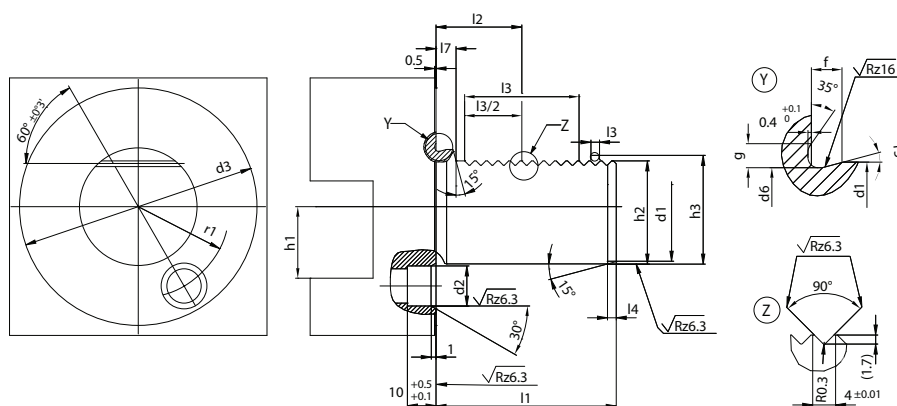
Ød	Code	Ød	Code
Ø8	T.B.VSA.2508	Ø8	T.B.VSA.4008
Ø10	T.B.VSA.2510	Ø10	T.B.VSA.4010
Ø12	T.B.VSA.2512	Ø12	T.B.VSA.4012
Ø8	T.B.VSA.3208	Ø16	T.B.VSA.4016
Ø10	T.B.VSA.3210	Ø20	T.B.VSA.4020
Ø12	T.B.VSA.3212	Ø16	T.B.VSA.5016
Ø16	T.B.VSA.3216	Ø20	T.B.VSA.5020



Ød	Code	Ød	Code
Ø16	T.B.VSB.2516	Ø32	T.B.VSB.4032
Ø20	T.B.VSB.2520	Ø25	T.B.VSB.5025
Ø20	T.B.VSB.3220	Ø32	T.B.VSB.5032
Ø25	T.B.VSB.3225	Ø40	T.B.VSB.5040
Ø25	T.B.VSB.4025		



Ød	Code	Ød	Code
MT1	T.B.VSC.25MT1	MT3	T.B.VSC.40MT3
MT1	T.B.VSC.32MT1	MT1	T.B.VSC.50MT1
MT2	T.B.VSC.32MT2	MT2	T.B.VSC.50MT2
MT1	T.B.VSC.40MT1	MT3	T.B.VSC.50MT3
MT2	T.B.VSC.40MT2		



d1 h6	l1 ±0.3	d2	d3	d6_0.1	f	g	h1 max.	h2 ±0.1	h3 ±0.1	l2 ±0.05	l3 min.	l4 +1	l7	r1 ±0.02	o-ring
16	32	8 H6	40	15,4	2,0	1,7	12	15	16,92	12,7	16	2	3,5	14,5	15 x 1,5
20	40	10 H6	50	19,1	2,4	2	16	18	19,92	21,7	24	2	7	18	18,77 x 1,78
25	48	10 H6	58	24,1	2,4	2	16	23,5	25,42	21,7	24	2	7	21	23,52 x 1,78
30	55	14 H8	68	29,1	2,4	2	20	27	28,92	29,7	40	2	7	25	28,3 x 1,78
40	63	14 H8	83	38,7	3,7	2,8	25	36	37,92	29,7	40	3	7	32	37,77 x 2,62
50	78	16 H8	98	48,7	3,7	2,8	32	45	46,92	35,7	48	3	8	37	47,29 x 2,62
60	94	16 H8	123	58,7	4,3	3,7	32	55	56,92	43,7	56	4	10	48	56,74 x 3,53
80	124	20 H8	158	78,7	4,3	3,7	40	72	73,92	59,7	80	4	10	65	75,79 x 3,53

BMT & VDI Static Tools

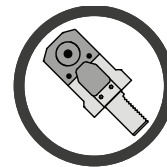
STATIC TOOLS

Portautensili statici per torrette VDI e BMT !

Static tools for VDI & BMT turrets !

Viene proposta un'ampia gamma di modelli adatti ad attrezzare i torni e le torrette dei maggiori costruttori a livello mondiale, come BIGLIA, BMT, DMG MORI, GOODWAY, HAAS, MAZAK, MIYANO, NAKAMURA, OKUMA, TSUGAMI e VDI DIN69880.

The company proposes a wide range of suitable Driven Tools for equipping the lathes turrets by world leader manufacturers, such as BIGLIA, BMT, DMG MORI, GOODWAY, HAAS, MAZAK, MIYANO, NAKAMURA, OKUMA, TSUGAMI and VDI DIN69880.



Maximum precision both for turning and drilling and boring!

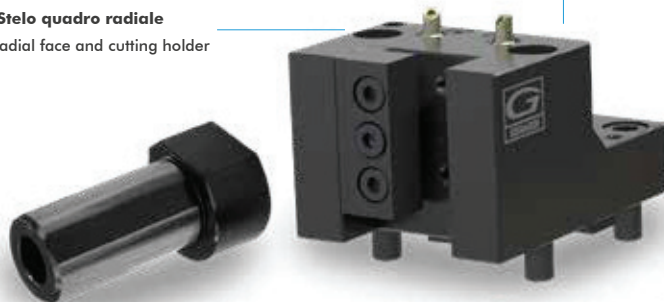


Treatment anti corrosion Anti-corrosion treatment

I Portautensili statici sono costruiti con acciaio rettificato altamente legato e sono sottoposti ad un trattamento anti-corrosione


Static toolholders are produced with certified top quality steel and are subjected to an anti-corrosion treatment

BMT Stelo quadro radiale
BMT radial face and cutting holder



BMT Portabareno
BMT Boring bar holder



 **Refrigerante esterno standard**
External Coolant standard



VDI B2 Portautensile radiale Sinistro
VDI B2 Left radial holder



VDI E2 Portabareno
VDI E2 Boring bar holder



Bussole Porta-bareni Boring bar Sleeves

Le bussole portabareno vengono impiegate su tutte le tipologie di tornio. Possono essere fornite con grani e asole, con battuta, prolungate o ridotte.

The boring bar sleeves are used on all types of lathe. They can be supplied with screw and slot, with collar, extended or reduced.