

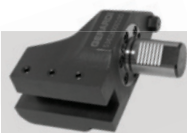
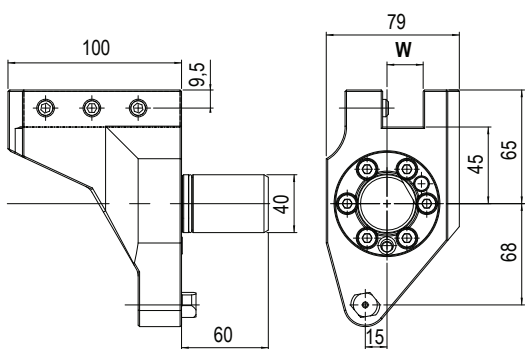
MODELLI DI TORNIO COMPATIBILI
 COMPATIBLE LATHE TYPES

MAZAK

Vedi pagine compatibilità 6.4 / 6.5 - See compatibility pages 6.4 / 6.5

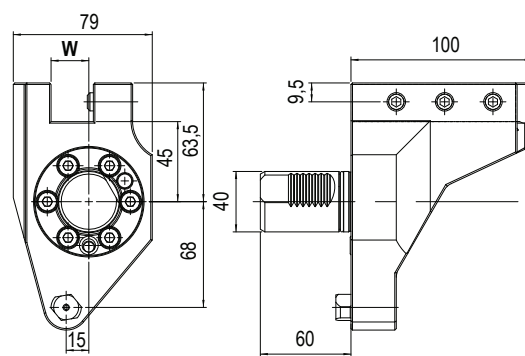
MODELLI DI TORNIO COMPATIBILI - COMPATIBLE LATHE TYPES
- MAZAK QTN1 VDI 40:

 QTN 100/150 M/MS - QTN 200/250 (M/MS/MY/MSY) 16 STATIONS -
 SQT 15/18/200/250 (M/MS/MY/MSY) 16 STATIONS - SQT 100 M/MS

VDI40
QTN1

 TIPO - TYPE
Arretrato Quadro
 Turning Tool Holder

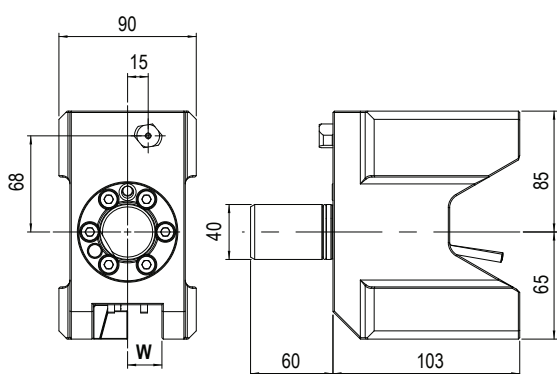
 REFRIGERANTE
 COOLANT
Esterno
 External

| Code | W | Orientation | |
|---------------|----|-----------------|--|
| T.53518000701 | 20 | Sinistro - Left | |


 TIPO - TYPE
Arretrato Quadro
 Turning Tool Holder

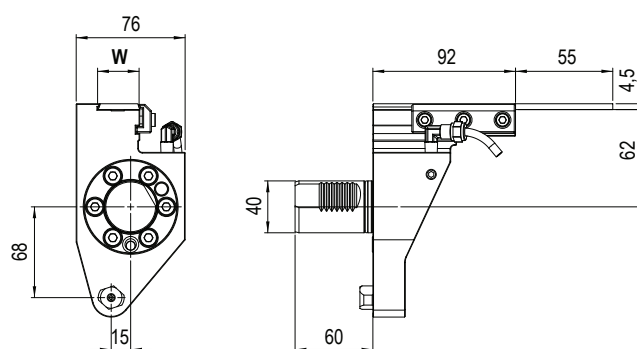
 REFRIGERANTE
 COOLANT
Esterno
 External

| Code | W | Orientation | |
|---------------|----|----------------|--|
| T.53518000101 | 20 | Destro - Right | |


 TIPO - TYPE
Doppio quadro
 Double turning tool holder

 REFRIGERANTE
 COOLANT
Esterno
 External

| Code | W | |
|---------------|----|--|
| T.53538000101 | 20 | |


 TIPO - TYPE
Portalama
 Cut-off holder

 REFRIGERANTE
 COOLANT
Esterno
 External

| Code | W | |
|---------------|----|--|
| T.53518000401 | 20 | |

BMT - QTN1 Ø32



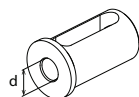
Code

T.53108000400

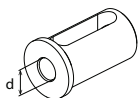


Code

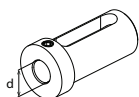
T.53108000500



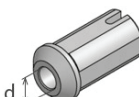
| Ød | Code |
|-----|------------|
| Ø8 | T.B.C3208K |
| Ø10 | T.B.C3210K |
| Ø12 | T.B.C3212K |



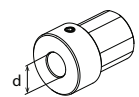
| Ød | Code |
|-----|------------|
| Ø16 | T.B.D3216K |
| Ø20 | T.B.D3220K |
| Ø25 | T.B.D3225K |



| Ød | Code |
|-----|------------|
| Ø16 | T.B.E3216K |
| Ø20 | T.B.E3220K |
| Ø25 | T.B.E3225K |



| Ød | Code |
|---------|------------|
| Ø12,065 | T.B.MZ.MT1 |
| Ø17,78 | T.B.MZ.MT2 |



| Ød | Code |
|-----|-------------|
| Ø20 | T.B.MZ3220G |
| Ø25 | T.B.MZ3225G |

BMT - QTN2 Ø40



Code

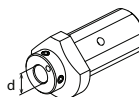
T.53108000400



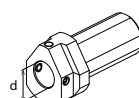
Code

T.53208000100

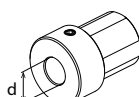
T.53108000500



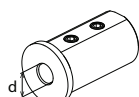
| Ød | Code |
|-----|--------------|
| Ø8 | *53178010700 |
| Ø10 | *53178010600 |
| Ø12 | *53178010500 |
| Ø16 | *53178010400 |
| Ø20 | *53178010300 |



| Ød | Code |
|-----|--------------|
| Ø25 | *53178010200 |
| Ø32 | *53178010100 |

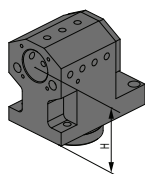


| Ød | Code |
|-----|--------------|
| Ø20 | *53208001000 |
| Ø25 | *53208001100 |
| Ø32 | *53208001200 |



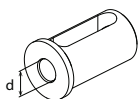
| Ød | Code |
|-----|------------|
| Ø8 | T.B.C4008K |
| Ø10 | T.B.C4010K |
| Ø12 | T.B.C4012K |

BMT 68 Ø40

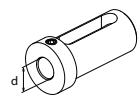


Code

137-00277



| Ød | Code |
|-----|-------------|
| Ø16 | T.B.D.4016K |
| Ø20 | T.B.D.4020K |
| Ø25 | T.B.D.4025K |
| Ø32 | T.B.D.4032K |



| Ød | Code |
|-----|------------|
| Ø16 | T.B.E4016k |
| Ø20 | T.B.E4020k |
| Ø25 | T.B.E4025k |
| Ø32 | T.B.E4032k |

VDI 40



Code

T.53538000201

T.53518000201



Code

T.53638000400



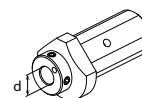
Code

T.532080005100

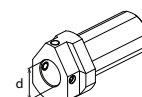


Code

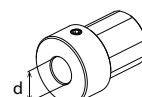
T.532080005100



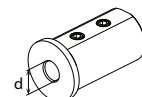
| Ød | Code |
|-----|--------------|
| Ø8 | *53178010700 |
| Ø10 | *53178010600 |
| Ø12 | *53178010500 |
| Ø16 | *53178010400 |
| Ø20 | *53178010300 |



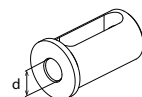
| Ød | Code |
|-----|--------------|
| Ø25 | *53178010200 |
| Ø32 | *53178010100 |



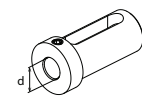
| Ød | Code |
|-----|--------------|
| Ø20 | *53208001000 |
| Ø25 | *53208001100 |
| Ø32 | *53208001200 |
| Ø20 | T.B.MZ3220G |
| Ø25 | T.B.MZ3225G |



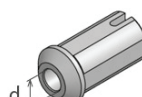
| Ød | Code |
|-----|------------|
| Ø8 | T.B.C4008K |
| Ø10 | T.B.C4010K |
| Ø12 | T.B.C4012K |



| Ød | Code |
|-----|-------------|
| Ø16 | T.B.D.4016K |
| Ø20 | T.B.D.4020K |
| Ø25 | T.B.D.4025K |
| Ø32 | T.B.D.4032K |

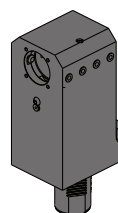


| Ød | Code |
|-----|------------|
| Ø16 | T.B.E4016k |
| Ø20 | T.B.E4020k |
| Ø25 | T.B.E4025k |
| Ø32 | T.B.E4032k |



| Ød | Code |
|---------|------------|
| Ø12,065 | T.B.MZ.MT1 |
| Ø17,78 | T.B.MZ.MT2 |

VDI 50



Code

T.53308000201

BMT & VDI Static Tools

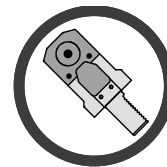
STATIC TOOLS

Portautensili statici per torrette VDI e BMT !

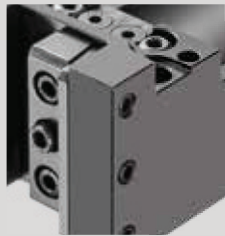
Static tools for VDI & BMT turrets !

Viene proposta un'ampia gamma di modelli adatti ad attrezzare i torni e le torrette dei maggiori costruttori a livello mondiale, come BIGLIA, BMT, DMG MORI, GOODWAY, HAAS, MAZAK, MIYANO, NAKAMURA, OKUMA, TSUGAMI e VDI DIN69880.

The company proposes a wide range of suitable Driven Tools for equipping the lathes turrets by world leader manufacturers, such as BIGLIA, BMT, DMG MORI, GOODWAY, HAAS, MAZAK, MIYANO, NAKAMURA, OKUMA, TSUGAMI and VDI DIN69880.



Maximum precision both for turning and drilling and boring!

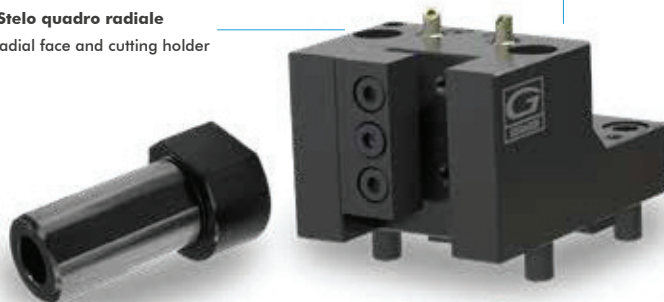


Treatment anti corrosion Anti-corrosion treatment

I Portautensili statici sono costruiti con acciaio rettificato altamente legato e sono sottoposti ad un trattamento anti-corrosione

Static toolholders are produced with certified top quality steel and are subjected to an anti-corrosion treatment

BMT Stelo quadro radiale
BMT radial face and cutting holder



BMT Portabareno
BMT Boring bar holder



 **Refrigerante esterno standard**
External Coolant standard



VDI B2 Portautensile radiale Sinistro
VDI B2 Left radial holder



VDI E2 Portabareno
VDI E2 Boring bar holder



Bussole Porta-bareni Boring bar Sleeves

Le bussole portabareno vengono impiegate su tutte le tipologie di tornio. Possono essere fornite con grani e asole, con battuta, prolungate o ridotte.

The boring bar sleeves are used on all types of lathe. They can be supplied with screw and slot, with collar, extended or reduced.