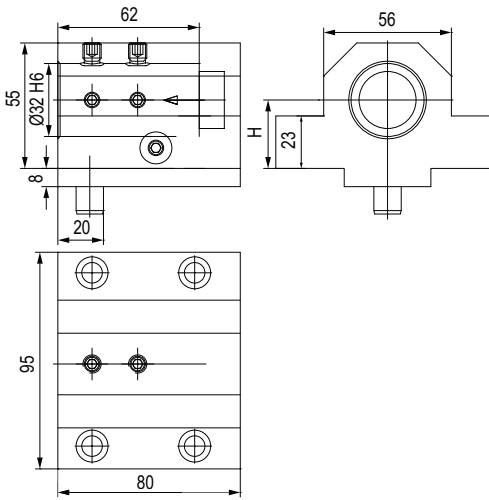


**MODELLI DI TORNO COMPATIBILI**  
 COMPATIBLE LATHE TYPES

MAZAK

Vedi pagine compatibilità 6.4 / 6.5 - See compatibility pages 6.4 / 6.5


 TIPO - TYPE  
**Portapunte**  
**U Drill Holder**

 REFRIGERANTE  
 COOLANT  
**Esterno & Interno**  
**External & Internal**

| Code          | Ø  | H        |  |
|---------------|----|----------|--|
| T.53108000500 | 32 | 30 ±0,02 |  |

**BMT**  
**QTN1**

**BMT - QTN1 Ø32**



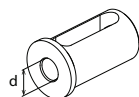
**Code**

T.53108000400

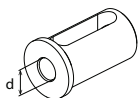


**Code**

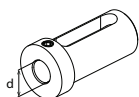
T.53108000500



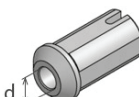
| Ød  | Code       |
|-----|------------|
| Ø8  | T.B.C3208K |
| Ø10 | T.B.C3210K |
| Ø12 | T.B.C3212K |



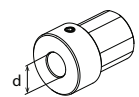
| Ød  | Code       |
|-----|------------|
| Ø16 | T.B.D3216K |
| Ø20 | T.B.D3220K |
| Ø25 | T.B.D3225K |



| Ød  | Code       |
|-----|------------|
| Ø16 | T.B.E3216K |
| Ø20 | T.B.E3220K |
| Ø25 | T.B.E3225K |



| Ød      | Code       |
|---------|------------|
| Ø12,065 | T.B.MZ.MT1 |
| Ø17,78  | T.B.MZ.MT2 |



| Ød  | Code        |
|-----|-------------|
| Ø20 | T.B.MZ3220G |
| Ø25 | T.B.MZ3225G |

**BMT - QTN2 Ø40**



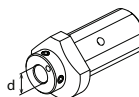
**Code**

T.53108000400

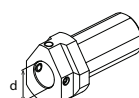


**Code**

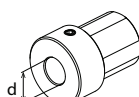
T.53208000100  
T.53108000500



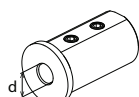
| Ød  | Code         |
|-----|--------------|
| Ø8  | *53178010700 |
| Ø10 | *53178010600 |
| Ø12 | *53178010500 |
| Ø16 | *53178010400 |
| Ø20 | *53178010300 |



| Ød  | Code         |
|-----|--------------|
| Ø25 | *53178010200 |
| Ø32 | *53178010100 |

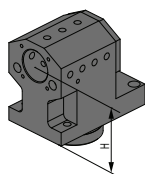


| Ød  | Code         |
|-----|--------------|
| Ø20 | *53208001000 |
| Ø25 | *53208001100 |
| Ø32 | *53208001200 |



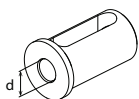
| Ød  | Code       |
|-----|------------|
| Ø8  | T.B.C4008K |
| Ø10 | T.B.C4010K |
| Ø12 | T.B.C4012K |

**BMT 68 Ø40**

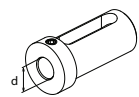


**Code**

137-00277



| Ød  | Code        |
|-----|-------------|
| Ø16 | T.B.D.4016K |
| Ø20 | T.B.D.4020K |
| Ø25 | T.B.D.4025K |
| Ø32 | T.B.D.4032K |



| Ød  | Code       |
|-----|------------|
| Ø16 | T.B.E4016k |
| Ø20 | T.B.E4020k |
| Ø25 | T.B.E4025k |
| Ø32 | T.B.E4032k |

**VDI 40**



**Code**

T.53538000201  
T.53518000201



**Code**

T.53638000400



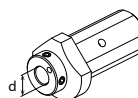
**Code**

T.532080005100

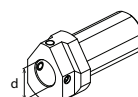


**Code**

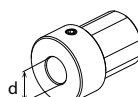
T.532080005100



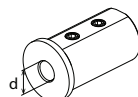
| Ød  | Code         |
|-----|--------------|
| Ø8  | *53178010700 |
| Ø10 | *53178010600 |
| Ø12 | *53178010500 |
| Ø16 | *53178010400 |
| Ø20 | *53178010300 |



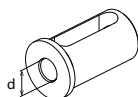
| Ød  | Code         |
|-----|--------------|
| Ø25 | *53178010200 |
| Ø32 | *53178010100 |



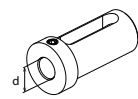
| Ød  | Code         |
|-----|--------------|
| Ø20 | *53208001000 |
| Ø25 | *53208001100 |
| Ø32 | *53208001200 |
| Ø20 | T.B.MZ3220G  |
| Ø25 | T.B.MZ3225G  |



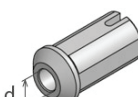
| Ød  | Code       |
|-----|------------|
| Ø8  | T.B.C4008K |
| Ø10 | T.B.C4010K |
| Ø12 | T.B.C4012K |



| Ød  | Code        |
|-----|-------------|
| Ø16 | T.B.D.4016K |
| Ø20 | T.B.D.4020K |
| Ø25 | T.B.D.4025K |
| Ø32 | T.B.D.4032K |

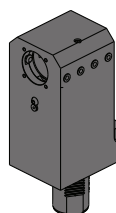


| Ød  | Code       |
|-----|------------|
| Ø16 | T.B.E4016k |
| Ø20 | T.B.E4020k |
| Ø25 | T.B.E4025k |
| Ø32 | T.B.E4032k |



| Ød      | Code       |
|---------|------------|
| Ø12,065 | T.B.MZ.MT1 |
| Ø17,78  | T.B.MZ.MT2 |

**VDI 50**



**Code**

T.53308000201

**BMT & VDI Static Tools**

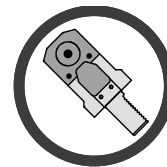
# STATIC TOOLS

**Portautensili statici per torrette VDI e BMT !**

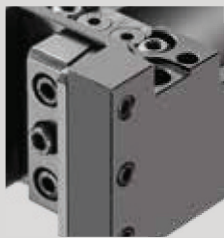
*Static tools for VDI & BMT turrets !*

Viene proposta un'ampia gamma di modelli adatti ad attrezzare i torni e le torrette dei maggiori costruttori a livello mondiale, come BIGLIA, BMT, DMG MORI, GOODWAY, HAAS, MAZAK, MIYANO, NAKAMURA, OKUMA, TSUGAMI e VDI DIN69880.

The company proposes a wide range of suitable Driven Tools for equipping the lathes turrets by world leader manufacturers, such as BIGLIA, BMT, DMG MORI, GOODWAY, HAAS, MAZAK, MIYANO, NAKAMURA, OKUMA, TSUGAMI and VDI DIN69880.



*Maximum precision both for turning and drilling and boring!*

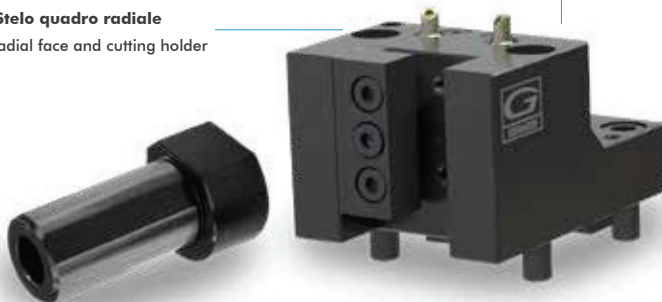


**Trattamento anti corrosione**  
*Anti-corrosion treatment*

I Portautensili statici sono costruiti con acciaio rettificato altamente legato e sono sottoposti ad un trattamento anti-corrosione


Static toolholders are produced with certified top quality steel and are subjected to an anti-corrosion treatment

**BMT Stelo quadro radiale**  
BMT radial face and cutting holder



**BMT Portabareno**  
BMT Boring bar holder



 **Refrigerante esterno standard**  
External Coolant standard



**VDI B2 Portautensile radiale Sinistro**  
VDI B2 Left radial holder



**VDI E2 Portabareno**  
VDI E2 Boring bar holder



**Bussole Porta-bareni**  
*Boring bar Sleeves*

Le bussole portabareno vengono impiegate su tutte le tipologie di tornio. Possono essere fornite con grani e asole, con battuta, prolungate o ridotte.

The boring bar sleeves are used on all types of lathe. They can be supplied with screw and slot, with collar, extended or reduced.