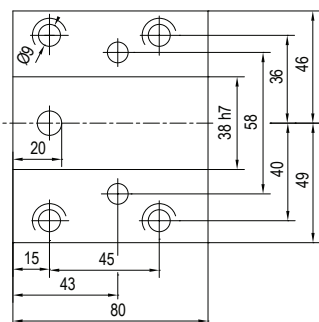
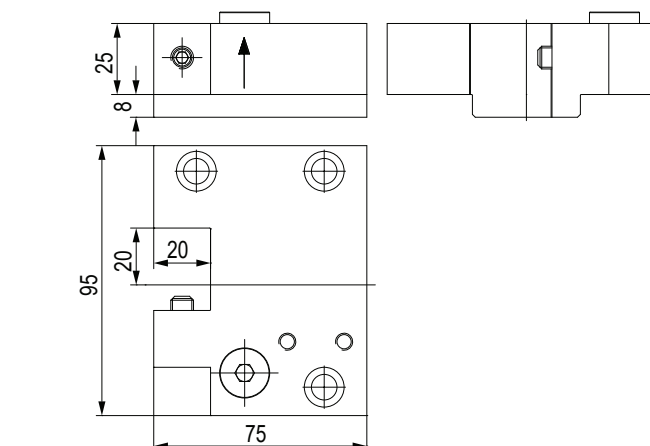


**MODELLI DI TORNIO COMPATIBILI**  
 COMPATIBLE LATHE TYPES

**MAZAK**

Vedi pagine compatibilità 6.4 / 6.5 - See compatibility pages 6.4 / 6.5

**BMT**  
**QTN1**
**ATTACCO / COUPLING**

**MODELLI DI TORNIO COMPATIBILI - COMPATIBLE LATHE TYPES**
**- MAZAK NEXUS:**  
 QT NEXUS 100 (M/MS/MY/MSY)


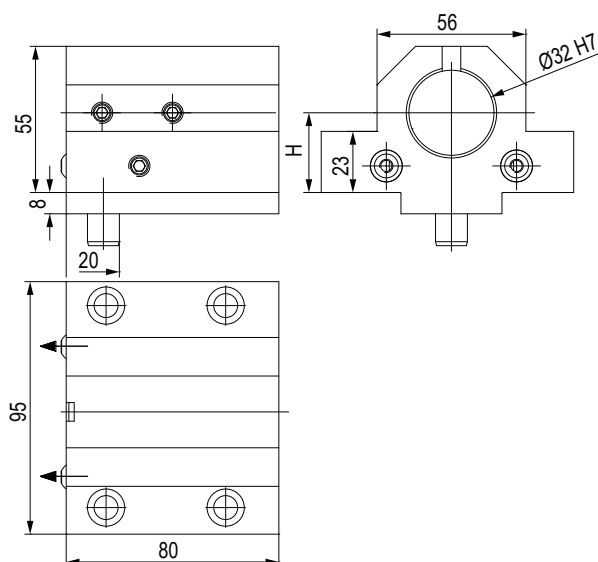
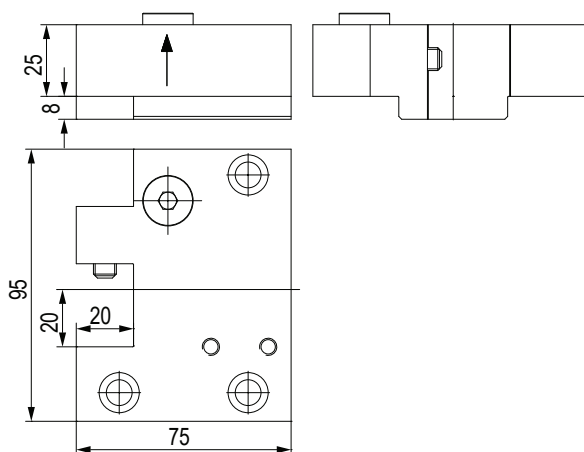
TIPO - TYPE

**Arretrato quadro**  
 Turning Holder FWD

 REFRIGERANTE  
 COOLANT

**Esterno**  
 External

Code	W	Orientation	
T.53108000101	20	FWD	



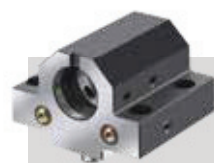
TIPO - TYPE

**Arretrato quadro**  
 Turning Holder RVD

 REFRIGERANTE  
 COOLANT

**Esterno**  
 External

Code	W	Orientation	
T.53108000201	20	RVD	



TIPO - TYPE

**Portabareno**  
 Boring bar holder

 REFRIGERANTE  
 COOLANT

**Esterno & Interno**  
 External & Internal

Code	Ø	H	
T.53108000400	32	30 ±0,02	

**BMT - QTN1 Ø32**



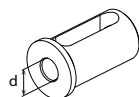
**Code**

T.53108000400

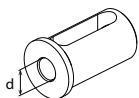


**Code**

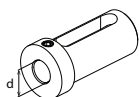
T.53108000500



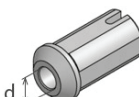
Ød	Code
Ø8	T.B.C3208K
Ø10	T.B.C3210K
Ø12	T.B.C3212K



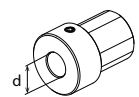
Ød	Code
Ø16	T.B.D3216K
Ø20	T.B.D3220K
Ø25	T.B.D3225K



Ød	Code
Ø16	T.B.E3216K
Ø20	T.B.E3220K
Ø25	T.B.E3225K



Ød	Code
Ø12,065	T.B.MZ.MT1
Ø17,78	T.B.MZ.MT2



Ød	Code
Ø20	T.B.MZ3220G
Ø25	T.B.MZ3225G

**BMT - QTN2 Ø40**



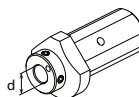
**Code**

T.53108000400

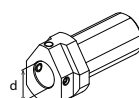


**Code**

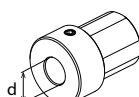
T.53208000100  
T.53108000500



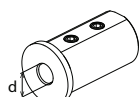
Ød	Code
Ø8	*53178010700
Ø10	*53178010600
Ø12	*53178010500
Ø16	*53178010400
Ø20	*53178010300



Ød	Code
Ø25	*53178010200
Ø32	*53178010100

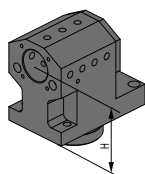


Ød	Code
Ø20	*53208001000
Ø25	*53208001100
Ø32	*53208001200



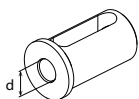
Ød	Code
Ø8	T.B.C4008K
Ø10	T.B.C4010K
Ø12	T.B.C4012K

**BMT 68 Ø40**

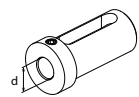


**Code**

137-00277



Ød	Code
Ø16	T.B.D.4016K
Ø20	T.B.D.4020K
Ø25	T.B.D.4025K
Ø32	T.B.D.4032K



Ød	Code
Ø16	T.B.E4016k
Ø20	T.B.E4020k
Ø25	T.B.E4025k
Ø32	T.B.E4032k

**VDI 40**



**Code**

T.53538000201  
T.53518000201



**Code**

T.53638000400



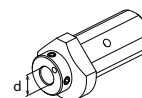
**Code**

T.532080005100

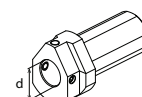


**Code**

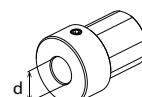
T.532080005100



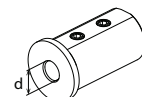
Ød	Code
Ø8	*53178010700
Ø10	*53178010600
Ø12	*53178010500
Ø16	*53178010400
Ø20	*53178010300



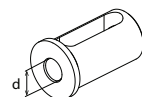
Ød	Code
Ø25	*53178010200
Ø32	*53178010100



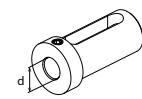
Ød	Code
Ø20	*53208001000
Ø25	*53208001100
Ø32	*53208001200
Ø20	T.B.MZ3220G
Ø25	T.B.MZ3225G



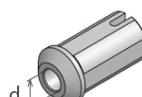
Ød	Code
Ø8	T.B.C4008K
Ø10	T.B.C4010K
Ø12	T.B.C4012K



Ød	Code
Ø16	T.B.D.4016K
Ø20	T.B.D.4020K
Ø25	T.B.D.4025K
Ø32	T.B.D.4032K

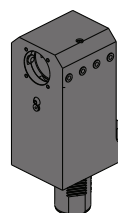


Ød	Code
Ø16	T.B.E4016k
Ø20	T.B.E4020k
Ø25	T.B.E4025k
Ø32	T.B.E4032k



Ød	Code
Ø12,065	T.B.MZ.MT1
Ø17,78	T.B.MZ.MT2

**VDI 50**



**Code**

T.53308000201

## BMT & VDI Static Tools

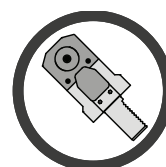
# STATIC TOOLS

### Portautensili statici per torrette VDI e BMT !

#### Static tools for VDI & BMT turrets !

Viene proposta un'ampia gamma di modelli adatti ad attrezzare i torni e le torrette dei maggiori costruttori a livello mondiale, come BIGLIA, BMT, DMG MORI, GOODWAY, HAAS, MAZAK, MIYANO, NAKAMURA, OKUMA, TSUGAMI e VDI DIN69880.

The company proposes a wide range of suitable Driven Tools for equipping the lathes turrets by world leader manufacturers, such as BIGLIA, BMT, DMG MORI, GOODWAY, HAAS, MAZAK, MIYANO, NAKAMURA, OKUMA, TSUGAMI and VDI DIN69880.



*Maximum precision both for turning and drilling and boring!*

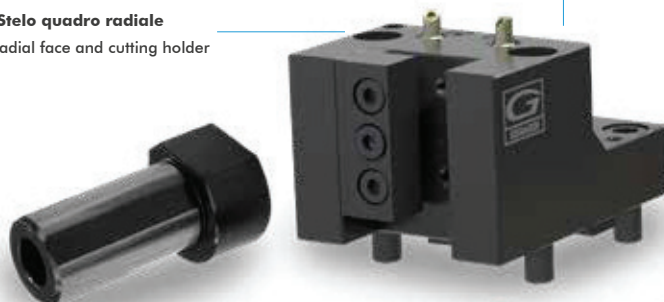


#### Treatment anti corrosion Anti-corrosion treatment

I Portautensili statici sono costruiti con acciaio rettificato altamente legato e sono sottoposti ad un trattamento anti-corrosione

Static toolholders are produced with certified top quality steel and are subjected to an anti-corrosion treatment

**BMT Stelo quadro radiale**  
BMT radial face and cutting holder



**BMT Portabareno**  
BMT Boring bar holder



 **Refrigerante esterno standard**  
External Coolant standard



**VDI B2 Portautensile radiale Sinistro**  
VDI B2 Left radial holder



**VDI E2 Portabareno**  
VDI E2 Boring bar holder



#### Bussole Porta-bareni Boring bar Sleeves

Le bussole portabareno vengono impiegate su tutte le tipologie di tornio. Possono essere fornite con grani e asole, con battuta, prolungate o ridotte.

The boring bar sleeves are used on all types of lathe. They can be supplied with screw and slot, with collar, extended or reduced.