

**MODELLI DI TORNIO COMPATIBILI**  
**COMPATIBLE LATHE TYPES**

DOOSAN

HWACHEON

HYUNDAI WIA

SAMSUNG

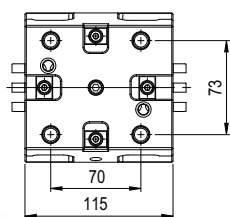
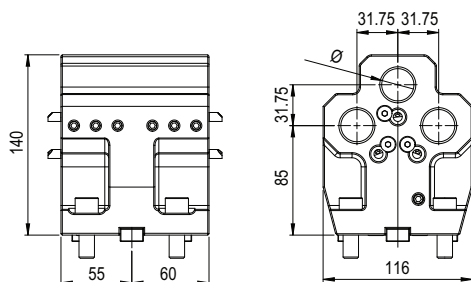
VICTOR

HAAS

MAXIS

TONGAI

Vedi pagine compatibilità 6.4 / 6.5 - See compatibility pages 6.4 / 6.5

**BMT**  
**65**

 TIPO - TYPE  
**Portabareno 3 posizioni**  
 3 pos. Boring bar tool holder

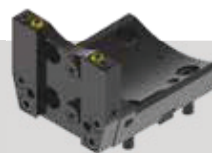
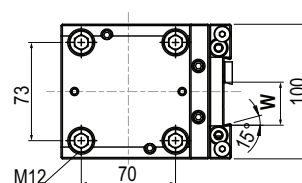
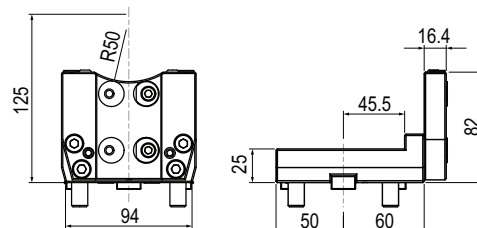
 REFRIGERANTE  
 COOLANT  
**Esterno**  
 External

Code

Ø

T.BMT.65BBT25H

25


 TIPO - TYPE  
**Porta Lama**  
 Cut off holder

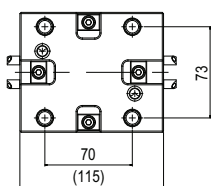
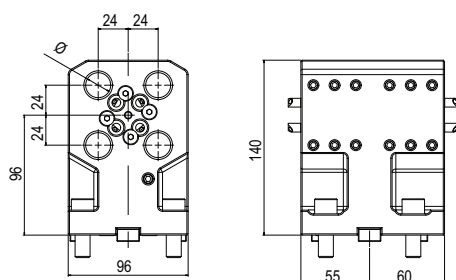
 REFRIGERANTE  
 COOLANT  
**Esterno**  
 External

Code

W

T.BMT.65H13200H

32


 TIPO - TYPE  
**Portabareno 4 posizioni**  
 4 pos. Boring bar tool holder

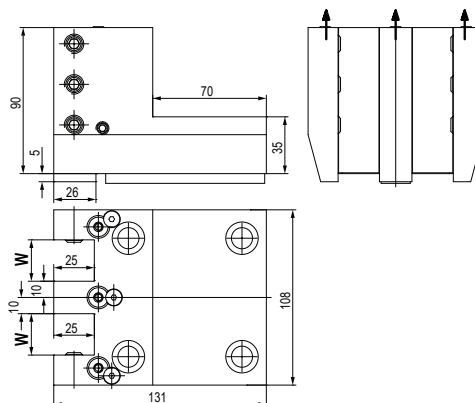
 REFRIGERANTE  
 COOLANT  
**Esterno**  
 External

Code

Ø

T.BMT.65BB2D20H

20


 TIPO - TYPE  
**Stelo quadro radiale doppio**  
 Radial 2 Face cutting holder

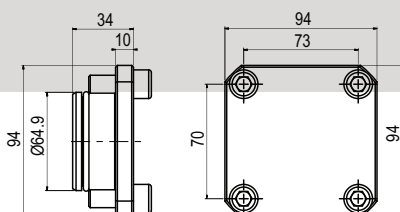
 REFRIGERANTE  
 COOLANT  
**Esterno**  
 External

Code

W

T.BMT.65C1Y2525K

25

**Tappo in acciaio**  
**Steel Turret Cup**


Code

T.BMT.65Z10000H

BMT 45 - 55 - 65 - 75 - 85

**BMT45 Ø20-Ø32**



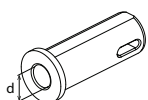
Code

T.BMT.45BB3265H

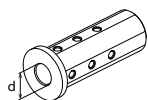


Code

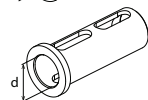
T.BMT.45BBD20H



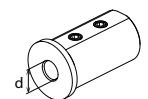
Ød	Code
Ø32	T.B.F32.MT1
Ø32	T.B.F32.MT2



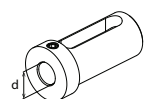
Ø8	T.B.A3208G
Ø10	T.B.A3210G
Ø12	T.B.A3212G
Ø16	T.B.A3216G
Ø20	T.B.A3220G



Ø25	T.B.B3225G
-----	------------



Ø16	T.B.D3216K
Ø20	T.B.D3220K
Ø25	T.B.D3225K



Ø8	T.B.E2008K
Ø10	T.B.E2010K
Ø12	T.B.E2012K
Ø16	T.B.E2016K
Ø16	T.B.E3216K
Ø20	T.B.E3220K
Ø25	T.B.E3225K

**BMT55 Ø40**



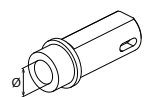
Code

T.BMT.55BB4070H

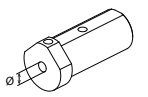


Code

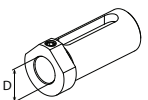
T.BMT.55BBC4060K  
T.BMT.55BBC40100K



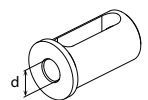
Ød	Code
-	T.B.L.MT1
-	T.B.L.MT2
-	T.B.L.MT3



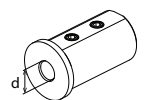
Ød	Code
Ø10	T.B.M4010G
Ø12	T.B.M4012G
Ø16	T.B.M4016G



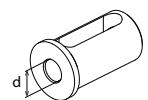
Ød	Code
Ø20	T.B.DS14020G
Ø25	T.B.DS14025G
Ø32	T.B.DS14032G



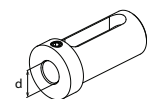
Ød	Code
Ø20	T.B.DS24020G
Ø25	T.B.DS24025G
Ø32	T.B.DS24032G



Ød	Code
Ø8	T.B.C4008K
Ø10	T.B.C4010K
Ø12	T.B.C4012K



Ød	Code
Ø16	T.B.D.4016K
Ø20	T.B.D.4020K
Ø25	T.B.D.4025K
Ø32	T.B.D.4032K



Ød	Code
Ø16	T.B.E4016G
Ø20	T.B.E4020G
Ø25	T.B.E4025G
Ø32	T.B.E4032G

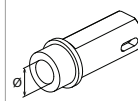
DOOSAN / HARDINGE / SAMSUNG / HWACHEON  
HYUNDAI WIA / VICTOR / HAAS / GOODWAY / JYOTI

**BMT65/75 Ø40/50**

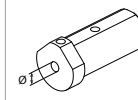


Code

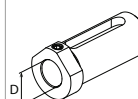
T.BMT.65BBC4072H  
T.BMT.65BBC40100H



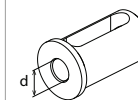
Ød	Code
-	T.B.L.MT1
-	T.B.L.MT2
-	T.B.L.MT3



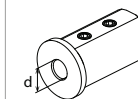
Ød	Code
Ø10	T.B.M4010G
Ø12	T.B.M4012G
Ø16	T.B.M4016G



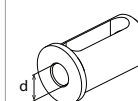
Ød	Code
Ø20	T.B.DS14020G
Ø25	T.B.DS14025G
Ø32	T.B.DS14032G



Ød	Code
Ø20	T.B.DS24020G
Ø25	T.B.DS24025G
Ø32	T.B.DS24032G



Ød	Code
Ø8	T.B.C4008K
Ø10	T.B.C4010K
Ø12	T.B.C4012K



Ød	Code
Ø16	T.B.D.4016K
Ø20	T.B.D.4020K
Ø25	T.B.D.4025K
Ø32	T.B.D.4032K



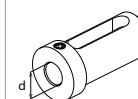
Ød	Code
Ø16	T.B.E4016k
Ø20	T.B.E4020k
Ø25	T.B.E4025k
Ø32	T.B.E4032k

**BMT85 Ø60**

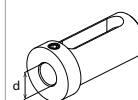


Code

T.BMT.75BBC60110H



Ød	Code
Ø25	T.B.E5025k
Ø32	T.B.E5032k
Ø40	T.B.E5040k



Ød	Code
Ø25	T.B.E6025k
Ø32	T.B.E6032k
Ø40	T.B.E6040k
Ø50	T.B.E6050k

## BMT & VDI Static Tools

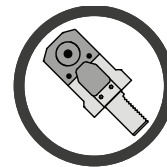
# STATIC TOOLS

### Portautensili statici per torrette VDI e BMT !

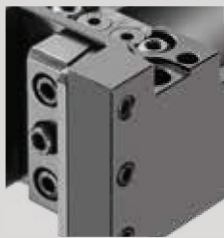
#### Static tools for VDI & BMT turrets !

Viene proposta un'ampia gamma di modelli adatti ad attrezzare i torni e le torrette dei maggiori costruttori a livello mondiale, come BIGLIA, BMT, DMG MORI, GOODWAY, HAAS, MAZAK, MIYANO, NAKAMURA, OKUMA, TSUGAMI e VDI DIN69880.

The company proposes a wide range of suitable Driven Tools for equipping the lathes turrets by world leader manufacturers, such as BIGLIA, BMT, DMG MORI, GOODWAY, HAAS, MAZAK, MIYANO, NAKAMURA, OKUMA, TSUGAMI and VDI DIN69880.



*Maximum precision both for turning and drilling and boring!*



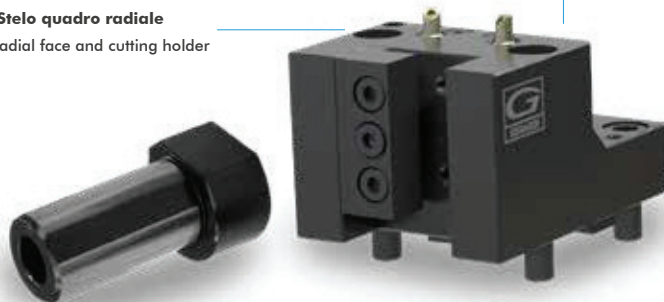
#### **Trattamento anti corrosione** Anti-corrosion treatment

I Portautensili statici sono costruiti con acciaio rettificato altamente legato e sono sottoposti ad un trattamento anti-corrosione

Static toolholders are produced with certified top quality steel and are subjected to an anti-corrosion treatment

#### **BMT Stelo quadro radiale**

BMT radial face and cutting holder



#### **BMT Portabareno**

BMT Boring bar holder



**Refrigerante esterno standard**  
External Coolant standard



**VDI B2 Portautensile radiale Sinistro**  
VDI B2 Left radial holder



**VDI E2 Portabareno**  
VDI E2 Boring bar holder



#### **Bussole Porta-bareni** Boring bar Sleeves

Le bussole portabareno vengono impiegate su tutte le tipologie di tornio. Possono essere fornite con grani e asole, con battuta, prolungate o ridotte.

The boring bar sleeves are used on all types of lathe. They can be supplied with screw and slot, with collar, extended or reduced.