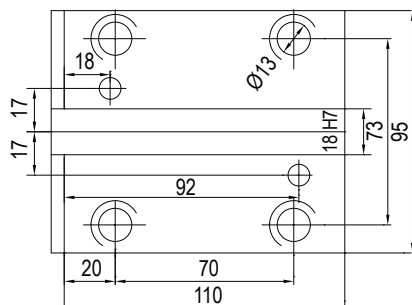


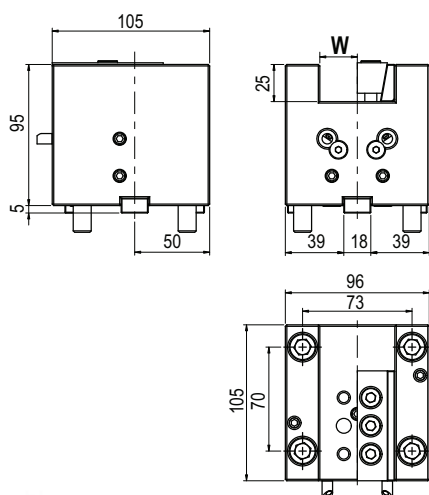
MODELLI DI TORNO COMPATIBILI
 COMPATIBLE LATHE TYPES

DOOSAN
HWACHEON
HYUNDAI WIA
SAMSUNG
VICTOR
HAAS
MAXIS
TONGAI

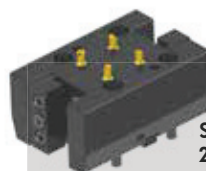
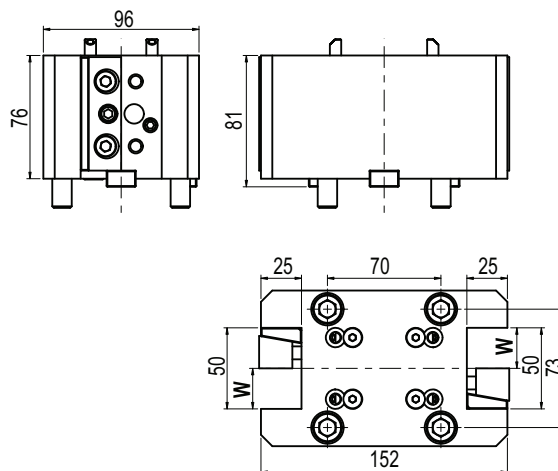
Vedi pagine compatibilità 6.4 / 6.5 - See compatibility pages 6.4 / 6.5

BMT
65
ATTACCO / COUPLING

MODELLI DI TORNO COMPATIBILI - COMPATIBLE LATHE TYPES

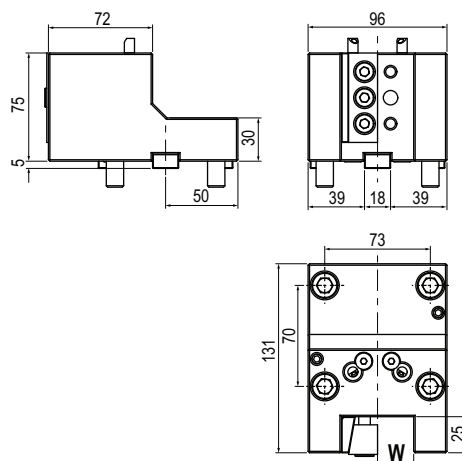
- **DOOSAN:** PUMA 2100/2600 (M,LM,MS,LMS) (Y,LY,SY,LSY) - PUMA 300 (M,MS,MB,MC) - PUMA TT2000 - PUMA3100(M,LM,LY,XML,XLY,ULM,ULY) - PUMA MX2000/2500 - PUMA MX2600 (T,SY,ST) PUMA TT2500 (MS/SY) - PUMA V400 (M) - PUMA VT450 (M,2SP) - INVERTURN 3000 (M)
- **HAAS:** ST20 - ST25 - ST30 - ST35 - DS30Y - ST-20Y - ST-25Y - ST-30Y - ST-35Y
- **HWACHEON:** CUTEX-240 (MC/SMC) - HI-TECH 200, 230, 300, 400, 450 (MC/SMC/YMC/YSMC) VT-450 T2-SERIES (MC/SMC/YMC/YSMC)
- **HYUNDAI WIA:** L300 (MA/MC/LMA/LMC/SMA/SMC/ LMSA) - LM 2000, 2500 (TTM/TTMS/TTSY) L2000, 2100, 2600, 3000 (Y/LS/SY/LSY) - SKT200, 250 (TTSY) - SKT250, 300 (LM/LMS/M/MS)
- **MAXIS:** BMT65
- **SAMSUNG SMEC:** SL25/35 - PL20/25/35M - PL35LM - PL2000/2500M - SL3500 (Y)
- **VICTOR:** VTURN-A26 (CM / SCM / YCM / YSCM)
- **TONGAI:** TMT200


 TIPO - TYPE
Stelo quadro assiale
 Axial face and cutting holder


Code	W	
T.BMT.65B12020H	20	
T.BMT.65B12525H	25	


 TIPO - TYPE
Stelo quadro radiale doppio
 2 RD face and cutting holder


Code	W	
T.BMT.65C1D2020H	20	
T.BMT.65C1D2525H	25	


 TIPO - TYPE
Stelo quadro radiale
 Radial face and cutting holder


Code	W	
T.BMT.65C12020H	20	
T.BMT.65C12525H	25	

6

BMT 45 - 55 - 65 - 75 - 85

BMT45 Ø20-Ø32



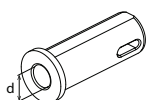
Code

T.BMT.45BB3265H

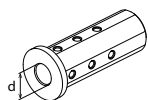


Code

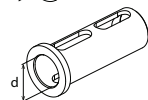
T.BMT.45BBD20H



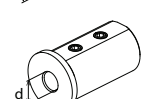
Ød	Code
Ø32	T.B.F32.MT1
Ø32	T.B.F32.MT2



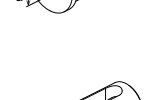
Ø8	T.B.A3208G
Ø10	T.B.A3210G
Ø12	T.B.A3212G
Ø16	T.B.A3216G
Ø20	T.B.A3220G



Ø25	T.B.B3225G
-----	------------



Ø16	T.B.D3216K
Ø20	T.B.D3220K
Ø25	T.B.D3225K



Ø8	T.B.E2008K
Ø10	T.B.E2010K
Ø12	T.B.E2012K
Ø16	T.B.E2016K
Ø16	T.B.E3216K
Ø20	T.B.E3220K
Ø25	T.B.E3225K

BMT55 Ø40



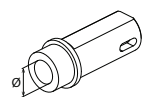
Code

T.BMT.55BB4070H

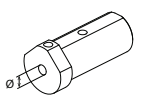


Code

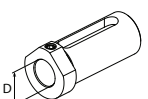
T.BMT.55BBC4060K
T.BMT.55BBC40100K



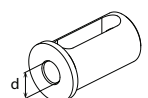
Ød	Code
-	T.B.L.MT1
-	T.B.L.MT2
-	T.B.L.MT3



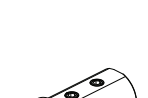
Ød	Code
Ø10	T.B.M4010G
Ø12	T.B.M4012G
Ø16	T.B.M4016G



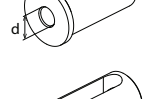
Ød	Code
Ø20	T.B.DS14020G
Ø25	T.B.DS14025G
Ø32	T.B.DS14032G



Ød	Code
Ø20	T.B.DS24020G
Ø25	T.B.DS24025G
Ø32	T.B.DS24032G



Ød	Code
Ø8	T.B.C4008K
Ø10	T.B.C4010K
Ø12	T.B.C4012K



Ød	Code
Ø16	T.B.D.4016K
Ø20	T.B.D.4020K
Ø25	T.B.D.4025K
Ø32	T.B.D.4032K



Ød	Code
Ø16	T.B.E4016G
Ø20	T.B.E4020G
Ø25	T.B.E4025G
Ø32	T.B.E4032G

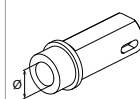
DOOSAN / HARDINGE / SAMSUNG / HWACHEON
HYUNDAI WIA / VICTOR / HAAS / GOODWAY / JYOTI

BMT65/75 Ø40/50

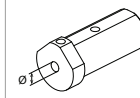


Code

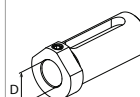
T.BMT.65BBC4072H
T.BMT.65BBC40100H



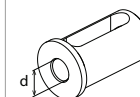
Ød	Code
-	T.B.L.MT1
-	T.B.L.MT2
-	T.B.L.MT3



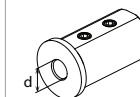
Ød	Code
Ø10	T.B.M4010G
Ø12	T.B.M4012G
Ø16	T.B.M4016G



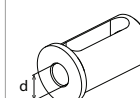
Ød	Code
Ø20	T.B.DS14020G
Ø25	T.B.DS14025G
Ø32	T.B.DS14032G



Ød	Code
Ø20	T.B.DS24020G
Ø25	T.B.DS24025G
Ø32	T.B.DS24032G



Ød	Code
Ø8	T.B.C4008K
Ø10	T.B.C4010K
Ø12	T.B.C4012K



Ød	Code
Ø16	T.B.D.4016K
Ø20	T.B.D.4020K
Ø25	T.B.D.4025K
Ø32	T.B.D.4032K



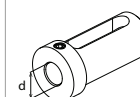
Ød	Code
Ø16	T.B.E4016k
Ø20	T.B.E4020k
Ø25	T.B.E4025k
Ø32	T.B.E4032k

BMT85 Ø60

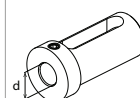


Code

T.BMT.75BBC60110H



Ød	Code
Ø25	T.B.E5025k
Ø32	T.B.E5032k
Ø40	T.B.E5040k



Ød	Code
Ø25	T.B.E6025k
Ø32	T.B.E6032k
Ø40	T.B.E6040k
Ø50	T.B.E6050k

BMT & VDI Static Tools

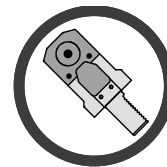
STATIC TOOLS

Portautensili statici per torrette VDI e BMT !

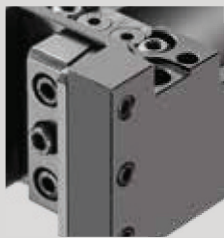
Static tools for VDI & BMT turrets !

Viene proposta un'ampia gamma di modelli adatti ad attrezzare i torni e le torrette dei maggiori costruttori a livello mondiale, come BIGLIA, BMT, DMG MORI, GOODWAY, HAAS, MAZAK, MIYANO, NAKAMURA, OKUMA, TSUGAMI e VDI DIN69880.

The company proposes a wide range of suitable Driven Tools for equipping the lathes turrets by world leader manufacturers, such as BIGLIA, BMT, DMG MORI, GOODWAY, HAAS, MAZAK, MIYANO, NAKAMURA, OKUMA, TSUGAMI and VDI DIN69880.



Maximum precision both for turning and drilling and boring!

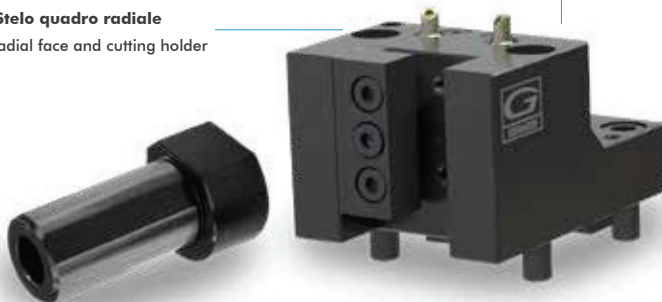


Trattamento anti corrosione
Anti-corrosion treatment

I Portautensili statici sono costruiti con acciaio rettificato altamente legato e sono sottoposti ad un trattamento anti-corrosione


Static toolholders are produced with certified top quality steel and are subjected to an anti-corrosion treatment

BMT Stelo quadro radiale
BMT radial face and cutting holder



BMT Portabareno
BMT Boring bar holder



 **Refrigerante esterno standard**
External Coolant standard



VDI B2 Portautensile radiale Sinistro
VDI B2 Left radial holder



VDI E2 Portabareno
VDI E2 Boring bar holder



Bussole Porta-bareni
Boring bar Sleeves

Le bussole portabareno vengono impiegate su tutte le tipologie di tornio. Possono essere fornite con grani e asole, con battuta, prolungate o ridotte.

The boring bar sleeves are used on all types of lathe. They can be supplied with screw and slot, with collar, extended or reduced.