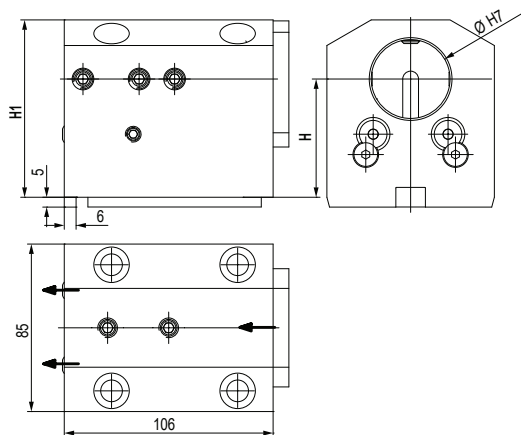


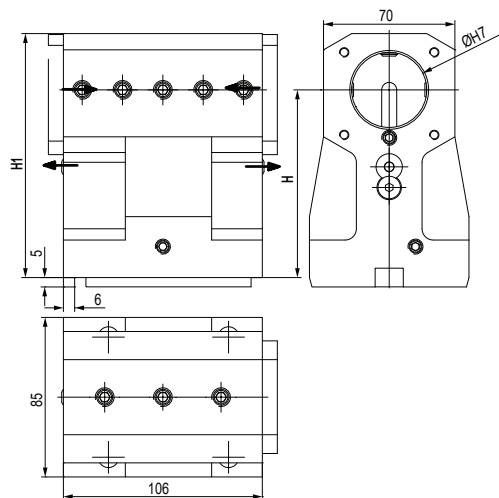
**MODELLI DI TORNIO COMPATIBILI**  
**COMPATIBLE LATHE TYPES**
**DOOSAN**
**HWACHEON**
**HYUNDAI WIA**
**SAMSUNG**
**VICTOR**

Vedi pagine compatibilità 6.4 / 6.5 - See compatibility pages 6.4 / 6.5

**BMT**  
**55**

 TIPO - TYPE  
**Portabareno**  
 Boring bar cutting holder

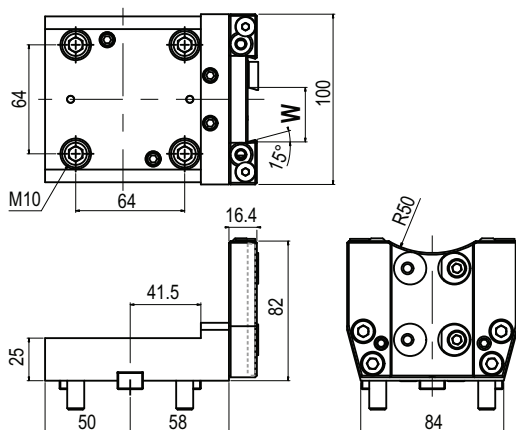
 REFRIGERANTE  
 COOLANT  
**Esterno & Interno**  
 External & Internal

| Code             | Ø  | H       | H1 |  |
|------------------|----|---------|----|--|
| T.BMT.55BBC4060K | 40 | 60±0.02 | 90 |  |


 TIPO - TYPE  
**Portabareno**  
 Boring bar cutting holder

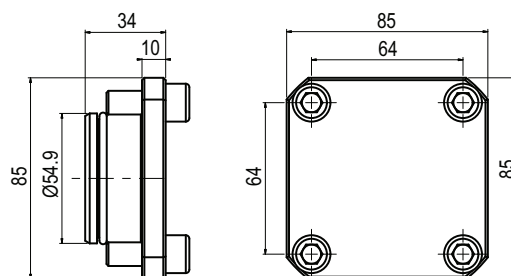
 REFRIGERANTE  
 COOLANT  
**Esterno & Interno**  
 External & Internal

| Code              | Ø  | H        | H1  |  |
|-------------------|----|----------|-----|--|
| T.BMT.55BBC40100K | 40 | 100±0.02 | 130 |  |


 TIPO - TYPE  
**Porta Lama**  
 Cut off holder

 REFRIGERANTE  
 COOLANT  
**Esterno**  
 External

| Code            | W  |  |
|-----------------|----|--|
| T.BMT.55H12600H | 26 |  |
| T.BMT.55H13200H | 32 |  |


 TIPO - TYPE  
**Tappo in acciaio**  
 Steel Turret Cup

| Code            |  |
|-----------------|--|
| T.BMT.55Z10000H |  |

**BMT 45 - 55 - 65 - 75 - 85**

**BMT45 Ø20-Ø32**



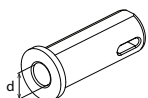
**Code**

T.BMT.45BB3265H

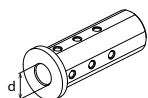


**Code**

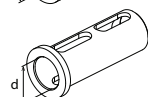
T.BMT.45BBD20H



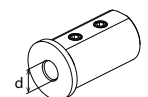
| Ød  | Code        |
|-----|-------------|
| Ø32 | T.B.F32.MT1 |
| Ø32 | T.B.F32.MT2 |



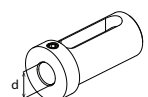
|     |            |
|-----|------------|
| Ø8  | T.B.A3208G |
| Ø10 | T.B.A3210G |
| Ø12 | T.B.A3212G |
| Ø16 | T.B.A3216G |
| Ø20 | T.B.A3220G |



|     |            |
|-----|------------|
| Ø25 | T.B.B3225G |
|-----|------------|



|     |            |
|-----|------------|
| Ø16 | T.B.D3216K |
| Ø20 | T.B.D3220K |
| Ø25 | T.B.D3225K |



|     |            |
|-----|------------|
| Ø8  | T.B.E2008K |
| Ø10 | T.B.E2010K |
| Ø12 | T.B.E2012K |
| Ø16 | T.B.E2016K |
| Ø16 | T.B.E3216K |
| Ø20 | T.B.E3220K |
| Ø25 | T.B.E3225K |

**BMT55 Ø40**



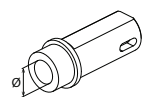
**Code**

T.BMT.55BB4070H

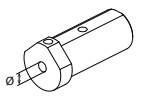


**Code**

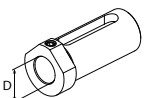
T.BMT.55BBC4060K  
T.BMT.55BBC40100K



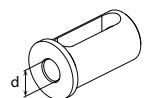
| Ød | Code      |
|----|-----------|
| -  | T.B.L.MT1 |
| -  | T.B.L.MT2 |
| -  | T.B.L.MT3 |



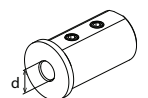
| Ød  | Code       |
|-----|------------|
| Ø10 | T.B.M4010G |
| Ø12 | T.B.M4012G |
| Ø16 | T.B.M4016G |



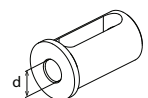
| Ød  | Code         |
|-----|--------------|
| Ø20 | T.B.DS14020G |
| Ø25 | T.B.DS14025G |
| Ø32 | T.B.DS14032G |



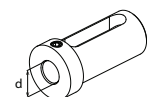
| Ød  | Code         |
|-----|--------------|
| Ø20 | T.B.DS24020G |
| Ø25 | T.B.DS24025G |
| Ø32 | T.B.DS24032G |



| Ød  | Code       |
|-----|------------|
| Ø8  | T.B.C4008K |
| Ø10 | T.B.C4010K |
| Ø12 | T.B.C4012K |



| Ød  | Code        |
|-----|-------------|
| Ø16 | T.B.D.4016K |
| Ø20 | T.B.D.4020K |
| Ø25 | T.B.D.4025K |
| Ø32 | T.B.D.4032K |



| Ød  | Code       |
|-----|------------|
| Ø16 | T.B.E4016G |
| Ø20 | T.B.E4020G |
| Ø25 | T.B.E4025G |
| Ø32 | T.B.E4032G |

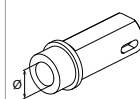
DOOSAN / HARDINGE / SAMSUNG / HWACHEON  
HYUNDAI WIA / VICTOR / HAAS / GOODWAY / JYOTI

**BMT65/75 Ø40/50**

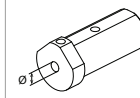


**Code**

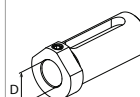
T.BMT.65BBC4072H  
T.BMT.65BBC40100H



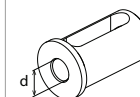
| Ød | Code      |
|----|-----------|
| -  | T.B.L.MT1 |
| -  | T.B.L.MT2 |
| -  | T.B.L.MT3 |



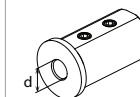
| Ød  | Code       |
|-----|------------|
| Ø10 | T.B.M4010G |
| Ø12 | T.B.M4012G |
| Ø16 | T.B.M4016G |



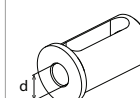
| Ød  | Code         |
|-----|--------------|
| Ø20 | T.B.DS14020G |
| Ø25 | T.B.DS14025G |
| Ø32 | T.B.DS14032G |



| Ød  | Code         |
|-----|--------------|
| Ø20 | T.B.DS24020G |
| Ø25 | T.B.DS24025G |
| Ø32 | T.B.DS24032G |



| Ød  | Code       |
|-----|------------|
| Ø8  | T.B.C4008K |
| Ø10 | T.B.C4010K |
| Ø12 | T.B.C4012K |



| Ød  | Code        |
|-----|-------------|
| Ø16 | T.B.D.4016K |
| Ø20 | T.B.D.4020K |
| Ø25 | T.B.D.4025K |
| Ø32 | T.B.D.4032K |



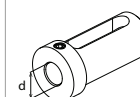
| Ød  | Code       |
|-----|------------|
| Ø16 | T.B.E4016k |
| Ø20 | T.B.E4020k |
| Ø25 | T.B.E4025k |
| Ø32 | T.B.E4032k |

**BMT85 Ø60**

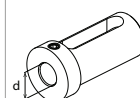


**Code**

T.BMT.75BBC60110H



| Ød  | Code       |
|-----|------------|
| Ø25 | T.B.E5025k |
| Ø32 | T.B.E5032k |
| Ø40 | T.B.E5040k |



| Ød  | Code       |
|-----|------------|
| Ø25 | T.B.E6025k |
| Ø32 | T.B.E6032k |
| Ø40 | T.B.E6040k |
| Ø50 | T.B.E6050k |

## BMT & VDI Static Tools

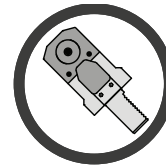
# STATIC TOOLS

### Portautensili statici per torrette VDI e BMT !

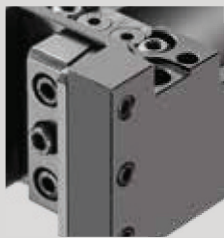
#### Static tools for VDI & BMT turrets !

Viene proposta un'ampia gamma di modelli adatti ad attrezzare i torni e le torrette dei maggiori costruttori a livello mondiale, come BIGLIA, BMT, DMG MORI, GOODWAY, HAAS, MAZAK, MIYANO, NAKAMURA, OKUMA, TSUGAMI e VDI DIN69880.

The company proposes a wide range of suitable Driven Tools for equipping the lathes turrets by world leader manufacturers, such as BIGLIA, BMT, DMG MORI, GOODWAY, HAAS, MAZAK, MIYANO, NAKAMURA, OKUMA, TSUGAMI and VDI DIN69880.



*Maximum precision both for turning and drilling and boring!*



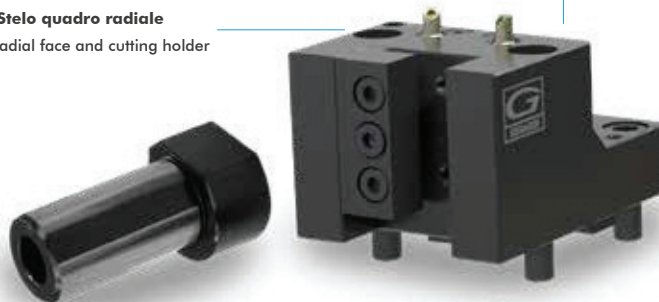
#### Treatment anti corrosion Anti-corrosion treatment

I Portautensili statici sono costruiti con acciaio rettificato altamente legato e sono sottoposti ad un trattamento anti-corrosione

Static toolholders are produced with certified top quality steel and are subjected to an anti-corrosion treatment

#### BMT Stelo quadro radiale

BMT radial face and cutting holder



#### BMT Portabareno

BMT Boring bar holder



Refrigerante esterno standard  
External Coolant standard



VDI B2 Portautensile radiale Sinistro  
VDI B2 Left radial holder



VDI E2 Portabareno  
VDI E2 Boring bar holder



#### Bussole Porta-bareni Boring bar Sleeves

Le bussole portabareno vengono impiegate su tutte le tipologie di tornio. Possono essere fornite con grani e asole, con battuta, prolungate o ridotte.

The boring bar sleeves are used on all types of lathe. They can be supplied with screw and slot, with collar, extended or reduced.