

Tipo (grandezza) morsa / Vise type (size)
Art. 640

 Tipo / Type **1 e 2**

 Morsa autocentrante o eccentrica.
 Azionamento manuale.
 Serraggio meccanico

 Self-centering or eccentric vise.
 Manual operation
 Mechanical clamping

kN	1 16 kN	2 20 kN
A	65	95
A1	20	40
W	74	99
B	15	20
C	50	70
D	Ø120	Ø160
E	35	35
F	92	120
G	20	25
H	156	208
L	M12	M16
M	9	11
kg	4,9	11
Cod.	6.64.01000	6.64.02000

AMPLIA LE TUE APPLICAZIONI TRAMITE GLI ACCESSORI MODULARI !
Art. 641H

 Tipo / Type **1**

 Rialzo Semplice
 Simple Riser

B	50	75	100
Cod.	7.64.1H100AL /50	7.64.1H100AL /75	7.64.1H100AL /100

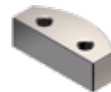
 Kit di fissaggio e allineamento morsa **incluso** - Vise fixing and alignment kit **included**
Art. 641H

 Tipo / Type **2**

 Rialzo Semplice
 Simple Riser

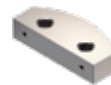
B	50	75	100
Cod.	7.64.1H200AL /50	7.64.1H200AL /75	7.64.1H200AL /100

 Kit di fissaggio e allineamento morsa **incluso** - Vise fixing and alignment kit **included**
Art. 645B

 Ganascia dolce
 Soft jaw


Cod.	6.64.5B100	6.64.5B200
------	------------	------------

Art. 645C

 Ganascia liscia
 Smooth jaw


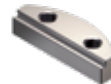
Cod.	6.64.5C100	6.64.5C200
------	------------	------------

Art. 645D

 Ganascia zigrinata
 Serrated jaw


Cod.	6.64.5D100	6.64.5D200
------	------------	------------

Art. 645E

 Ganascia a gradino
 Step jaw


Cod.	6.64.5E100	6.64.5E200
------	------------	------------

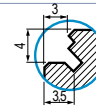
In Dotazione - Standard Equipment

Art. 645F

 Ganascia prismatica
 Prismatic jaw


Cod.	6.64.5F100	6.64.5F200
------	------------	------------

Art. 645T

 Ganascia **GRIP**
GRIP jaw


Cod.	6.64.5T100	6.64.5T200
------	------------	------------

Dotazione standard:

- 1 chiave esagonale Art. 375 ■ 1 arresto laterale Art. 370
- 1 coppia di tasselli di posizionamento Art. 297
- 1 perno calibrato per centraggio Art. 640P*

*(Indicare dimensione in fase d'ordine)



Standard equipment:

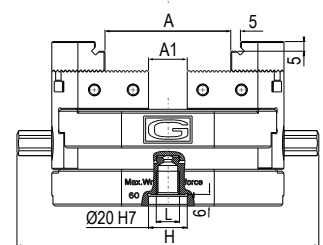
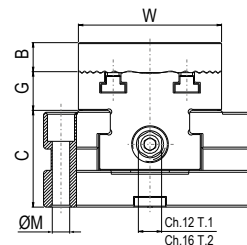
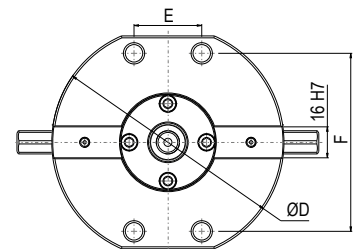
- 1 esagonal wrench Art. 375 ■ 1 workstop Art. 370
- 1 pair of positioning key-nuts Art. 297
- 1 calibrated centering pin Art. 640P*

*(Dimension to be advised at order)

Art. 640

 Tipo / Type **1 e 2**

 Esempio di ordine: Art. 640 tipo 1
 (Art.297 18mm + Art.640P 40mm)

 Example of order: Art. 640 type 1
 (Art.297 18mm + Art.640P 40mm)


Tipo (grandezza) morsa
Vise type (size)

Art. 640 *Tipo / Type 3 x 166*

Morsa autocentrante o eccentrica.
Azionamento manuale.
Serraggio meccanico



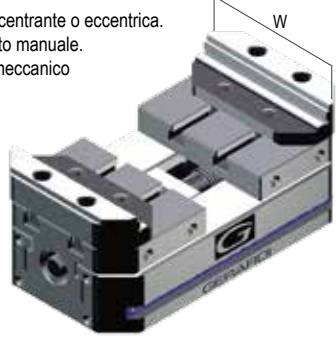
kN	30 kN
A	108
A1	20
W	138
B	30
C	58
D	166
E	-
kg	13
Cod.	7.64.03166

Self-centering or eccentric vise.
Manual operation
Mechanical clamping

Tipo (grandezza) morsa
Vise type (size)

Art. 640 *Tipo / Type 3 x 266*

Morsa autocentrante o eccentrica.
Azionamento manuale.
Serraggio meccanico



kN	30 kN
A	208
A1	60
W	138
B	30
C	58
D	266
E	200
kg	20
Cod.	7.64.03266

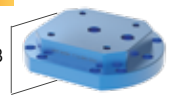
Self-centering or eccentric vise.
Manual operation
Mechanical clamping

UPGRADE YOUR VISE APPLICATIONS THROUGH MODULAR ACCESSORIES !

Art. 641H

Tipo / Type 3 x 166

Rialzo Semplice
Simple Riser



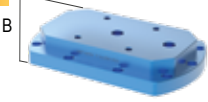
B	50	75	100
Cod.	7.64.1H3166AL /50	7.64.1H3166AL /75	7.64.1H3166AL /100

Kit di fissaggio e allineamento morsa **incluso** - Vise fixing and alignment kit **included**

Art. 641H





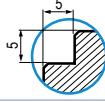


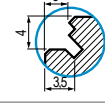
Tipo / Type 3 x 266

Rialzo Semplice
Simple Riser



B	50	75	100
Cod.	7.64.1H3266AL /50	7.64.1H3266AL /75	7.64.1H3266AL /100

Kit di fissaggio e allineamento morsa **incluso** - Vise fixing and alignment kit **included**

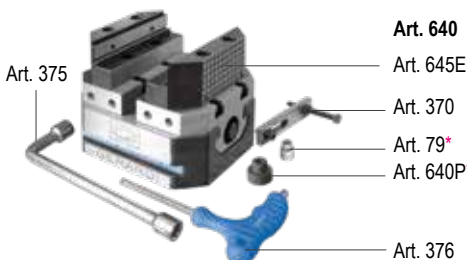
Art. 645B Ganascia dolce Soft jaw		Cod.	7.64.5B300
Art. 645C Ganascia liscia Smooth jaw		Cod.	7.64.5C300
Art. 645D Ganascia zigrinata Serrated jaw		Cod.	7.64.5D300
Art. 645E Ganascia a gradino Step jaw	 	Cod.	7.64.5E300
Art. 645F Ganascia prismatica Prismatic jaw		Cod.	7.64.5F300
Art. 645T Ganascia GRIP GRIP jaw	 	Cod.	7.64.5T300

In Dotazione - Standard Equipment

Dotazione standard:

- 1 chiave a pipa Art. 375 ■ 1 chiave a "T" Art. 376
- 1 arresto laterale Art. 370 ■ 1 perno calibrato per centraggio e orientamento Art. 79* ■ 1 perno calibrato per centraggio Art. 640P*

*(Indicare dimensione in fase d'ordine)



Standard equipment:

- 1 box wrench Art. 375 ■ 1 "T" wrench Art. 376
- 1 workstop Art. 370 ■ 1 calibrated centering and orientation pin Art. 79*
- 1 calibrated centering pin Art. 640P*

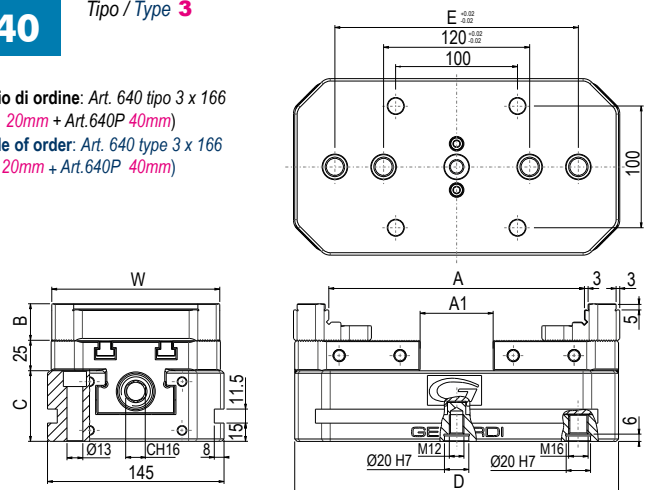
*(Dimension to be advised at order)

Art. 640

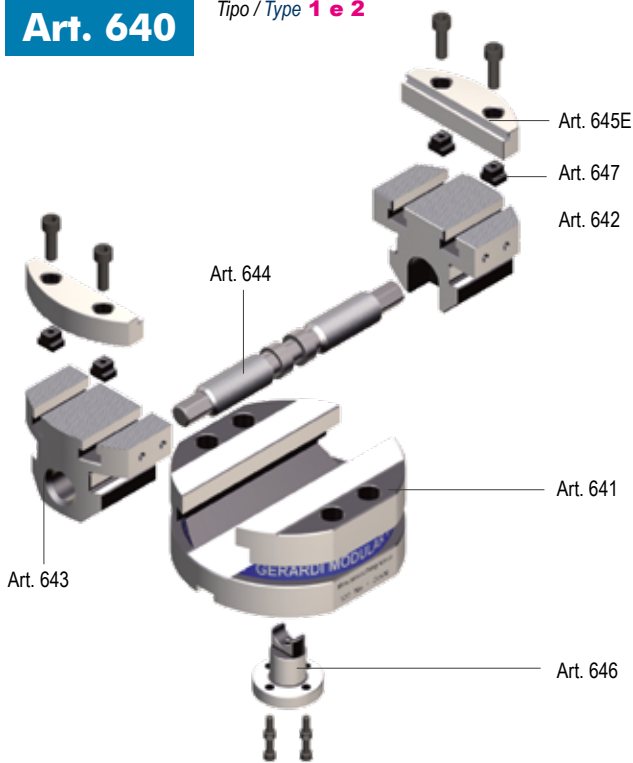
Tipo / Type 3

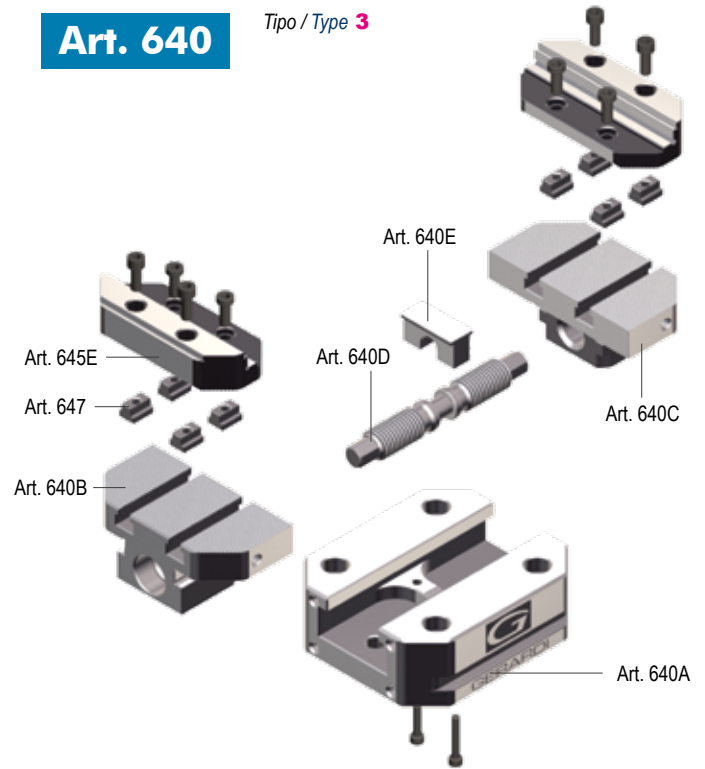


Esempio di ordine: Art. 640 tipo 3 x 166
(Art. 79 20mm + Art. 640P 40mm)
Example of order: Art. 640 type 3 x 166
(Art. 79 20mm + Art. 640P 40mm)



Art. 640

 Tipo / Type **1 e 2**

Art. 640

 Tipo / Type **3**


Tipo (grandezza) / Type (size)	1	2
--------------------------------	---	---

Art. 641

 Corpo base
 Base body

Cod. 6.64.11000 6.64.12000

Tipo (grandezza) / Type (size)	3x166	3x266
--------------------------------	-------	-------

Art. 640A

 Corpo base
 Base body

Cod. 7.64.0A3166 7.64.0A3266

Art. 642

 Slitta integrale destra
 Solid slide right hand

Cod. 6.64.21000 6.64.22000

Art. 640B

 Slitta integrale sinistra
 Solid slide left hand

Cod. 7.64.0B3166 7.64.0B3266

Art. 643

 Slitta integrale sinistra
 Solid slide left hand

Cod. 6.64.31000 6.64.32000

Art. 640C

 Slitta integrale destra
 Solid slide right hand

Cod. 7.64.0C3166 7.64.0C3266

Art. 644

 Vite di bloccaggio
 Main screw

Cod. 6.64.41000 6.64.42000

Art. 640D

 Vite di bloccaggio
 Main screw

Cod. 7.64.0D3166 7.64.0D3266

Art. 645E

 Ganascia a gradino
 Step jaw

Cod. 6.64.5E100 6.64.5E200

Art. 640E

 Forcella
 Yoke

Cod. 7.64.0E3166 7.64.0E3266

Art. 646

 Forcella
 Yoke

Cod. 6.64.61000 6.64.62000

Art. 645E

 Ganascia a gradino
 Step jaw

Cod. 7.64.5E300

Art. 647

 Dado a T (Cad.)
 T nut (Each)

Cod. 6.64.71000 6.64.72000

Art. 647

 Dado a T (Cad.)
 T nut (Each)

Cod. 7.64.73000

GANASCE PER MORSE MULTITASKING Art.640

JAWS FOR MULTITASKING VISES Art.640

Tipo (grandezza) / Type (size)	1	2	3
	B: 15 Y: 27,5 W: 74	B: 20 Y: 32,5 W: 99	B: 30 Y: 50 W: 138
Art. 645B* Ganascia dolce Soft jaw	K: 20 X: 27,5 Cod.: 6.64.5B100	K: 30 X: 42,5 Cod.: 6.64.5B200	K: 50 Cod.: 7.64.5B300
Art. 645C* Ganascia liscia Smooth jaw	Cod.: 6.64.5C100	Cod.: 6.64.5C200	Cod.: 7.64.5C300
Art. 645D* Ganascia zigrinata Serrated jaw	Cod.: 6.64.5D100	Cod.: 6.64.5D200	Cod.: 7.64.5D300
Art. 645E* Ganascia a gradino Step jaw	Cod.: 6.64.5E100	Cod.: 6.64.5E200	Cod.: 7.64.5E300
Art. 645F* Ganascia prismatica Prismatic jaw	ØA: 7 ÷ 15 ØM: 25 ÷ 70 Cod.: 6.64.5F100	ØA: 9 ÷ 20 ØM: 35 ÷ 110 Cod.: 6.64.5F200	ØA: 12 ÷ 30 ØM: 50 ÷ 160 Cod.: 7.64.5F300
Art. 645T* Ganascia GRIP Jaw	Cod.: 6.64.5T100	Cod.: 6.64.5T200	Cod.: 7.64.5T300

* Viti per fissaggio a richiesta Fixing screws on request

Tipo (grandezza) / Type (size)	1	2	3
Art. 79 Perno calibrato per centraggio e orientamento Calibrated centering and orientation pin	ØB: - Cod.: -	ØB: - Cod.: -	10-12-14-16-18-20 Cod.: 7.79.20M16/ØB
Art. 297 Coppia di tasselli di posizionamento completi di vite M5 x 10 Pair of positioning key-nuts with M5 x 10 clamping screw	B: 10 - 12 - 14 - 16 - 18 - 20 - 22 - 24 - 28 - 36 Cod.: 2.29.71000/B		
Art. 640P Perno calibrato per centraggio Calibrated centering pin	ØB: 20 - 30 - 38,1 - 50 - 50,8 Cod.: 7.64.0P100	ØB: 7.64.0P200	ØB: 7.64.0P300

* Specificare sempre quota B - Specify always B dimension

Multitasking & CompactGrip vises

MULTITASKING

Morse autocentranti per applicazioni avanzate su centri a 5 assi

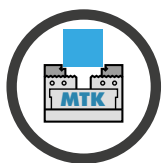
Vises for advanced applications on 5 axis machining centres



Precisione / Accuracy
 $\pm 0,02\text{mm}$



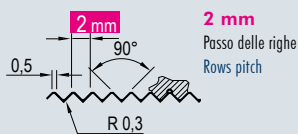
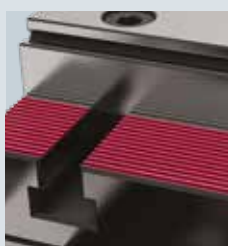
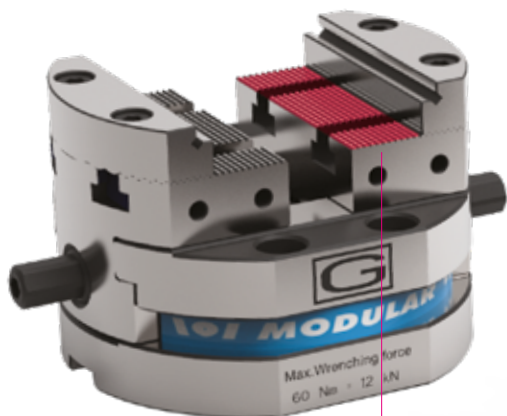
Durezza / Hardened
HRC 58 \pm 2



Multitasking

Le Tonde
 The Rounded

Art. 640



Posizionamento delle ganasce in qualsiasi posizione della dentatura della base.

Possibility the jaws on whatever positioning on the vise base.

Ganasce da 74 a 140 mm. Ancoraggio diretto o tramite staffe / Posizionamento tramite fori calibrati o chiavette / Eccentriche: possibilità di disassamento centraggio per multipli di 1 mm (Auto-centraggio fuori asse) / Autocentranti con serraggi concentrici dall'esterno all'interno e viceversa / Minimi ingombri e massima rigidità / Costruzione solida e compatta a massima apertura rispetto agli ingombri / Disponibili serie di ganasce intercambiabili / Ganasce integrali per massima rigidità

Jaws widths from 75 to 140 mm. Direct vise set-up or through vise clamps / Positioning through ground holes or keyways / Self-centering with possibility to clamping from outside to inside and viceversa / Eccentric jaw adjustment in steps of 1 mm (Multiaxis self-centering) / Minimum deflection and overall dimensions / Solid and rigid construction and maximum clamping ratio to the total length / Series of interchangeable jaws available / Solid jaws (integral with the slides) for highest rigidity



Versatilità Ampia Gamma Di Inserti

*Versatility
 Ampia Gamma Di Inserti*

Inserti riportati utilizzabili da entrambi i lati. Grande versatilità ottenuta attraverso la possibilità di sostituire gli Inserti GRIP con diversi tipi di dentatura in modo facile e veloce (da utilizzare a seconda del materiale da lavorare).

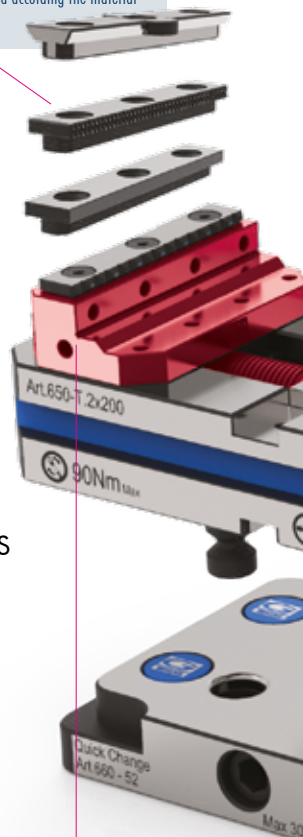
Inserts to be used on both sides Another advantage will be the greatest versatility thanks to easiest and quickest GRIP top jaw inserts exchange with different types of teeth design to be used according the material to be clamped

CARATTERISTICHE & VANTAGGI

- ✓ USURA INESISTENTE
- ✓ RAPIDITA' DEI SERRAGGI
- ✓ MODULARITA' & VERSATILITA'
- ✓ PRECISIONI $\pm 0,02$ mm
- ✓ RIGIDITA' & SICUREZZA
- ✓ DESIGN COMPATTO E MANEGGEVOLEZZA
- ✓ AUTOCENTRANTI
- ✓ PREDISPOSIZIONE PER ZERO POINT
- ✓ RIALZI COMPATIBILI

TECHNICAL FEATURES & ADVANTAGES

- ✓ NO WEAR
- ✓ QUICK CLAMPING
- ✓ MODULARITY & VERSATILITY
- ✓ HIGHEST ACCURACIES $\pm 0,02$ mm
- ✓ RIGIDITY & SAFETY
- ✓ SELF-CENTERING
- ✓ ZERO POINT READY
- ✓ COMPATIBLE RISERS



Ganasce Reversibili MONOBLOCCO

**SOLID GUIDED
 Reversible Jaws**



Versatilità grazie alle ganasce MONOBLOCCO reversibili e alle 4 opzioni di posizionamento della base (90°) ed ai fori frontali passanti.

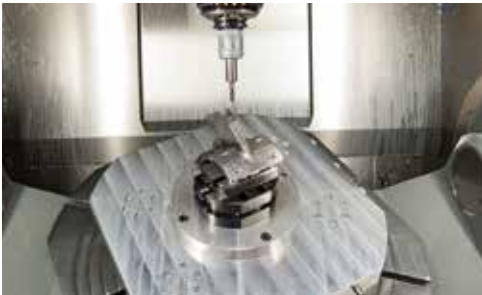
Versatility also thanks to the SOLID GUIDED reversible jaws and to the 4 base positions option (90°) and to the front through holes.

Soluzioni personalizzate / Customized solutions

4th & 5th Axis

Soluzioni personalizzate a tutti i vostri problemi di serraggio

Customized solutions for all your clamping problems

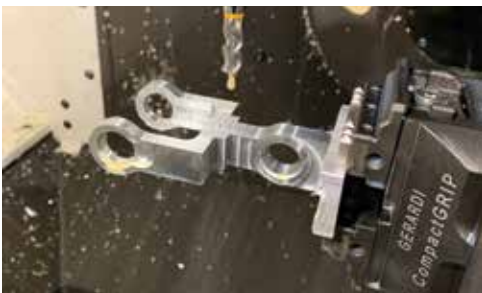


Morsa Multitasking su centro a 5 assi

Multitasking vise on 5th axis machining center

Applicazione aeronautica, morsa Art.640 tipo 2 montata su macchina a 5 assi

Typical Multitasking vise Art.640 type 2 application on a 5 axis machine for aerospace workpiece

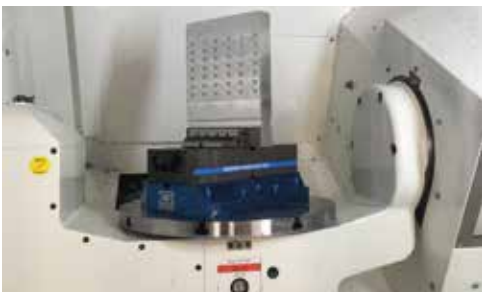


Morsa CompactGrip su centro a 5 assi

CompactGrip vise on 5th axis machining center

Lavorazioni di fresatura effettuate su di un centro di lavoro a cinque assi con morsa CompactGrip Art.650

Milling machining operations on a five axis machining center with CompactGrip vises Art.650



Morsa CompactGrip su rialzo semplice

Compact Grip vise on simple riser

Morsa CompactGrip montata su Kitamura Mytrunnion 4G per la lavorazione di uno stampo nel settore plastica.

Compact Grip vise on Kitamura Mytrunnion-4G for machining a die mould used in the plastic industry



Morse CompactGrip su piastra Zero Point

CompactGrip vises on Zero Point plate

Piastra base con 6 Zero Point singoli per morsa CompactGrip Art.650 T2 per lavorazioni di piccoli particolari

Zero Point plate with 6 single Zero Point units for CompactGrip vises Art.650 T2 for small workpieces machining.



Un sistema completamente automatico

Fully automatic system

Morsa automatica GripMatic Art.670PN montata tramite robot su tavola Zero Point.

GripMatic automatic vises Art.670PN mounted by robot on Zero Point Plate