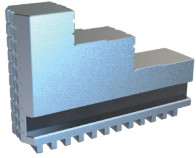
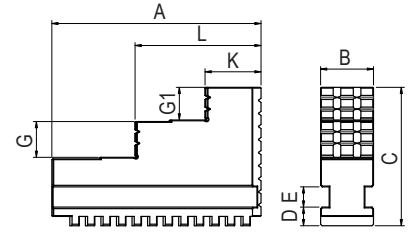


# GRIFFE SINGOLA GUIDA

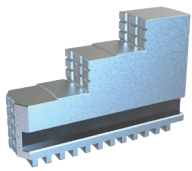
## Single Guide Jaws



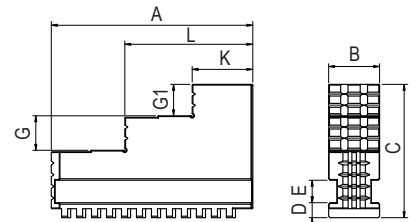
**Griffe temprate integrali - Serraggio ESTERNO-INTERNO**  
 Integral temprate jaws guide - EXTERNAL-INTERNAL clamping



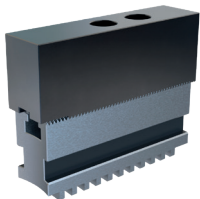
Size	Ø160
A	66
B	18
C	42
D	8
E	8
G	10
G1	9
K	20
L	42
Code	GGI-160-3S00



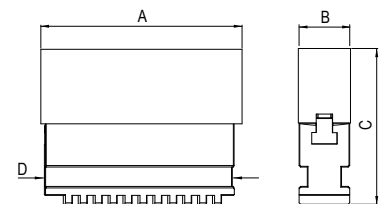
**Griffe temprate integrali - Serraggio ESTERNO**  
 Integral temprate jaws guide - EXTERNAL clamping



Size	Ø160
A	66
B	18
C	43
D	8
E	8
G	10
G1	9
K	20
L	42
Code	GGE-160-3S00



**Griffe riportate, lavorabili**  
 Machineable jaws



Size	Ø160
A	80
B	20
C	60
D	65,5
Code	GGs-160-3S00

## Mandrini autocentranti / Self-centering chucks

# DUODUX


 Precisione / Accuracy  
**±0,02mm**

 Durezza / Hardened  
**EN GJL 250**

### Mandrini autocentranti a doppia e singola guida

Single and double guide self-centering chucks

#### COLLAUDO / INSPECTION

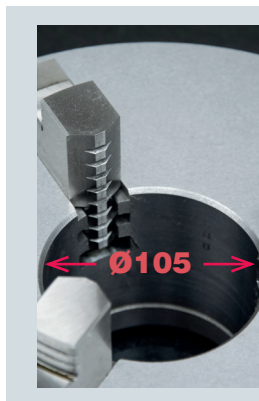
Ogni autocentrante DUO-DUX viene equilibrato secondo la norma ISO3089/74, testato singolarmente e fornito di apposito certificato di collaudo e garanzia. Gli autocentranti di diametro 365 e 430mm, indicati per lavorazioni pesanti, conservano al contempo le stesse doti tecniche di precisione dei mandrini di minor diametro.

Every DUO-DUX chuck is balanced following the ISO3089/74 rules and supplied with the warranty and testing certificates. The chucks with diameter 365 and 430mm, suitable for heavy-duty machinings, keep the same technical features and precision of the chucks with lower diameters.

#### GARANZIA / WARRANTY

Sicuri dell'affidabilità e dell'elevata qualità dei componenti impiegati per la realizzazione degli autocentranti DuoDux riconosciamo 5 anni di garanzia sull'intera gamma.

Sure of the reliability and high quality of all self-centering vises DuoDux components, we recognize 5 years warranty on the whole range.

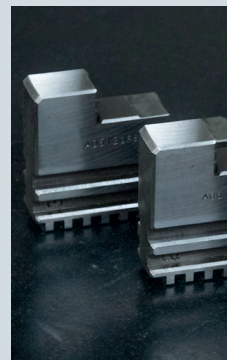


#### Versione Speciale Ø270-105

Special Model Ø270-105

Oltre ai diametri della gamma standard è disponibile una versione speciale con Ø270 e passaggio barra maggiorato Ø105. Codice: GDD-270-3G20-105

Not only standard dimensions: a special Ø270mm version with increased bar holder Ø105 is available too. Code: GDD-270-3G20-105



#### Griffe integrali

Integral jaws

Le griffe integrali per il serraggio sono realizzate in acciaio al nichel-cromo cementato, temprato e rettificato a garantire elevata precisione e ripetibilità.

Integral clamping jaws are made of hardened nichel-chrome steel for the highest accuracy and repeatability.

#### MODELLI DISPONIBILI A RICHIESTA

AVAILABLE MODELS ON REQUEST

Disponibili altre versioni (A RICHIESTA):

- Mandrini autocentranti manuali a **3 GRIFFE** Ø130 a **guida singola** 2 SET (3+3) e 3SET (3+3+3)
- Mandrini autocentranti manuali a **4 GRIFFE** Ø130-Ø160 a **guida singola** 2SET (4+4) e 3SET (4+4+4)
- Mandrini autocentranti manuali a **4 GRIFFE** Ø200-Ø230-Ø250-Ø270-Ø310 a **doppia guida** 2SET (4+4) e 3SET (4+4+4)

Other versions available (ON REQUEST):

- Manual self-centering chucks with **3 JAWS** Ø130 with **single guide** 2 SET (3+3) and 3SET (3+3+3)
- Manual self-centering chucks with **4 JAWS** Ø130-Ø160 with **single guide** 2SET (4+4) and 3SET (4+4+4)
- Manual self-centering chucks with **4 JAWS** Ø200-Ø230-Ø250-Ø270-Ø310 with **double guide** 2SET (4+4) and 3SET (4+4+4)

#### CORONA, GRIFFE E PIGNONE:

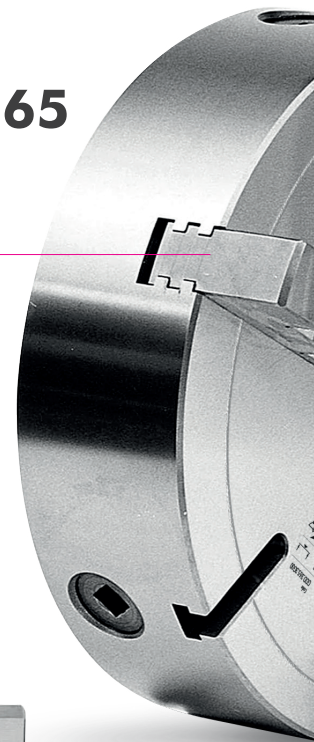
SCROLL, JAWS AND PINIONS:

Corona griffe e pignone sono fabbricati in acciaio al nichel-cromo cementato temprato ed interamente rettificati.

Scroll, jaws and pinions in fully ground, casehardened and heat treated chrome-nickel steel.

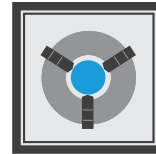
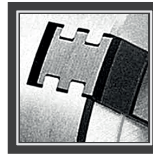


Ø365



DUO-DUX, il mandrino autocentrante manuale a doppia guida 100% Made in Italy. Composto da griffe integrali a guida doppia in grado di sopportare maggiori carichi di lavoro e garantire una maggior stabilità. La corona è rettificata con uno speciale metodo da noi sviluppato atto a garantire elevata precisione e ripetibilità.

DUO-DUX, the double guide self-centering manual chuck 100% Made in Italy. It is made with double guided integral jaws, which can stand heavier charges and grant a better stability. The crown is ground with a special way studied by Gerardi to grant highest precision and repeatability.



*Precisione, rigidità e stabilità!*  
*Accuracy, rigidity & stability!*



**Doppia Guida**  
*Double guide*

Il sistema a doppia guida degli autocentranti DuoDux è in grado di sopportare maggiori carichi di lavoro e garantire maggior stabilità.

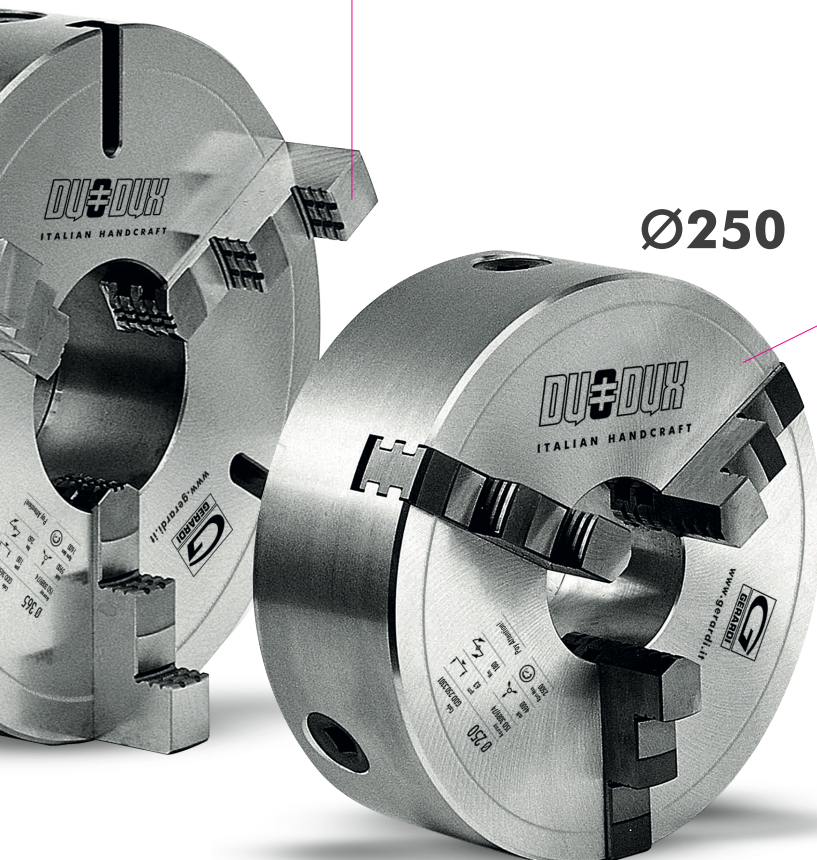
Double guide system of our Duo Dux self-centering vises can bear higher workload and grant a higher stability.



**Durezza corpo**  
*Solid body*


Corpo in fusione monoblocco di ghisa ad Alta Resistenza. Corona con spirale completamente rettificata!

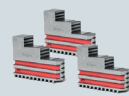
Solid high-resistance cast iron body. Ground spiral crown!




**100%**  
**MADE IN ITALY**

**Dotazione Standard**  
*Standard Equipment*

**3** + 

**3** + 

**1** + 

- Set da **3** Griffe con presa INTERNA
- Set da **3** Griffe con presa ESTERNA
- **1** Chiave mandrino per apertura Griffe
- Set made by **3** INTERNAL clamp jaws
- Set made by **3** EXTERNAL clamp jaws
- **1** Chiave mandrino per apertura griffe