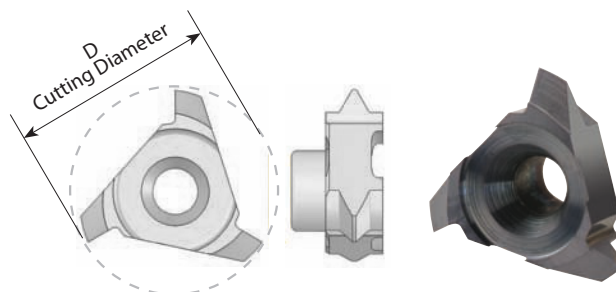


## Partial Profile 55° - BSP(G), BSF, BSW

Same insert for internal and external thread

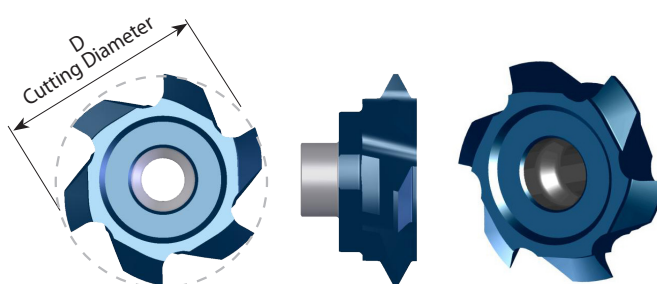


Insert Type	Ordering Code	Pitch Range TPI	D	Thread Dia. (min)	Holder Code*
C10	<b>C10 G55</b>	19-14	10.0	$\text{Ø} \geq 13$	H1, 2, 15, 17
C12	<b>C12 G55</b>	28-19	12.0	$\text{Ø} \geq 14$	H3, 3.1, 4, 5, 18, 19, 20
	<b>C12 N55</b>	14-11	12.2	$\text{Ø} \geq 16$	H3, 4, 5, 18, 20
C18	<b>C18 G55</b>	14-8	18.0	$\text{Ø} \geq 23$	H5.1, 5.2, 21
C25	<b>C25 N55</b>	7-5	25.0	$\text{Ø} \geq 31$	H10, 11, 24, 25

## Partial Profile 55° - BSP(G), BSF, BSW

Same insert for internal and external thread

Multi Flute



Insert Type	Ordering Code	Pitch Range TPI	D	No. of Flutes	Thread Dia (min)	Holder Code*
S17	<b>S170 F G55</b>	11-8	17.0	6	$\text{Ø} \geq 18.5$	H3, 3.1, 4, 5, 18, 19, 20
S20	<b>S195 F G55</b>	14	19.5	6	$\text{Ø} \geq 23$	H5.1, 5.2, 6, 7, 8, 9, 21, 22, 23
	<b>S200 D N55</b>	8-6	20.0	4	$\text{Ø} \geq 25$	

\* For complete toolholder description see pages B07-22 and 23

# CMT Vertical Milling

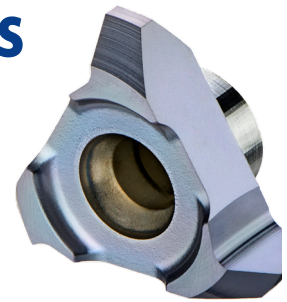
## Advantages

- Ground profile inserts for high precision and excellent performance.
- Working at high machining parameters, with high surface quality.
- Solid and accurate clamping method enables full repeatability.
- Same insert and holder for right-hand or left-hand threads.
- Toolholders include weldon shank and coolant bore.

## CMT Straight Flute Inserts

### Carbide Grade: MT7

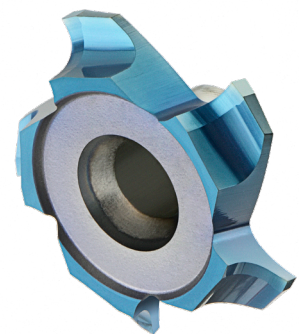
Inserts are available in MT7 Sub-Micron Grade with Titanium Aluminum Nitride multi-layer coating (ISO K10 - K20). This is a general purpose grade, covering a very wide range of materials.



## CMT Spiral Multi Flute Inserts

- Multi flute: 4-8 cutting edges
- Spiral flute for smooth cutting

The new cutters are designed for large range of materials including hardened steel up to 62 HRc.



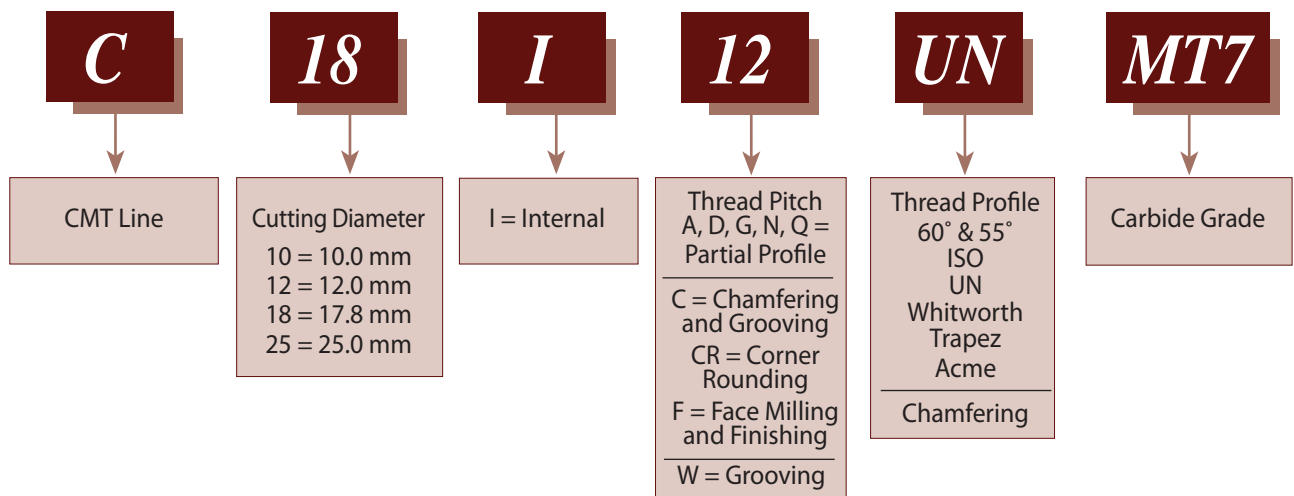
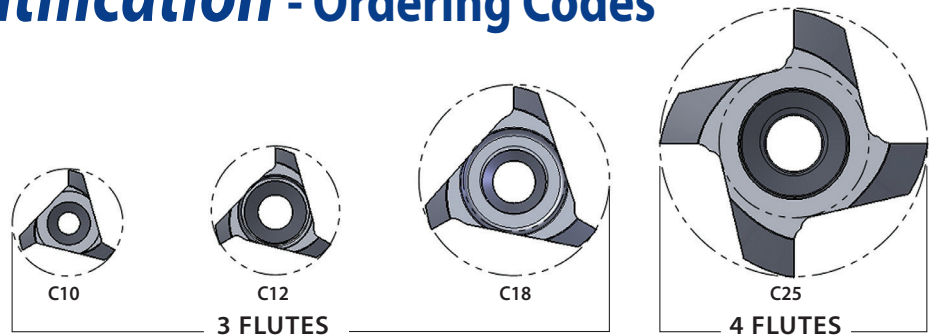
### Advantages

- Longer tool life
- High material removal and higher feeds results increased productivity
- Excellent surface finish
- Reduced cycle time
- Low cutting forces due to the spiral multi flutes

### Carbide Grade: MT8

Sub Micron grade with advanced PVD triple coating (ISO K10-K20). Extremely high heat resistant and smooth cutting operation, high performance, for all machining conditions.

## Product Identification - Ordering Codes



## CMT Spiral Multi Flute Inserts

