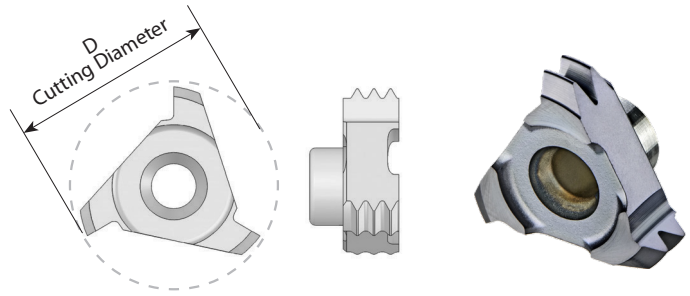


## Full Profile - ISO

Inserts for internal thread



Insert Type	Ordering Code	Pitch mm	M coarse	M fine	Number of Teeth	D	Holder Code*
C10	<b>C10 I 0.5 ISO</b>	0.5		M10, M12	6	9.0	H1, 1.1, 2, 15, 16, 17
	<b>C10 I 0.75 ISO</b>	0.75		M12	4	10.0	
	<b>C10 I 1.0 ISO</b>	1.0		M12, M13	3	10.0	
	<b>C10 I 1.5 ISO</b>	1.5		M13, M14	2	10.0	
	<b>C10 I 1.75 ISO</b>	1.75	M12		1	9.6	H1, 2, 15, 17
	<b>C10 I 2.0 ISO</b>	2.0	M14	M18	1	10.0	
C12	<b>C12 I 0.5 ISO</b>	0.5		M13-M18	6	12.0	H3, 3.1, 4, 5, 18, 19, 20
	<b>C12 I 0.75 ISO</b>	0.75		M13-M18	4	12.0	
	<b>C12 I 1.0 ISO</b>	1.0		M14-M19	3	12.0	
	<b>C12 I 1.5 ISO</b>	1.5		M15-M19	2	12.0	
	<b>C12 I 2.0 ISO</b>	2.0	M16	M18, M20	1	12.4	H3, 4, 5, 18, 20
	<b>C12 I 2.5 ISO</b>	2.5	M18, M20		1	12.0	
	<b>C12 I 3.0 ISO</b>	3.0	M24		1	12.4	
C18	<b>C18 I 0.5 ISO</b>	0.5		M19-M60	9	17.8	H5.1, 5.2, 6, 7, 8, 9, 21, 22, 23
	<b>C18 I 0.75 ISO</b>	0.75		M19-M60	6	17.8	
	<b>C18 I 1.0 ISO</b>	1.0		M20-M60	5	17.8	
	<b>C18 I 1.5 ISO</b>	1.5		M20-M60	3	17.8	
	<b>C18 I 2.0 ISO</b>	2.0		M21-M60	2	17.8	
	<b>C18 I 2.5 ISO</b>	2.5	M22		2	17.8	
	<b>C18 I 3.0 ISO</b>	3.0	M24, M27	M28-M60	1	17.8	
	<b>C18 I 3.5 ISO</b>	3.5	M30, M33		1	17.8	
C25	<b>C25 I 3.0 ISO</b>	3.0	M32, M33	M30-M80	2	25.0	H10, 11, 24, 25
	<b>C25 I 3.5 ISO</b>	3.5	M33		1	25.0	
	<b>C25 I 4.0 ISO</b>	4.0	M36, M39	M48-M80	1	25.0	
	<b>C25 I 4.5 ISO</b>	4.5	M42, M45		1	25.0	
	<b>C25 I 5.0 ISO</b>	5.0	M48, M52		1	25.0	
	<b>C25 I 5.5 ISO</b>	5.5	M56, M60		1	25.0	
	<b>C25 I 6.0 ISO</b>	6.0	M64, M68	M70-M80	1	25.0	

\* For complete toolholder description see pages B07-22 and 23

# CMT Vertical Milling

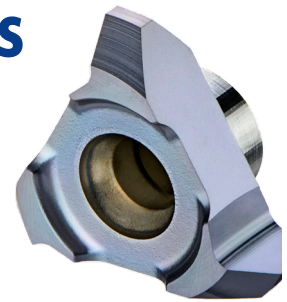
## Advantages

- Ground profile inserts for high precision and excellent performance.
- Working at high machining parameters, with high surface quality.
- Solid and accurate clamping method enables full repeatability.
- Same insert and holder for right-hand or left-hand threads.
- Toolholders include weldon shank and coolant bore.

## CMT Straight Flute Inserts

### Carbide Grade: MT7

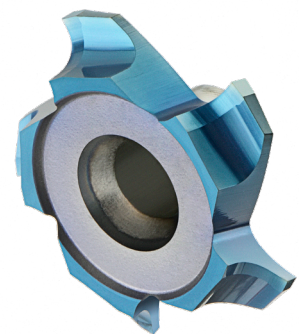
Inserts are available in MT7 Sub-Micron Grade with Titanium Aluminum Nitride multi-layer coating (ISO K10 - K20). This is a general purpose grade, covering a very wide range of materials.



## CMT Spiral Multi Flute Inserts

- Multi flute: 4-8 cutting edges
- Spiral flute for smooth cutting

The new cutters are designed for large range of materials including hardened steel up to 62 HRc.



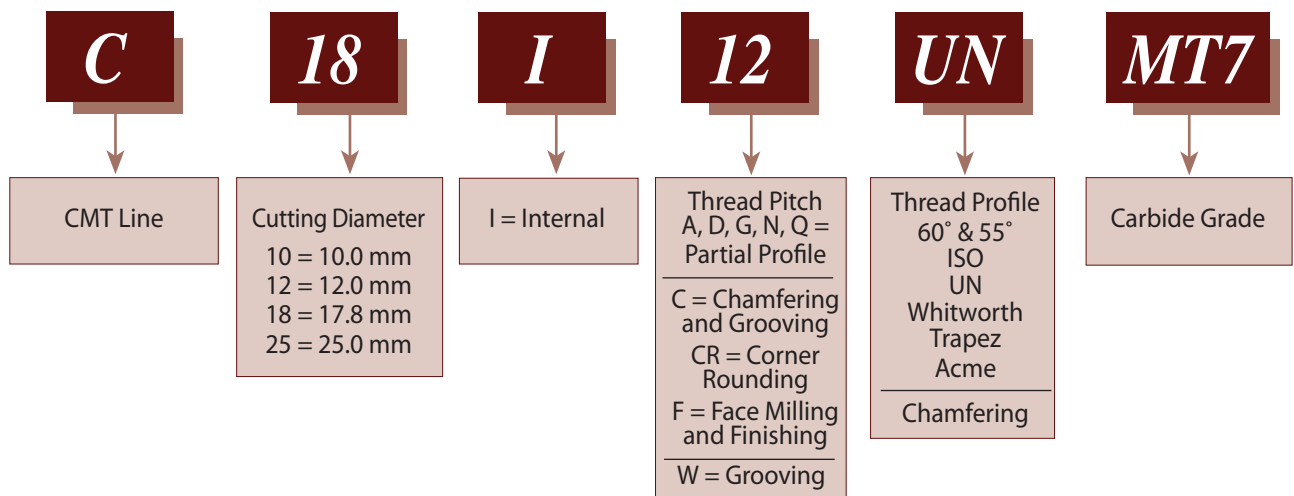
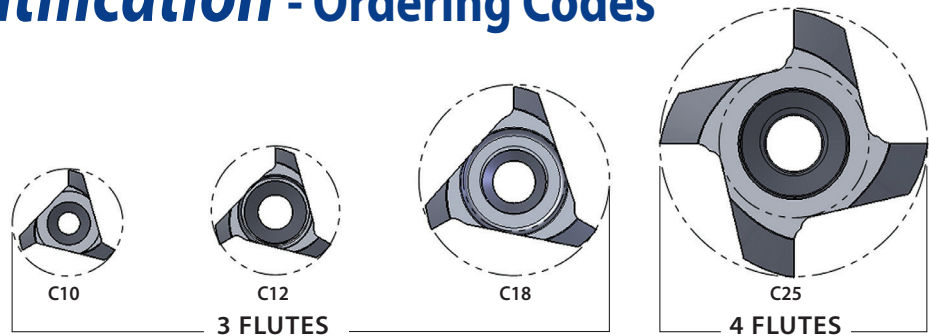
### Advantages

- Longer tool life
- High material removal and higher feeds results increased productivity
- Excellent surface finish
- Reduced cycle time
- Low cutting forces due to the spiral multi flutes

### Carbide Grade: MT8

Sub Micron grade with advanced PVD triple coating (ISO K10-K20). Extremely high heat resistant and smooth cutting operation, high performance, for all machining conditions.

## Product Identification - Ordering Codes



## CMT Spiral Multi Flute Inserts

